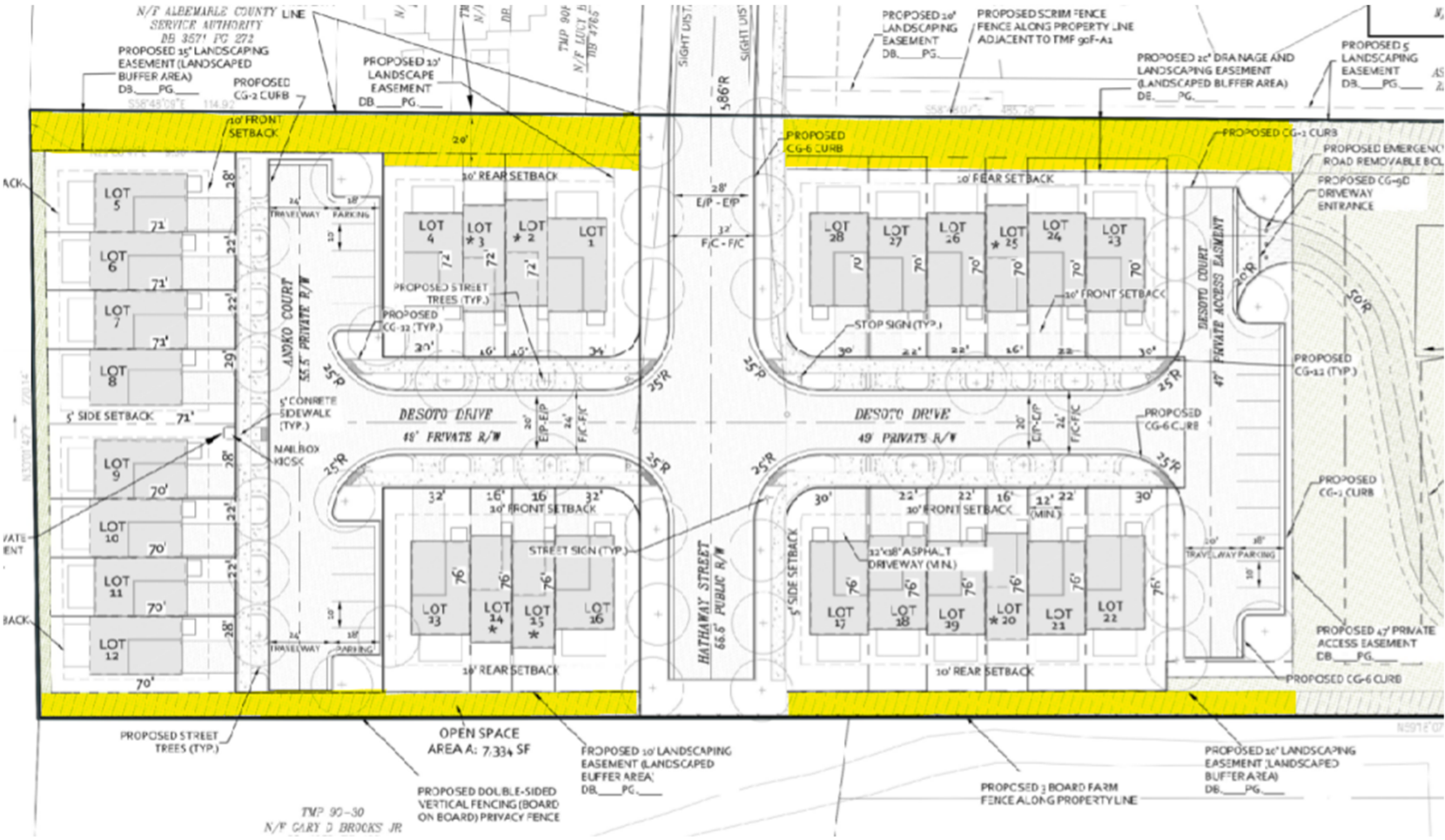


Attachment C: Intensified landscaping area for screening created by the Community Development Department on 10-13-20



The applicant shall provide landscape screening in accordance with §18.32.7.9.7 or landscaping as approved by the agent, in the open space/landscaping easement areas highlighted above. This intensified planting area does not negate the required landscaping area elsewhere on the application plan associated with ZMA2014-6 or required by the proffers.