

# Breezy Hill ZMA - Existing Conditions

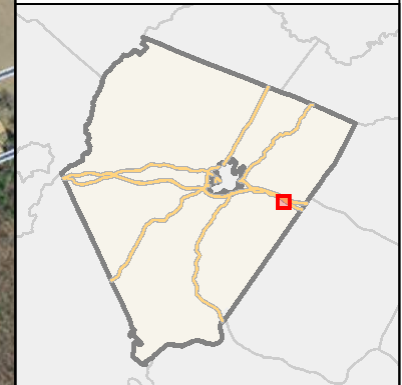


## Legend

(Note: Some items on map may not appear in legend)

### Parcel Info

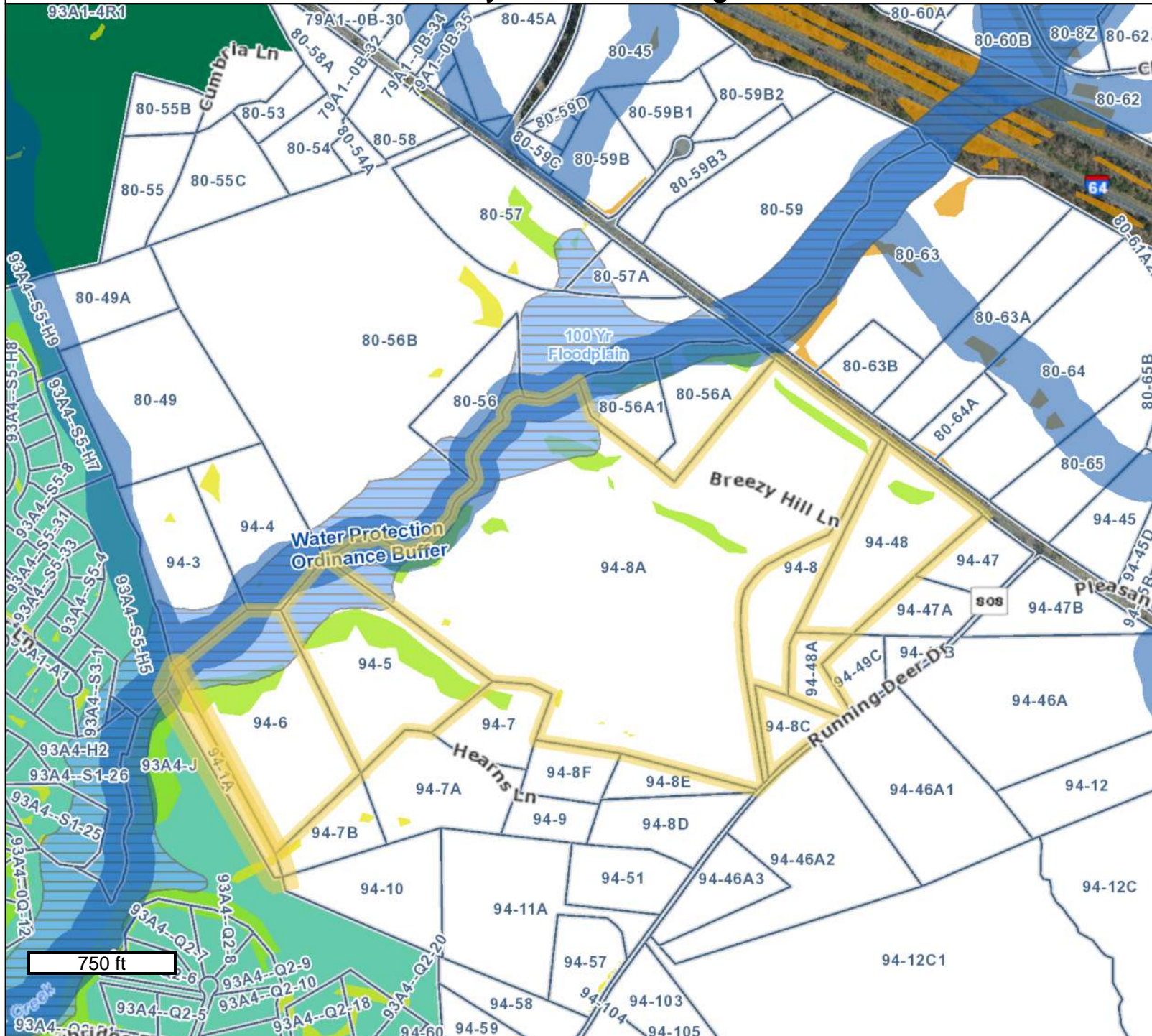
- Parcels



GIS-Web  
Geographic Data Services  
[www.albemarle.org/gis](http://www.albemarle.org/gis)  
(434) 296-5832



## Breezy Hill ZMA - Zoning with Critical Resources



### Legend

(Note: Some items on map may not appear in legend)

## Overlays

## Water Protection Ordinance Buffers

### Parcel Info

## Parcels

### Zoning Info

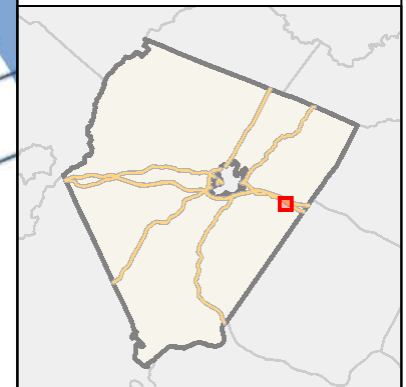
 Flood Hazard Overlay (100 Year Flo

## Steep Slopes Overla

Critical Slopes  
Steep Slopes - Managed  
Steep Slopes - Preserved

## Zoning Classifications

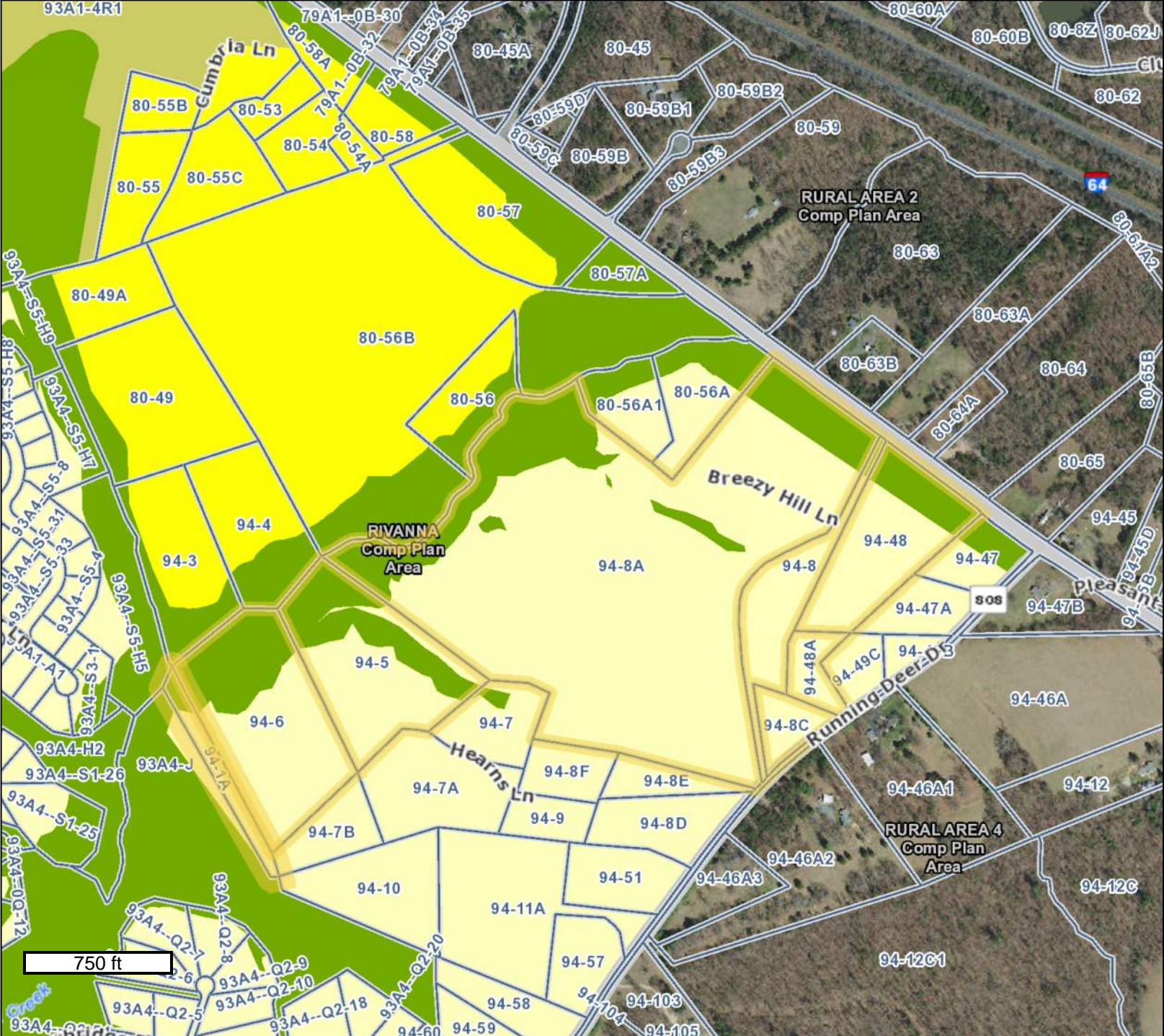
Rural Areas  
Village Residential  
R1 Residential  
R2 Residential  
R4 Residential  
R6 Residential  
R10 Residential  
R15 Residential  
Planned Unit Development  
Planned Residential Development  
Neighborhood Model District  
Monticello Historic District  
C1 Commercial  
Commercial Office  
Highway Commercial  
Planned Development Shopping Ctr.  
Planned Development Mixed Comm.  
Downtown Crozet District  
Light Industry  
Heavy Industry  
Planned Development Industrial Park  
Town of Scottsville



GIS-Web  
Geographic Data Services  
[www.albemarle.org/gis](http://www.albemarle.org/gis)  
(434) 296-5832



**Breezy Hill ZMA - Future Land Use Plan**



## Legend

(Note: Some items on map may not appear in legend)

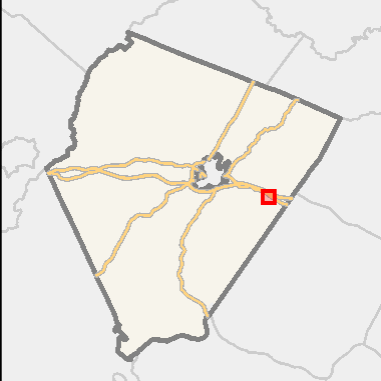
### Parcel Info

- ☐
- Parcels

### Comp Plan Land Use Info

- ## Comprehensive Plan Areas

- Village of Rivanna Master Plan Land  
Neighborhood Density Residential L  
Neighborhood Density Residential  
Town/Village Center  
Institutional  
Parks and Green Systems



GIS-Web  
Geographic Data Services  
[www.albemarle.org/gis](http://www.albemarle.org/gis)  
(434) 296-5832