



COVID-19 UPDATE



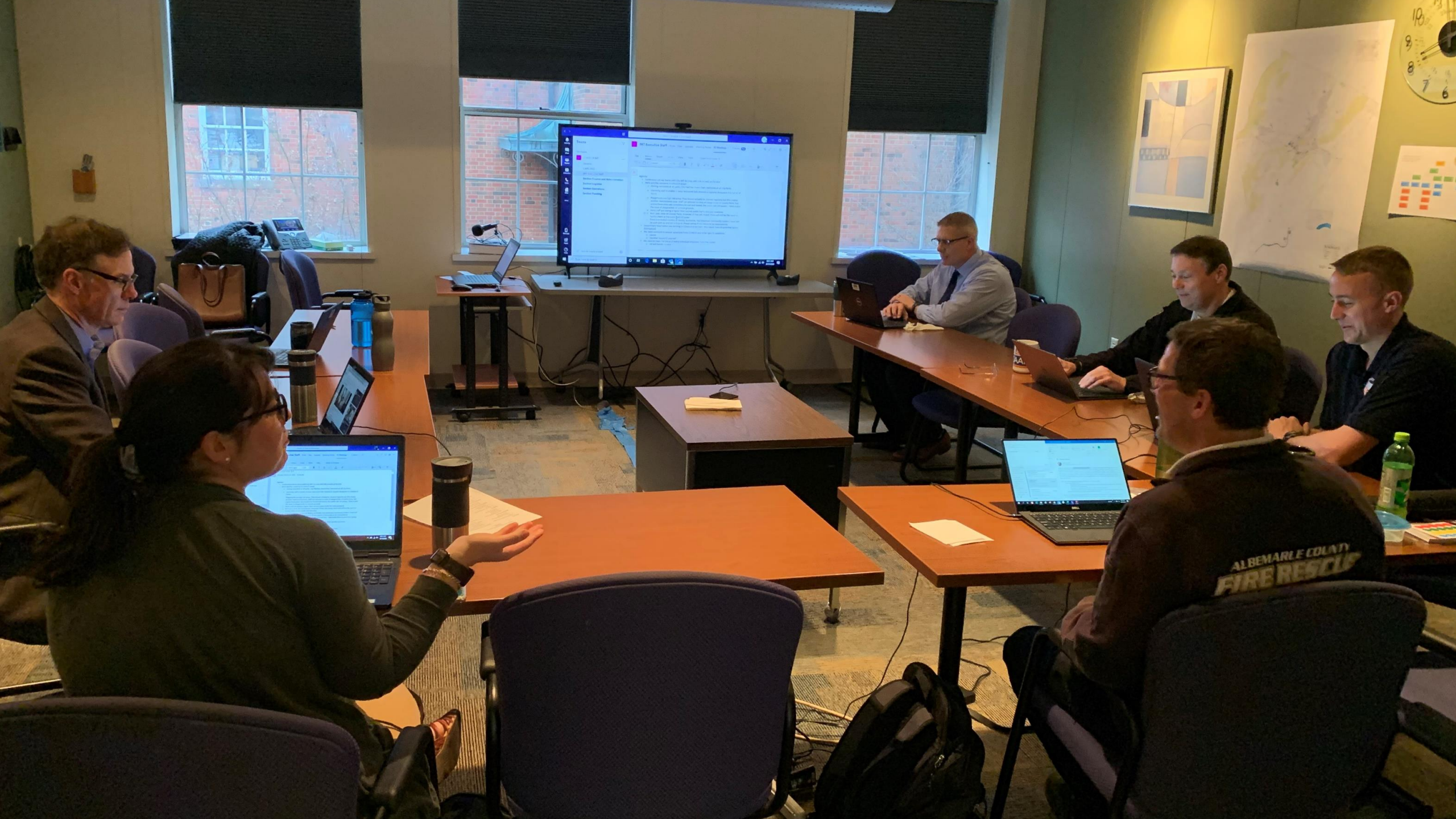
GOALS

- Maintain essential services for the public
- Reduce transmission among staff
- Protect people who are at higher-risk for adverse health complications



INCIDENT MANAGEMENT TEAM

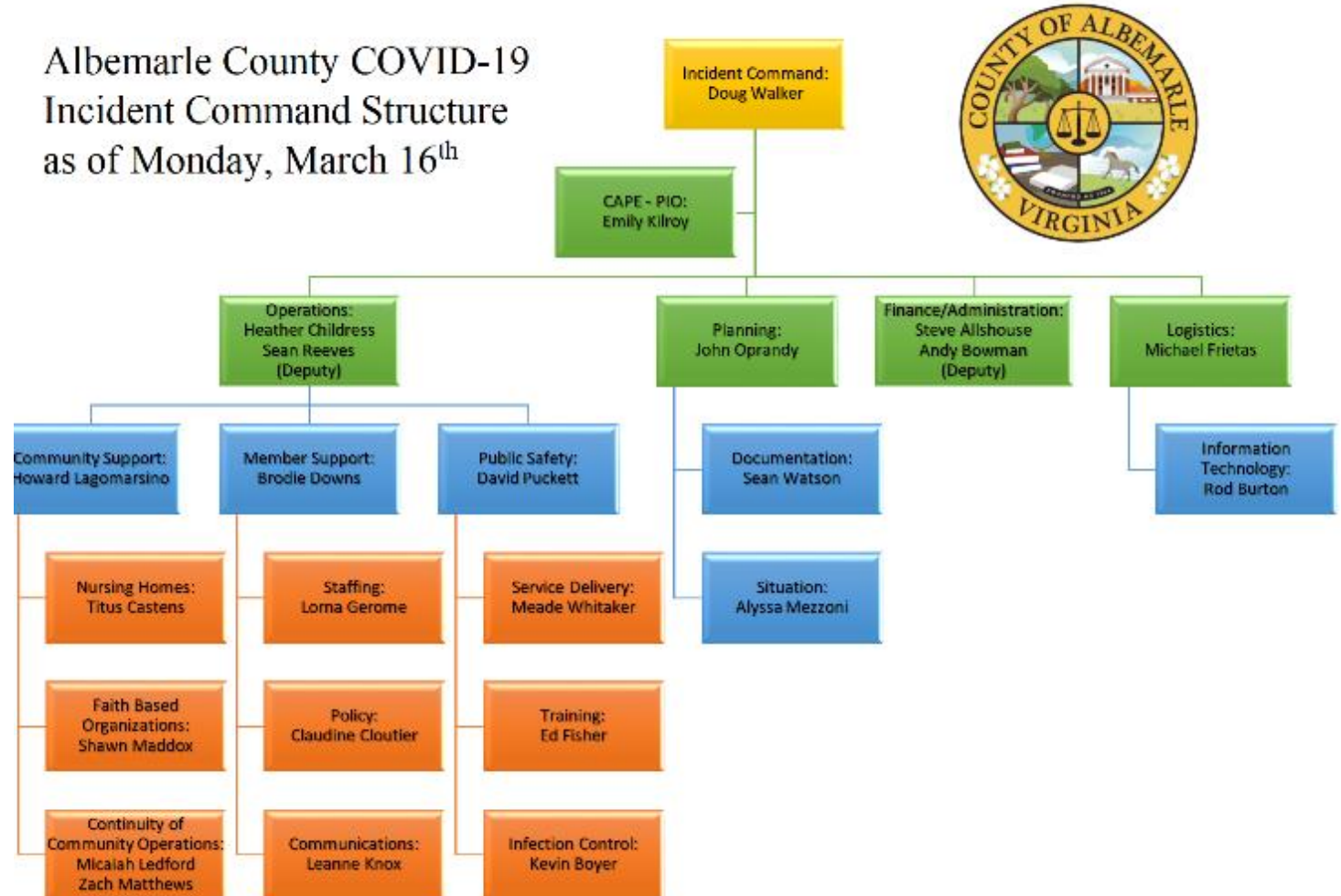




STRUCTURE & FOCUS AREAS

- Communications
- Operations
- Planning
- Finance/Administration
- Logistics

Albemarle County COVID-19 Incident Command Structure as of Monday, March 16th



PLANNING



ONGOING
SITUATIONAL STATUS



FORECASTING
FUTURE NEEDS AND
ACTIONS



TRACKING REGIONAL
COVID-TYPE
EMERGENCY CALLS



INFORMED BY
INTELLIGENCE AND
CDC GUIDANCE



LEARNING FROM
CASE STUDIES OF
OTHER COMMUNITIES



CONTINUITY OF OPERATIONS



IN OUR BUILDING

- Limited visitor access to lobbies to extent possible
- Enacting social distancing measures
 - Seats in Lane
 - Customer service tables by visitors entrance
- Encouraging web and phone services
- Signage for hand washing/sanitization



FOR OUR STAFF



Directed employees that telework to do so for the foreseeable future



Directed high-risk employees who self-identified using a CDC list of factors to telework or place on leave



Developing employee roster for essential services to manage continuity of operations



BeWell employee resources for support



Actively monitoring state and federal-level actions



COMMUNITY SUPPORT



FOR THE COMMUNITY

- Public Schools have created lunch distribution at schools throughout the County
- City/County DSS Departments are coordinating Human Services activities
- Keeping parks and trails open for now



PUBLIC SAFETY & HUMAN SERVICES



Established screening questions
through 911 call takers



Implementing common protective
measure to ensure well-being of
public safety personnel



Ensuring elderly care facilities have
mitigation measures in place



REGIONAL COLLABORATION



WORKING TOGETHER

- Regional Emergency Operations center open
 - Public Health
 - Human Services
 - Donation and Volunteer Services
- Joint Information Center open
- Daily City/County coordination call

