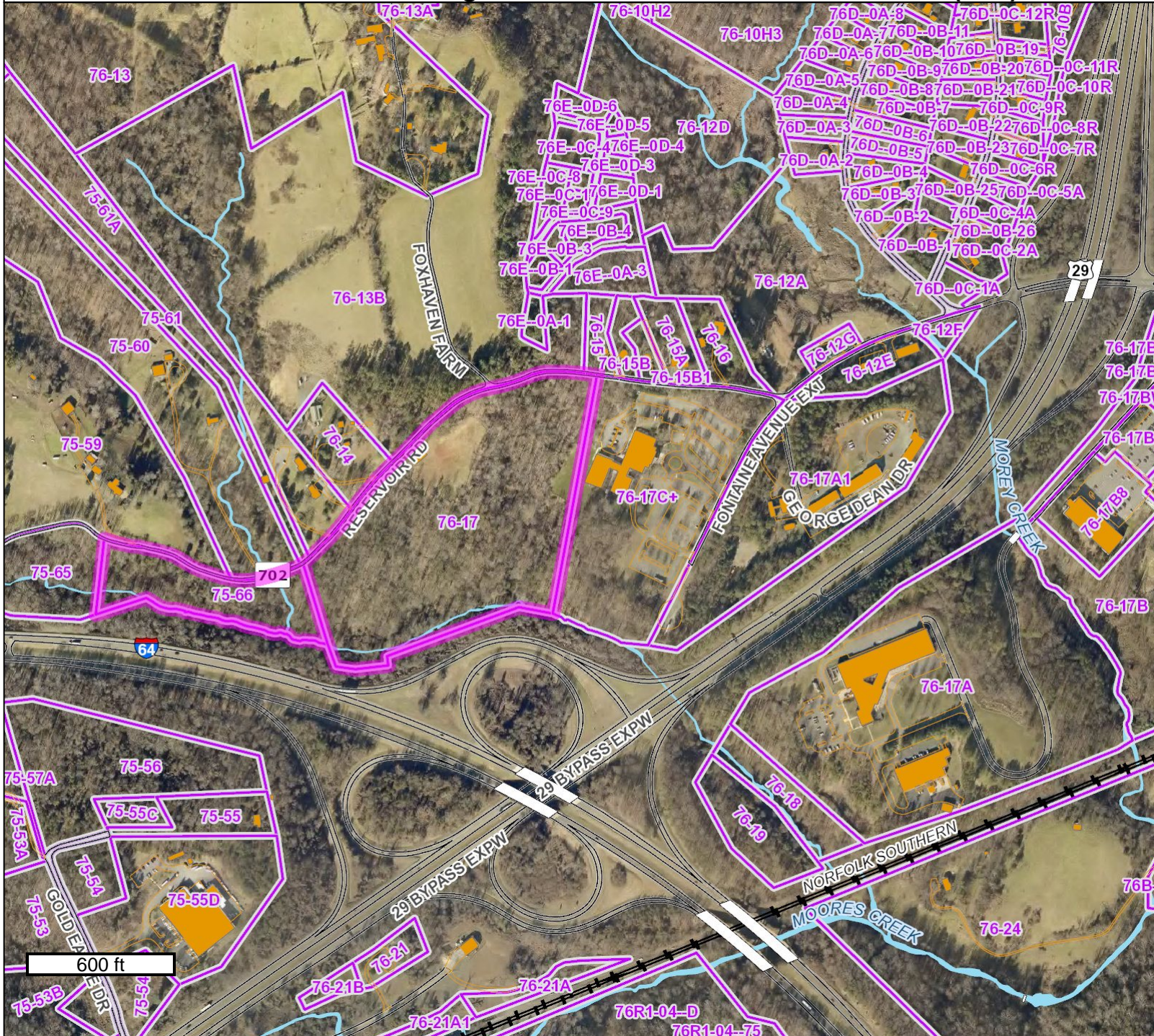


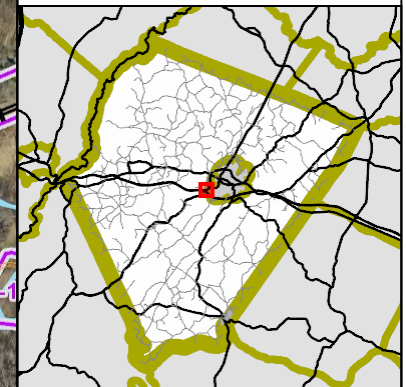
Regents School SP201800011 - Location (Site)



Legend

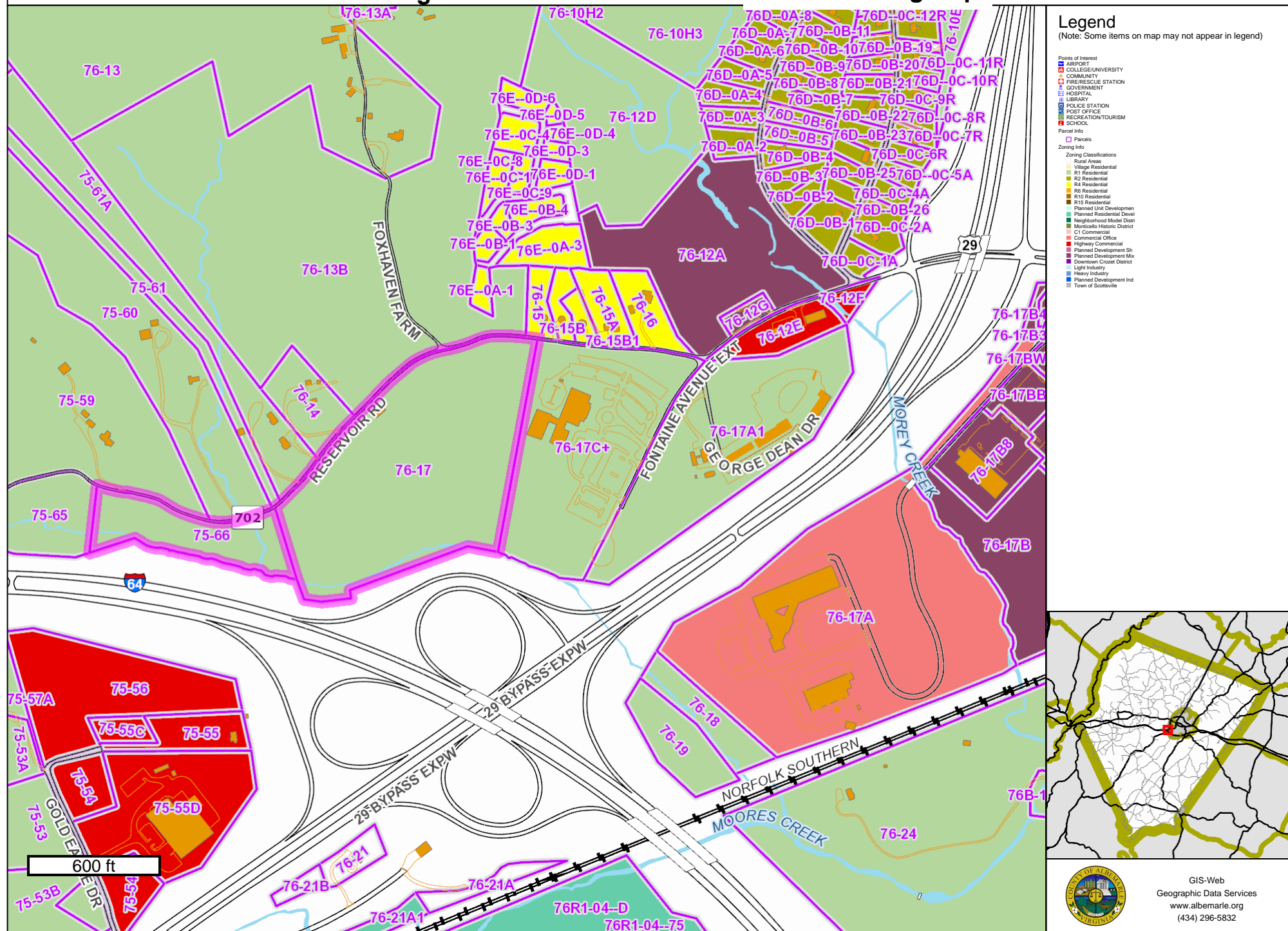
(Note: Some items on map may not appear in legend)

- Points of Interest
 - AIRPORT
 - COLLEGE/UNIVERSITY
 - COMMUNITY
 - FIRE/RESCUE STATION
 - GOVERNMENT
 - HOSPITAL
 - LIBRARY
 - POLICE STATION
 - POST OFFICE
 - RECREATION/TOURISM
 - SCHOOL
- Parcel Info
 - Parcels

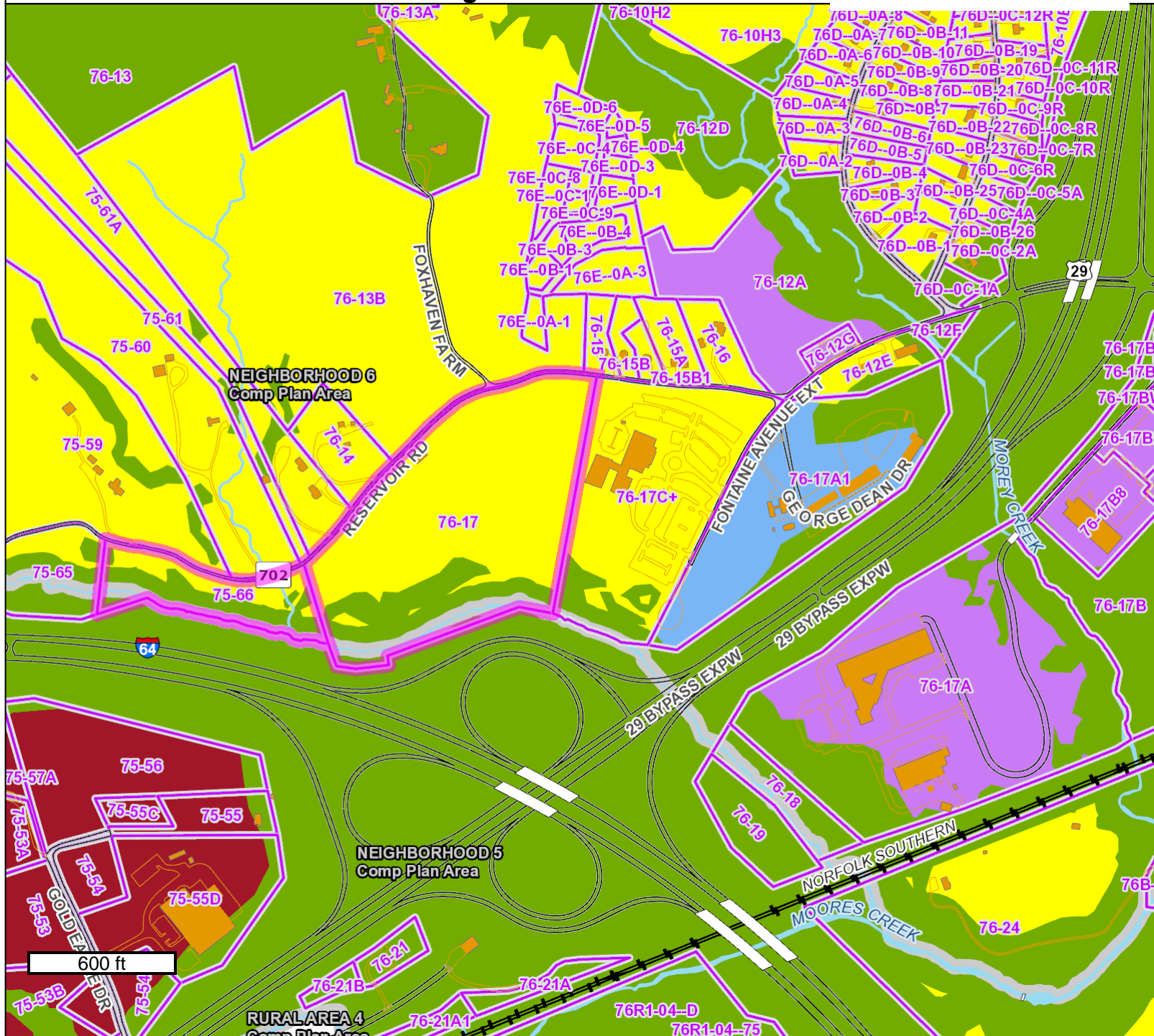


GIS-Web
Geographic Data Services
www.albemarle.org
(434) 296-5832

Regents School SP201800011 - Current Zoning Map



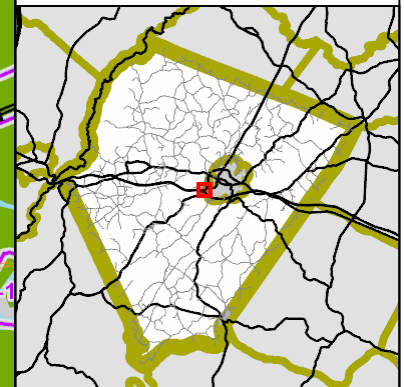
Regents School SP201800011 - Future Land Use Plan



Legend

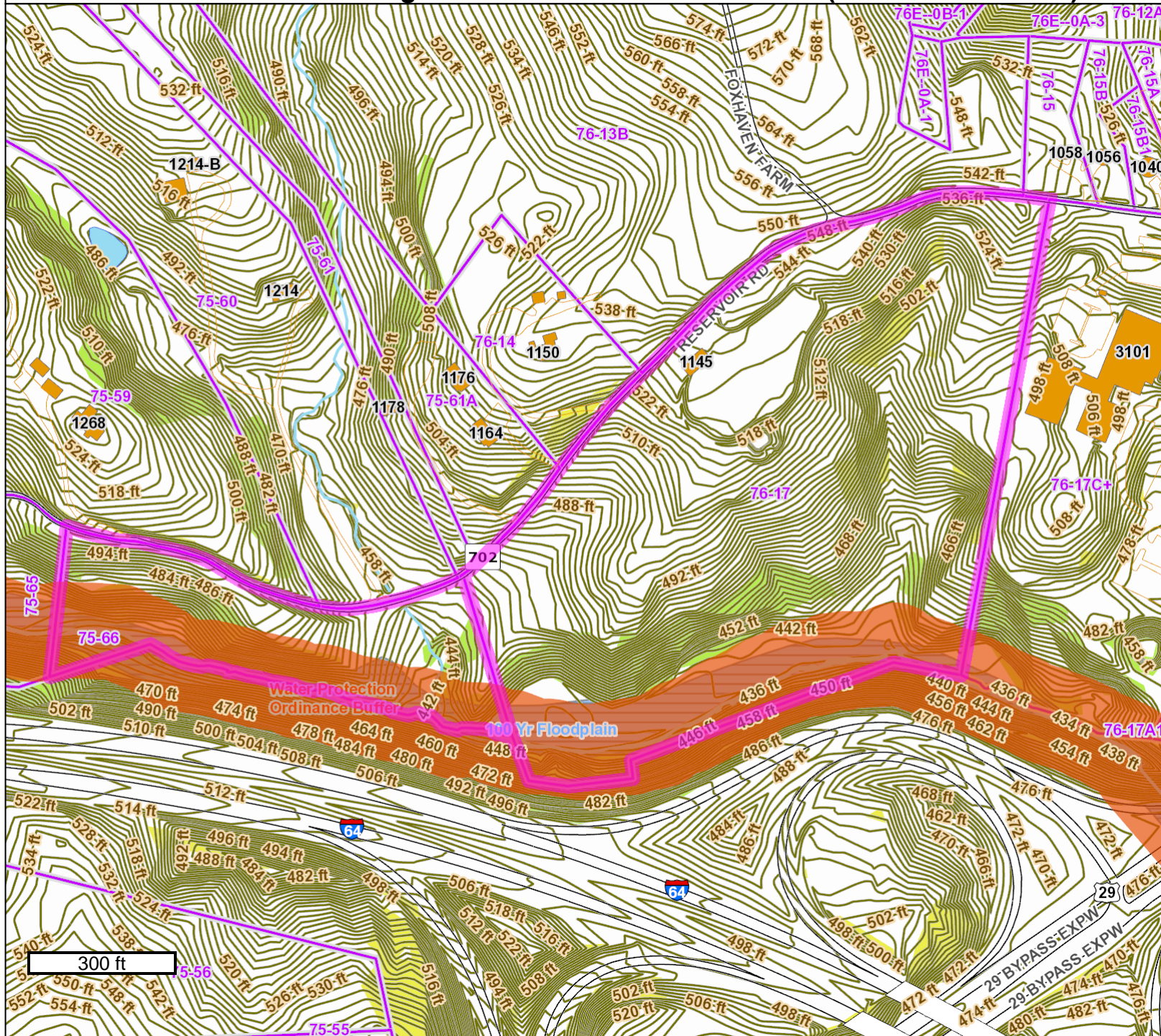
(Note: Some items on map may not appear in legend)

- Points of Interest**
- AIRPORT
 - COLLEGE/UNIVERSITY
 - COMMUNITY
 - FIRE/RESCUE STATION
 - GOVERNMENT
 - HOSPITAL
 - LIBRARY
 - POLICE STATION
 - POST OFFICE
 - RECREATION/TOURISM
 - SCHOOL
- Parcel Info**
- Parcels
- Comp Plan Land Use Info**
- Comprehensive Plan Area
 - Southern and Western Urban Density Residential
 - Neighborhood Density Residential
 - Neighborhood Mixed Use
 - Urban Density Residential
 - Community Mixed Use
 - Regional Mixed Use
 - Office / R & D / Flex / Light Industrial
 - Institutional
 - Parks and Green Systems



GIS-Web
Geographic Data Services
www.albemarle.org
(434) 296-5832

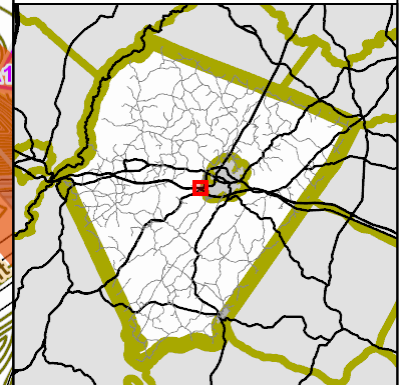
Regents School SP201800011 - Site (Critical Resources)



Legend

(Note: Some items on map may not appear in legend)

- Points of Interest
 - AIRPORT
 - COLLEGE/UNIVERSITY
 - COMMUNITY
 - FIRE/RESCUE STATION
 - GOVERNMENT
 - HOSPITAL
 - LIBRARY
 - POLICE STATION
 - POST OFFICE
 - RECREATION/TOURISM
 - SCHOOL
- Overlays
 - Water Protection Ordinance
- Parcel Info
 - Parcels
- Elevation
 - Y2013 Elevation Contours
 - Y2013 Elevation Contours
- Zoning Info
 - Flood Hazard Overlay (10)
 - Steep Slopes Overlay
 - Critical Slopes
 - Steep Slopes - Managed
 - Steep Slopes - Preserved



GIS-Web
Geographic Data Services
www.albemarle.org
(434) 296-5832