

999 RIO ROAD

TMP 61-154RB

Submitted 19 February 2019

Revised 29 APRIL 2019

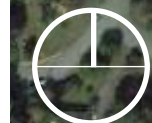
Context Map

Sheet 1 of 8

project number: 19.006

INDEX OF SHEETS

- 1 - Cover & Context Map
- 2 - Existing Conditions
- 3 - Block Network
- 4 - Buildable Area +
Conceptual Stormwater & Grading Plan
- 5 - Proposed Circulation
- 6 - Amenity & Landscape Diagram
- 7 - Conceptual Street Section
-Rio Road
- 8 - Conceptual Street Section
-Belvedere Boulevard

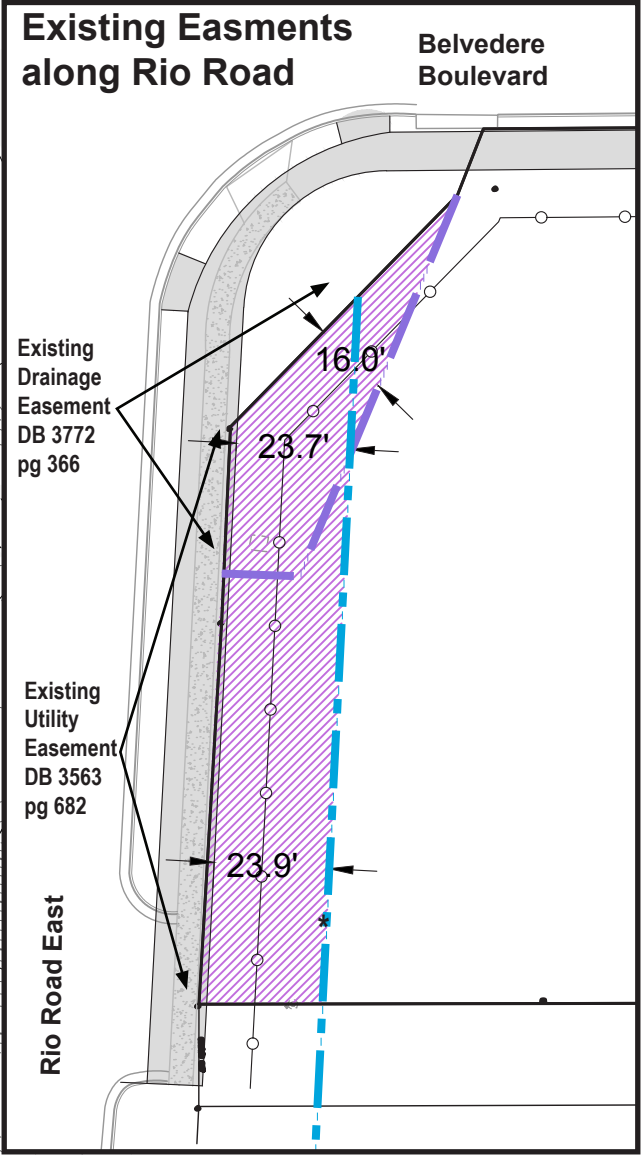
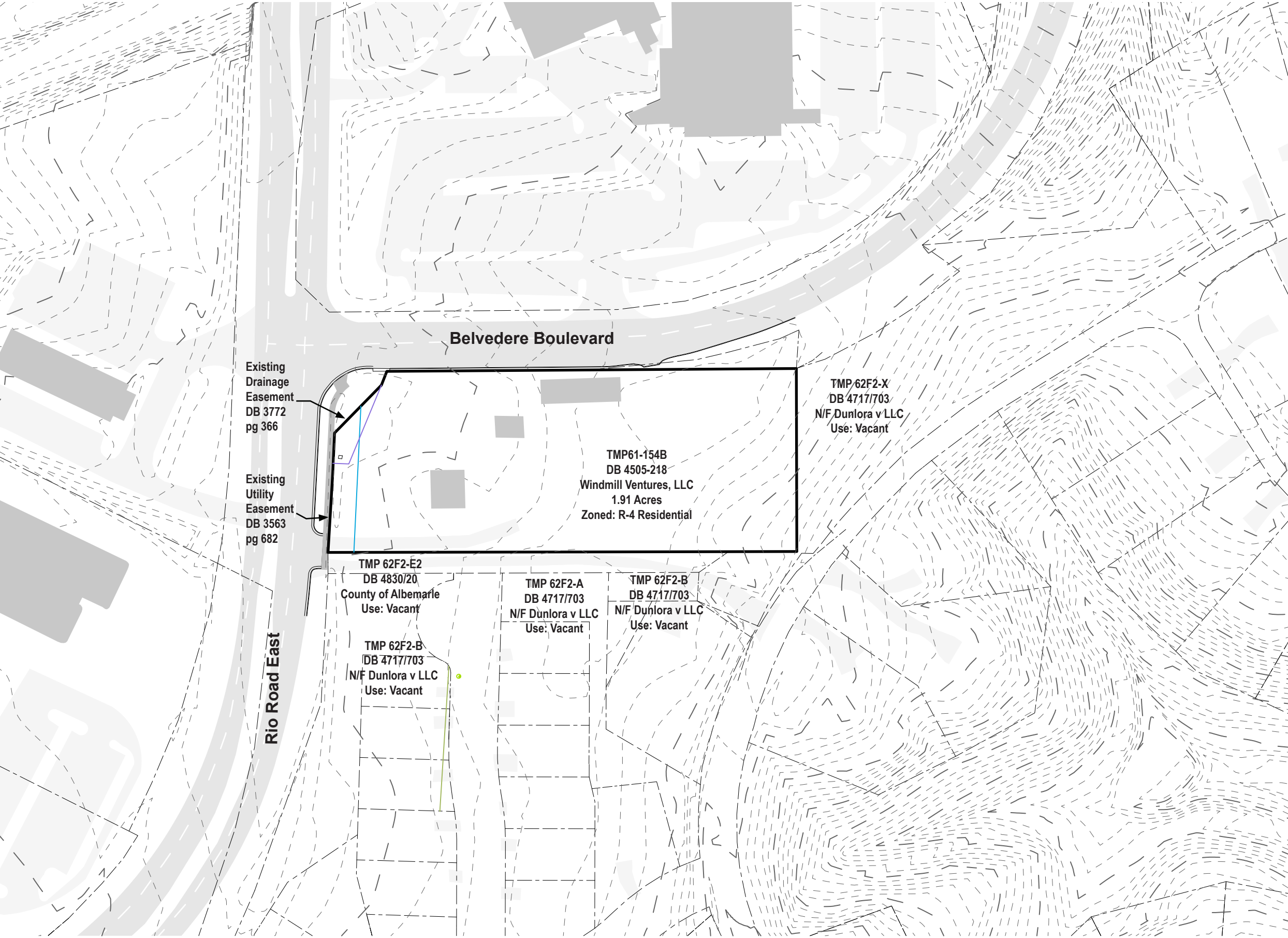


NTS

Image provided by Google Maps

SHIMP ENGINEERING, P.C.

999 RIO ROAD
EXISTING CONDITIONS
Sheet 2 of 8

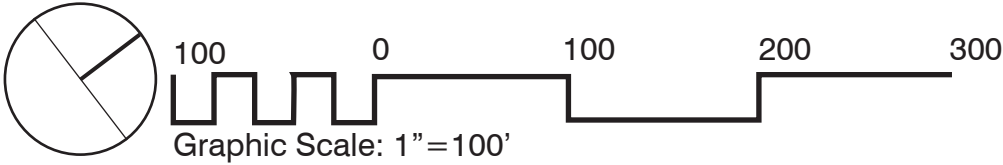


Graphic Scale: 1" = 40'
*Dimensions measured from back of proposed multi-use path

TMP 61-154B

Submitted 19 February 2019
REVISED 29 APRIL 2019

project: 19.006



999 RIO ROAD BLOCK NETWORK

Sheet 3 of 8

Belvedere Boulevard

Rio Road East

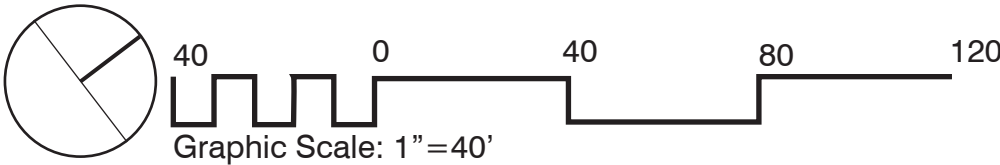
BLOCK 1
Mixed Use
.87 ac

BLOCK 2
Residential
1.04 ac

TMP 61-154B

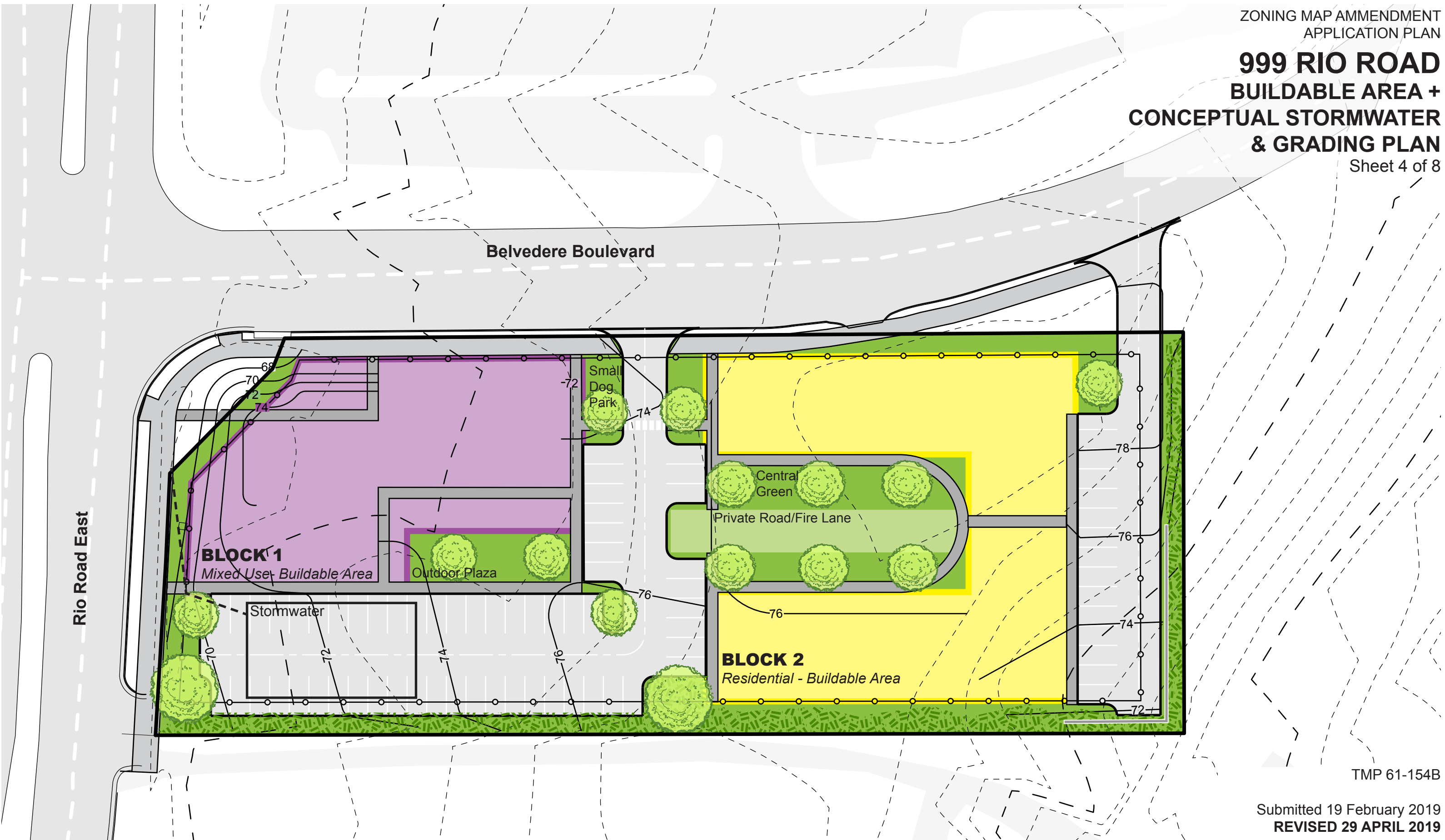
Submitted 19 February 2019
REVISED 29 APRIL 2019

project: 19.006



999 RIO ROAD BUILDABLE AREA + CONCEPTUAL STORMWATER & GRADING PLAN

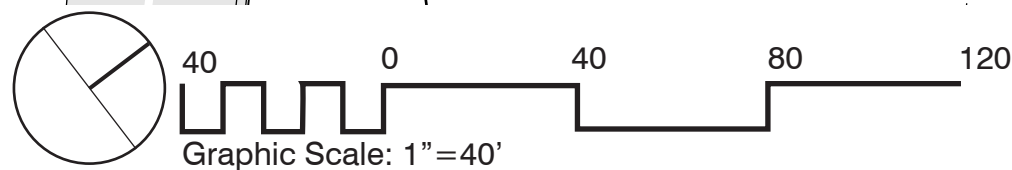
Sheet 4 of 8



TMP 61-154B

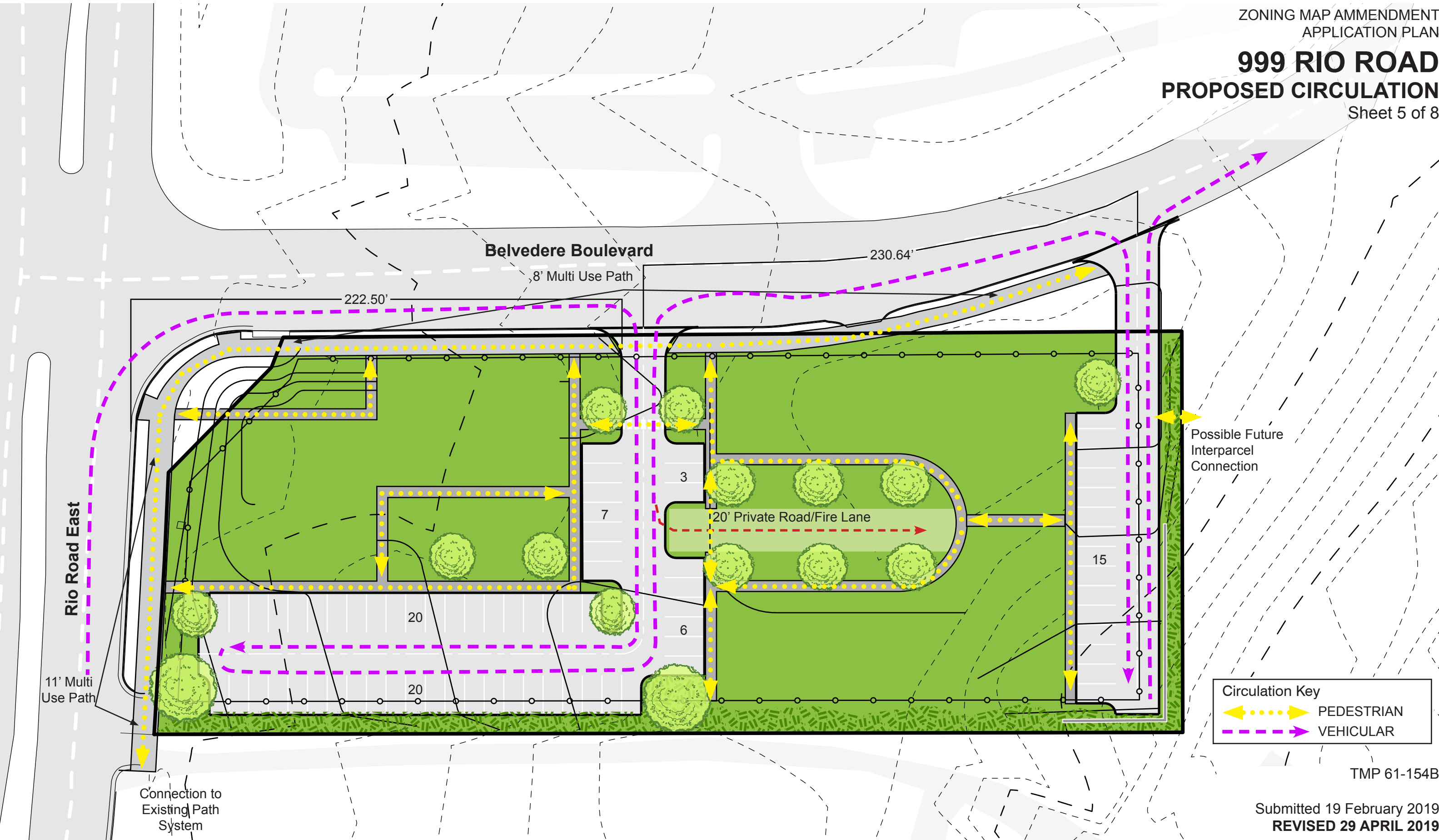
Submitted 19 February 2019
REVISED 29 APRIL 2019

project: 19.006



SHIMP ENGINEERING, P.C.

999 RIO ROAD
PROPOSED CIRCULATION
Sheet 5 of 8



TMP 61-154B

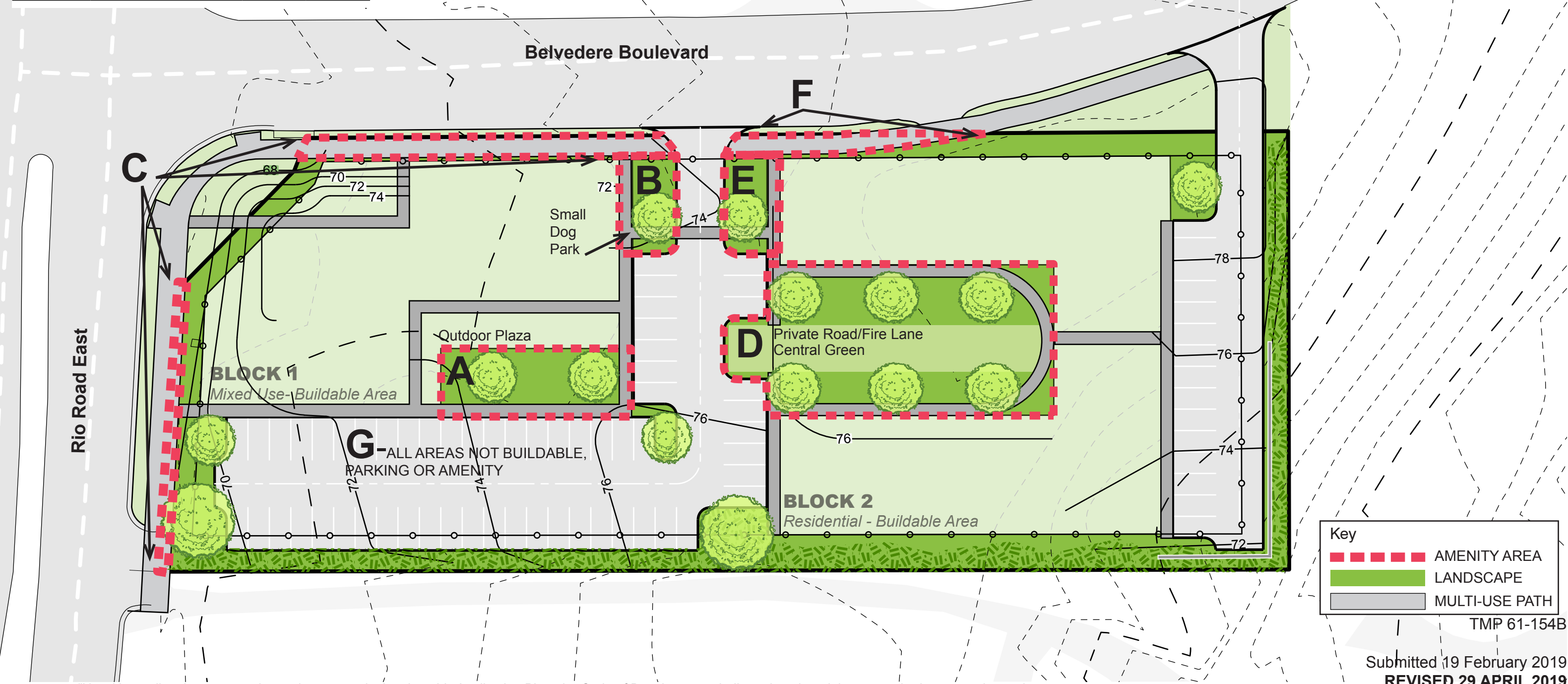
Submitted 19 February 2019
REVISED 29 APRIL 2019

project: 19.006

999 RIO ROAD
AMENITY & LANDSCAPE
DIAGRAM

Sheet 6 of 8

Amenity	Description	SF	
A	B1 - Courtyard	2271.01	
B	B1 - Dog Park	1126.78	
C	B1 - Multiuse Path	1393.59	
D	B2 - Courtyard	8004.01	
E	B2 - Dog Park	969.31	
F	B2 - Multiuse Path	636.84	
G	Site - Landscape	9844.84	
		24246.38	29%



"Notwithstanding the green and amenity spaces depicted on this Application Plan, the Code of Development shall regulate the minimum required green and amenity spaces. Therefore, provided such requirements are satisfied, non-substantive changes to the depicted design are allowed."

Key	
■■■■■	AMENITY AREA
■■■■■	LANDSCAPE
■■■■■	MULTI-USE PATH

TMP 61-154B

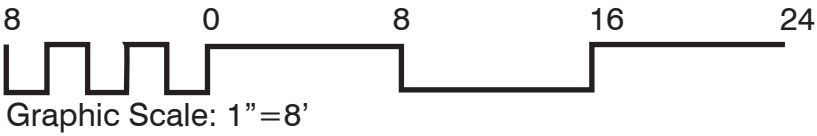
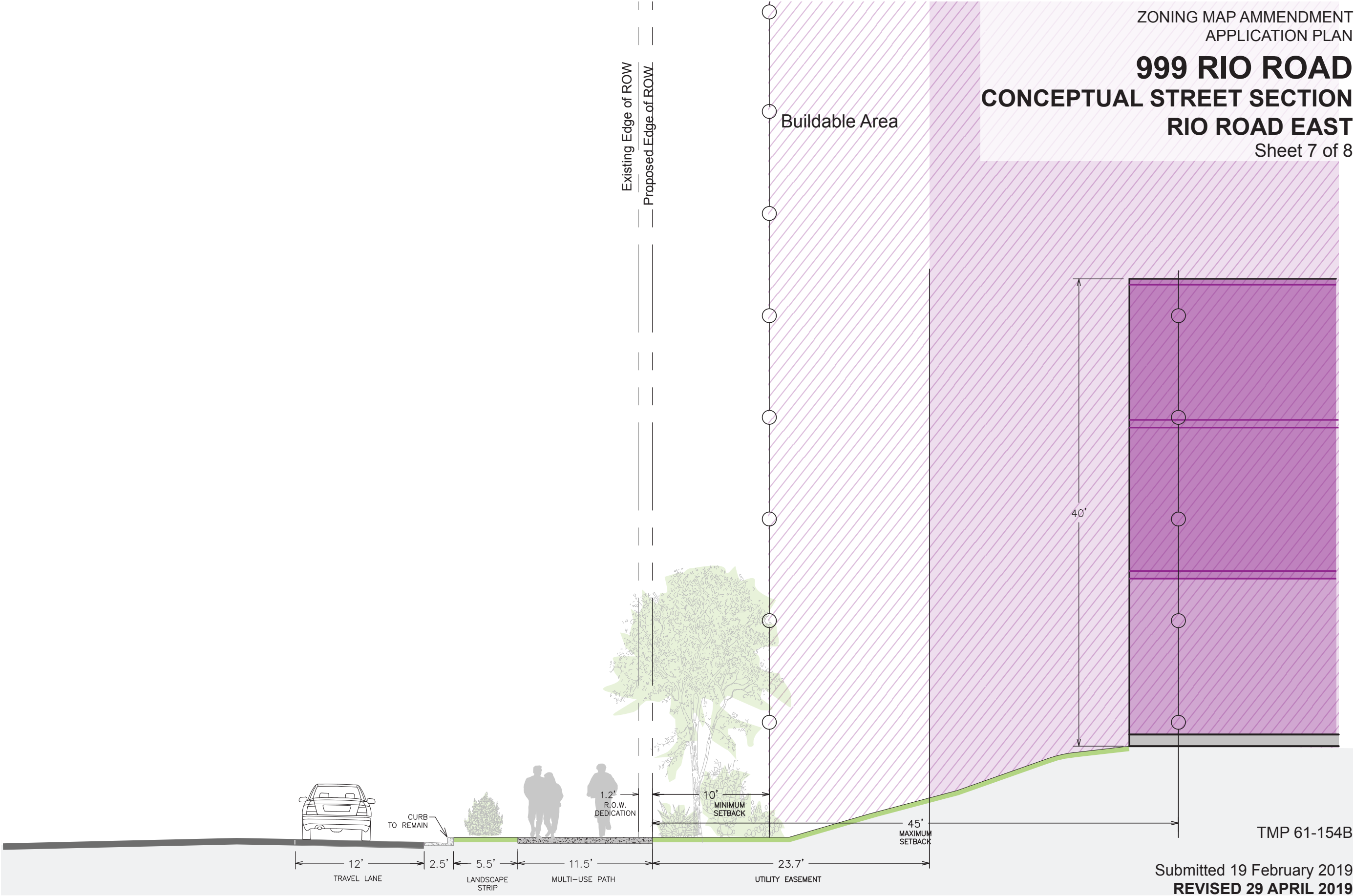
Submitted 19 February 2019
REVISED 29 APRIL 2019

project: 19.006

BLOCK 1
Mixed Use

Rio Road East
Right-Of-Way

999 RIO ROAD
CONCEPTUAL STREET SECTION
RIO ROAD EAST
Sheet 7 of 8



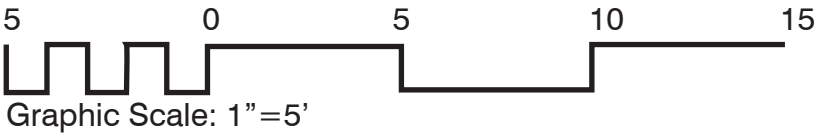
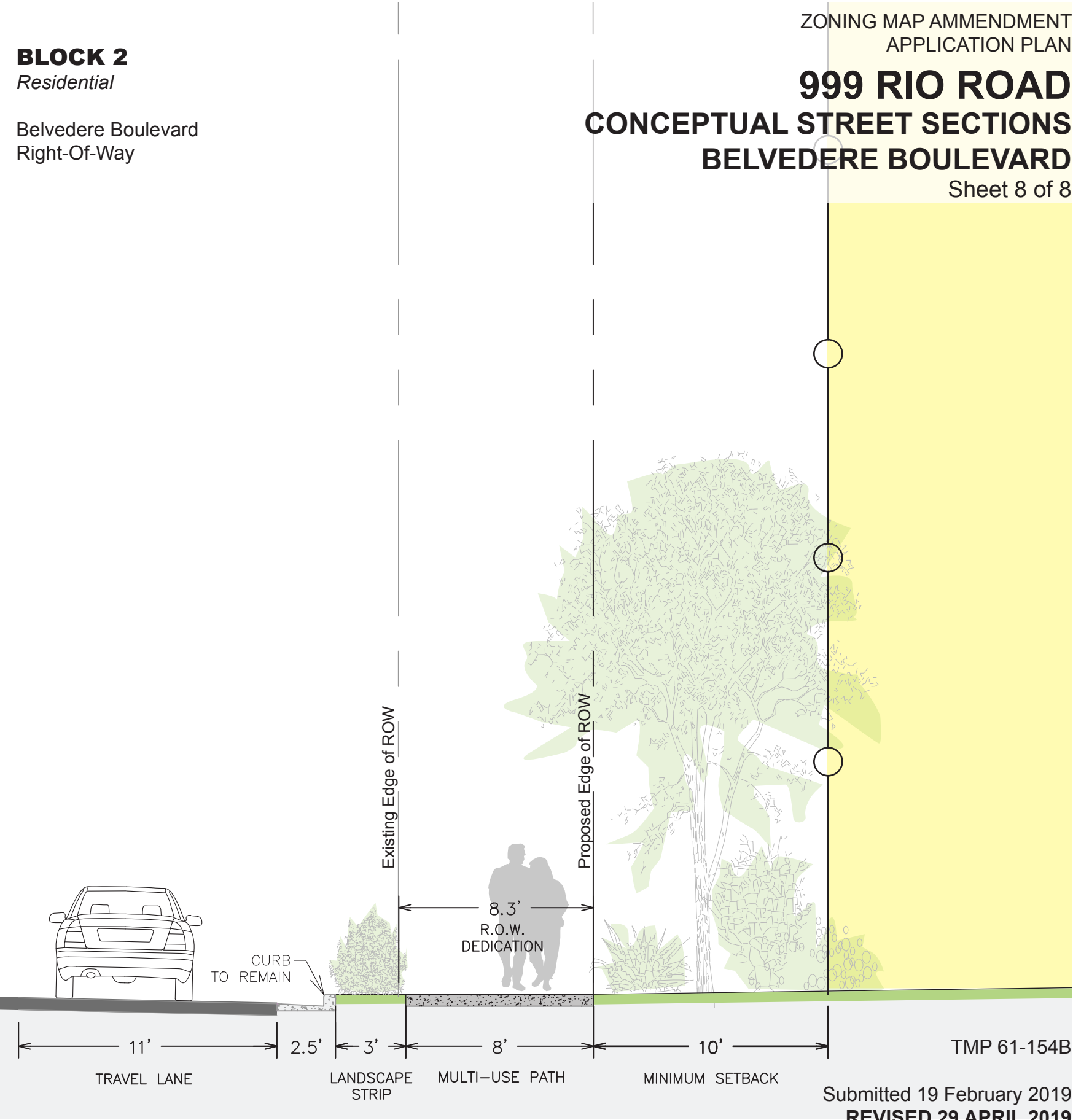
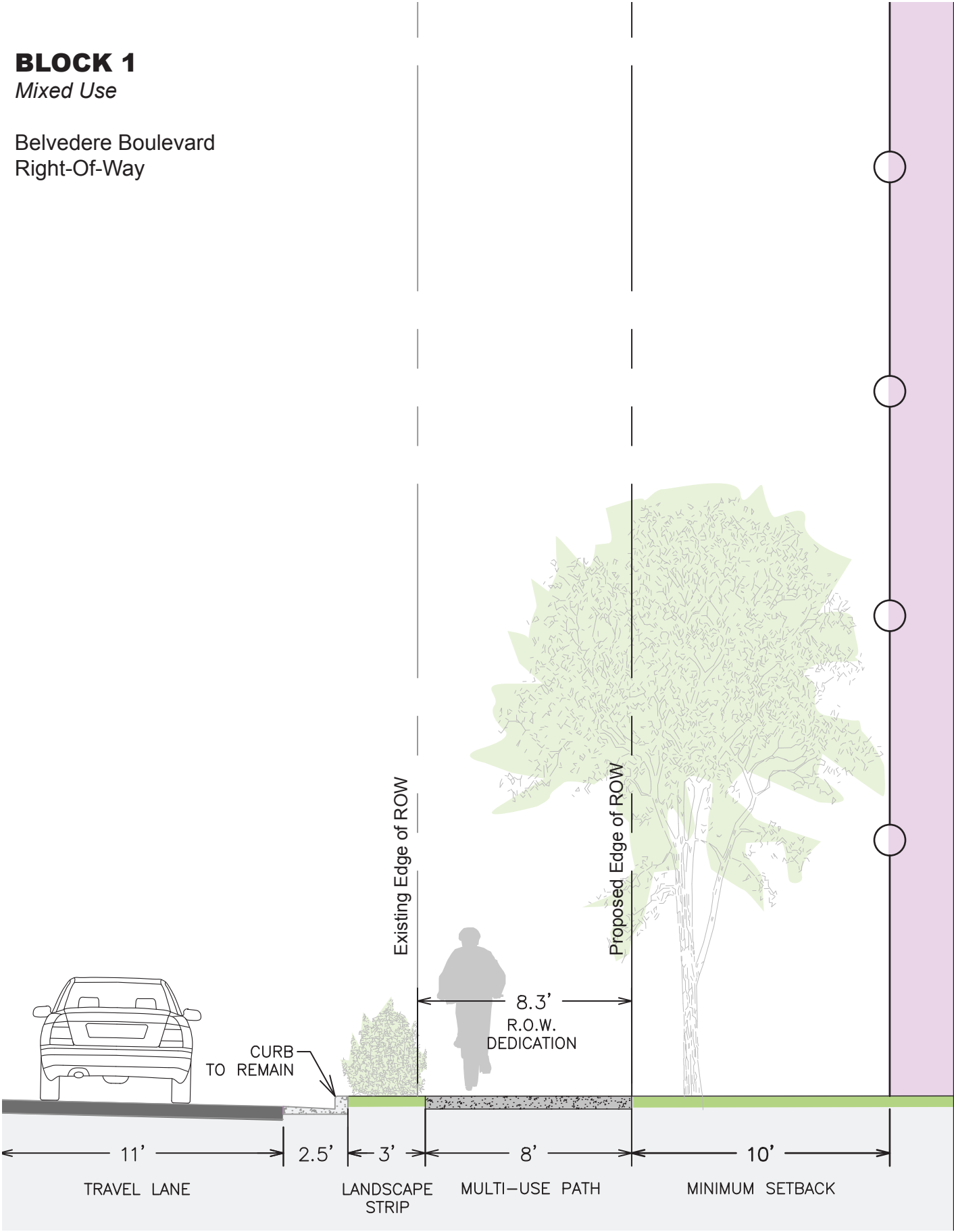
BLOCK 1
Mixed Use

Belvedere Boulevard
Right-Of-Way

BLOCK 2
Residential

Belvedere Boulevard
Right-Of-Way

999 RIO ROAD
CONCEPTUAL STREET SECTIONS
BELVEDERE BOULEVARD
Sheet 8 of 8



TMP 61-154B

Submitted 19 February 2019
REVISED 29 APRIL 2019

project: 19.006