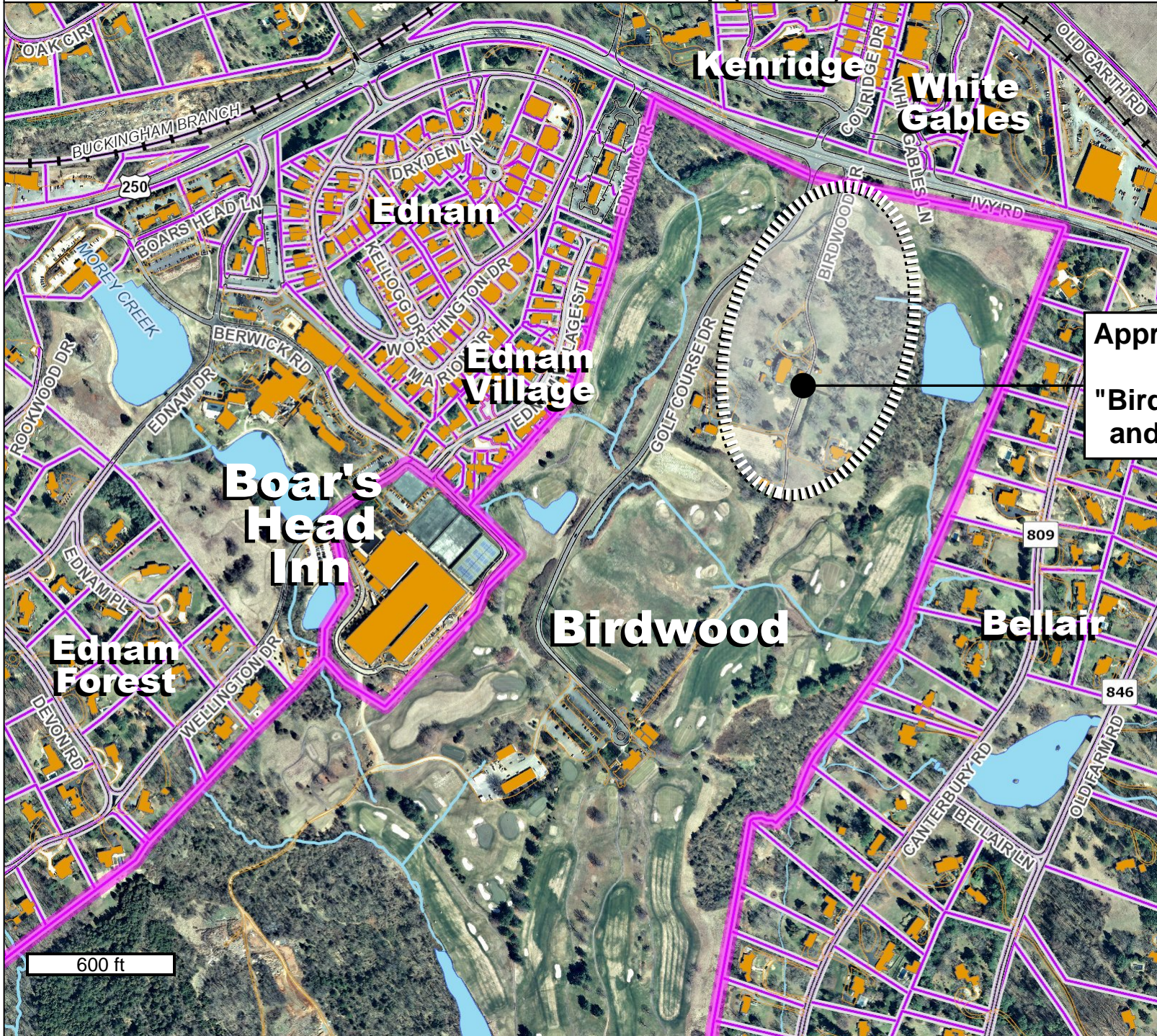


Basemap (1"=600')



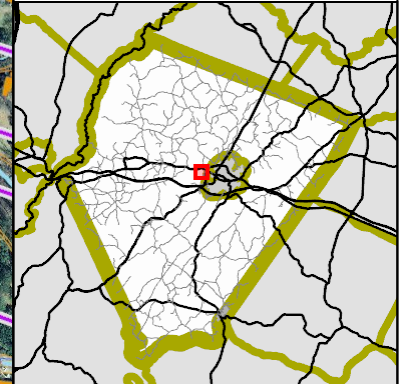
Legend

(Note: Some items on map may not appear in legend)

- Points of Interest
 - AIRPORT
 - COLLEGE/UNIVERSITY
 - COMMUNITY
 - FIRE/RESCUE STATION
 - GOVERNMENT
 - HOSPITAL
 - LIBRARY
 - POLICE STATION
 - POST OFFICE
 - RECREATION/TOURISM
 - SCHOOL
- Parcel Info
 - Current Parcels
 - Parcels

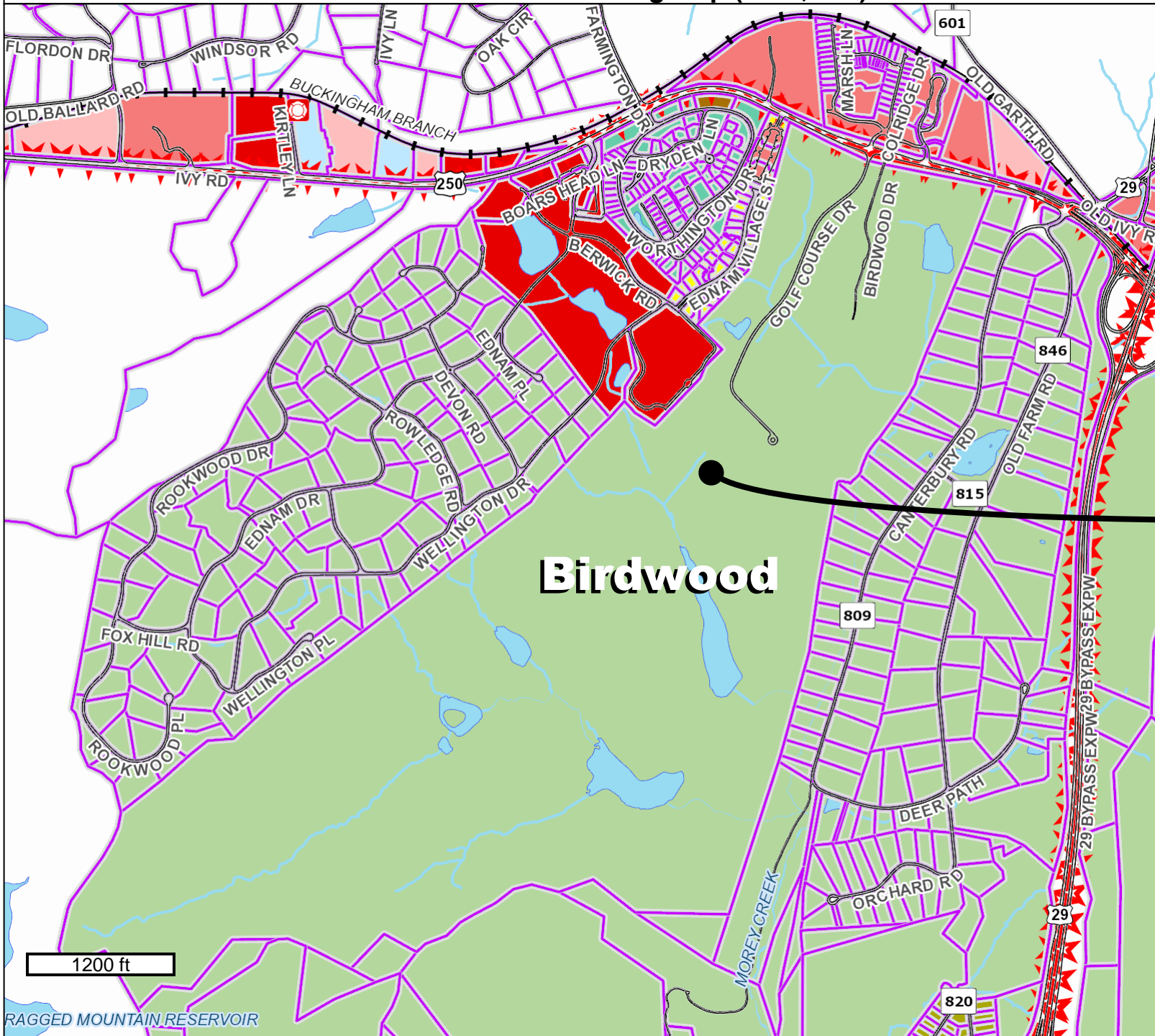
Approximate Location:

"Birdwood Mansion
and Grounds"



GIS-Web
Geographic Data Services
www.albemarle.org
(434) 296-5832

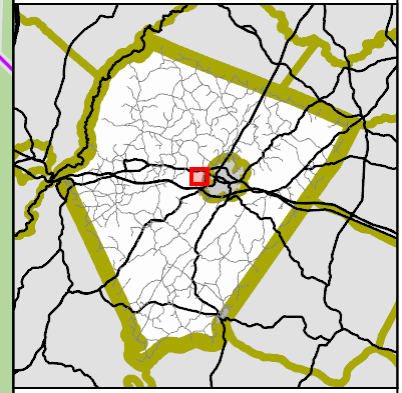
Zoning Map (1"=1,200')



Legend (Note: Some items on map may not appear in legend)

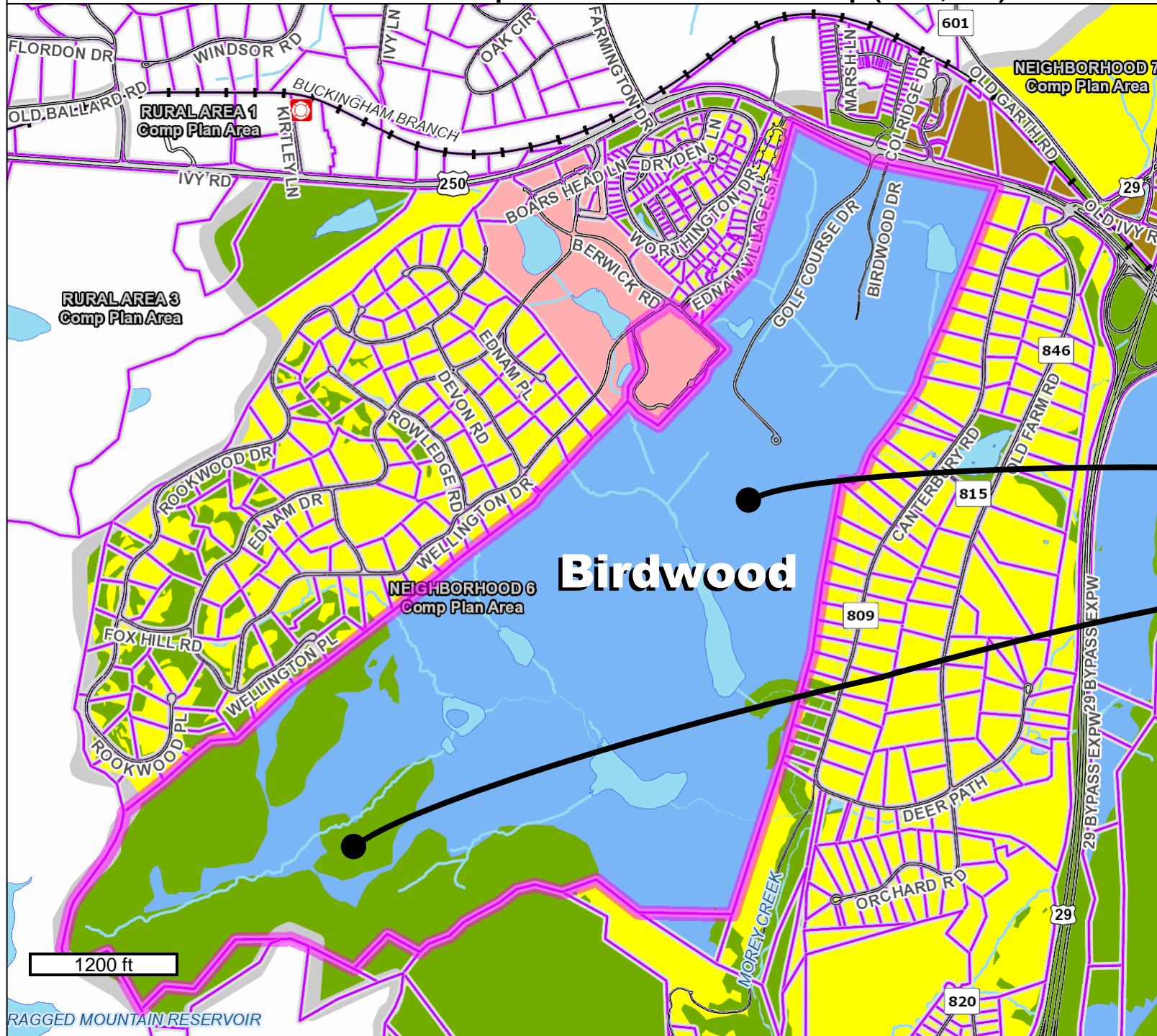
- Points of Interest
 - AIRPORT
 - COLLEGE/UNIVERSITY
 - COMMUNITY
 - FIRE/RESCUE STATION
 - GOVERNMENT
 - HOSPITAL
 - LIBRARY
 - POLICE STATION
 - POST OFFICE
 - RECREATION/TOURISM
 - SCHOOL
- Parcel Info
 - Current Parcels
 - Parcels
- Zoning Info
 - Zoning Entrance Corridors
 - Zoning Classifications
 - Rural Areas
 - Village Residential
 - R1 Residential
 - R2 Residential
 - R4 Residential
 - R6 Residential
 - R10 Residential
 - R15 Residential
 - Planned Unit Development
 - Planned Residential Devel
 - Neighborhood Model Devel
 - Monticello Historic District
 - C1 Commercial
 - Commercial Office
 - Highway Commercial
 - Planned Development Sh
 - Planned Development Mix
 - Downtown Growth District
 - Light Industry
 - Heavy Industry
 - Planned Development Ind
 - Town of Scottsville

**R1
Residential**



GIS-Web
Geographic Data Services
www.albemarle.org
(434) 296-5832

Comp Plan: Future Land Use Map (1"=1,200')



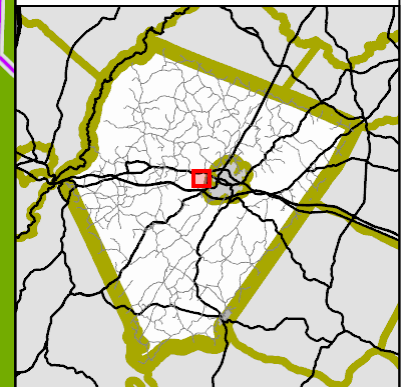
Legend

(Note: Some items on map may not appear in legend)

- Points of Interest
 - AIRPORT
 - COLLEGE/UNIVERSITY
 - COMMUNITY
 - FIRE/RESCUE STATION
 - GOVERNMENT
 - HOSPITAL
 - LIBRARY
 - POLICE STATION
 - POST OFFICE
 - RECREATION/TOURISM
 - SCHOOL
- Parcel Info
 - Current Parcels
 - Parcels
- Comp Plan Land Use Info
 - Comprehensive Plan Area
 - Southern and Western Use
 - Neighborhood Density Use
 - Neighborhood Mixed Use
 - Urban Density Residential
 - Community Mixed Use
 - Regional Mixed Use
 - Office / P & O / Flex / Light
 - Industrial
 - Institutional
 - Parks and Green Systems

Institutional

Parks and Green Systems



GIS-Web
Geographic Data Services
www.albemarle.org
(434) 296-5832

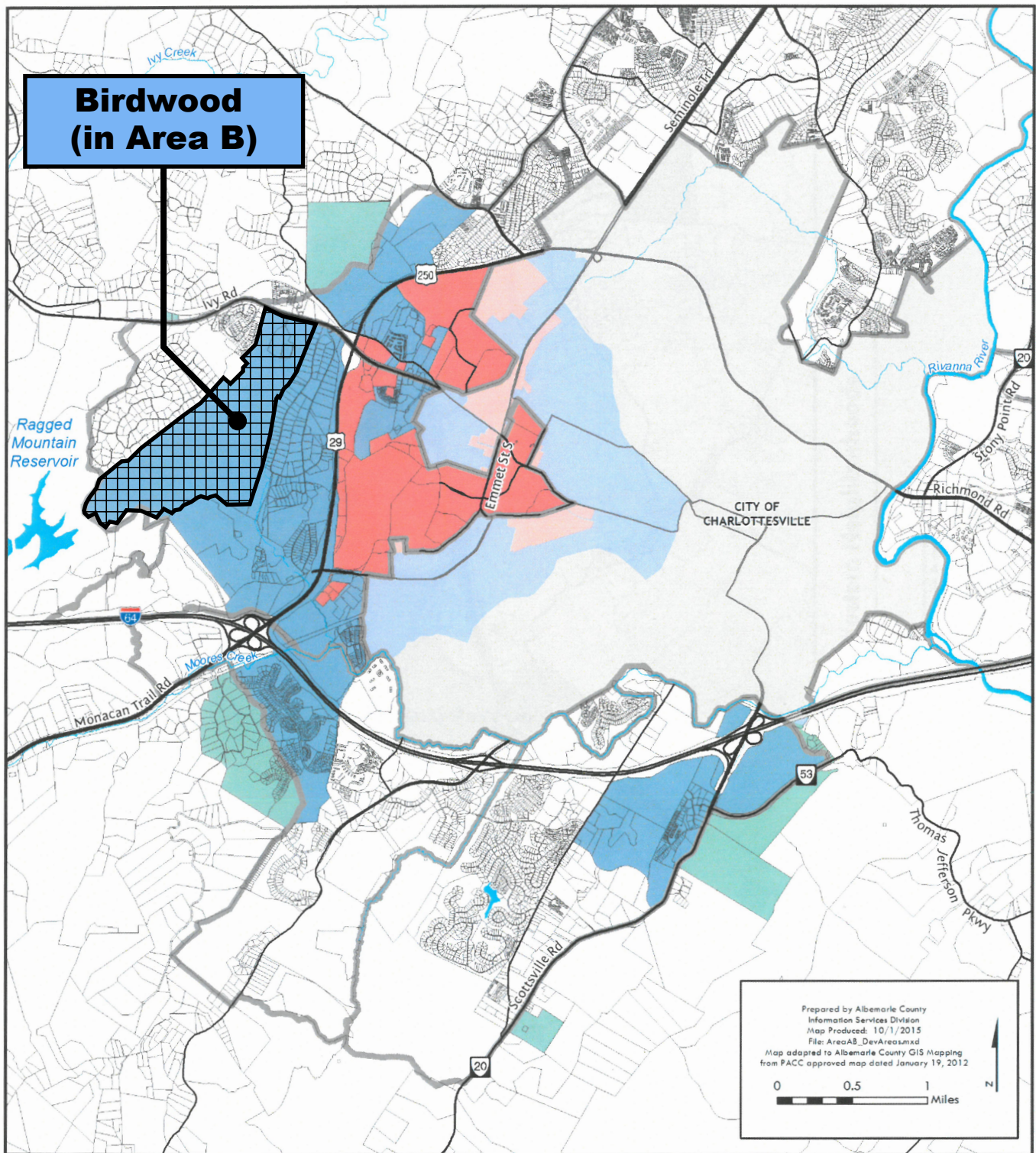


Figure 2: Areas A and B

