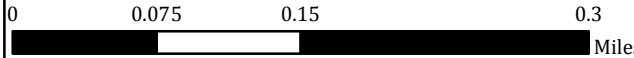
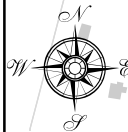
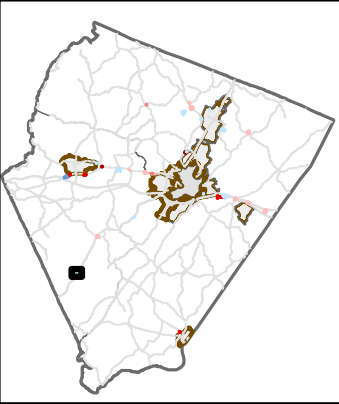


Covesville

5730 HEARDS MOUNTAIN RD
5729 HEARDS MOUNTAIN RD
5678 HEARDS MOUNTAIN RD
109-33
5048 HEARDS MOUNTAIN RD
5632 HEARDS MOUNTAIN RD

5170 MONACAN TRAIL RD

MONACAN TRAIL RD



Buildings

Roads

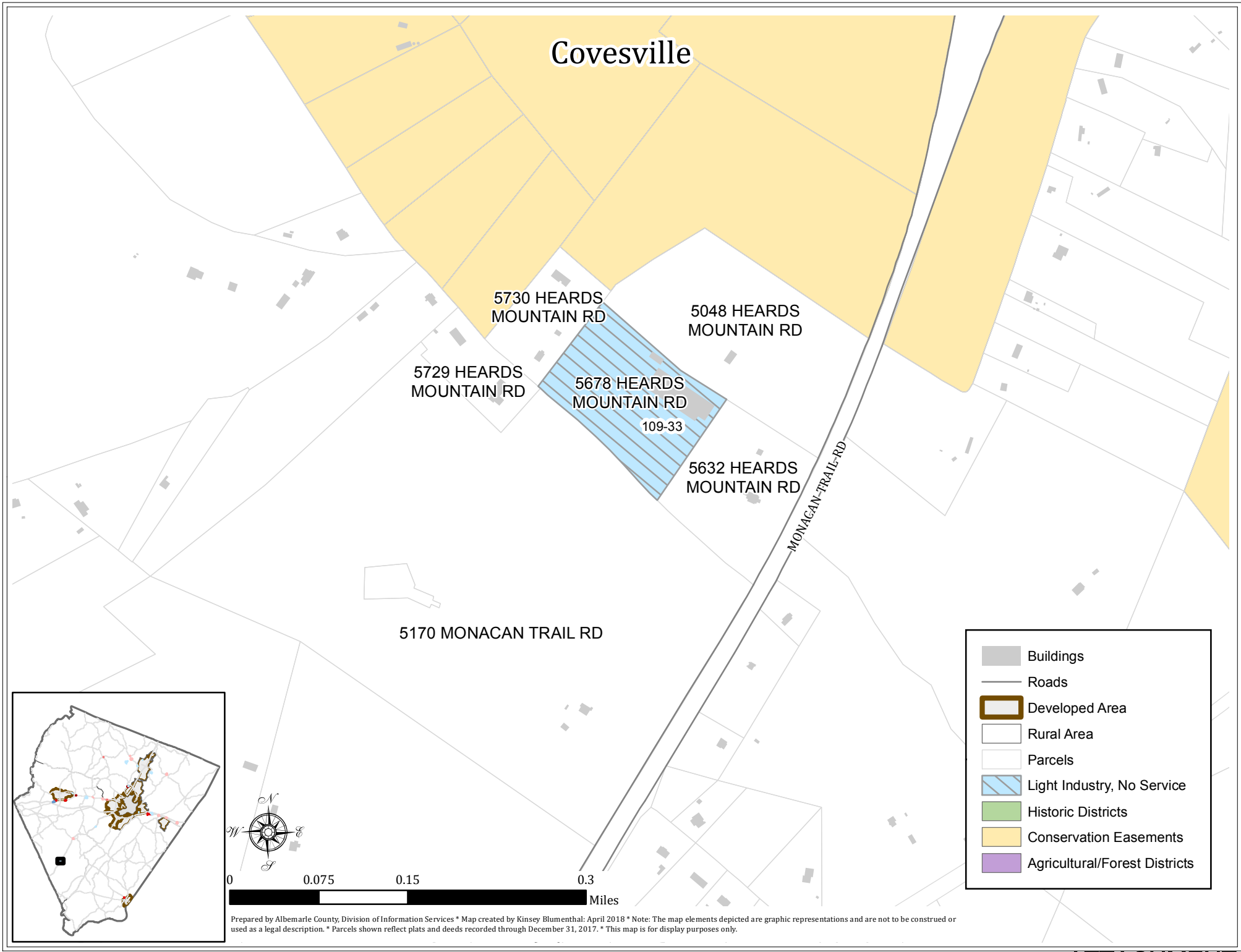
Developed Area

Rural Area

Parcels

Light Industry, No Service

Prepared by Albemarle County, Division of Information Services * Map created by Kinsey Blumenthal: April 2018 * Note: The map elements depicted are graphic representations and are not to be construed or used as a legal description. * Parcels shown reflect plats and deeds recorded through December 31, 2017. * This map is for display purposes only.



Earlysville/Airport Rd

BUCK MOUNTAIN RD

ADVANCE MILLS RD

31-38

2374 BUCK MOUNTAIN RD

31A-A
31-14 31-32

26 REAS FORD RD

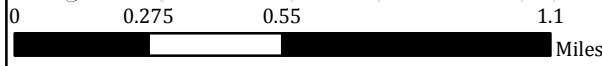
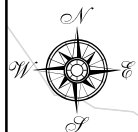
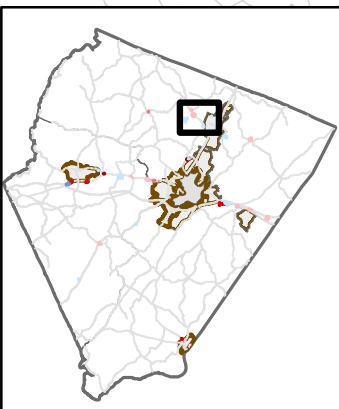
EARLYSVILLE RD

31-10 31-21F
31-21A1
395 REAS FORD RD
31-21A

32-9J1

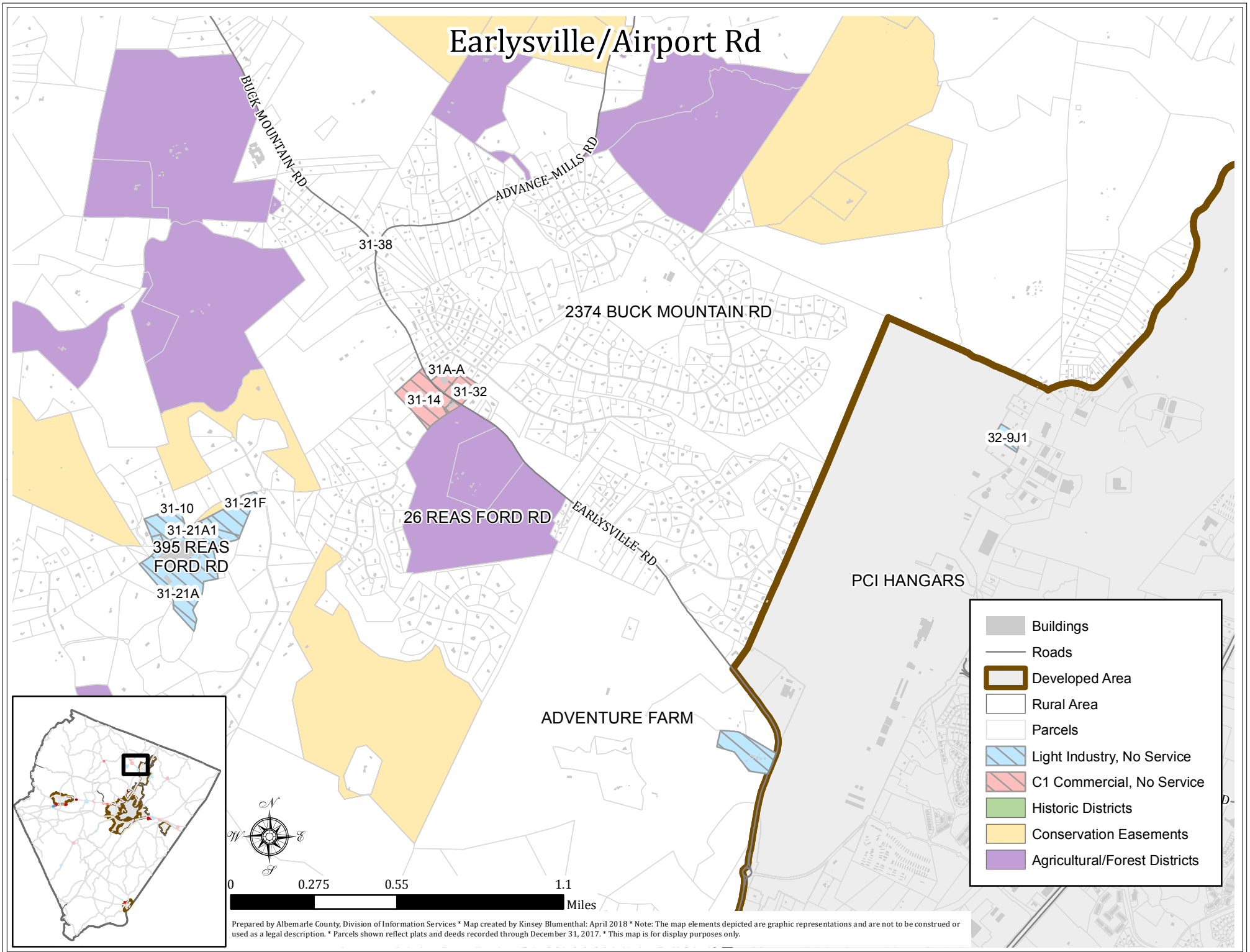
PCI HANGARS

ADVENTURE FARM



- Buildings
- Roads
- Developed Area
- Rural Area
- Parcels
- Light Industry, No Service
- C1 Commercial, No Service

Prepared by Albemarle County, Division of Information Services * Map created by Kinsey Blumenthal: April 2018 * Note: The map elements depicted are graphic representations and are not to be construed or used as a legal description. * Parcels shown reflect plats and deeds recorded through December 31, 2017. * This map is for display purposes only.



Free Union

2374 BUCK MOUNTAIN RD

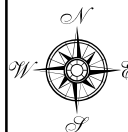
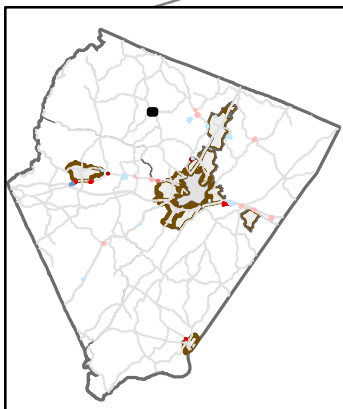
29-29

4303 FREE UNION RD

FREE-UNION-RD

BUCK-MOUNTAIN-RD

MILLINGTON-RD



0 0.035 0.07 0.14 Miles

- Buildings
- Roads
- Developed Area
- Rural Area
- Parcels
- Commercial Office, No Service

Prepared by Albemarle County, Division of Information Services * Map created by Kinsey Blumenthal: April 2018 * Note: The map elements depicted are graphic representations and are not to be construed or used as a legal description. * Parcels shown reflect plats and deeds recorded through December 31, 2017. * This map is for display purposes only.

Free Union

2374 BUCK MOUNTAIN RD

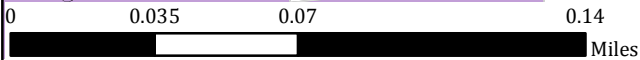
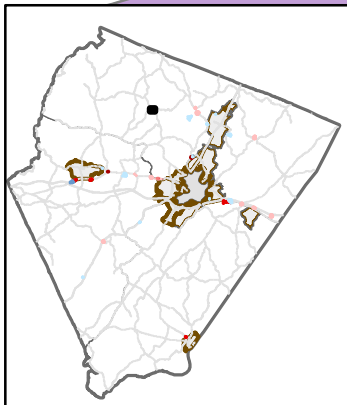
29-29

4303 FREE UNION RD

FREE-UNION RD

BUCK MOUNTAIN RD

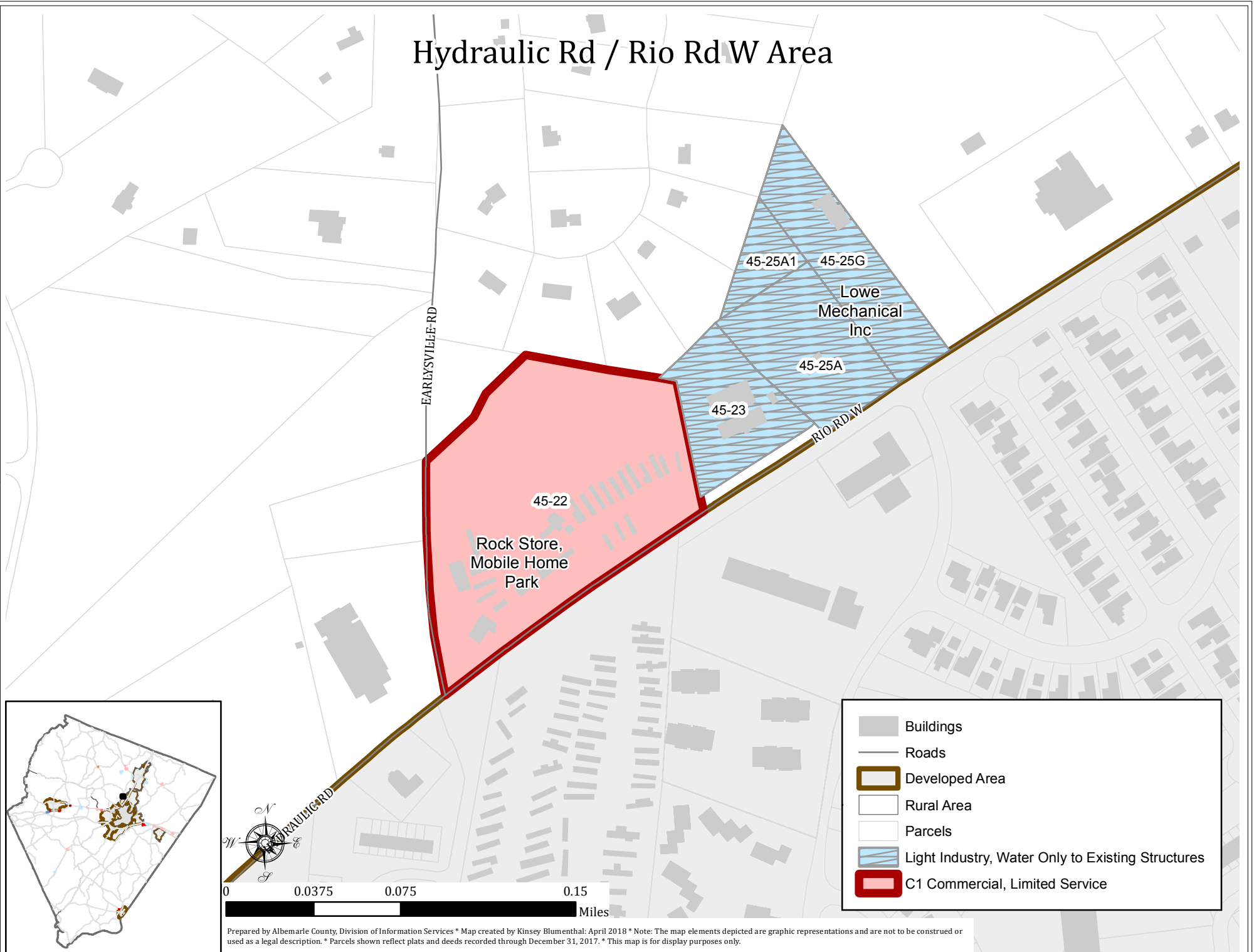
MILLINGTON RD



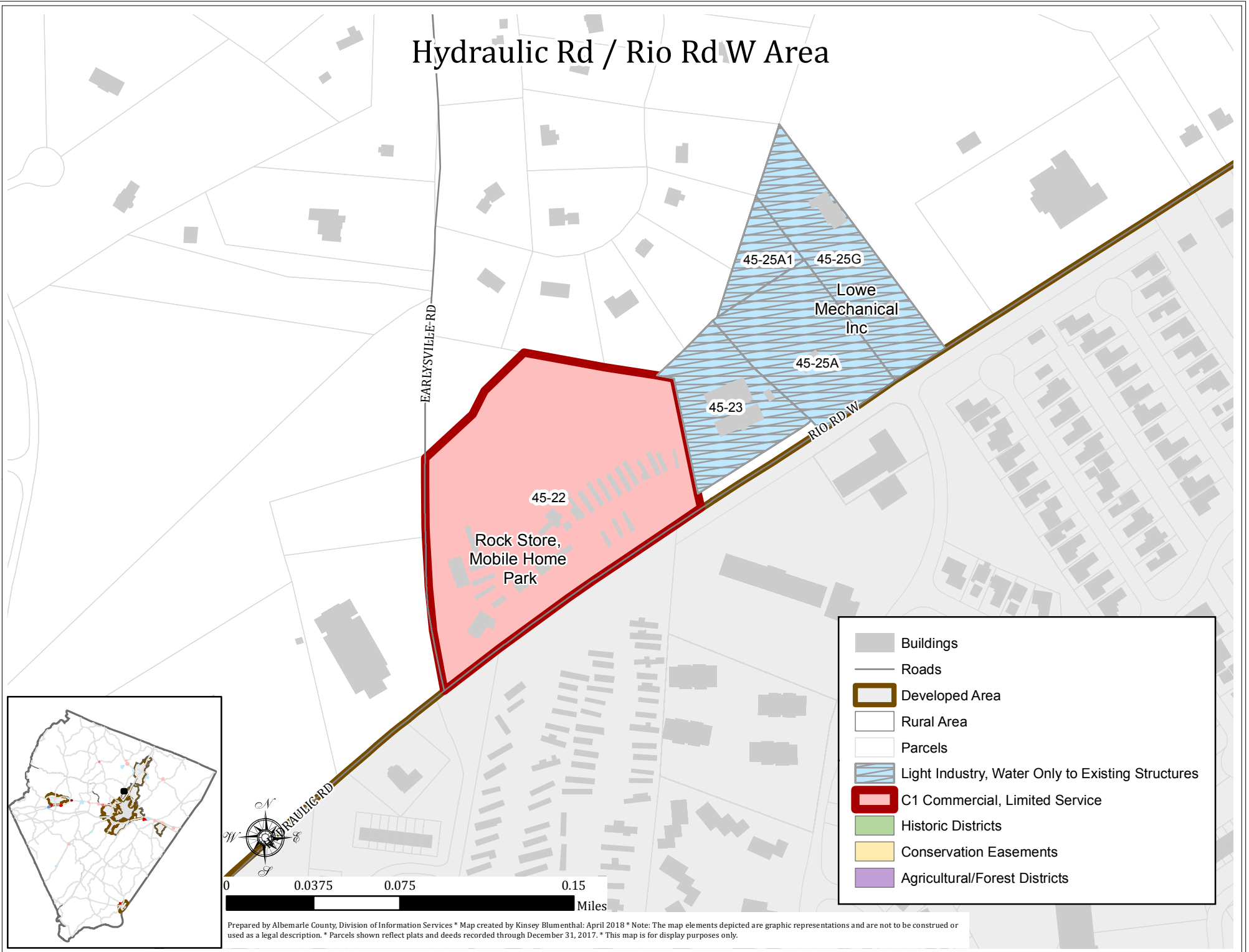
- Buildings
- Roads
- Developed Area
- Rural Area
- Parcels
- Commercial Office, No Service
- Historic Districts
- Conservation Easements
- Agricultural/Forest Districts

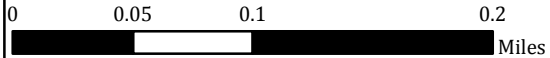
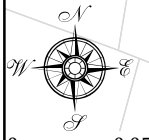
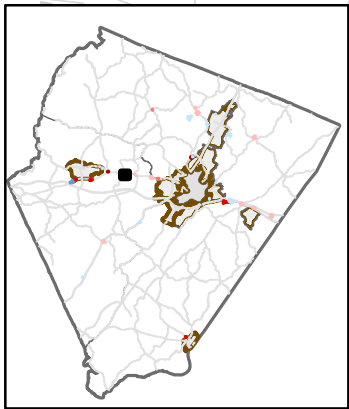
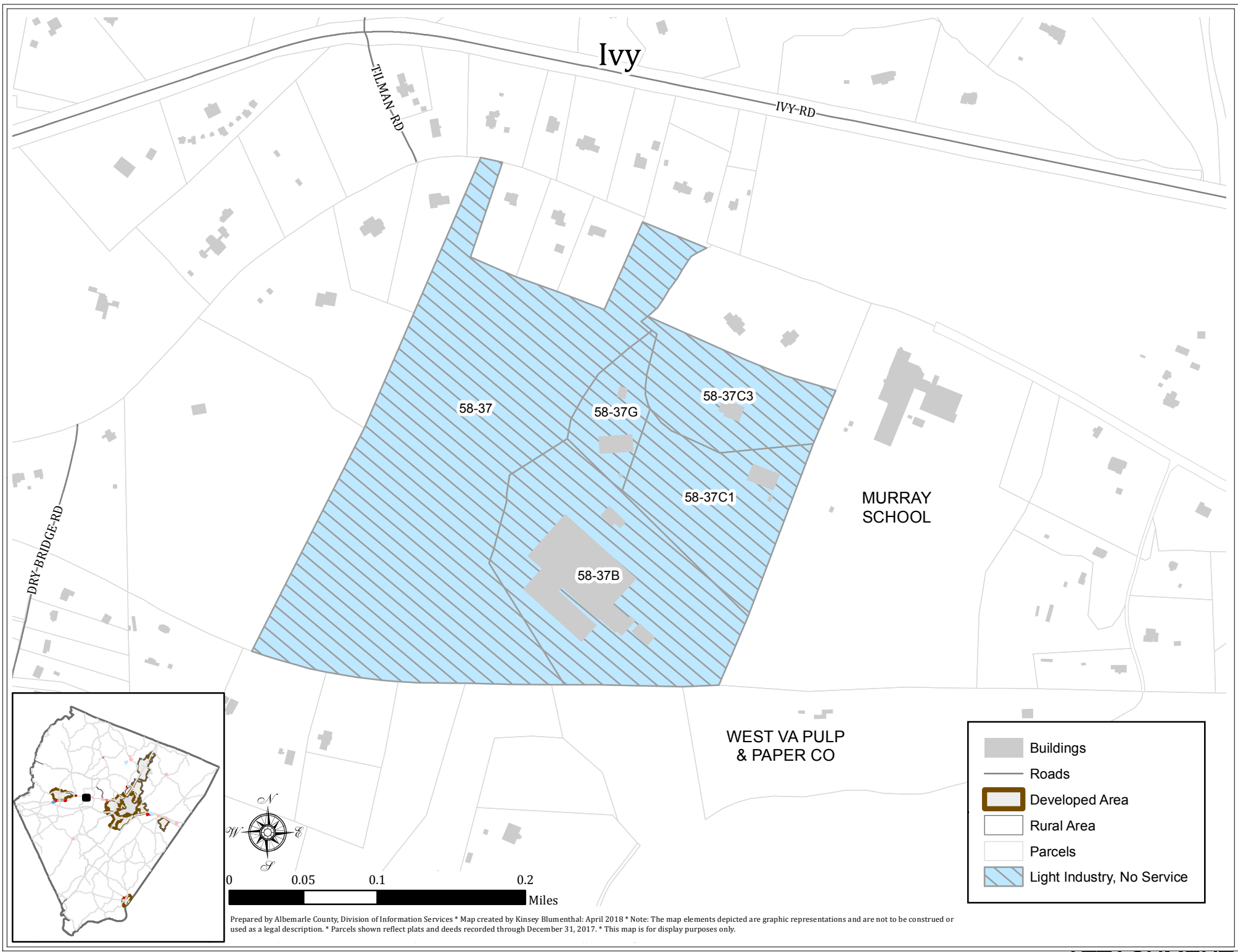
Prepared by Albemarle County, Division of Information Services * Map created by Kinsey Blumenthal: April 2018 * Note: The map elements depicted are graphic representations and are not to be construed or used as a legal description. * Parcels shown reflect plats and deeds recorded through December 31, 2017. * This map is for display purposes only.

Hydraulic Rd / Rio Rd W Area



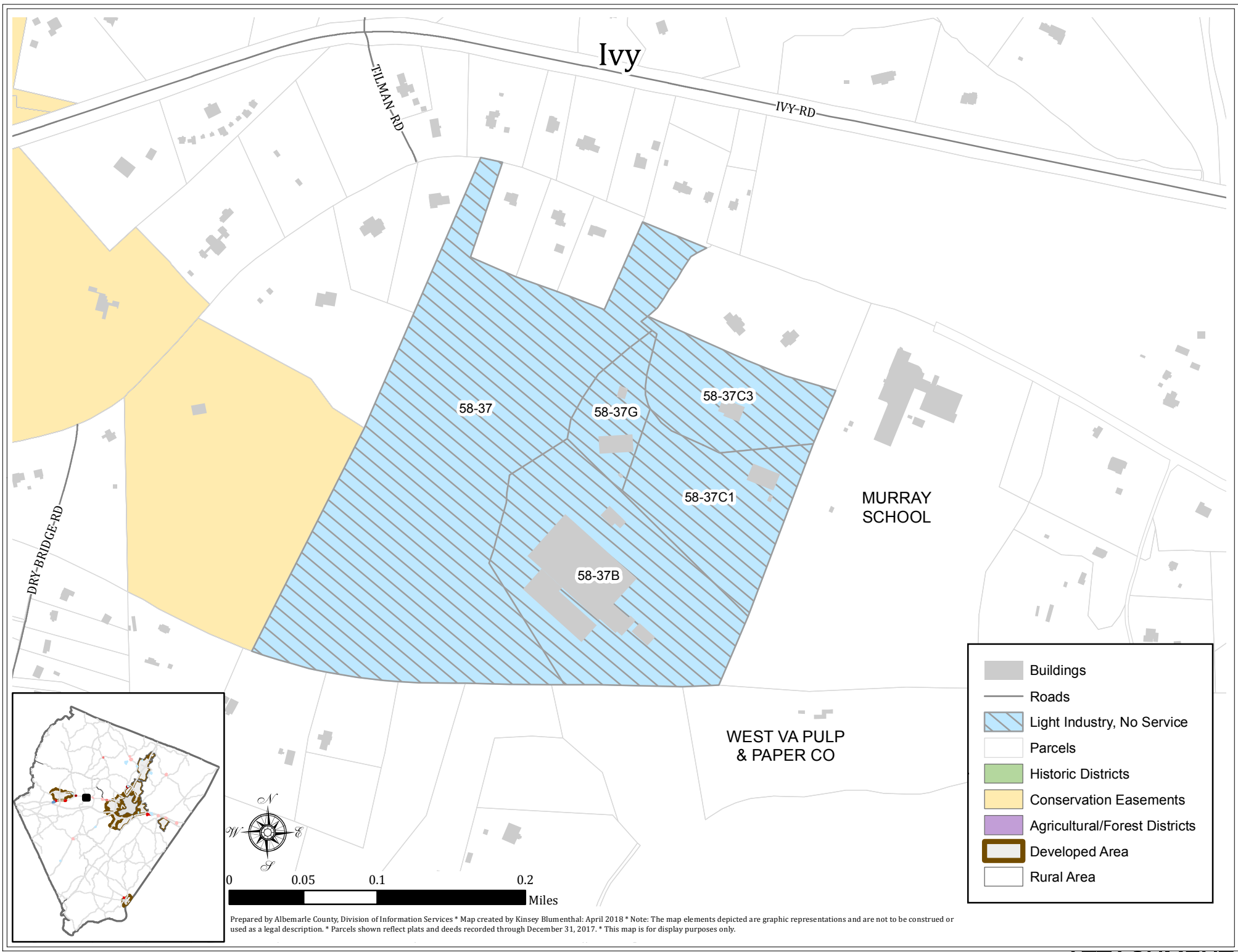
Hydraulic Rd / Rio Rd W Area





- Buildings
- Roads
- Developed Area
- Rural Area
- Parcels
- Light Industry, No Service

Prepared by Albemarle County, Division of Information Services * Map created by Kinsey Blumenthal: April 2018 * Note: The map elements depicted are graphic representations and are not to be construed or used as a legal description. * Parcels shown reflect plats and deeds recorded through December 31, 2017. * This map is for display purposes only.



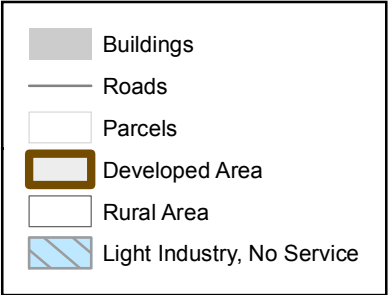
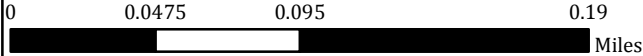
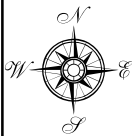
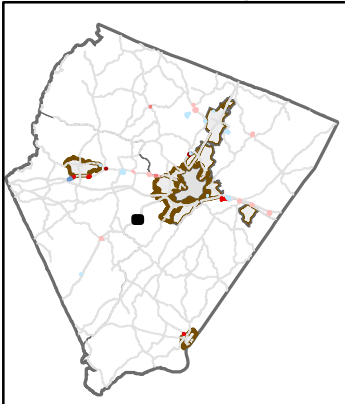
Monacan Trail / Gleco Mills Lane

2014 MONACAN TRAIL RD

MONACAN-TRAIL-RD

PUFF, INC

88-26A



Prepared by Albemarle County, Division of Information Services * Map created by Kinsey Blumenthal: April 2018 * Note: The map elements depicted are graphic representations and are not to be construed or used as a legal description. * Parcels shown reflect plats and deeds recorded through December 31, 2017. * This map is for display purposes only.

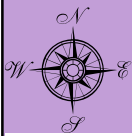
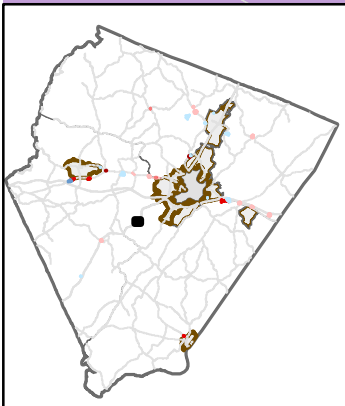
Monacan Trail / Gleco Mills Lane

2014 MONACAN TRAIL RD

MONACAN-TRAIL-RD

PUFF, INC

88-26A

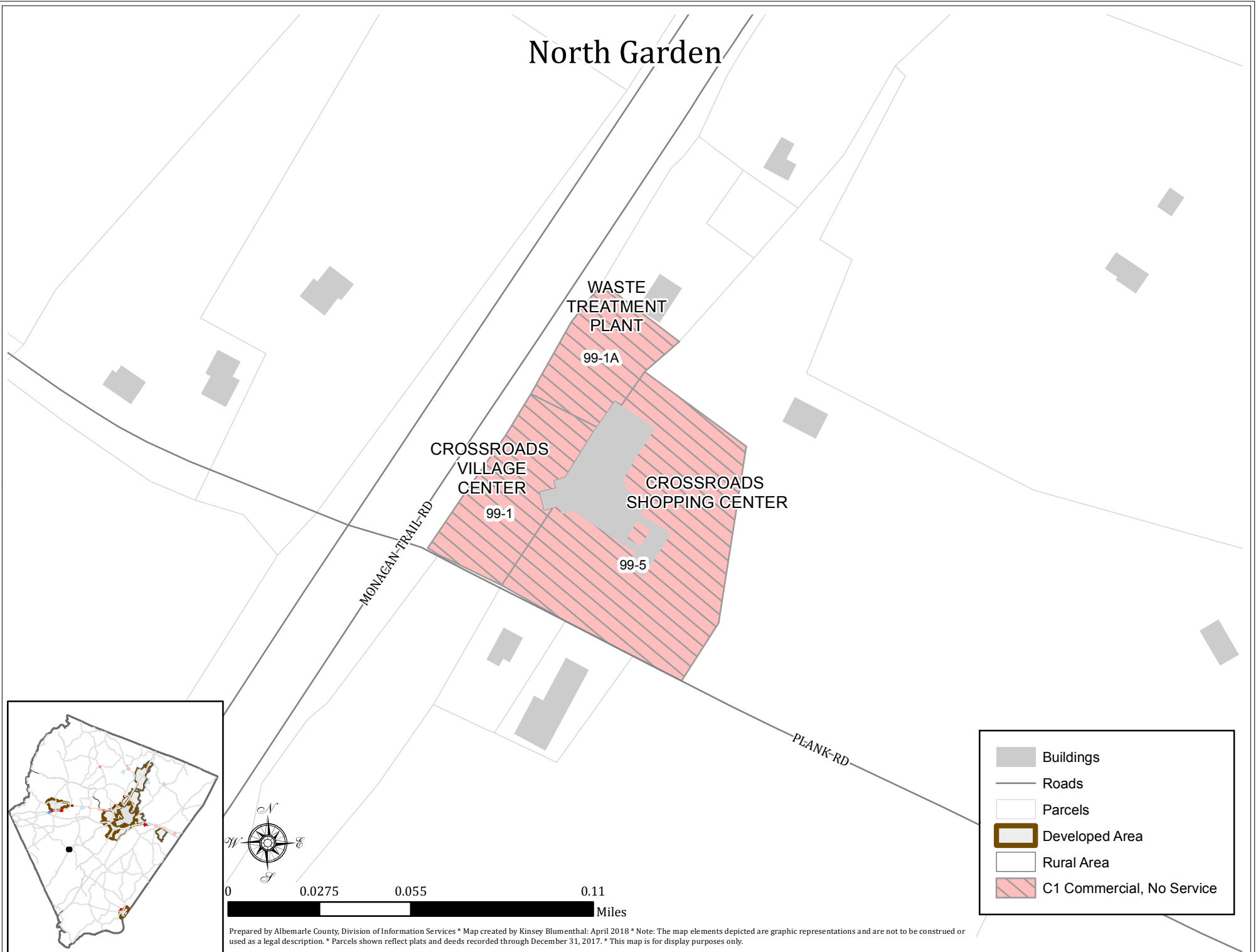


0 0.0475 0.095 0.19 Miles

- Buildings
- Roads
- Parcels
- Developed Area
- Rural Area
- Light Industry, No Service
- Historic Districts
- Conservation Easements
- Agricultural/Forest Districts

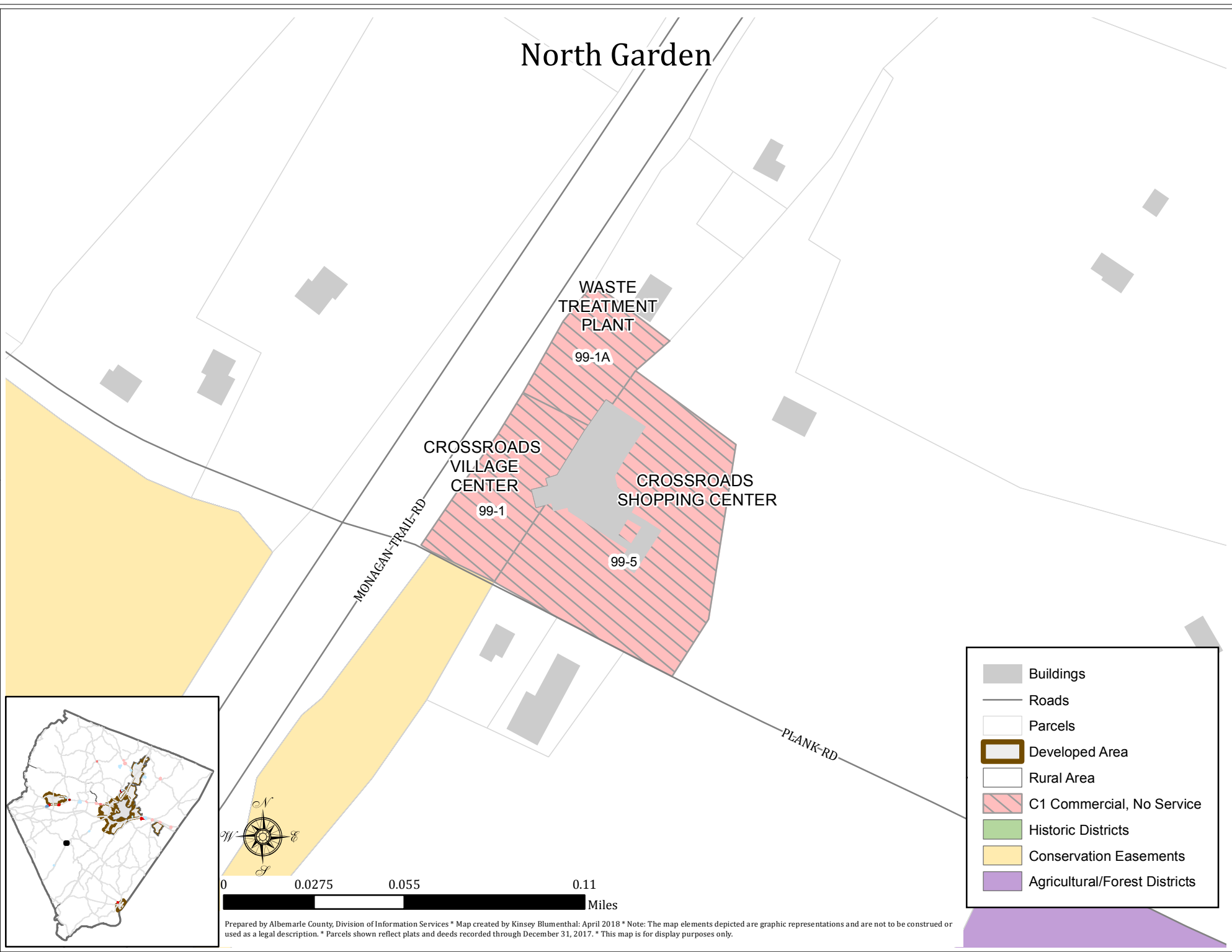
Prepared by Albemarle County, Division of Information Services * Map created by Kinsey Blumenthal: April 2018 * Note: The map elements depicted are graphic representations and are not to be construed or used as a legal description. * Parcels shown reflect plats and deeds recorded through December 31, 2017. * This map is for display purposes only.

North Garden

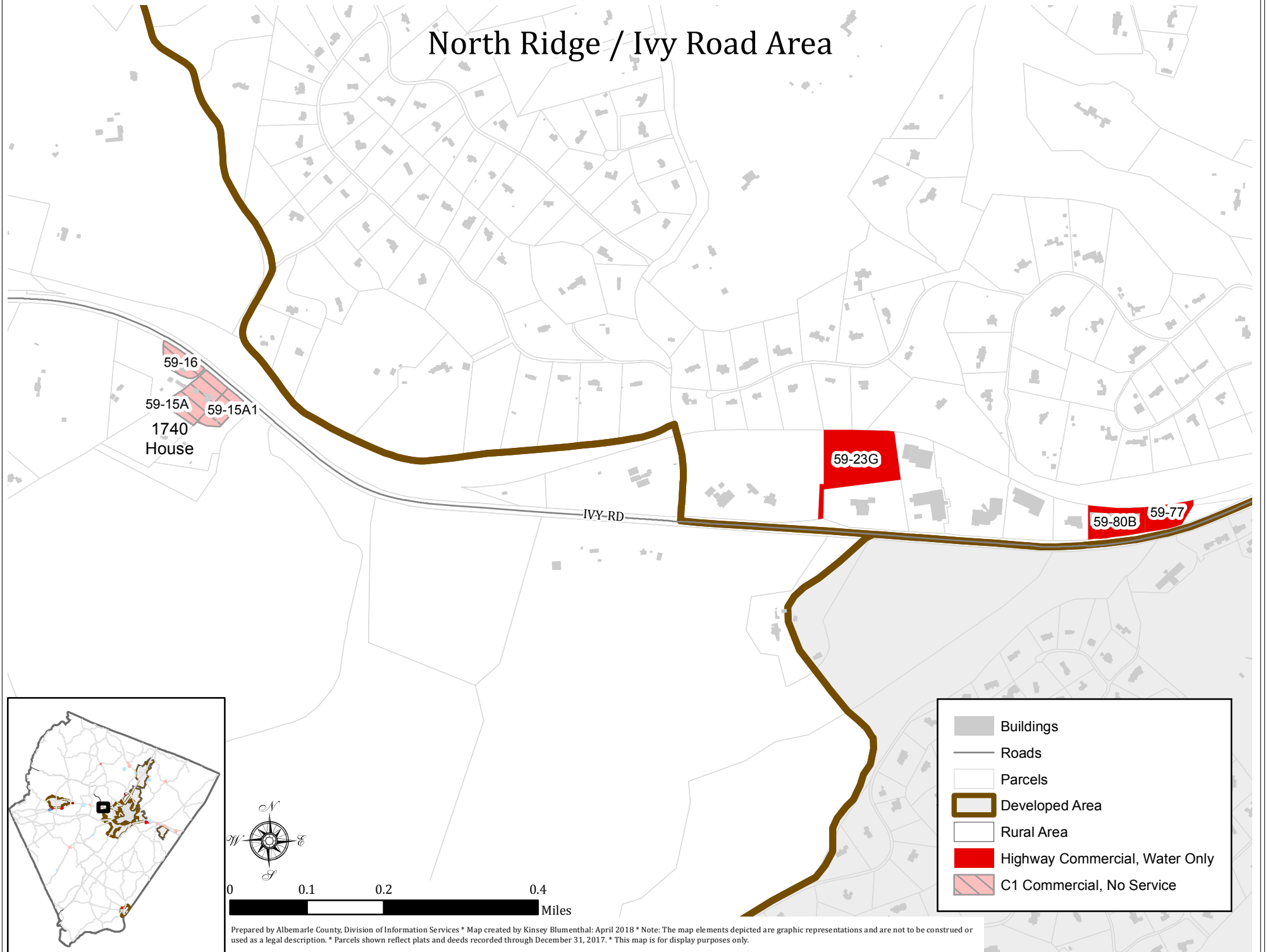


Prepared by Albemarle County, Division of Information Services * Map created by Kinsey Blumenthal: April 2018 * Note: The map elements depicted are graphic representations and are not to be construed or used as a legal description. * Parcels shown reflect plats and deeds recorded through December 31, 2017. * This map is for display purposes only.

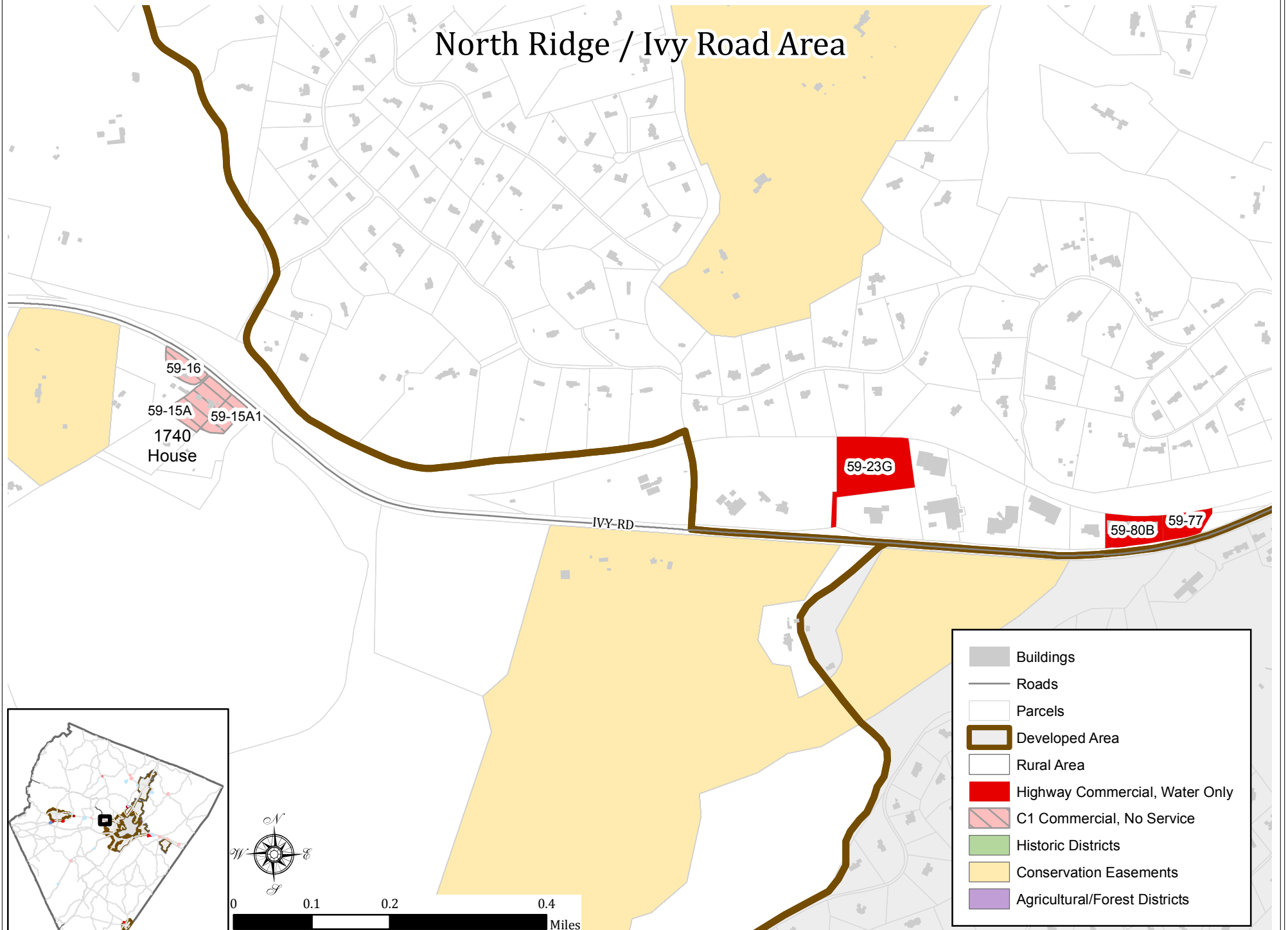
North Garden



North Ridge / Ivy Road Area

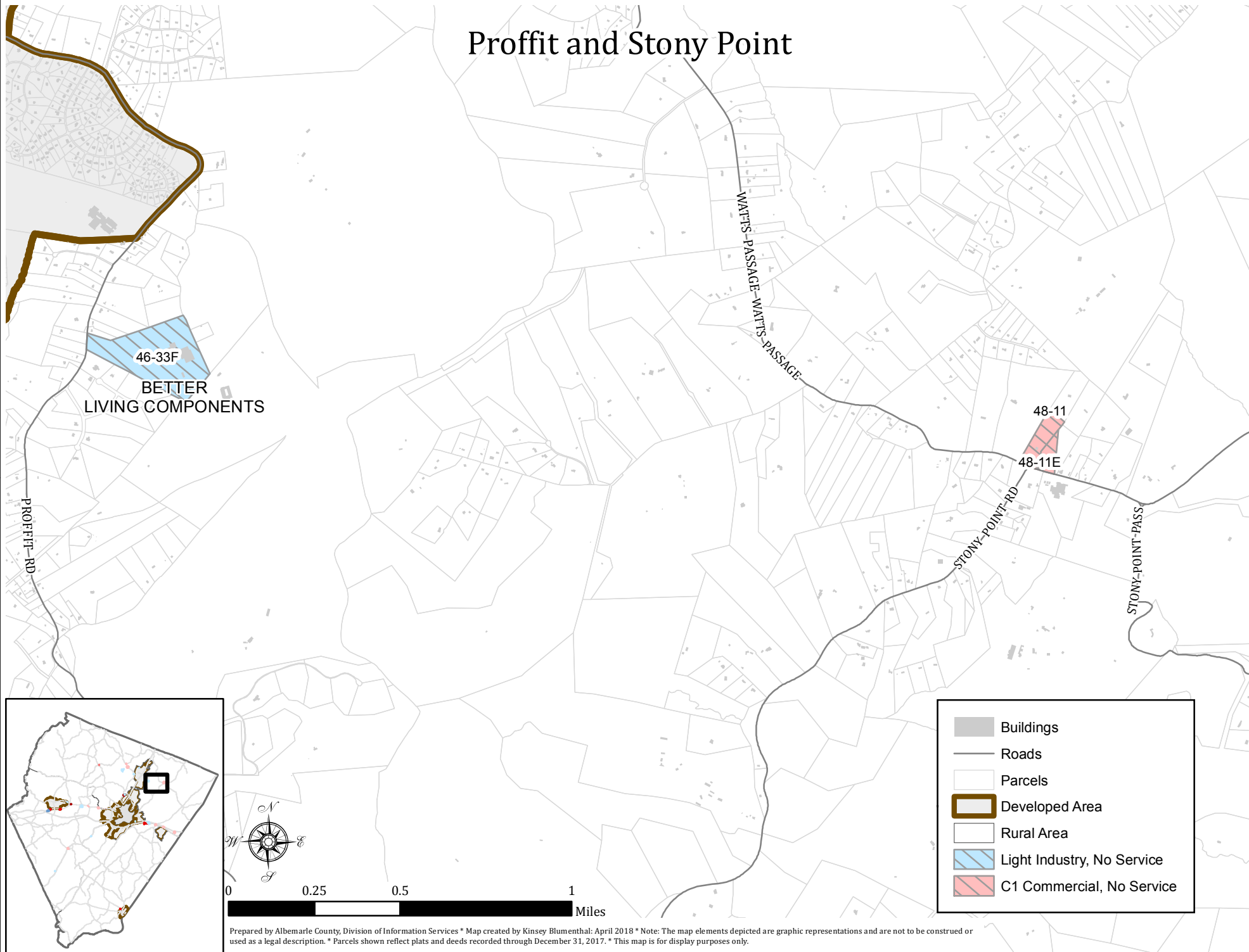


North Ridge / Ivy Road Area

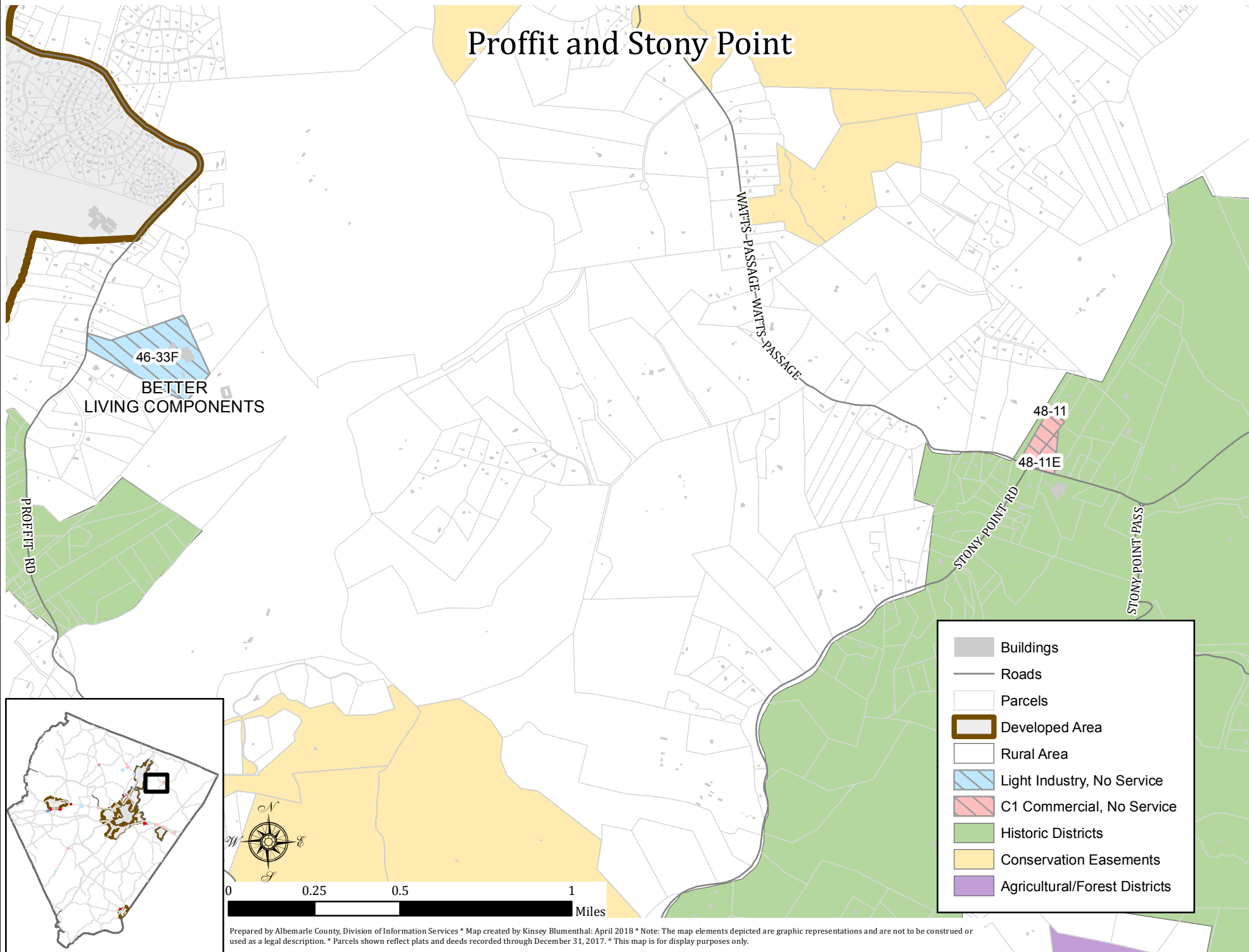


Prepared by Albemarle County, Division of Information Services * Map created by Kinsey Blumenthal: April 2018 * Note: The map elements depicted are graphic representations and are not to be construed or used as a legal description. * Parcels shown reflect plats and deeds recorded through December 31, 2017. * This map is for display purposes only.

Proffit and Stony Point

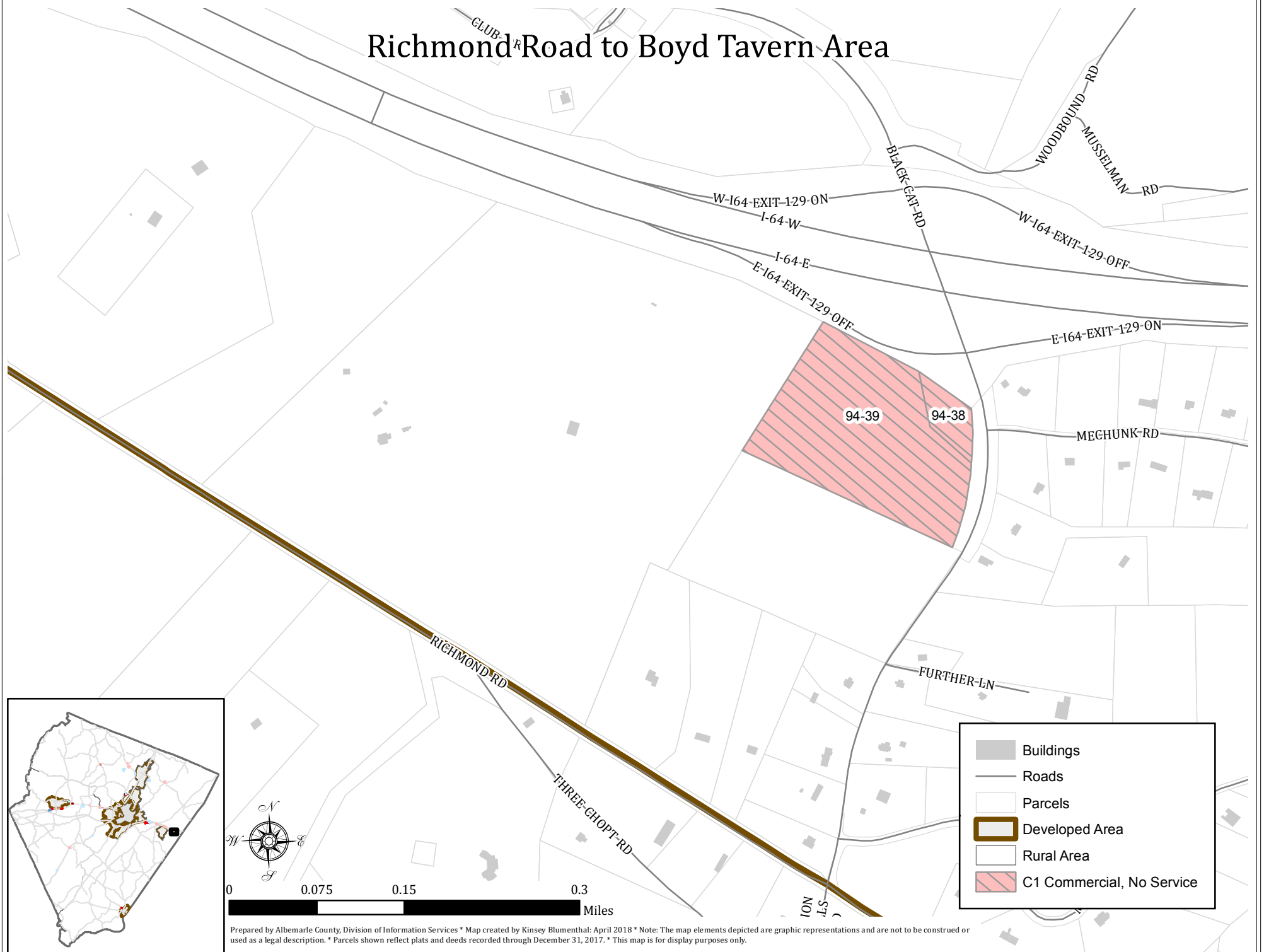


Proffit and Stony Point



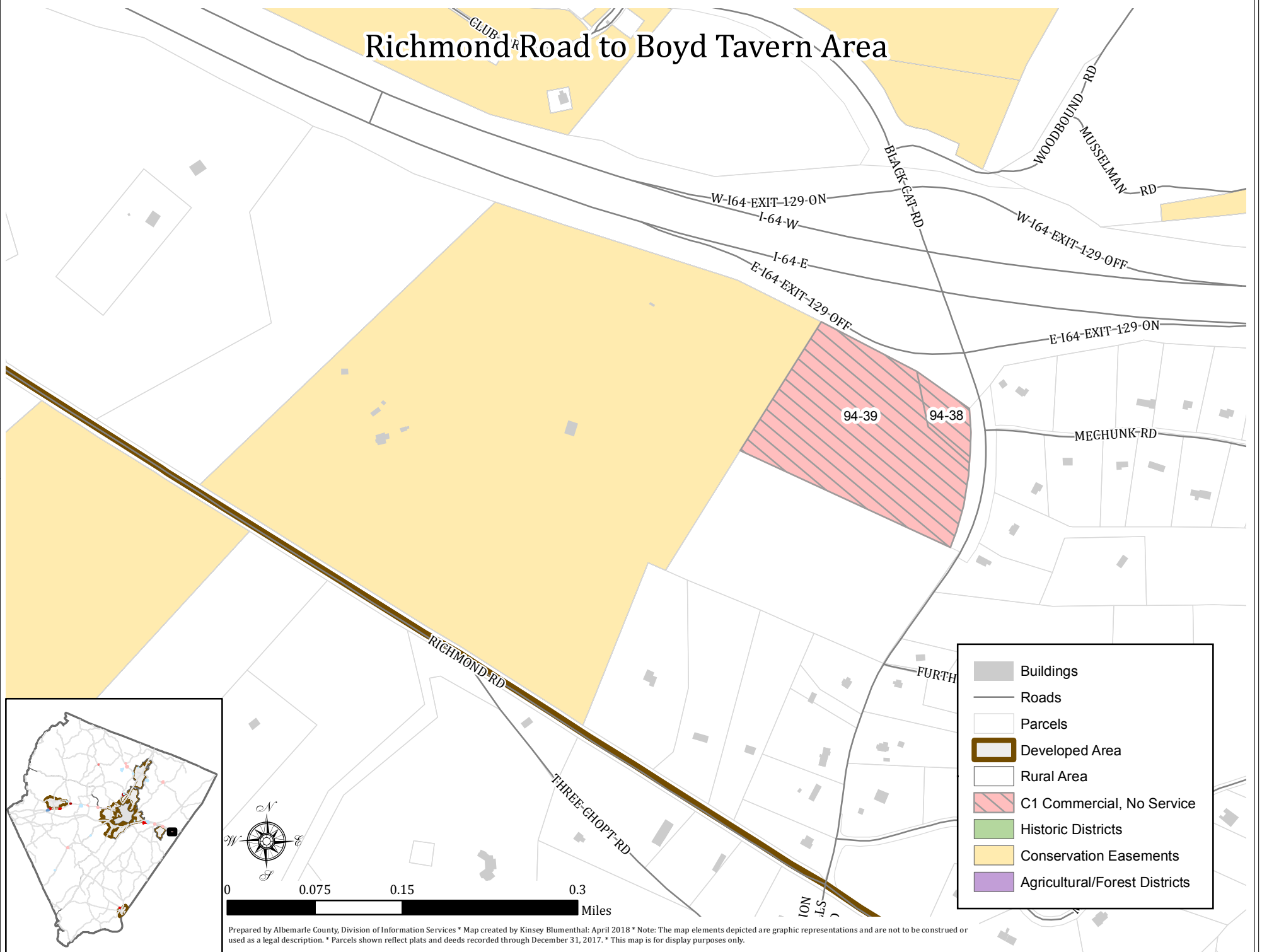
Prepared by Albemarle County, Division of Information Services * Map created by Kinsey Blumenthal: April 2018 * Note: The map elements depicted are graphic representations and are not to be construed or used as a legal description. * Parcels shown reflect plats and deeds recorded through December 31, 2017. * This map is for display purposes only.

Richmond Road to Boyd Tavern Area



Prepared by Albemarle County, Division of Information Services * Map created by Kinsey Blumenthal: April 2018 * Note: The map elements depicted are graphic representations and are not to be construed or used as a legal description. * Parcels shown reflect plats and deeds recorded through December 31, 2017. * This map is for display purposes only.

Richmond Road to Boyd Tavern Area



Scottsville

8232 SCOTTSVILLE RD

8205 SCOTTSVILLE RD

130-49

130-48

AUGUSTA CO-OP

Buildings

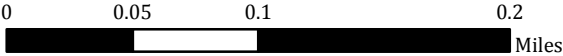
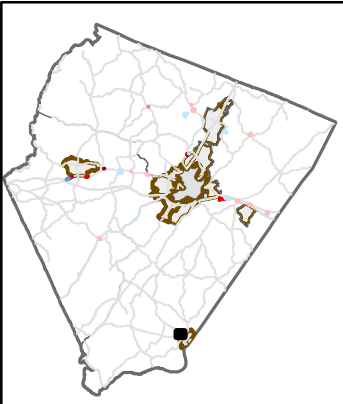
Roads

Parcels

Developed Area

Rural Area

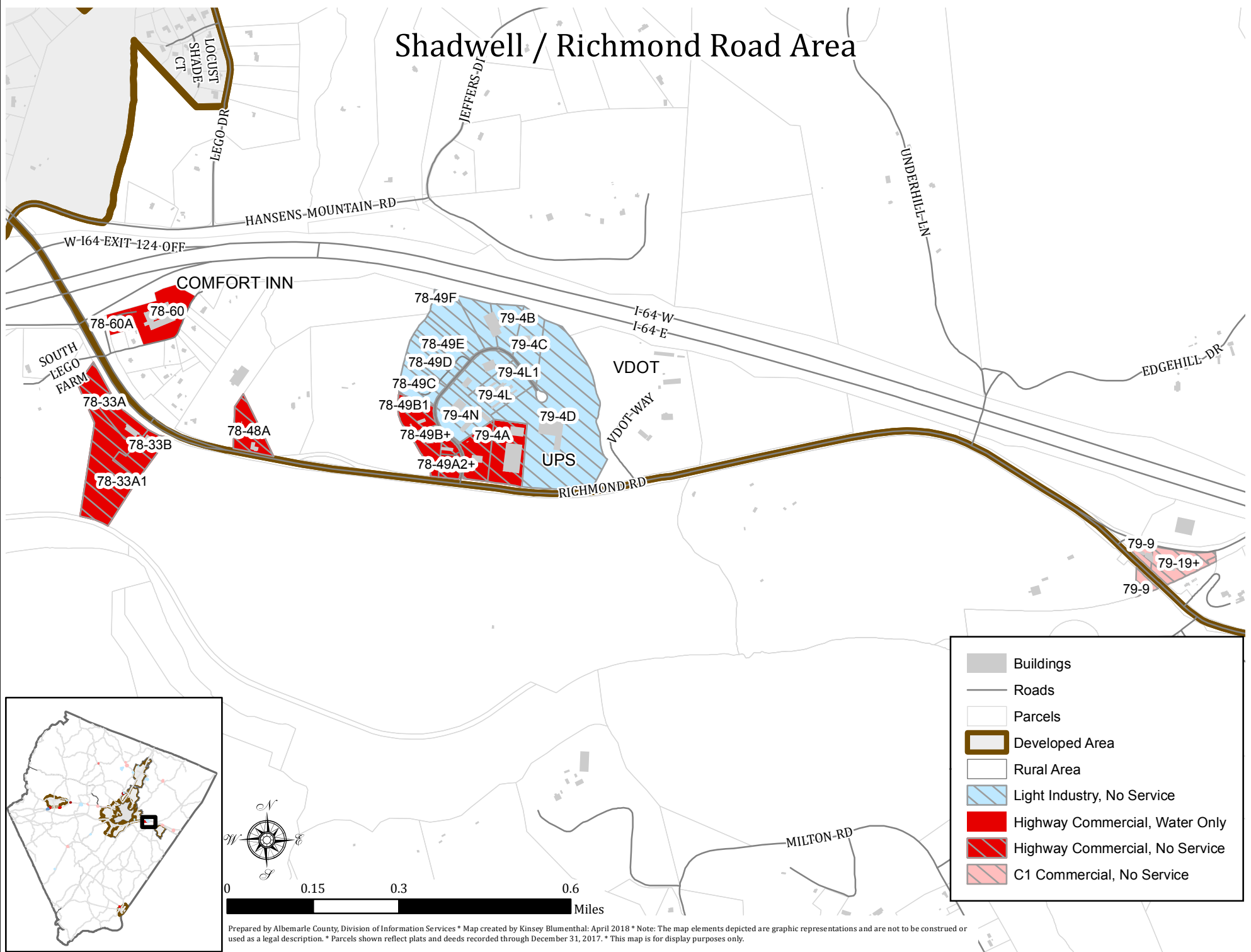
Highway Commercial, No Service



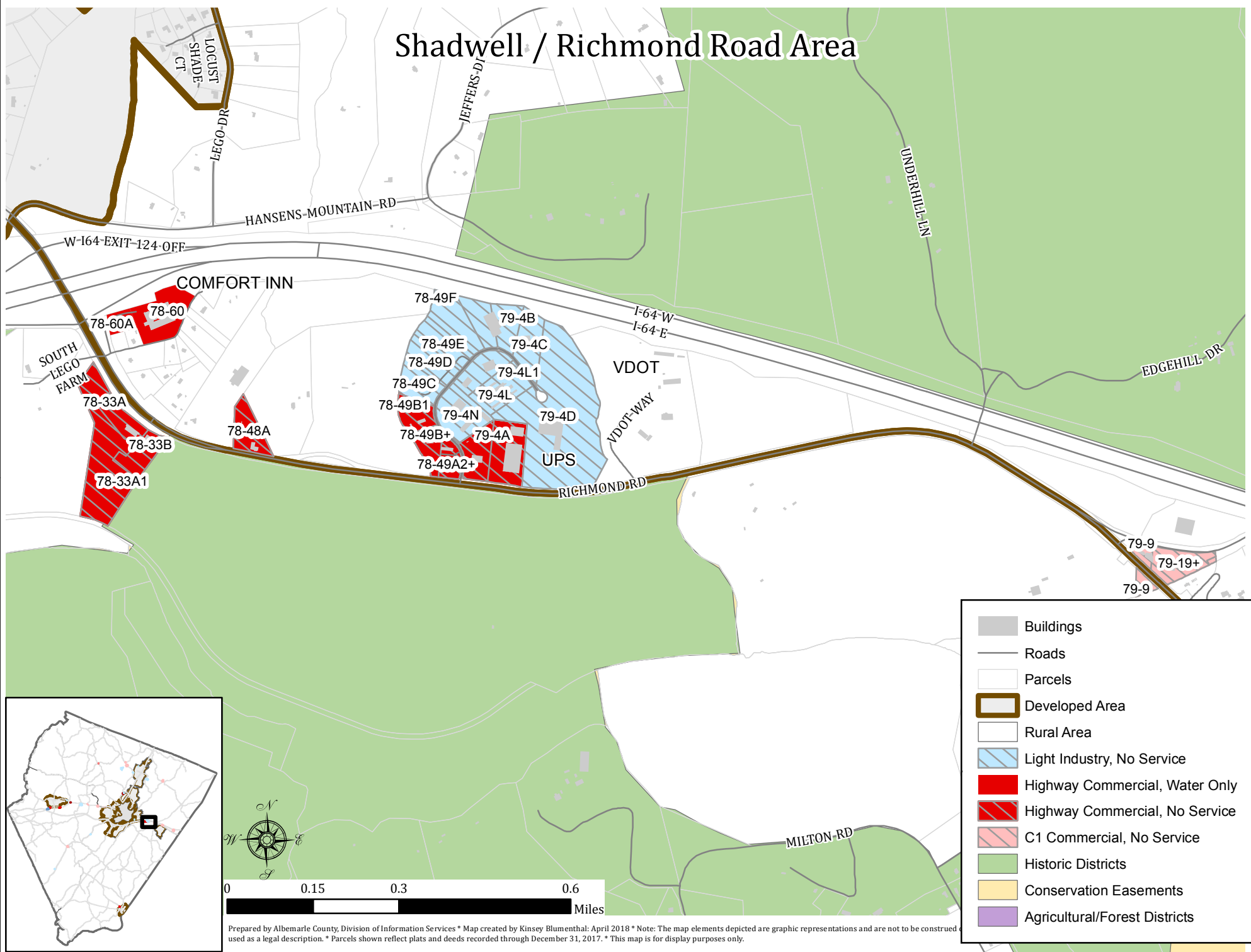
Prepared by Albemarle County, Division of Information Services * Map created by Kinsey Blumenthal: April 2018 * Note: The map elements depicted are graphic representations and are not to be construed or used as a legal description. * Parcels shown reflect plats and deeds recorded through December 31, 2017. * This map is for display purposes only.



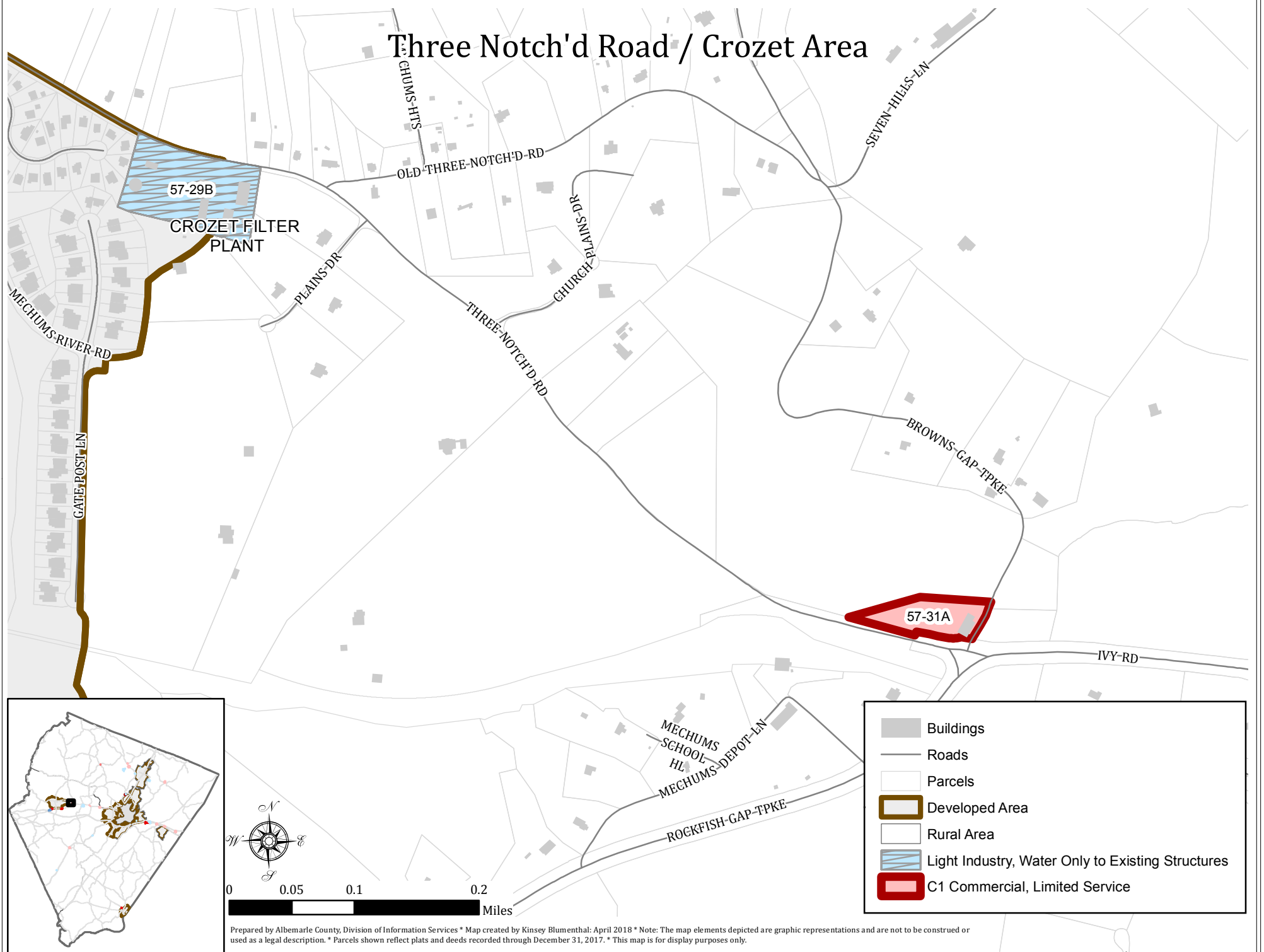
Shadwell / Richmond Road Area



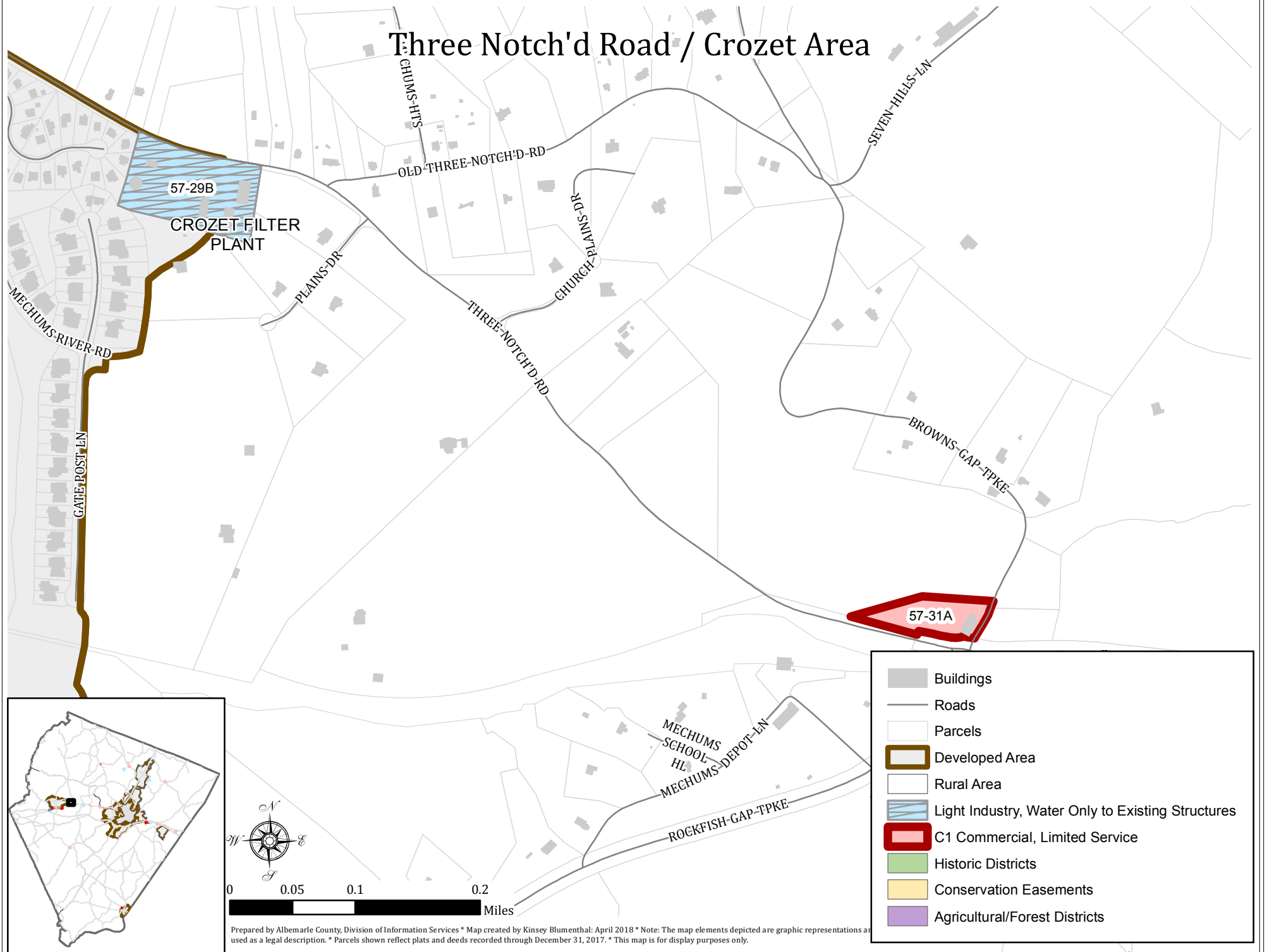
Shadwell / Richmond Road Area



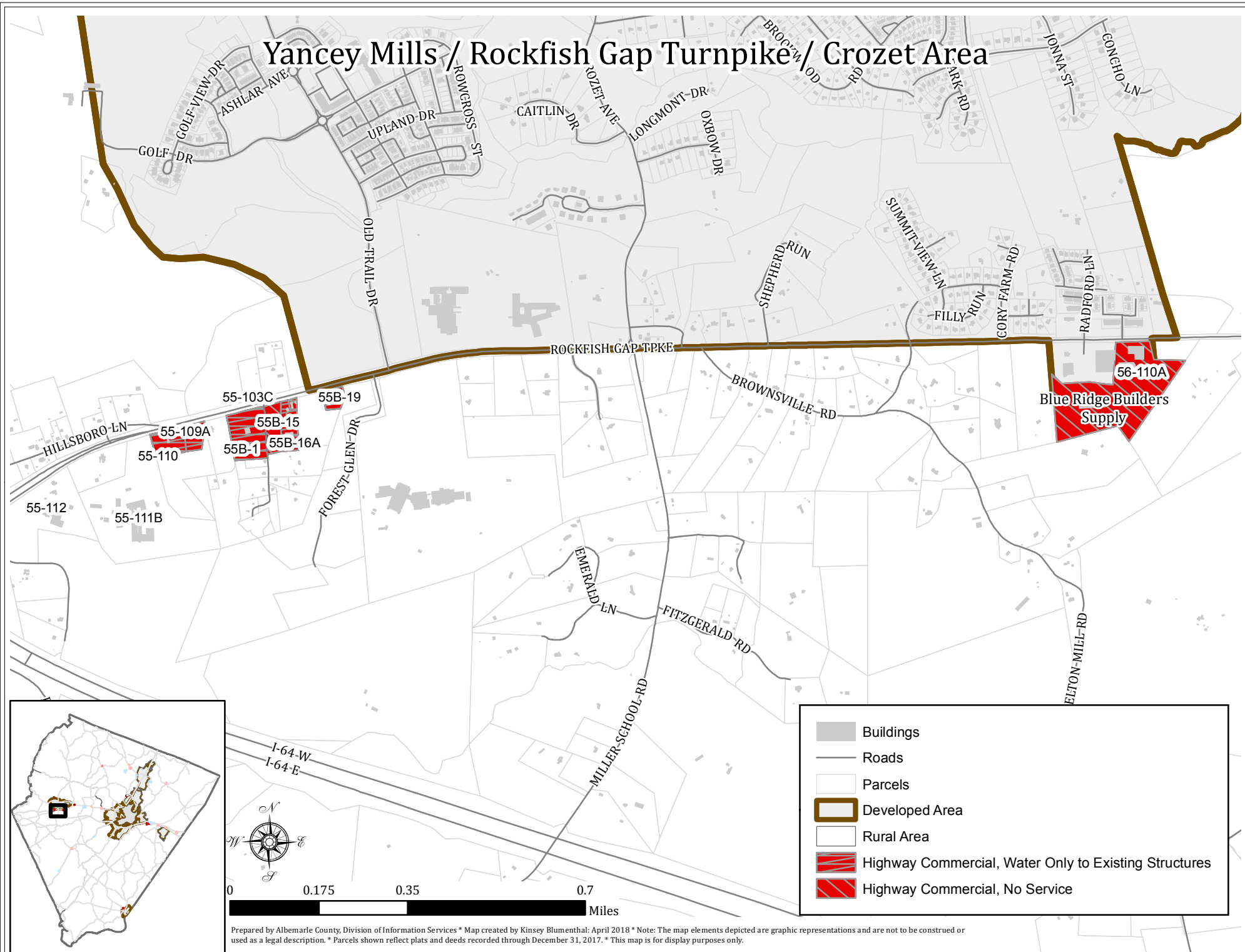
Three Notch'd Road / Crozet Area



Three Notch'd Road / Crozet Area



Yancey Mills / Rockfish Gap Turnpike / Crozet Area



Yancey Mills / Rockfish Gap Turnpike / Crozet Area

