



MEET COCO 2016 CASPCA MASCOT

Don't believe all the hullabaloo that superstitious folks say about black cats!

Noir-furred felines in some cultures are thought to be omens of momentous happenings on the horizon, including plentiful suitors for those looking for love and safe passage home for sailors. It also is true that black cats are often overlooked in animal shelters due to their "bad luck" moniker or their reputation for having a somewhat common appearance.

Hogwash! The Craig household never has been without at least one black cat (right now there are four on their farm), and Coco has been the presiding queen since she was adopted from the CASPCA in 2006. Despite her regal status, she is not the least bit pretentious or snooty and is quite accepting and relaxed until dinnertime, when her enthusiasm

has been known to reach fever-pitch levels. Coco is unlike some of her rather finicky siblings, as she is totally unconcerned about her physical appearance, often requiring grooming assistance from others, and her parents feel that she's lucky to be sheathed all in black. Likes: DRY KIBBLE, basking beneath the hummingbird feeder (just friends, we promise!), and chasing her tail in the bidet. Dislikes: thunderstorms, a pesky brother who wants to wrestle, and parents who ration dry kibble. Black cats rule!





MISSION

Advance the compassionate treatment of animals by providing sheltering, medical care, and behavioral services for dogs and cats; promoting permanent, caring homes; and furthering education and outreach

VISION

Healthy animals in caring homes

TABLE OF CONTENTS

1 WELCOME

2 BOARD & LEADERSHIP

5 ABOUT US

7 SERVICES & OUTREACH

10 RESULTS & STATS

13 YOUTH

14 COMMUNITY

15 VOLUNTEERS & FOSTERS

19 MEET OUR STAFF

20 COST OF CARE

23 SAVE STORIES

25 EVENTS

29 FAQs

30 FISCAL

31 PHILANTHROPY

32 ACKNOWLEDGMENTS

35 THANK YOU

WELCOME



Anyone with a pet has long thought of their animal companion as a member of the family. Animal family members give us so much, and they ask for so little in return. Our pets are family we get to choose, who are delighted that we chose them.

The CASPCA is in the business of making and reuniting families. Over 31,000 animals in our care have helped grow and complete Charlottesville-area families since we became a No Kill community in 2006. During that time, we have spayed and neutered over 56,000 animals and reunited over 6,300 lost pets with their forever families. Since we began microchipping in 2013, we have microchipped more than 9,400 animals. And that's not all. In 2016, we were proud to celebrate 10 years as a No Kill community. Recently, we took our mission on the road with our new Compassionate Care-A-Van, a mobile

animal care and adoption unit that can transport animals to our shelter for spay/neuter surgeries, bring basic care to pets in underserved parts of our community, and introduce furry potential family members to every corner of our community.

Every day at the CASPCA we see how the abandoned, neglected, and homeless animals need us— but just as clearly, how we need them. Knowing the joy that they bring to the lives of those who will someday care for them makes every day a great day. As a leading No Kill community, keeping many cats and dogs housed, healthy, and fed until they find a loving family is an expensive undertaking. It requires tens of thousands of hours of work from dedicated staff and animal care volunteers. Thanks to the many generous contributions from supporters like you, the CASPCA has been able to thrive and expand its lifesaving and smile-bringing mission of creating and completing families. Without you, none of this would be possible.

In this report, we are excited to share our numbers, which reflect what a difference we made for the animals in our care in 2016.

A handwritten signature in black ink, reading "Suzanne Owen". The signature is fluid and cursive, with a large, stylized 'S' and 'O'.

Suzanne Owen
Board Chair

BOARD OF DIRECTORS

Suzanne Owen

CHAIR

Mark Sackson

VICE CHAIR

Lisa Ross Moorefield

SECRETARY

Kevin Stiffler

TREASURER

Gina Bayes

Jenn Corbey

Rebecca Tarkington Craig

Erin Davis, DVM

Ethel deNeveu

Tom Fitch

Ashley Matthews

Phil Shiflett

Frank Squillace

STAFF LEADERSHIP

Angie Gunter

EXECUTIVE DIRECTOR

Nicolette Del Muro

DIRECTOR OF OPERATIONS

Kristen Scheller, DVM

DIRECTOR OF VETERINARY
SERVICES

— “ —

*It didn't take
long for Cyd
and Maddie
to walk into
Charlie's life.*

— ” —



meet charlie & cyd



Charlie and his human mom, Cyd, found each other at the perfect time.

Cyd's dog at the time, Maddie, had just been diagnosed with cancer and they both needed new life in the home. When his owner had to move, Charlie was surrendered to the shelter along with five other dogs. It is hard on animals when they lose their owners, and Charlie had an especially difficult time. He did not know how to walk on a leash, and always hesitated to leave his kennel. The CASPCA staff brought Charlie up to an administrative office with the hope that some extra TLC and a quiet space would make him more comfortable. It didn't take long for Cyd and Maddie to walk into Charlie's life.

Today, Charlie is a healthy and happy 15-pound bundle of love, and enjoys anything that involves being with his family. "I don't know what I would do if Charlie wasn't in my life," says Cyd, who enjoys their walks together and appreciates having a reason to enjoy the outdoors with her buddy. Charlie can put a smile on anyone's face with his playful antics, which include tossing around cat toys, moving his doggie bed from room to room, and romping around with his human mom and canine siblings.

ABOUT US



Founded in 1955, (after unofficially operating out of the basements and garages of concerned citizens since the early 1900s), the Charlottesville-Albemarle SPCA has come a long way. In 1955, the CASPCA acquired eight acres of land with a chicken coop, which, with some conversion and remodeling, became the first animal shelter in the region. Over the next 40 years, the shelter building, never completely renovated, became a hazard. In the late 1990s, it no longer met state building code requirements and was on the verge of being shut down.

Planning for a new facility began in 2000. In 2004, after a community-wide capital

IN THE PAST DECADE

More than **31,000** animals adopted into loving homes.

More than **56,000** animals spayed/neutered to reduce overpopulation.

Over **6,300** lost pets reunited with their families.

Over **9,400** animals microchipped.

campaign, the CASPCA moved into its current facility. The current home is a 32,000-square-foot building on a six-acre campus, which houses one-third more animals than the former facility, and contains a veterinary surgical suite.

In 2006, less than two years after the move into the new facility, under the leadership of then-executive director Susanne Kogut, the CASPCA became a designated No Kill community, securing its status as a trailblazer in the animal-welfare community. The impressive designation was achieved by doubling the number of animals placed in foster care from the previous year, treating and finding homes for many sick and injured



dogs and cats as well as older, blind, or deaf animals or those with “special needs.”

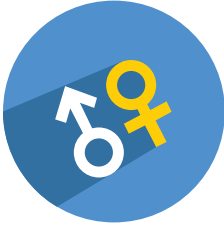
The CASPCA proudly celebrated 10 years of being a No Kill community in 2016. Looking into the future, we knew it was time to expand our lifesaving efforts to pets living outside of the shelter’s

walls. Our vision for a mobile unit became a reality thanks to a \$73,500 challenge grant from the Perry Foundation and our generous community of supporters.

The Compassionate Care-A-Van will enable the CASPCA to continue leading the way into the future of animal welfare. The state-of-the-art mobile unit allows us to save more pets’ lives, in and outside of our service area, through many facets such as providing accessible and affordable veterinary care to low-income pet owners; helping surrounding communities increase their live release rates by transferring in animals in danger of euthanasia; and showcasing adoptable shelter pets. The ability to transport and present adoptable pets in the Compassionate Care-A-Van will spread awareness of the many shelter services and programs at the CASPCA, in addition to reaching adopters who may not have otherwise visited the shelter.

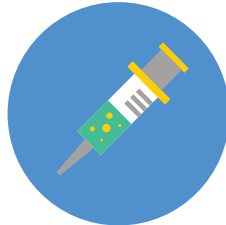
With the new Compassionate Care-A-Van, the CASPCA can visit the underserved areas of our region where pet owners have difficulty accessing and affording veterinary care, and provide wellness checkups, vaccinations, and pet care education. We will also provide animal transport to and from our clinic for spay/neuter surgeries, wound care, mass removals, grooming to remove mats, and dental procedures.

SERVICES



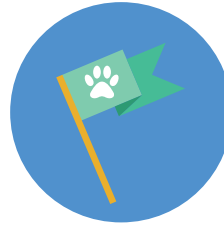
SPAY/NEUTER

Spaying and neutering your pets helps prevent additional unwanted litters in our community. Schedule your animal today.



RABIES VACCINATIONS

Prevent your pet from contracting this fatal disease. Clinics are held on the first Sunday of every month from 12-4PM.



SURRENDER YOUR PET

Before surrendering your pet, explore every other alternative first. Pets are a lifetime commitment.



LOST/FOUND

Reclaim a lost pet if it has strayed and found its way to us. Please call us as soon as you realize your pet is missing and file a lost animal report.



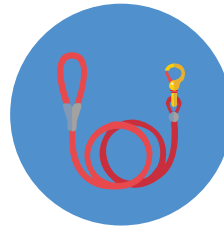
SUMMER CAMPS

Camps consist of animal-related activities, animal interactions, visits from special guests, fun animal-themed crafts, and more.



THERAPY TEAMS

Therapy teams brighten days at care facilities, nursing homes, and children's programs.



OBEDIENCE TRAINING

Using clicker training, our group classes teach skills to dogs and their people for real-life situations. Register online.



COMMUNITY CATS

We offer free spay/neuter services for community (feral) cats living in Albemarle County and the city of Charlottesville.

& OUTREACH



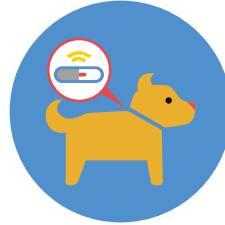
COMPASSIONATE CARE CLINICS

Clinics provide a wellness exam, pet-care education, rabies vaccines, and routine wellness care at reduced fees.



CITY/COUNTY LICENSES

We sell county and city dog licenses. Proof of a current rabies vaccination is all you need to bring with you.



MICROCHIP CLINICS

Reuniting lost pets with their owners is an important part of our mission. Clinics are held on the first Sunday of every month from 12-4PM.



CREMATION SERVICES

With compassionate hearts, the staff at the CASPCA will take your deceased companion and treat your pet with the utmost respect.



HUMANE EDUCATION

We teach principles of respect for all forms of life, and believe encouraging the spirit of kindness toward animals is the starting point for empathy in kids.



BIRTHDAY PARTIES

Let us make your birthday bash memorable with a shelter tour, fun games, and real "party animals."





2016 RESULTS & STATS

218,126

PET MEALS
SERVED

2,511

TIMES ANIMALS
ENTERED FOSTER CARE

121

ANIMALS SERVED DURING
COMPASSIONATE CARE CLINICS

140,000

WEBSITE
VISITORS

2,444

ANIMALS FOUND
LOVING HOMES

115

LIFESAVING SURGICAL
PROCEDURES

19,994

EMAIL
SUBSCRIBERS

1,488

CATS
ADOPTED

68

SMALL ANIMALS
ADOPTED

18,818

FACEBOOK
LIKES

888

DOGS
ADOPTED

4,510

PETS WERE SPAYED/
NEUTERED

688

NUMBER OF
FOSTER PARENTS

3,342

GENEROUS
DONORS

540

LOST PETS
WERE REUNITED

2,728

PETS WERE
MICROCHIPPED

310

PET THERAPY
VISITS





meet coven & james



Coven's owner, James, met her at the CASPCA when she was just a little kitten.

James was looking for a Siamese kitten to join his family and was stunned when he arrived for work at the CASPCA one day and there she was, waiting for him in a purple carrier. There was an immediate connection between the two, and James knew the small little kitten who fit perfectly in his hand was meant to be his. He immediately proclaimed that he wanted to adopt her and sent a picture of her to his family, stating, "I am bringing her home today!" James checked on her periodically throughout the day, falling more in love with her as the day progressed.

With the recent loss of his sister, James was left feeling vulnerable. Coven was just what he needed to help overcome his feelings of grief and sadness. Coven provided a healthy distraction, and brought a calming presence to the home that she shares with her siblings: a Quaker parrot named Champagne and a Biewer Yorkie named Porsche. James says, "Coven is a blessing in our lives; a true Godsend—she is kismet!" Today, Coven enjoys chasing Porsche around the house and watching the world go by while sitting on the windowsill. A great cuddle buddy, she brings James and his family joy every day.





— “ —

*Coven was
just what he
needed to help
overcome his
feelings of grief
and sadness.*

— ” —

We believe that encouraging the spirit of kindness toward animals can be the starting point for the development of empathy in youngsters. The CASPCA engages the next generation of animal lovers with our popular humane education programs, including camps, birthday parties, and educational tours and visits.

SUMMER, SPRING & WINTER CAMPS

In 2016, the CASPCA offered spring, summer, and winter camps for rising third through sixth-graders. During these week-long sessions, camp counselors and guest speakers taught students about the importance of treating animals with respect and compassion by engaging in crafts, educational activities, and interactions with shelter pets.

ART CAMP

This camp for at-risk youth helped campers learn empathy and compassion for animals, while giving them experience in team-building exercises and collaborative projects. Campers learned about animal welfare and created art for display at the CASPCA. This camp was made possible with support from the Bama Works Fund of Dave Matthews Band as well as other generous donors, allowing us to provide campers with free meals, transportation, and all the supplies needed to create a Virginia is for Animal Lovers mural.



41

**EDUCATIONAL VISITS &
TOURS HELD**

650

**CHILDREN ATTENDED
BIRTHDAY PARTIES**

96

**CHILDREN PARTICIPATED IN
A CASPCA CAMP**

COMMUNITY



The first Rummage sale to benefit the CASPCA animals took place in 1940 and raised \$40. For more than six decades, the six-week-long annual sales continued to grow in popularity, raising more and more funds needed for the lifesaving care of the CASPCA animals. The 2005 sale brought in more than \$200,000, and in 2007, a coalition of board members and staff opened the first brick-and-mortar SPCA Rummage Store on Preston Avenue. The 2016 move to the larger commercial space at 199 Zan Road in Seminole Shopping Center has allowed staff to accept more items and offers an expanded area for the sorting and organizing of donations. The new store offers ample space for the

popular Boutique and an improved book section. A larger shoe area allows footwear to be organized by size, and shoppers can enjoy the ease of finding plenty of parking spaces in the shopping center lot.

A new sales system was implemented, which allows items to be reduced on a monthly basis to ensure old items are moved, making room for new merchandise. In addition to shopping for treasures old and new, shoppers can visit adoptable felines in the bright and spacious Cat Room on-site!



Shop & Donate

Monday – Saturday: 10AM-6PM

Sunday 12PM-5PM

VOLUNTEERS



Here are just a few of the dedicated volunteers who are an integral part of the CASPCA family, assisting with everything from cleaning, socializing cats, and dog walking to greeting visitors, fundraising, and assisting at adoption events. Hundreds of animals receive a second chance, thanks to the love and compassion of our many foster families. Fosters offer animals nurturing and feeding when very young, socialization, a break from the shelter, training, and time to recover and heal after surgery.

& FOSTERS



20,942
VOLUNTEER
SERVICE HOURS

=

10
FULL-TIME
STAFF MEMBERS

— “ —

*I hadn't been
the only one
fostering! These
kittens fostered
me too.*

— ” —



meet matilda & kelley



Two years ago on Christmas Eve, Kelley's children surprised her with an adopted cat from our shelter.

Having just moved to the area, the family felt unsettled and Matilda quickly became the best part of their new home. Soon after settling in, Matilda snuck out of the house. Soon after settling in, though, Matilda snuck out of the house. Kelley was devastated and came to the CASPCA. She met with the front desk staff, who worked with her and helped her locate Matilda.

While at the shelter, Kelley learned of the foster program, and soon took home her first litter of bottle babies. These kittens required around-the-clock care, and bottle feeding every few hours. As a first-time foster mom, Kelley worked closely with the clinic staff to help understand the kittens' progress. She soon received another call from the foster team, asking for help with another litter of neonatal kittens.

Frank E. and Cardsy, the best of friends, are now residents with Matilda and Precious Pearl, the pup. Kelley can't imagine her life without the kittens, "I hadn't been the only one fostering! These kittens fostered me too. In those many months, I was reminded of how much I still have to offer, that my desire to nurture and love still has a place and value in this world, and 'doing small things with great love' should never, ever be underestimated."



MEET OUR STAFF



The CASPCA's talented and diverse group of over 60 employees all share the same passion, dedication, and commitment to helping the thousands of animals who walk through our doors each year. With over 20 different positions, each staff member works tirelessly as part of a team, all with the shared goal of improving the lives of animals.

Jobs range from caring for each animal's needs and finding them loving homes to working at the shelter's thrift store to organizing fundraisers that support the many lifesaving programs at the CASPCA.

Each person plays such an important role in serving our community's pets and organization's mission.

Working with animals is a dream job, but animal welfare is also a very challenging and emotional industry. Staff work long days; the work is hard and dirty; tears of joy and sadness are shed; but performing lifesaving work is one of the most rewarding aspects. Helping animals' wounds heal, both physically and emotionally, and seeing them run into the arms of their new adopters make us want to work that much harder.

COST OF CARE

COST OF
SPAY/NEUTER:

CATS \$50/DOGS \$65

DAILY COST OF CARE
FOR ONE HEALTHY
ANIMAL:

\$20

COST OF VET CARE
PER ANIMAL ON
ADMISSION:

\$40





meet lorena & sarah



When Lorena's family came to the CASPCA, they knew immediately that she was the one.

Lorena wasn't always up for socializing during her long stay at the shelter. As a diabetic cat, her daily insulin shots are a lifesaving necessity; however, they are not easy to administer. Shelter staff knew that someone with patience and experience in medicating felines would be what Lorena needed. After living at the CASPCA for more than a year, Lorena met the Critzer family. Lorena greeted them with lots of kitty licks and didn't shy away from receiving pets and scratches.

As the family's first pet, Lorena helps her human siblings learn the important lesson of what it means to be responsible caretakers. Lorena enjoys greeting her people when they get home by rolling onto her back and showing how comfortable she is in her new home. She keeps her human mom company when the kids are away and is always within arm's reach. Her mom relayed recently, "Lorena has brought love, laughter, and for me, peace. We all just adore her and couldn't be happier!"



— “ —

*Lorena helps
her human
siblings learn
the important
lesson of what
it means to be
responsible
caretakers.*

— ” —

SAVE STORIES

COST:
\$1,000



SPARKLE

CONDITION: Sparkle was transferred to the CASPCA from another local shelter, unable to treat her severe upper respiratory infection. The CASPCA is fortunate enough to have two veterinarians and a clinic on-site that always tries to aid other local shelters without the same resources. **TREATMENT:** Sparkle was started on treatment for an upper respiratory infection and moved to the CASPCA's low-stress URI ward. She improved a little, but continued to have thick nasal discharge. During a follow-up exam, a hole was discovered in her soft palate, which allowed food from her mouth to come in contact with her nasal cavity, creating a constant infection in her nose. She was placed under general anesthesia and the defect was repaired, greatly increasing her quality of life. **TODAY:** Sparkle is recovering from her recent surgery and will be available for adoption soon!

COST:
\$5,820



VINNIE

CONDITION: Vinnie was carried into the CASPCA by one of the local animal control officers, extremely dirty, full of fleas, and unable to walk. Our vet examined him, and x-rays revealed severe bruising on his abdomen, crepitus (air in an abnormal location) affecting his chest, a fractured right tibia, a fractured pelvis, a dislocation of his pelvis, and multiple fractured ribs. **TREATMENT:** Vinnie was sedated, bathed, bandaged, and put on strong pain medication. His fractured right rear limb was repaired with a bone plate. While recovering in foster care, he began to cough. X-rays revealed a diaphragmatic hernia—a hole in his diaphragm that allowed abdominal organs to enter the chest. The surgery was challenging, but he did very well and the day after surgery was wagging his tail! **TODAY:** Vinnie is happy and healthy in his new home with his beagle/chow mix brothers. They act as guides and protectors for him, often snuggling together.

COST:
\$4,635



MYRTLE

CONDITION: Myrtle came to the CASPCA anemic and severely matted after being abandoned in a foreclosed home. She was an older cat suffering from an upper respiratory infection, arthritis, and severe inflammation and infection in her mouth and ears. **TREATMENT:** Myrtle immediately started treatment and blood work was performed to ensure her liver and kidneys were functioning well. Her coat was sheared and she was put under general anesthesia for dental surgery. Afterwards, she was put into a foster home for recovery. **TODAY:** After a few months, Myrtle found a loving home and her adopter reported that she is doing great and is the sweetest girl. She relayed, "It's like she has lived with us since she was born. It makes us feel so happy that she is comfortable and loves it here just like we love having her here!"

COST:
\$4,750



JETHRO

CONDITION: Jethro arrived at the CASPCA unable to walk. He had severe injuries in both of his hind legs and his rear paws were badly damaged and infected. His right ankle joint was obliterated and his left hip joint was dislocated. Jethro was also morbidly obese.

TREATMENT: Jethro was taken to surgery to fix his left hip and both of his wounds were cleaned and bandaged. He required daily bandage changes under sedation. His left leg began to heal, but the injury to his ankle was so severe, amputation was considered. But a unique approach was utilized—a skin graft! His ankle began to heal, and four months after arriving at the CASPCA, he was able to leave the clinic and go into foster care for further recovery. Jethro taught us that we are capable of managing critical and long-term patients even in the busy, challenging, shelter environment.

TODAY: Jethro is doing well in his foster recovery home. He walks on all four legs for 10-15 minutes several times a day and is getting stronger. His foster family says that he is very affectionate and cuddly. We are optimistic that he will be available for adoption soon.

COST:
\$1,030



DOLORES

CONDITION: Sadly, Dolores was transferred to the CASPCA after her owner passed away. Her appearance was unique due to a large mass attached to her face, which had been present for a while. The cost and risk of having the surgery had deterred her owner from having the mass removed. **TREATMENT:** Dolores was taken to surgery to remove the mass. In addition, the mass was removed, her ears were thoroughly cleaned, and several mats were removed from her coat. After surgery, Dolores spent a week in the clinic for close observation. She healed quickly and was soon adopted. **TODAY:** Dolores has settled in with her new family quite comfortably. All of her fur has grown back and her purr is jet engine powerful! Despite being a senior citizen, she's still playful and frequently chases a small stuffed mouse toy around the house. She shares her home with fellow adoptee Alfred and sibling Odette, both senior kitties as well.

COST:
\$1,335



CHICKA

CONDITION: Chicka was extremely fearful when she first arrived at the CASPCA, and due to her distrustful behavior, was housed in the clinic's calmer environment. Dachshunds love to bury themselves, so she was always given lots of blankets to hide in. Multiple attempts were made to win her over by offering spoonfuls of peanut butter, and after a couple of days, the vets were able to perform a more thorough examination. **TREATMENT:** Chicka was uncomfortable when her stomach area was touched, and a small piece of string was noticed coming from her rear end. She was sedated and it was discovered that the string was present throughout her entire gastrointestinal tract! In order to remove the string, five incisions were made in her gastrointestinal tract: one in her stomach and four in her small intestines. It was a long surgery, but Chicka did very well. She was started on pain medications and began to become more friendly and interactive with staff. **TODAY:** Chicka is now in a loving home and her new family reports that she is happily settled in and still loves burying herself under blankets.



EVENTS



BOW-WOW-WALK

Many steps were taken to save lives during the third annual bow-WOW-walk on April 30th. The K-9 2.5K was a huge success, with \$60,000 raised to benefit the animals at the CASPCA—\$10,000 over the goal! Team Natural Pet Essentials led the pack with \$8,000 raised, and more than 450 walkers and their four-legged friends turned out to strut their stuff to support the life-saving care at the CASPCA.



CRITTER BALL

The 2016 Critter Ball on Friday, October 14th, was another huge success for the Charlottesville-Albemarle SPCA, raising more than \$230,000 in net proceeds to benefit the animals at the shelter! Terrific live and silent auctions featured exciting packages and key initiatives, including our Art Camp and Spay/Neuter appeals. Attendees also supported our Compassionate Care-A-Van, a mobile unit that will help underserved populations in need of pet care in our community. To top off the night, guests grooved to Motown performers Kustom Made.



— “ —

*Then one
fateful day...
Vicki found
Blue and Blue
found Vicki.*

— ” —





meet blue & vicki



With a heart-melting smile and expert snuggling skills, Blue charmed everyone he encountered.

Despite capturing the hearts of CASPCA staff and volunteers, the lovable dog Blue was in and out of foster homes for nearly a year. Although Blue was cared for and loved by staff and foster families, he struggled without a person to call his own. Then one fateful day, after months of searching for a new companion, Vicki found Blue and Blue found Vicki.

It was another adoptable dog who originally caught Vicki's eye on the CASPCA website and who led her to the shelter. Yet, as fate would have it, Vicki saw Blue, decided to take him for a walk, and immediately fell in love with him. Although Blue needed some time to adjust and learn the house rules, Vicki provided him with the structure he needed to be his most lovable self. Blue loves his treats and, thanks to his fondness of food, he's learned lots from his mom about listening. Vicki and Blue are a team. They enjoy walks around the neighborhood, practicing yoga, and watching movies together. "Blue has captured my heart and that of my boyfriend, neighbors, and family... He has been a joy to have as my fur baby."

? IS THE CASPCA AFFILIATED WITH ANY NATIONAL ANIMAL-WELFARE ORGANIZATIONS?

Like most local animal shelters, the CASPCA receives no ongoing funding from the ASPCA or the Humane Society of the United States. If you want to help the animals in your community, give to your local community shelter or animal-welfare group.

? WHAT IS THE CASPCA'S POLICY WHEN ACCEPTING PETS?

Our doors are wide open to dogs and cats from Albemarle County and the city of Charlottesville, regardless of age or health.

? THE CASPCA IS A NO KILL ORGANIZATION. WHAT DOES THAT MEAN?

We are committed to saving all healthy and treatable animals in our care, regardless of how long they've been with us. We are a progressive, solution-oriented, animal-welfare organization dedicated to saving lives.

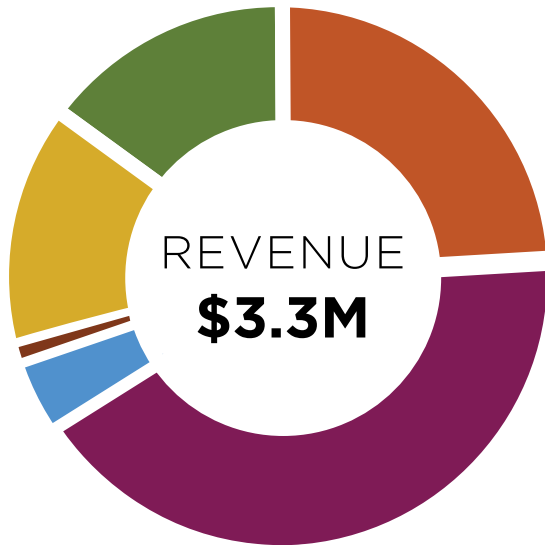
? WHAT IS THE CASPCA'S ANNUAL LIVE RELEASE RATE?

We collect and report our shelter statistics using a nationally recognized data matrix called the Asilomar Accords. We track and compare our progress through our Annual Live Release Rate, which is the rate of live outcomes for all cats and dogs that leave our care. In 2016, we were proud to achieve a Live Release Rate of 94 percent.

? IS THE CASPCA A POUND OR SPCA?

The CASPCA is defined by VA Code as a "private animal shelter" whose purpose is finding permanent adoptive homes for animals. We also serve as the contracted "public animal shelter" for Albemarle County and the city of Charlottesville to impound or shelter seized, stray, homeless, abandoned, unwanted, or surrendered animals. We are under contract and receive funding to serve as the city and county pound.

FISCAL



24%	City & County	\$808,842
42%	Donations/Public Support ...	\$1,377,966
4%	Investment Income	\$142,667
1%	Grant Income	\$42,500
14%	Products & Services	\$462,932
15%	Rummage Store	\$490,497
100%	TOTAL REVENUE	\$3,325,405

52%	Animal Care	\$1,762,081
25%	Vet Clinic	\$848,249
7%	Rummage Store	\$225,223
5%	Fundraising	\$166,429
11%	Administration	\$388,923
100%	TOTAL EXPENSES	\$3,390,905

BEQUESTS

\$269,091 included in total revenue
in donations & public support

PHILANTHROPY



The CASPCA relies on donation to purchase much needed equipment, hire top-notch staff, and provide crucial programs and services to the community. All the work we do would not be possible without the various forms of giving we receive. Ways you can give include donating to our Rummage Store, making a monthly recurring gift, giving in memory/honor of a pet or person, or even just offering a general contribution. You can also sponsor a pet, adopt a kennel, or purchase one of our memorial bricks.

Whichever way you have offered support in the past or choose to contribute in the future, we thank you and value your gift, as do the many animals helped every day at the CASPCA.

3,342

GENEROUS DONORS SUPPORTED
OUR ANIMALS IN 2016

LEGACY GIVING

One of the most crucial gift we receive is a legacy gift—a planned gift that costs donors nothing now but will provide essential support to the CASPCA and its programs for years to come. In 2016 alone, legacy gifts made up 20 percent of our total donations and were vital to our operations, enabling the highest standard of care for thousands of animals in need.

There are many ways you can ensure your legacy at the CASPCA. You can choose to name us in your will or to bequeath to us a portion of your estate. You can give in the form of stocks, bonds, or property, or you can arrange a gift annuity, a trust, or the transfer of unneeded life insurance. Please contact us today to learn more about these forms of giving.

ACKNOWLEDGMENTS

THANK YOU, PAWTNER

Virginia National Bank's ongoing support as a CASPCA "Pawtner" has enabled us to expand our reach in the community, funding key programs and helping us maintain our No Kill mission. Through the Pawtner Program, businesses and organizations support the lifesaving work at the CASPCA while being recognized as key leaders in our community. Pawtners receive special recognition throughout the year on our website, in our newsletters, and in signage at our facility, reaching thousands every year. Contact us today to find out more about how your business or organization can increase its visibility while helping thousands of animals in need throughout our community!

THANK YOU, PAWTNER

Eze Amos | Susan Kalergis
Miette Michie | Andrea Shirey



BAMA WORKS

The Bama Works Fund of Dave Matthews Band is administered by the Charlottesville Area Community Foundation, and has been a supporter of the CASPCA for many years. Established in 1999, the Bama Works Fund supports charitable programs primarily in the Charlottesville, VA, area but has also responded to a wide variety of needs both nationally and internationally. The fund has raised over \$40M and has made over 1,200 grants since its inception.



#ThanksToMaddie

MADDIE'S FUND

Charlottesville-Albemarle SPCA is a proud recipient of funding from Maddie's Fund® (www.maddiesfund.org), helping achieve a no-kill nation. #ThankstoMaddie®

Maddie's Fund® is a family foundation created in 1994 by Workday® co-founder Dave Duffield and his wife, Cheryl, who have endowed the Foundation with more than \$300 million. Since then, the Foundation has awarded more than \$208.9 million in grants toward increased community lifesaving, shelter medicine education, and pet adoptions across the U.S. The Duffields named Maddie's Fund after their Miniature Schnauzer Maddie, who always made them laugh and gave them much joy. Maddie was with Dave and Cheryl for 10 years and continues to inspire them today. Maddie's Fund is the fulfillment of a promise to an inspirational dog, investing its resources to create a no-kill nation where every dog and cat is guaranteed a healthy home or habitat. #ThanksToMaddie.



meet hannah & candace

When Candace first brought Hannah home, she was concerned that Hannah's past experience might make it difficult for her to connect.

Hannah, formerly Quinn, was the last of 51 dogs rescued from a hoarding situation. To help Hannah acclimate, her crate was placed in the kitchen with the door open. For two weeks, she made no noise and would rarely come into the room with Candace and her fiancé, Steven. One night, Candace was sitting in the living room when she heard a tiny yip. Hannah had barked! Candace recalls her first meeting with Hannah as kismet. Hannah was incredibly skittish but very sweet.

When Candace first held her at the shelter, Candace felt an overwhelming need to protect her and give her the home she deserved. Candace recalled thinking, "Even if she never opens up to us, at least she will be with a family who loves her." Hannah has come a long way in the past few months, and is now showing a sassy side! She loves to snuggle and is always right by her mom's side. Hannah has been a loving and very patient sister to her dog sibling, Dexter, who can be quite a handful. They frequently compete for Candace's lap. Hannah was the final piece Candace, Steven, and Dexter needed to make their family whole!



— “ —

*Candace felt an
overwhelming
need to protect
her and give
her the home
she deserved.*

— ” —

THANK YOU FOR YOUR SUPPORT!

ESTATES & BEQUESTS

Estate of Eleanor Lee Barnes
Estate of Joan Barry
Catherine Garvey Trust
Elizabeth W. Purcell
Estate of Mary Emily Keetch Vincent
Estate of Theodore R F Wright

\$25,000 & UP

Anonymous
Vicky Castegren
Becky & Jim Craig
Employees of the Commonwealth of Virginia Campaign
Perry Foundation, Inc.

\$10,000-\$24,999

ACAC Fitness & Wellness Centers
Anonymous
Batten Family Fund
BMW of Charlottesville/Crown Automotive
Jennifer & Brian Corbey
Jan & Michael Cabbage
Farkas Family Foundation
Grace D. Riggs Fund
Kathy Murphy & Bob Enslow
Petco Foundation
Red Light Management
Glenn Rust
Susan D. Wells Sargean
Thomas C. & Mary Ann Hays Family Charitable Trust
Virginia National Bank

\$5,000-\$9,999

Anonymous
Bama Works Fund of Dave Matthews Band
Community Endowment Fund through Charlottesville Area Community Foundation
Crossroads Animal Hospital
Crutchfield
Scheline & William Crutchfield
Darrell & King Investment Counsel
Earl D. & Marian N. Olson Fund
Freestyle
Ivy Gardens LLC
Maddie's Fund
Oakwood Foundation
Orange Tree Foundation
Perrigo Company Charitable Foundation
Carol Ann Tomlinson
Virginia Veterinary Specialists

\$1,000-\$4,999

Ancestry Pet Food
Andrew and Kelli Block Family Fund
The Animal Connection, Natural Pet Store
Animal Farm Foundation, Inc.
Animal Wellness Center
The Anna and Kirven Brantley Charitable Fund
Anonymous
Arnold F. Baggins Foundation
Megan Bailey
Rhea & John Baldino

The Bane Foundation
Becky Barlow
Nancy & David Bass
Angela & Steve Batten
Ruthe Battestin
Carol Bauer
Gina & Ronnie Bayes
Helga Bennett
Carolyn & Martin Betts
Katherine M. Bevacqua
Carmen & Alan Bewley
Mary & Nelson Bickers
Lauren & Landon Birkhead
Janet & Gene Bolla
Cynthia Bowers
Bernard T. Bress
Jackson A. & Jenny T. Brown
C. Neil & Carolyn S. Norgren Foundation
Cavalier Produce
The Charles Fund, Inc.
Gabriela & Stuart Chase
Chevron Matching Employee Funds
Julie Coiner
Lori Connolly
County of Albemarle
Mary Laub Cowan
Cynthia Tremblay Foundation, Inc.
Erin Davis & Chris Coffing
Cheryl Anne DeAngelis
Delta Chapter of Alpha Tau Omega Fraternity
Ethel & Larry deNeveu
Dorothea D. Nelson Charitable Lead
Annuity Trust
Douglas D. & Elaine M. Hadden Drysdale Fund
Marilynne & John Eklund
Judith & Michael Ely
Steven Epstein & Cary A. Brown

Janet & J. Gray
Ferguson
Tom Fitch
Phillip Flavin
Flossie aka Floss the Boss
Elaine Fogliani & Doug Ponton
Kathryn Michelle & Hans Foss
Agnes M. Fotta
Carole & Keith Frazee
Elizabeth French
Brian J. Gallagher
Claire W. Gargalli
Georgetown Veterinary Hospital, Inc.
Kendall Giler
Angie Gunter
Hantzmon Wiebel, LLP
Harry A. Wright's Inc.
Christin & Adam Healey
Martha & Harper Hellems
Richard & Dianne Hendricks
Elizabeth Hyatt
The J&E Berkley Foundation
Judy & James Jaeger
Bill & "Pooh" Johnson
Connie & Jason Kapp
Pat & Jerry Kelley
Emily W. Kelly
Barbara & Brian Kennedy
Daria Kiselica
Sarah & Joseph Krenn
Kroger
Claudine Kundrun
Claudia & Rich Lawson
Susan & Thomas Likowski
Moir MacAvoy
Kelley MacDougall & Michael Pausic
Dudley Macfarlane
Madwoman Project
Mary Ann & Raymond Mancini

Manning Family Foundation
Shannon & Ryan McCall
McDonald's
Jenny Mead
Barbara Millar & Peter Thompson
Erica & Jim Millner
Monticello Animal Hospital
Lisa Ross & Robert Moorefield
Elizabeth & Gregory Morris
Jennifer Hays Morris
Natural Pet Essentials
Jen & Shane Nelson
Marilee & Paul Newman
Oak Hill Fund
Leslie & Nimmo Olsakovsky
Suzanne & Conan Owen
Pampered Pets
Pedigree Foundation
Judy & Charles Perkins, III
Pet Food Discounters
Joanne M. Phillips
Joyce & Richard Price
Monica & Michael Prichard
Rhonda E. Quagliana & William Barkley
Quantitative Investment Management Fund
Renaissance Charitable Foundation, Inc.
Rick & Susan Goings Foundation
Joyce Roberts
Sally S. Rogers
Demi Runkle
S. L. Williamson Company, Inc.
Liza & Mark Sackson
Karen Reid Sansom

Renee Savage & Glenn
Doggett
Elizabeth & James
Shannon
Patrick Sheehan
Ann & Phil Shiflett
Sleepy Dog Studio
James & Vicki Snead
Kimberly Snyder
Standish Family
Foundation Fund
Stephen K. Stearns
Peter Stoudt & Alice
Handy
Mrs. Virginia Sullivan
Sumner Gerard
Foundation
Marion & David
Szvedo
Claire M. Tieder
ting
Tony Fogliani Memorial
Golf Tournament
Will van der Linde
Vaughan W. Brown
Family Foundation
Malathi Veeraraghavan
& Shrikant
Ramamurthy
Joann & Mac Walker,
Jr.
Walmart Foundation
Mary Walter & George
Yin
Alison & Bernard Webb
Ceil & Kenneth
Wheeler, Jr.
Whitewoods Charitable
Foundation
Whitney & Anne Stone
Foundation
Anne & Tom Wild
William M. Camp
Foundation
Loring Woodriff
Catherine Wray &
Timothy Snider
Wrightson Ramsing
Foundation

\$250-\$999

AARP - Charlottesville
Chapter #192
Susan & David
Albaugh
Dallas A. Allen
Kathy & Brandt Allen
Chris, Becky &
Caroline
Allison
Catherine Amante
AmazonSmile.Org
Central
Nancy & John
Anderson
Mary & Warren
Andrews
Anonymous
Patricia & William
Apperson, Jr.
Sanja Arandjelovic
Donna Arehart & Gary
Chovan
Marilyn & F. Michael
Ashby
Autumn Trails Vet
Center
Gerald L & Robin D.
Baliles
Robert Baney
Cyrus Barger
Linda & Richard Barr
Maurice & Karen C.
Barros
Barry W. Battle
Rebecca Batton
Susan Bauer-Wu
Kim & John Beard
Mona W. Beard
Lea & Paul Becker
Rosemary & John
Beckett
James Beddow
Jesse Bejar
Mariana Bell &
Jonathan Baird
Benevity Community
Impact Fund
Patty & George
Benford
Kathryn Bettis
Julie Bibb

Margaret Bishop
Blue Ridge ESOP
Associates
Lori Bluni
Heather Boe
Anna Boeschstein
Rene Bond
Katherine Ann Bowles
Rebecca Bowyer
Susan & Thomas Brady
Helen M. Brite
Jayne Brittle & James
Jokl
Elaine & L. Scott
Brown
Faye M. Brown
Janice & Thom Brown
Sumner Brown & Herbert
Beskin
Pete & Florence Bruce
Donna & Michael
Bruggeman
Barbara Bruner
Renate G. Bruns
Alice & Thomas
Buchanan
Craig & Tracy Burpee
Thomas A. Caldwell
June & James Campbell
Canine Adventure
Carol & Jack Weber Fund
Carmen & Thomas
Carver
Bevin & Vito Cetta
Jessie Chapman
Charlottesville Pediatric
Dentistry
Charlottesville Tom Sox
Children of Benjamin H.
Word, Jr., M.D.
Ulla M. Chunn
Leone L. Ciporin
Rosa Collins
Steven L. Combs
Jessica Connelly &
James Morris
Cynthia & William Cooke
Lee & Brian Cope
Corporate Executive
Board Matching
Program
Kari & Kent Couling

Meghan Crider
Karen & Ben
D'Alessandro
Sandra & Alfonso Damico
Dammann Fund, Inc.
Betsy Daniel
Josh Daniel
David E. Post Family
Foundation
Ginny T. Dean
Barbara Deily
Deborah & Michael Del
Colliano
Donna S. Dempsey
Kate deNeveu & David
Murray
Dan & Rosetta
Dickerson
D. N. Dillon
The Dogg House
Ann & James Donovan
Scott & Sharon
Donovan
Heather C. Dow
Douglas & Sarah
duPont
Kathy & Kenneth
Eades
Peter Easter
Beth Eck
Barbara Elias
Elizabeth Johnston
Charitable Fund
Kimberly & Robert
Emery
Camilo Estrada
Eventbrite
Jeffrey B. Ferrill
Louise A. Finger
Peter Fink
Christine Fleckles &
Edwin Rushia
Wendy Flynn
Fork Union Animal
Clinic
Kay & Jeffrey Fracher
Cassandra L. Fraser
Nancy Fraser
Maggie Frederici
Fried Companies, Inc.
Sue & Frank Friedman

Frost Montessori
School
Barbara J. Frost
Joan & Donald Fry
Elizabeth Fuller
Flower Gale
Terry & Ted Gaudette
GE Foundation
Amanda Gee-Taylor
Andrea Gibson
Katharine & Alexander
Gilliam
Andrea Owen Gilmer
Nancy Goldstein
Patricia Gordon
Janet Gorman
Susan & Clyde
Gouldman
Terry & Andy Graff
Catherine Clay Greene
Dedrea Greer
Jane & Bruce Greyson
Chuck & Sue Tice
Grossmann
Leanne M. Grove
Lawrence A. Groves
Carolyn & David Grow
Kim Guenther & Ellen
Braun
Andrew Haines
Susan K. Hall
Wayne A. Hall
Carol & James Hallett
Sarah Hamfeldt
Bonita & John Hanks
Jeff & Alissa Hansen
Robert & Molly Hardie
Diane Harner
The Harrell Family
Fund
Melissa & John
Harrison, III
Anna Jane Hayes
Dr. & Mrs. James W.
Hayes
Marina M. Heiss
Barbara & Michael
Higgins
Judy & David Hodge
Sandra & Robert
Hodge

THANK YOU FOR YOUR SUPPORT

Brenda Fishel
Hodgson & Daniel
Hodgson
Debra & Jeff Holloway
Hoo's BBQ
Anne Hooff
Connie Horan
Hot Yoga
Charlottesville
Mr. & Mrs. Kal W.
Howard
Alice & Walter Hoyt
Betty & Fred Hudson
Hayes & Jessica
Humphreys
Gregory Hunt
A.H. Huntington, III
Suzanne Ibbeken
Lindsay Ideson
Independent Order of
Odd Fellows
Ingleside Training
Center, Ltd.
Danielle Ivanova
Jack Brown's Beer &
Burger Joint
John Jackson
Timothy Jana
Brenda Jarrell & James
Call
Kathryn Jarvis &
Gregory Propp
Joan T. Jay
Jeans for Generosity
Amy Jeffrey
Betty W. Jennings
Mary Helen Jessup
Susan & Michael
Johns
Diane L. Johnson
Emilie Johnson
Holly A. Johnson
Madelyn & James
Jones
R. Scott Jones &
Christine Stacy
Sally & Zane Jones
Troy & Margo Jones
Joe Kalkstein
Lori M. Kaufman
Kimberly Kavanagh

James G. Kavanaugh,
Jr.
James & Sharon Kelley
Mary Anne Kelly
Julie Kelsey
Mr. & Mrs. T. Kelsey
Mr. & Mrs. J.A. Kessler
Jr.
Eleanor & Joseph Kett
Kilwins
Cecilia J. Kimata
Joan S. Kindig
The Kingfisher
Foundation
Debbie Kirby
Everett L. Kirby
Beatrice Kirtley
Ani-ta & Kenneth Kite
Susanna Klosko
Jason Knickmeyer
Eva L. Knight
Keith & Nancy Knoell
Wanda & Anil Kochhar
Bob Koeze
Cathy & Chris Kramer
Robert A. Kuemmerling
Lake Family
Hope Lally
Rebecca & Bruce
Lanahan
Helen & Robert Landel
Josh Laseter
Sheila & Edgar Lawson
Ann Leake
Robin & Chuck Lebo
Robert Lenahan
Cordelia S. Lenz
J. C. Leonard
Jackie Lichtman &
Russ Linden
George W. Logan
Allyson C. Louthan
Denise Lunsford &
Richard Brewer
Joyce MacDonald
B. Gail Macik
Pamela Margaux &
Claude Thibaut
Marilyn & John
Marshall
Ryan Martin

Mason Insurance
Agency, Inc
Paul Massey
Masters Auto Body, Inc
McCann Family Fund
Mary & Robert McIver
Richard M. McKinnon
M.H. McLaughlin
Amy McLeskey
Brian Paul Menard
Teresa & H. Otey
Meriwether
Merkle
Sharon Meth &
Nicholas Brandt
Miette & George
Michie
Mid-Atlantic Bath
Solutions
Billie Ann Midthum
Amy Mikeska & Adam
Soroka
Carrie Miller & Mr. John
Joyce
Emily Privette Miller &
Matt Miller
Nancy B. Miner
Carol H. Minetree
Ron Mittelman
Andrew Molesy
Tanya & Charlie Monk
Montague Miller & Co.
Real Estate
Mary D. Moon
Dahne & Chip Morgan
Lisa & Donald Morin
Susan B. Morris
Michelle Moshier
Jeff & Ellen Moyers
Courtney Mudd
Murray Elementary
School
Ann & Carter Myers
Manfred Nettek
Network For Good
Roberta & William
Nixon
Bobby & Karen Nolan
Wallace & Donna
Nunley

Nunley-Satira Family
Fund
Amy & Scott Nunnally
Debbie O'Brien
Robert O'Connell
Steven Olson
Courtney Orebaugh
Chris & Gary Owens
Shashank Parekh
Kay & Davis Parker
Debra & Glenn
Parsons
Anne Patton
Pawprints Boutique
Jane & Robert Paxton
Shelley & George
Payne
Susan & Lewis Payne
Judith & Mac Peatross
The Pet Palz of
Greenwich
David Peterson
PetSmart Charities, Inc
Donna & Phillip Pfeifer
Courtney & Eric Pfister
Thomas & Elizabeth
Pitt
Carrie L. Pledger
Sarah Plummer
Vernon M. Powell, Jr.
Carol & Andrew Price
Raising Canes Chicken
Fingers
Mary Anne Irene
Randles
Deborah & Tayloe
Read
Greg & Laurie Redfern
Barbara J. Reid
Relay Foods
Peter Rhett
Ryan Rhodes
Christine & Jeffrey
Riley
Elizabeth H. Roberts
Heather Romberger
Janice & Victor
Rosenberg
Carolyn & John
Rosenblum
Blanka Rosenstiel

Patricia Ross
Deborah & David Rowe
John & Karen
Rowlinsong
Phyllis & John Savides
Gertrude Scherman
Allison & Tom
Schildwachter
Pete Schmidt
Elizabeth Scott
Robert H. Senechal
Richard P. Shannon
Margaret & Matthew
Shapiro
Rachel & Andy
Shelden
Vaden & Ginny Shields
Michael Skrutskie
Allison & John
Sleeman
Gracie & Craig Smith
Louise Smith
Nancy & Richard Smith
Anne Snyder
Ray Sotelo
Bobbie Spellman
St. Anne's Belfield
School
St. John, Bowling,
Lawrence &
Quagliana, LLP
State Farm Companies
Foundation
Viktoria & Douglas
Steel
Jodie Stevens
Andrea Stiernstrand
Stillfield Fund
Sue & Charles Stoke
Virginia Stokes
Erika Struble
Don Sundgren
Jackie & Don Sutton
Richard & Cecile
Swenson
Kerri Taylor
Ellen Teplitzky
Anne B. Ternes
Evan Terrell
Susan J. Thomas

Elsie & Mac
Thompson, Jr.
Linda & Robert
Thomson
Three Notch'd Brewing
Co
TIAA Charitable
Rebecca & Leon Tilley
Torey M. Todd
Jane R. Tolleson
Marsha Trimble & Kent
Olson
Sally Trude
Sally Tucker & William
Cocke
Rebecca Turner
Sarah E. Turner
Linda K. Underwood
United Way - Thomas
Jefferson Area
UVA Department of
Otolaryngology
Head & Neck
Surgery
UVA Health Physicians
Group
Delores E. Van
Beth & Rich Van Hook
Anne & Tony
Vanderwarker
Michael & Heather
Vanderweide
Fannie Mae Rankin
Vinci & Umberto Vinci
Virginia Federation of
Humane Societies
Virginia Foot & Ankle
Surgical Associates
Eleanor G. Voldrich
Chris VonFrieling
Alison & Daniel Walden
Anissa & Bill Walker
Tina Walker-Brinson
Christy & Brian
Wamhoff
Jeff Ward
Nancy & Kevin Watkins
Whitney Watson
Bobbie & Sam Wells
Dolores Wells
Kathy & Mike Wesson
The Whiskey Jar

Judith White & Samuel
Green
Nancy Whitman &
Robert Campbell
Lucy & Ben Whitmer
Duncan M. Whittome
Jane & Robert
Whitworth
The Wilcox Family
Andrea & Philip
Williams
Lynn & Tom Williams
Blair K. Williamson
John & Jean Wood
Sharon & Ron
Wormser
Howard Wright
Denise & Stephen
Yetzer
Laura Yin
Curtis D. Yohe
Connie & Christopher
Zazakos, Jr.
Hadley Zeavin
Fran Zimmel

\$100-\$249

Diana Abbott
Bill & Carolyn
Achenbach
Allan, Peggy, & Ryan
Thomas & Elizabeth
Allan
Denise Allensworth
Christine Allison &
Robert Knight
Patricia & Joseph
Alwardt
In Honor of Catherine
Amante (Cathy)
Debra & Philip
Ambrosini
Linda & Mike Amos
Megan Amundson &
Franklin Ray
Memet Anday
Alan E. Anderson
Dale Anderson
Margaret Anderson
Vicki M. Andreae
Anonymous
Lynn Ann Appleby

Al Aqualino
Robert & Elizabeth
Aronson
Thomas Baber
Norma J. Bailey
Reed Bailey
E. Gray Baird
Marianne & Calvin
Baker
Chloe Ball
Barbara Ballantyne
Winn & Rod Ballard
Lionel Balmforth
Bankers Insurance,
LLC
Robert & Darlene
Barber
Ruth Barclay
Mary L. Barker
Donna & George
Barlow
Elsa & Thomas Barnett
Ed Baron
Mauree & Rob Barrett
Lori Baruch
Gail Bashore
Matthew J. Bassignani
& Alan Higgins
Jervy & Tryon Bauer,
Jr.
Nancy & Dan Bauer
Kristina Baum
Angela Bazarre
Kristine & John Bean
Karen & Kenny Beasley
Carol & Hillis Beck
Michael Bednar
Brenda & David Beech
Richard Behr
Rodney & Sherryl
Behrens
Ruth & Malcolm Bell, III
Joseph Bellacera
Donna & Lee Bensey
Ida & Brett Berkobein
Janice H. Bernhard
Danielle Gay Berrey
Gary Berry
Stephanie Bertolucci
Patricia Miller Beswick
Nicole & Earle Betts
Bryan Bickers

Jane & Rodney
Biltonen
Phyllis J. Binder
Linda M. Birch
Jodi Blaylock
Rose Marie & Ralph
Bledsoe
Blue Ridge Equine
Clinic
David & Catherine
Boardman
Sally C. Booker-James
Jo Ann Arcieri-
Bostwick & Charles
Bostwick
Suzanne G. Bovenizer
Dek & Connie Bowen
Barbara Ann Boyce
Robert and Karen J.
Boyle
Daniel Bracey
Alice & Donald Bradley
Mindy Branch
David Brear
Melanie & Doug Brede
Sue & William Breit
Norman Brenbridge
Ella & Robert Bretz
Bonnie & Dick Brewer
Jackie Bright & Justin
Ross
Victor Bristow
Roxanne & Ron
Broadbent
Janis Chamberlain
Brooks
Brown Exterminating
Company
Melinda & Richard
Brown
Jacqueline Brownfield
John B. Browning
Tim Bruce
Victoria & Peter
Brunjes
Kelly & Eric Bruton
Gina Bull
Susan & Thomas
Bunting
Elizabeth Burdash
Robin Burke
Lucy R. Burnette

James Burnley
Kay & Pat Butterfield
Nancy A. Butters
Britony Buxton
Kathy & David Byars
Barbara Byerly
Wendy K. Caldwell
David & Gerry
Callaghan
Edward Campbell
Etta M. Campbell
Mary Campbell
Kate Canterbury &
Brian Fitzgerald
Angela Canterini
Robert Cantrell
Gerard Capone
Linda & Frank Cardella
Francis & Jilann Carey
Susan Carkeek
Susan Carl
Finis Carrall
Hope D. Carson
David C Carter
Sara Cary
Meredith Cary-
Morrisette
Joanne & Terry Casey
Esther Lynn Cash
Caspari
Patricia Cass
Brian Castor
Ellen Cathy
Elizabeth G. Cauthen
CFA Institute
Multimedia Publishing
Department
Charles D. Chadwick,
Jr.
Sara & Bill Chambers
Kara Chandeysson
Carol L. Chandross
Charlee Channing &
Brian W. Chase
Maria & Robert Chapel
Charlotte Chapman
Charlottesville
Dogwood Festival
Ann Charlton
Phil & Jeanne Chase
Ming-Jer Chen
Marcia & Jim Childress

THANK YOU FOR YOUR SUPPORT

M. A. Chiulli
Maureen Moore Clark
Inge Clausen
Patricia A. Clifton
Brian Coffing
Beck Cohen
Bobbie Cohen
Deborah Cohn &
Charlotte Patterson
Irene & Kenny
Coleman
Christina & Douglas
Colley
Claire Colley
Katie Collins
Benjamin Combs
Greg Compher
Congregation Beth
Israel Religious
School
Timothy & Corinne
Conlon
Glen Conrad
Eileen & Robert Conroy
Gwyn & Brian P.
Conway
Dora Conway
Caroline Lenox Cook
Linda Cook
Patricia A. Cook
Cheryl K. Cooper
Linda Cornick
Charles and Jackie
Cottrell
Herbert Cottrill, Jr.
Sandra Council
Cousin
Jamie Covell
Ellen Craig
James E. Craig, Jr.
Joyce Craig
Elizabeth M. Cranmer
Virginia Craven
Patricia Crawford
Janice Creasy
Faye Creighton
Adele & Carl Creutz
Kay Cross
Michael & Kathryn
Cross

Patricia & Thomas
Cross
Betty & Dale
Crutchfield
Lori Cwalina
Janice & William
Dalton
Patricia Ellis Dangelo
Patricia M. Daniele
Ellen Daniels
Harry Dannals
Audrey Ann Dannenberg
Darden School of
Business
Karen G. Davenport
Hamilton Davis
Kim Davis
Lee Davis
Indigo Day
Francesca & Eduard
de Lange
Maddy & John Deal
Phyllis & Russell Deane
June & Gerrit Degraaf
Dan DeLong
Laurel Dent
Mark Dest
Joseph DeVincensis
Mr. & Mrs. Diamond-
Jones
Alexandra DiGuardo
Rodney S. Dillman
N.D. Dillon
Betty & Ed Dinwiddie
Leslie Disharoon
Janet Dix
Susan Donnell
Ian Doran
Angela & Chad Dotson
Bernice & Andrew
Drapopoli
Diana Drake
Kira & Conrad Drennon
Barbara & Roger
Dudley
Tom Dudley
Dulaney, Lauer &
Thomas, LLP
Susan & Tom Dungan
Ernest D. Dunn

Leslie Durr & Mark
Fletcher
Phyllis & Alvin Dwier
Sue Ellis Dyar
Donna & Donald Eddy
Edgemont Farm, LLC
Melvin "Raindrop"
Edmonson
Sherry & Earnest
Edwards
Lawrence Eicher
Owen Eichfeld
Shirley & Bob Elliott
John & Betty Elliton
Mark J. Elson
Terry & Kenneth
Elzinga
Ellen English
Mimi Ensminger
Louise Epstein &
Stephen Marzen
Ann A. Ergler
Richard Ergler
Deborah L. Erickson
Denise E. Esposito
Tom Estes
Deborah Evering
Janet & Bern Ewert
Expertise Painting, Inc.
Ann B. Faris
Anne Marie Farrar
Katherine & Paul Farris
FastFrame
Carol Faust
Ruth E. Ferguson
Jim & Betsy Fernald
Betsy Ferronato
Jennifer & John Fetsko
Fidelity Charitable Gift
Fund
Sara Fishback
Seamane Flanagan &
Rob Gowen
Mickie Flanigan
Julie & John Flevarakis
Cecil R. Floyd, Jr., CPA
PC
Mason & Richard Fogg
Patricia Foley
Mary Fontenot

Jean & Ed Fording
Bob & Lisa Forsyth
Mary Jean & Donald
Foss
Foundations Child
Development Center
Megan Francis-Ogden
Amy & Harry Franze
Adam Frazier
Jill Fredrikson
Free Union Country
School
Janis & James Freeland
Marsha & John Frick, Jr.
Charles Frieden
Charles Friedman
Tara & Steven Friedman
Friends of the family
Sangitha & Rod Fritts
Julie & Bill Fudala
William Fulton, Jr.
Shirley A. Gallagher
Lauren M. Gallaspy
David & Michael Gallik
Kristina Garcia & Roy
Wade, Jr.
Sally M. Garland
Marjorie Garmey &
Melinda Baumann
Paula & David Garrett
Jean Gary
Laura Gasparini
Gaston & Wyatt
Nancy K. Gercke
Kristina & Anthony
Getter
Florence Geyer
Struthers & Fred
Gignoux
Carol A. Gilchrist
Margaret Gilliland &
Michael Pegan
Grace & Theo Giras
Global Impact
Kurt Gloeckner
Godfrey Property
Management, Inc.
Janie & Ron Goldberg
Stephanie Golden
Tricia & Michael
Golden

Diana Goldman
Karen & Neal Goodloe
Marvin & Brenda Gose
Betty L. Goss
Margaret Gossweiler
Robert & Anne
Gossweiler
Gerald & Audrey Gottlieb
Grand Piano & Furniture
Company
Benevolence Fund
Richard Grandage
Marie Elena & Michaux
Grant
Antoinette & William
Gray
Lisa Graziano
Susan Greene & Larry
Stopper
Virginia Greene
Matt Greenspan
Caroline & John Griffin
Karen Grimes
William Grindle
Annie Groeber
Allen Groves
Andrea Gruber
Summer & Matthew
Gruber
Carmi Gutherz
Kevin Haag
Matthew Haas
Martha Haertig
Mary & David Haglund
Deborah S. Hall
Jessica Hall
Amanda Hallstead
Robert Hamfeldt
Julia Hanks
Dr. & Mrs. George
Hanna
Ann Hardy
Wayne Harlow
Rachel Harmon
Jerry & Melissa
Harrelson
Lelia & Frank
Harrington
Buddy Harris
Mark & Mary Ann
Harris

Delia Harrison	Dick & Mary Howard	Christine S. Kennedy	Linda Leshowitz & Tim	Marguerite E. Matter
Nancy Harrison	Jon Howard	Jane Kerewich	Brazil	Paige Mattson
Barbara Hartless & Joe	Penny & Tom Howard	Tanya Kerr	Sharon & Douglas	Joanne May
Sutherland	and Georgia	Kathy Kessler	Leslie	Margaret Mayer
Wendy & Edward Harvey	Rodenhauser	Paula Kettlewell	Yvonne Leveque	Doris & Paul Mays
Jeremiah & Jennifer	Richard & Susan	Art & Sue Keyser	Vera Lightfoot	Nancy McAdams
Hasher	Howard-Smith	Linda Keyser	John & Deborah	Emily & Brian McCahill
Barbara Haskins	Elizabeth Howell &	George & Katherine	Lindbergh	Jan & Larry McCarthy
Louise & William Hay	Rick Scotson	Kidder	Carol Lindsey	Louise McConnell
Pat Hayman	Kristina Howell	Ruth & Robert Kidney	Rebecca Lipchak	Susan McConnell
HCPS Department of	Reese & Geri Howell	Carrie Kimbrough	Deborah & Douglas	Jeanne M. McCusker
Technology	Jeanne & Albert Huber	Anne King	Little	Deborah McDaniel
Frederick & Meriflo	Paul Humbert	Lynn Kirby	Niall Little	Camp McElveen
Heblich, Jr.	Linda & Don Hunt	Vernon & Mary Kirby	Ryan Llewellyn	Amanda & Rob
Peter Hedlund	Patrick Hunt	Ingrid Kliethermes	Donna Lloyd	McEwen
Stephen Heim	Grace A. Hutcheson	Michelle Knudsen	Charles & Stella Loftin	Catherine & Eugene
Achsa E. Henderson	Juliana Illari	Dave Koehn & Ashley	Gay & Kenneth Loftin	McGahren
Lily Henderson	Andrea Ireland	Matthews	Kathleen & Patrick	Keith & Kimberly
Mary Jo Dollins	Darius Jahann	Erwin M. Koeritz	Long	McGinnis
Hendricks	Jennifer & Rob	Jamie Kollar	Samuel & Jane Long	Karen McGlathery
Loren Hendrickson	Jamison	Laura Kollar	Jennifer M. Longbrake	Kathy & Sam
Margery C. Henneman	Kate Jensen	Deborah & Robert Kozura	Barbara Loveland	McKelvey
& Bosley Crowther, III	Marianne & Arnold	Sherry Kraft	Gayle & Bryan	Lois McKenzie
Jevera Hennessey	Jensen	Henry & Alexandra	Lovetere	Susan Hale Mckibbin
Morela Hernandez	Lucy Welbourn	Kucinska	Stephanie Lowenhaupt	Terri & Robert
Hess Corporation,	Johnson	Prakash & Mahmooda	Henry & Pat Lukas	McKnight
Marketing	Bruce Jolly	Kulkarni	Vicki Lutes	Mary Ann B. McMahon
Departments	Anita Jones & Bill Wulf	David Kutas	Jane M. Lynch	Sheila McMillen
Sara Hess	Judy Savage Jones	Howard Kutchai	Lynne Brubaker	Carrie & Robert
Stephanie & Charles	Susan Jones	Richard & Jane Lacasse	Photography, Inc.	McNamara
Hess	JP Morgan Chase	Denise E. Lacour	Sandy MacGregor	Pauline & George
Lisa & Dan Heuchert	Foundation	L.C. Landry	George & Sybil	Meehan
Terry & Jack Hickey	JustGive	Claiborne Lange	Mahanes	B J Meeks
Roxy Hicks	Lucia Kaestner	Kim A. Langford	Gary Mahoney	Anne Megibow
Thomas Scott Hicks	Joan & John Kammire	Frances Lapan	Hillary Maitland	David M. Mehringer
Diane Hillman	Marsha & Jim Kannry	John Lauer	Richard Maney	Sandra & Hunter
Wendy & Jay Hirsh	Heather Karp	Gregory Lavin	Andria Manka	Melton, Jr.
Frederick & Mary Hitz	Angie & Stan Kask	Adria LaViolette	Valerie Mann	Lynette & Izzy
Bruce Hobbs, Jr.	Katherine Hatton &	Joyce & James Lawrence	April Manning	Menchero
Lysa Hodgson	Richard Bilotti Fund	Mary Ellen & Jon	Anne & Brooks	Frank Mercadante
Susan & Robert	Kathleen E. Howard	Leachtenauer	Marshall	Meredith Mercer
Hodous	Revocable Trust	Karin League	Michael & Donna	Meriweather Mowing
Linda C. Hogan	Minnie Kay	Sheri Laubach	Marshall	Service
Carol & David Hogg	James & Jane Keathley	Katherine Southwell	April Martin	Carol Merrill
The Holland Family	Dean Kedes	Lee	Beverly Martin	Elizabeth & Richard
Alice & Paul Holtz	Richard & Johanna	Tom & Martha	Graciela & Michael	Merrill
Virginia & Robert Holub	Keeling	Leinbach	Martin	Connie Messemer
Home Instead Senior	Michele & Kenneth	Shelbia & Alan Lengel	Joan & Ramsey Martin	Shan & Mark
Care	Kellermann	Macy & Michael Lenox	Judith Marymor	Meulenbergh
Barry & Sheryl	Brigitte Kelly	Debbie & West	Leigh Mason	Jennifer & Brendan
Horowitz	Cynthia Kelly	Lescanec	Jennifer & Rick	Meyer
Ellen Houle	Lucie S. Kelly		Matheny	Derry Miller-Meyung

THANK YOU FOR YOUR SUPPORT

Mickey
Rachel Lloyd Miller &
Jim Miller
Dixie Mills
Clara Mincer
Mincer's University
of VA
Imprinted Sportswear
Helen & Henry Minich
Jennie Sue Minor
Marc & Shizuka Modica
Jean & Guy Moffat
Beth & Jeffrey Monaco
Gerald Monnat
Karen M. Monson
April L. Montgomery
Voe & Robert
Montgomery
Moore Masonry, Inc
Jo Ann & Deloy Moore
Kyna & Andy Moore
Matt & Ann Moore
Patricia S. Moore
Scott Moorhead
Elizabeth F. Morgan
Bonnie Morgan
Juliana Morgan & Sashi
Theresa Morgoglione
Anne & Scott Morrill
Catherine Morton
Tammie Moses/Moses
Tax
Mosquito Squad of
Charlottesville
Libby Palmer
Mossman
Mascha Mowry
Deborah M. Murray
Langhorne K. Murray
Merrick & Steve
Murray
Marsha R. Musser
Rose Myers
Ruth B. Myers
Daphne & Paul Myhre
Jessi Nadkarni
Native Son, LLC
Sandra & Hans
Natterer
Sarah & Kenneth
Neathery, Jr.

Lisa Nelms
Bonnie Neuss
Alex Newell
Bill & Betty Newman
Lindsay C. Nolting
Ann & David
Normansell
Julia L. & Richard
Nunley
Martha & Dan Nunziato
Chris Oakley & James
Beall
Mary Elizabeth Oberle
Daniel O'Connell
John O'Connor
In honor of Stella, Bo &
Knox O'Connor
Carolyn & Mark O'Hara
Amy & Tom O'Leary
Dr. Theresa Olivo
Barbara & Carl
Omohundro
Dr. Angela Orebaugh &
Tammy Wilt
O'Suzannah
Sarah Katharine Owen
Daniel A. Owens
Sarah Ozturk
Bullett Palmer
Edwina Pancake
Ellen Parker
Kristina & Eric Parker
Matt Parker
Jim & Gracie Parks
Diana & Harry Parlette,
III
Mary Charlotte Holland
Parr
Roger Parry
Margaret & Monte
Parsons
Pass Thru Fund
Beale Payne
Susie C. Payne
Ericka Pearce &
Michael Williams
Cheryl C. & Norman
Pearson
Shirley & Arthur
Pearson

Ellie, Jenna & Mark
Pedersen
Penn Veterinary
Supply, Inc.
Jean Perry
Christine Peterson
Katherine & Larry
Pettit, Jr.
Charleen & Neal Pfaff
Kay Pfaltz
Clorisa Phillips &
Alexander Horniman
Lucia & Robert Phillips
Lois & Warren Pitts
Lee & George Politis
LF & Frances Ponton
Wayne & Lori Ponton
Ponton's Quantum Leap
Fitness
Katelyn Pontore
Eleanor S. Porter
Marshall Poulson &
Carroll Justis
Emily & Enos Powell
Chelsea Power
Kimberley & Barry
Prendergast
Edward and Barbara
Preston
Jean & James Price

Monique & Bill
Pritchard
Promac, LLC
David Propst & Jennifer
Fowler Propst
Paula Lynn & Joseph
Quagliana
Jean Quigley
Susan & Jim
Quisenberry
Judith F. Ramsden
Anne & Vernon Raque
Carol & Kenneth
Rasmussen
Sara Rasmussen
Beverly Ratliff
Jane & George Ray
Megan Raymond
Julia O. Rea

Rebecca's Natural
Food
Claude Reed
Cathy & David
Reinhard
Relatives & Friends
Judith & Jerome
Rendich
Christine & Nicholas
Reppucci
William R. Reusing
Carol Reynolds & Doug
Nelson
John Reynolds
Karyl Reynolds & Bill
Whary
Karen & George Rich
Dorothy Richards
Meredith & Larry
Richards
Elaine Richardson
Deborah & Dean
Riddick
Christina Riebeling &
Scott Wiley
Bonnie & Robert Riggs
Jane E. Rike
Sarah Rinehart
Dirk & Barbara Ringers
Anne Ripley
Claudia Rival
Susan & Sandy Rives
Alan Y. Roberts
Rita & George
Robinson
Brian Roddy
Jonathan Rodenbaugh
Martha & Brad
Rodgers
Briarley C. Rogers
Doris & Frank Rogers,
III
Joanne & Alan Rogol
Leah Romanoff
Nancy & David Ross
Pam & David Rossetter
William H. Rough
Rovers Recess
Virginia & James
Rovnyak
Carolyn Rowe

Judith & James Rowe,
Jr.
Melissa L. Rowland
Joan E. Rudel
Amy Ryall
Kathy Ryals
Alison L. Ryan
Karen Ryan
Shannon Ryan
Joy & Joe Sabol
Janet & George Sakell
Peter Araujo Salas
Ted & Barb Sander
Delnavaz Sanjana
Jill Saperstein
Courtney Sargeant
Angela & Robert
Sawyer
Isabel & Chip Sawyer
Susan & Leo Scaggs
Paul & Sandra
Kristen Scheller & Matt
Brinckman
Peggy & Peter
Scherman
Geri & Bruce Schirmer
Christine & Eric
Schrank
Fred & Mary Schubert
Joan A. Schuette
Richard F. Schupp
Cindy Schutt
Karen Schwenzer
Betty C. & John Scott
Bill Scott & Ann
Proudlove
Joanne Scott
Carla K. Scouten
Frank Scrogham
Rachel J. Setear
Renee M. Severin
Mary & A.C.
Shackelford, Jr.
Hubert A. & Ann S.
Shaffer
John Shannon
Alfred Shapero
Shirley & Warren Shaw
Christine Shearer
Booger & Wally Shell
Debbie Shelor

Nancy & Gene
Sherwood
Judy Shields
Vicki S. Shiflett
Leah & Kevin Shiraishi
Gerald Shoemaker
Wendy L. Showers
Wanda & David
Shuster
Margaret & Fred Sibley
Mary & William Sihler
Rachael Silver
Silvergate Realty, LLC
Theresa & David
Simmons
Mary & John
Simonette
Erin & Travis Simpson
Joann M. Simpson
Susan Singhas
Marta Skrybailo
Richard A. Skwarlo
Heather Slater
Carolyn A. Smith
Cindy L. Smith
David & Anne Smith
Earl Smith
Kelley Smith
Laura Smith
Peggy Smith & Andy
Larner
Martha Smythe
Linda & Jeff Sobel
Solidarity Crossfit
Marie & Hal Souder
Patricia Spacks
Carole Springer
Tim Sprinkle
Audrey Pace-Sprouse &
Charles Sprouse
St. Gabriel Organics
Janice & John Stalfort,
II
Starr Hill Events
State Farm Insurance
Companies
Margaret & Richard
Stavitski
Rebecca Steele &
Clarence Fisher
David Steffan

Brenda & William
Steigman
Danielle & Wes Steiner
Philip Stenger
Deborah Stewart
Lisa & David Stewart
Katie & Kevin Stiffler
Jennifer & Joshua
Stinson
Martha & Scott Stinson
Paula & George Stone
Clarissa & Stephen
Street
Heather Streich
Cindy & Robert
Strickland
Pamela Strong
Eleanore B. Sturgill
Suzanne & Todd
Sturman
Cynthia & Joe Sullivan
Ellen Roberts Susi
Beverley W. Sutherland
Marilyn Swinford
Kristin & Joseph
Szakos
Malissa Takacs
Candace Taylor and
Steven Sweat
Danielle Taylor
Elizabeth & Harrison
Taylor
Lisa Taylor
Robert F. Taylor
Caroline Teague
Geri Teeter
Debbie & Gregory
Telep
James Terrell
The Juice Laundry
Alexandra Theriault
James Thomas
Pam, Randy & Jennie
Thomas
Marshall & Virginia
Thompson
Robert M. Thompson
Holly Thomson
Nancy Thornberry
Kevin & Theresa
Thorne

Prudence & Michael
Thorner
Ken & Joy Tilley
Timberwood Grill
Jane & Tommy Tirrell,
III
Chuck D. Tobin
Ann Toms
Lamar & John Toole
Dr. & Mrs. Thomas
Towberman
Katherine & William
Towler
Nancy C. Townsend
Mary & Edmond Traille
Miles Treakle
Anne Treichler
Michele & Wade
Tremblay
John L. Trimmer
Neal Trivedi
Susan & James Turner
Suzanne Turner
Nancy & Peter Tuz
Ron & Lynda Tweel
Anna Degli Umberti
University of Virginia
Alumni Association
John Updike
Justyne & Joseph Van
Dyke

Robert J. & Rebecca L.
Vanlier
Amy Varner
Ronald Vereen
Paul T. Vesely
Donna & Dick Vinal
Lynda & William Vining
Tihamer & Gloria Von
Ghyzcy
Stephen F. Vondra
Renate Voris
Vivian Wade
Dr. & Mrs. Joseph J.
Waff III
Marianne Walendowski
Kathryn Walker
Anne Wallace
Tim Wallace
Arden B. Walters
Mary Ellen Waltz

Ava Ward
Barbara J. Warren
Warrendale Sales
Elaine Warwick
Michelle & Dave
Warwick
Stuart and Kay
Watterson
Diana Webb
Susan & Gregory
Webb
Douglas Webbink
Martha & Peter
Webster
Rebekah Webster
Mike & Janet Weeks
Tammy Weisman
Christopher Weiss
Linda & Gareth Weldon
Christy & Anthony
Wenzel
Leanna West
Jean & Munsey Wheby
John & Margaret
Wheeler
Hester H. Whitcher
Barbara White
Debbie White & Roy
Cadoff
Lonni & David White
Timothy Whitehurst
Morgan & Marlene
Whiteley, Jr.
Rebecca & Zach
Whitlow
Carol Whitman
Ursela Widmere
Christine L. Wiedman
Caroline & Bill Wilhelm
Jean & Morton Wilhelm
Wenche L. Wilkins
Beth Williams
Dr. Denise Williams &
Mr. Christopher Yates
Jennifer E. Williams
Molly Williams
Loretta & Kevin Willis
Patty & John Willis
Jan & John Wilmer
Barbara B. Wilson
Elizabeth Wilson
Bill Wingfield

Latane Wise
Alyssa Wittenborn
Ann & Jerome Wood
Barbara & Richard
Wood, III
Gretchen Wood
Preston Wood
Rebecca Wood
Peggy & Bob Woodall
Elizabeth Wooding &
Kenneth Cady
Connie Woodruff
Andrea I. Woods
John & Denise
Woodson
Allison & Gene Wright
Joe & Lisa Wright
Meghan Yeatts
Jessica Young
John Zani
Rebecca Zee
Ginny & Rick Zeller
Barbara & William Zorn
Linda & David Zuby

\$1-\$99

David & Connie
Abdullah
Lori Abrams
George & Sharon
Ackerman
Alexa N. Adams
Donna & Michael
Adams
Ellen Adams
Janet Adams
Nina B. Adams
Marsha L. Affeldt
Peggy Aglubat
Craig Kushel Agule
Mo Ahmed
Mary Frances & John
Aiken
Hasan Al Mulhem
Albemarle
Charlottesville Pilot
Club
Susan J. Albert
Thomas Albro
George Charles Alex
JudyLynn Alford
Buki Aljiji

THANK YOU FOR YOUR SUPPORT

Samantha Alleman
Betty Allen
David Allen
Diane & Wayne Allen
Greg Allen
Mark Allen
Mary Allen
Stacy Allenbach-
Stunes
Abby Alley
Dave Alley
Sharon Almond
Stephen & Carolyn
Altenderfer
Gary Alter
Angela Amat y Leon
Peter & Heather Amato
Phyllis & James
Ammons
Lisa Amols
Daria Anderson
Ian Anderson
Mary Anderson
Steven & Anne
Anderson
Malcolm Andrews
Melissa Andrews
Leslie Louise Andrus
Gail Angell
Bobbie & Jeffrey Anker
Anonymous
Charles Antrobus
Nancy Armstrong &
William Holet
Kathy & Jeff Armstrong
Mary Lee & Charles
Armstrong
Sara W. Arneson
Augusta & Kevyn
Arthur
Eden Artz
Juan Ascoli
William & Deborah
Ashby
Joyce P. Atwood
Nicole W. Audibert
Barbara C. Aulebach-
Ross
Pamela Ayres
Cindy Baber
Joe Baber

John Baber
Krystal Baber
Bright Ideas
Colette Bahn
Suzanne & Michael
Bailey
Carrie Baker
M. Leonard Baker
Susan Ballagh
Christina Ballard
Edith Ballard
Karen & Bootie Ballard
Judy Bancroft
John Bandes
Lisa Bange
Gerda Bansleben
Barbara Kirkman &
Clark Baumbusch
Lindsay Barbara
Barbara & Dennis
Barbour
Elizabeth Barbour
Mary A. Barnabei
Donna Barnd & Chris
Moskaluk
Marva A. Barnett
Lint Barrage
Sharon K. Barrett
Barrett-Johnson &
Associates
Julie L. Basic
Marty Bass
Becky & Chad Bassett
Alexandra Bates
Chris Batt
Denise & Keith Batt
Battelle Always Giving
Aunt Karen
T.R. Baun
June & Grayson Beale
Lynly Beard
Zakira & Val Beasley
James E. Beck
Mary Elizabeth Beck
Joan Beckwith
Elizabeth & Wayne
Beddow
Dolores G. Bedell
Kimberly & Richard
Bednar

Deane & Mark
Begiebing
Melody & Daniel
Beisner
Winnie Bernard
Bill Bernstein
Ed Berres
Linda B. Berry
Anne Bertrand-Guy
Barbara D. Best
Tao Tao Best-Harris
Vickie & Gary Bibb
Stephanie D. Bickers
Ted & Peggy Bidwell
Daniel Bieker
Christine Billies
Patricia & Robert
Bingler
Linda Birch
Rosemary & Eric
Birkholz
Theodore Bittner
Bettie W. Black
Sheila Blackford
Bronwyn Blackwood
Patsy & Eric Blaesing
Mary Kay Blake
Janice Blanch
Betty & Paul Blincoe
Carla & George Blincoe
Melvin L. Blincoe
Ralph J. Blincoe
Diane Bloom
Katherine Boardman
David & Nancy
Bogdonoff
Cynthia & Michael
Boggs
Cathy & Randy Bogle
Andrea & Robert
Bogley
Doris A. Bohon
Kathy Bohorfoush
Lori Boles
Stephanie & Stephen
Bolton
William & Sheller
Bolton
Barbara R. Bonesteel
Andrew & Frances
Boninti

Frances Bosserman
Jane Shannon & Don
Bourret
Andre Bower
Kathy Bowers &
Richard Comfort
Dana Boyd
Mary Lou & Tom Boyd
Sally Boyd
Christopher Boyers
Leigh Boyes
Lynn Boyter
Corliss Bradley
Shannon Bradley
Melissa Brads
Diane M. Bradshaw
A. Clarke Brady
Olivia Branch
Margaret Brandis
Babi & Randy Branger
Kim & Kevin Branham
The Brashear Family
Aubrey & Pamela
Breedon
Kristin & John Breen
Lydia S. Briscoe
Michael & Melanie Britt
Cate Broadaddus
Dora Kay Brockman
Erik & Karen Brooks
Jennifer Brooks
Andrew & Joyce Brown
Carol & Robert Brown
Debi Brown
Elliott, Wendy, Paige &
Scott
Jeffrey Paul Brown
Kathi Ann Brown
Laura Brown
Mary C. Brown
Richard Brown
Sylvia M. Brown
Macey Brown
Skylar Brownfield
Christina Bruce
Maggie Bruno
Delores & David Brush
Anne Brushwood
Bronwyn Bryans
Janice Bryant
Lois Bryant

Terri & Wayne Bryant
Catherine Bub
Joseph Buchan
Carol W. Buckner
M. Denise Buddendeck
Grace Bull
Beverly Bunch
The Bunn Family
Maura Burchette
Jean E. Burke
Martha Burke & William
F. Goodrich
Roger & Cindi Burket
Nichole Burkholder
Katheryn Surface
Burks
Carrie Burns
Charlotte Burns
Jasmine Burns
Whitney Burns
Ananda Burra
Eleanor Busa
Carol Gibson Busching
Rebecca Bushey
Judith & Jerry Butler
Joyce & Frank Butros
Nancy & Bob Button
Lulu
Railton Cabbell
Laura Caggiano
Kimberly Calderaro
Caldwell & Orkin
Emily & Michael
Callahan
Julie & Patrick
Callahan
Mary-Catherine Calvert
Christine & James
Camblos, III
Ruth Cameron
Antonio & Denise
Campbell
Kayla Campbell
Krista Campbell
Jenny Canalicchio
Alice & Jonathan
Cannon
Shelly Canterbury &
Chip Bumgardner
Mary Hill Caperton

Carol & Michael A.
Caplan
Rose & Rob Capon
Kelly Cappio
Adrienne L. Carlee
Katie Carlson
Rebekah L. Carmel
James Carnes & Clark
Hantzmon
Ann M. Carney
Michelle Caron
Kathy Carpenter
Martha A. Carpenter
Sandra & Joey Carr
Marshall Carter
Steven & Sally Carter
Terry Carter
Cindy Cartwright &
John Frazee
Marie Casalini
Debie Cash
Cathy & George
Carpenter
Jamie, Tate, & Gid
Elaine & Chuck Cayton
Lou & Janice Centore
Central Virginia
Chapter Military
Officers Association
of America
Connie Chan
Byron & Andrea
Chandler
Marty & Harvey
Chaplin, Jr.
Lori Chapman
Jen Charlebois
Idette Charlie
Charlottesville
Automotive Refinish
Supply
Christine Charters
Valerie Chasin
Catherine & Aldo
Chavez
Michael Childress
Meta Chisholm
Michael Chorzempa
Lynne Christian
Joy Claibourn & Paul
Martin
Sidney Schulman

Katherine Clark
Elis & Sam Clarke
Anita Clayton
Joan Clements
Roy M. Clements, Jr.
Shelby T. Clements
Sarah & Tom Click
Sheena Clift
Haley Cline
Margaret N. Cloutier
Howard & Kimberly
Cobb
Barbara Coble
Mary Ann Coffey &
Murphy Moss
Pat Coffey
Richard Cohen
Lauren Coldren
Jeffrey Cole
Sam Cole
The Coleman Family
Betty Coleman
Lori Coleman
Susan L. Coleman
Rebecca T. Coles
Carolyn Colley
Vreni & David Collier
Jenny Collins
Anne M. Colvin
Leanne Colvin
Sherry Comer
Holly Compton
Christina Condit-
Chadwick
Kim Condrey
Donna Conley
Dot & Tom Conner
Brian Connolly
Brooke Conover
K. Daniel & Sue Ann
Conquest
Anne & Carter Conrad
John & Nancy Cook
Polly, Gregory, & Lucia
Carrie & M. Truitt
Cooper
Christopher D. Cooper
Isabella Cooper
Liam & Katya
Copeland
Beth Coppin

Poppa & Momma
Coppin
Core Knowledge
Foundation
Nyssa Cornelius
Laura C. Covert
Paula Coyner
Susan & William
Craddock
Susan B. Craig
Janis Craun
Cheryl Cravino
Jane Crawford
Jane & Bruce Crawford
Makenzie Crawford
Lori Crayon
Ed Creasy
Charles Crenshaw
Thelma Crenshaw
Sid Creutz
Brenda & Joey Crider
Ruby & John Cronk
Debra & Spencer
Crowder
Ethel Crowe
Crozet Veterinary Care
Center
Will Crutchfield
Beth & Gary Cuccia
Jenniffer Cui
Claire & James Culver
Susanne Cummings
Elizabeth & John Curry
Christi Curtis
Michael Cushing
Dorothy Dabney
Neely Dahl
Kirsten Daisley
Ellen Dale
Susan & Michael Daley
Jenine Daly
Vic and Ace and
Biscuit, Muffin, Martin
and Sophie
Trish Darby
Barbara & Hugh Darnell
Adrienne Darrah
Carli Daugherty
Linda David
Jacquelyn Davidson
Sarah Davies
Angela Davis

Bridget A. Davis
Doris & Randy Davis
Ruth J. Davis
Samantha Davis
Sarah & Hal Davis
Teresa Davis & Bill
Nelson
Ann Davison
Heather Davison
Susan Dawson
Nathan Day &
Samantha Toet
Baxter De Deo
Thomas J. De Maio
Mildred S. Dean
Gerald S. Deane
Mary & Peter Deaver
Donald & Elaine
Debanico
Ashley Deering
The Deigls
Sandra DeKay
Diane & Hugh
DeLaunay
John Delehanty
Joan P. DeLong
Squid DeNatale
Rob & Adrienne Dent
Patricia DeNunzio
Elaine DeSimone
Helen E. Destrempes
Terri Di Cintio & Chip
King
Cora Diamond
Deborah Diamond
Wendy & Daniel
Dicandilo
Jason, Charlotte,
Brittany, Dalton &
Emma Dickerson
Heather & Bill Dickey
David W. Dienger
Marguerite & Thomas
Dierauf
Robin Dierking
R. G. Dimberg
Riley, Tucker, Elliot &
Cathy Dimberg
William Dirienzo
Winifred Disandro
Mary Divine
Miss Mirabel Divita

Ernie & Janice Dodrill
Penney L. Dodson
Nancy Dofflemeyer
Dolce Vita Baskets
Lois & Jerry Dollens
Patricia A. Doniger
Sarah Donnelly
Katheryn Doran
Barbara Dorrier
Karen & Donald
Dougald
Victoria and Josephine
Dougherty
John D. Dove
Dave & Noel Draine
Jayleane Drucker
Charlotte Drummond
Michael Duddy
Melissa Dudek
Cindy Dudley
Sharon & Sonny
Dudley
Maggie and Matt
Duensing
Alice E. Dulaney
Ann & John Dunn
Joyce Dunn
Lauren Dunn
Linda & Robert Dunn
Lynda L. Dunn
Jean Dunnigan
Mildred Dunstan
Jessica Dupont &
Andrew Fickley
Jordan DuPont
Katelyn Durkin
Jane Durrer
Leah Dymek
Beatrice & Richard
Dzagan
Mark Eades
The Kittlesen/Edelen
Family
Spicer Edmonds
Carole Edwards
Helen M. Edwards
Jennifer Ehlers
Amelia Sims
Eleanor, Mazie,
Catherine & Ellie
Elizabeth & Richard
Worch

THANK YOU FOR YOUR SUPPORT

Lois Dunfee Elliott
 Steve Elliott
 Judy Ellis
 Ellie Ellison
 Karen & Dave Emmitt
 Angela Enciso
 Steve Engel
 Nancy A. Engleman
 Lisa Eorio & Cliff
 Maxwell
 Petie & Ernie Ern
 Sandra & Eugene
 Essner
 Jennifer Estep
 Jeff Etten
 Erika Eurus
 Jess & Zach Eustace
 Andrew Evans
 Marc & Karin Evans
 Elizabeth Ewing & Skip
 Platt
 Charlene Exline
 Jessica R. Exline
 Sue Fader
 Bonnie Falbo & Dan
 Ehrman
 Justin Falco
 Paula Fallon
 Dawn Falls
 Louise Farbstein
 Martha Farlow
 Mercy Farnum
 Mary Farrelly
 Tamela Farris
 Sallie V.P. Feild
 Jo Ann & Wayne
 Ferguson
 Monica & Chris
 Ferguson
 Sue Ellen & Steve Fey
 Horace E. Fidler
 Lesley Field
 Andrew Lee Fielding
 Dan & Mary Fielding
 Emmy Fields, Cambria
 Jones and Margaret
 Ann Graves
 Miriam Fields
 Mike Fietz
 Judith L. Fike
 Nicolas Finck

Page R. Flannery
 Barbara H. Fleming
 Andy & Pam Flynn
 Susan Lee Foard
 Tavia Fonseca
 Kathy Fontenot
 John D. & M.E. Forbes
 Gabriele Ford
 Nancy R. Ford
 Katie Forkin
 Jody Forman
 Thomas Forrester
 Brian Pusser &
 Rebecca Foster
 Alton Fox
 Ken Fox
 John Francis
 Lisa Franco
 Bobbin Franklin
 The Franks Family
 Moria Frazer
 Kate Frazier
 Laurence Fredrick
 Sheila & Jeremy
 Freeman
 Beth Freking, MD
 Cynthia French
 Melissa Frost
 Martha Fruehauf
 Anna Fuller
 Betty Funkhouser
 Katie & Wayne Fusco
 Joby Gaicalone
 Jennifer Gaines
 Tracey Galbraith
 Mary Louise Gallagher
 Gallerycorp, Inc.
 Kimberly Gallo
 Kate Galloway
 Ellie Gamble
 Jeffrey Gander
 Marie Ganyard
 Camille Garcia
 Rise M. Garcia
 Andrea Gardner
 Harriet K. Gardner
 Julie Garmel & Jeff
 Greer
 Jeffrey Garrett
 Doris & Richard
 Garrison

Fay Garrison
 Pam Garrison
 Claudia Garthwait
 Sarah Gaskin
 Renee Gay
 Lisa Gay-Milliken
 Linda K. Gehle
 Elizabeth B. Gentry
 Catherine L. George
 Brandi C. Gibbons
 Beverly & Donald
 Gibson
 Bela Giese
 Suzanne Gigante
 Carroll & Robert Gilges
 Shirley & Jay
 Gillenwater
 Marsha & Joseph
 Gillerlain
 Amy & James Gillespie
 Mary Cooper Gilliam
 Maryanna L. Gilmer
 Ray & Eileen Gilmer
 Linda Girvin
 Ali Glassie
 L.D. Glosser
 Corinne Glover
 Cortlandt & Andrew
 Glover
 Sylvia Glover
 Barbara Goldberg
 Lucy Goldman
 Linda B. Goldstein
 Eillen & Jose Gomez
 Terri Gomez
 George & Carolyn
 Good
 Stephanie Good
 Roberta & Wallace
 Goode
 Richard & Donna
 Goodling
 Betty Mars Goodman
 Howard E. Goodman
 Kate Goodrich
 Mark and Barbara
 Goodson
 June Goodwin
 Emily Gordon
 Shea Tiller

Lise & Christopher
 Gordon
 Chris Gore
 Rachel Goretsky
 Leon P. Gorman, III
 William Schoonover
 Scott & Karen Goss
 Jared Govan
 Anne Gowdey
 Patricia & Stephanie
 Graham
 Sarah I. Granger
 Adrienne & Ron Granitz
 Beth Grant
 Martha M. Grasty
 Kay Graves
 Missy Graves
 John & Mary Graysar
 Great Terms Insurance
 Agency
 Betsy & Michael Greco
 Dorrit Green & Michael
 Rodemeyer
 Mary Alice Green
 Bennet Greenberg
 Jean Greenstadt
 Roxanne Greer
 Joan & Peter Griffin
 Stephanie Griffin
 Dana Grimm
 Patricia & Christopher
 Grimm
 Sunny & Dan Gritsko
 Pat Grizzel
 Patricia Groeninger
 Alice & Donald Gross
 Deena Gross
 Kathy Gross
 Meredith P. Gross
 Margaret M. Grove
 Barbara & Thomas
 Grzymala
 Teri & Andrew Guertler
 Carole A. Guillemin
 Camille & Robert
 Guinnane
 Xiaoti Guo
 Margaret & Howard
 Gutgesell
 Stephen S. Guy
 Susan J Hackman

Marion W. Haddow
 Christine Haden
 Elizabeth & Michael
 Haden
 Aleisha Hagy
 Christopher Hahn
 Otis Hahn
 Temple & Britta Hahn
 Heather Haines
 Melissa Hairston
 Susan S. Hakala
 Hale Pet Door National,
 LLC
 Cleo S. Hall
 Lara & Kyle Hall
 Sharon & Jonathan Hall
 Dick Halliwell
 Diane Halvorsen
 Emily Hamilton
 Terry Hamlett
 Anna Hammarskjold &
 Peter Sushka
 Daryl Hammond
 Susan Hammond
 Mary A. Hamrick
 D. W. Hand
 Evelyn & Eugene
 Haney
 Haney Family
 Marilyn & James Haney
 Doris Hanger
 Lori A. Hanger
 Danielle Hanley
 Noreen & Joseph
 Hannemann
 Mary Hansen
 Diane Hardee
 The Hardy-Moore Family
 Diana Harlow
 Laura Harlow
 David Harmon
 Thomas Harmon
 Ann S. Harris
 Robert Hart
 Hilary Harwood
 Julie & Glenn Hasenfus
 Maia Haske & Miro
 Amato
 Scout & Boo
 Janet D. Hatcher

Robert Hattler
 India & John Haun
 Kedra Hauser
 Kimber Hawkey
 Hugh & Debbie Hawkins
 Meredith & Tim Hay
 Aisha Hayat
 James & Mary Lynn
 Haycraft
 Joan & Bob Haynes
 Polly B. Haynes & Craig
 Campanelli
 Gregory Hays
 Sumter Hazzard-
 Adolph
 Nancy & John Healey
 Patricia Hearn
 Jackie & Richard Heath
 Mary Hebblethwaite
 Scott Height
 Susan Held & Michael
 Montgomery
 Lisa & Mark Helprin
 Maria & Daniel
 Hemmings
 Anne Hendrick
 Carol A. Hendrix
 Emily & David Henley
 Melissa Henriksen
 Melissa Hensley
 Cheryl & Michael Heny
 Matt Hepler
 Teresa Hepler
 Marilyn Hermann
 Denney Herr
 John Herr & Mary Jo
 Herriman
 Susan & Dale Herring
 Erika Herz
 Priscilla Hesford
 Nell & David Hibbitts
 Anne Hicks
 Deb Higgins
 Heather M. Higgins
 Abe A. Hildebrand, Jr.
 Colin Hill
 Corinna Hill
 Helen Hill
 Sarah Hilterbrandt
 Sarah Hinkle
 Darlene Hinton
 Theresa Hinton

Marilyn D. Hocking
 Meret Hofer
 Kathleen Hoffman
 Kirsten Hoffmeister
 Cindy Hogan
 Brandy & Todd
 Hollabaugh
 Barbara Holland
 Nancy Holland & Victor
 Lee
 Veronica M. Holland
 Lt. Hollomon
 Marsha & Ed Holloway
 John E. Holmes, Jr.
 Harry Holt
 John Holt
 Ted & Mona Homyk
 M Burke Hood
 Nancy Hooker
 Colleen Hoover
 Sally & Dale Hopkins
 Charlotte & Avery
 Hoppe
 Nicholas Hoppe
 Tracey Hopper & Douglas
 Campbell
 Nancy & Michael Horne
 Kyle Horst
 Patricia Horton
 Susan & Robert Houde
 Gail H. Houser
 Colin Howard
 Daryl & Mattie Howard
 Mr. & Mrs. W. N. Howell
 Sherrard H. Howen
 Lani Hoza
 The Kids of Waylands
 Grant
 Jill & Walter Hubbell
 Wayne & Janet Hudgins
 Janice R. Huebner
 Britney Huff
 Karen R. Hufford
 Sarah E. Huggins
 Tracy Hughes
 Karen Hukari
 Tahira Hulburt
 Robin Huntington
 Bob Hyde
 Independence Resident
 Council
 Lillian Inge

Linda & Michael Irons
 Michele Irvine
 Ava Jackson
 Evelene M. Jackson
 Jackson-Via Girls on
 the Run
 Beverley J. Jacobs
 Rebecca Jacobson
 Dr. & Mrs. John A Jane,
 Jr.
 Amy Jansky
 Sutton Jaskot
 Omad Jazarah
 Roux Taylor
 Gregory Jecmen
 Virginia Jedda
 Roberta Jennings
 Jim Price Chevrolet
 Jim Snead Ford
 Lindsay & Jacob Jobe
 John & Cici
 Col. Michael M.
 Johnson
 Heidi Johnson
 Jean & Nick Johnson
 MC Johnson
 Sherry Johnson
 Tina Johnson
 Caroline & Jerry Jones
 Darrell & Jean B. Jones
 David W. Jones
 Diane & Robert Jones
 Emily Jones
 Lisa & Jeremy Jones
 Phyllis Jones
 Rhonda & John Jones,
 Jr.
 Suzanne W. Jones
 Terri Jordan
 Terri & Jonathan Jordan
 Leah Jung
 Ann Junkin
 Margaret A. Kahler
 Cemile Kahveci
 Carey Kalagher
 Janice Kaltenbach
 Anna Kamstra
 David Kane
 Virginia & Allan Kanter
 Susan Kaplan
 Kacie Karafa
 Audrey & Lewis Kardos

Michelle & John
 Karpovich
 Amy & Scott Karr
 Cri Kars-Marshall &
 John Marshall
 Paul & Janet Kasparson
 Cheryl Kasper
 Jim Kaufman
 Anne & Paul Kawas
 Eric & Carole Keathley
 Arlene W. Keeling
 Debbie Keener
 Kip Keener
 Nicole & Michael
 Keens
 Kimberly Keese
 Hilde Keldermans
 Mocha
 Aileen Kelly
 Barbara Kelly
 Greg Kenley
 Joan A. Kent
 Kevin Kerr
 Eugene Kesler
 Barbara & Danny
 Kesner
 Lorrie Ketterman
 Edgar & Mary Keyton
 Elise Kiewra
 Susan Kiley
 Rachel Kincaid
 Allan & Ada Marie
 Kindrick
 Linda King
 Susan E. King
 Anne Kinsley
 Tommy Kinstle
 Caroline & P. Kennedy
 Kipps
 Rachel & Kyle
 The Kirby Family
 Mary Beth & Bob Kirby
 Emily Kirk
 Gail Leftwich Kitch
 Gary & Lorraine Klein
 Alyssa Kletnik
 Bonnie & Daniel
 Kliamovich
 Sharla Klingel
 Samantha B. Knapp
 Sherry Knight
 Jean Knorr

Patsy E. Koestner
 Katie Kois
 Sandra C. Korfanty
 Pamela Kosmach
 Milena Koussa &
 Brendan Murphy
 Brenda & Dave Kovarik
 Robert B. Fudge &
 Steven J. Kretzmann
 Laura Kross
 Dave Krovetz
 Linda Krutul
 Denise Kulp
 Doris Kuttesch
 Shirley A. Kyger
 Labus Family
 Julie C. Lacy
 Julia Laffond
 Mary Ashley Laine
 Edward Lamb &
 Pamela Norris
 Rebecca Landau
 Kathleen & Nicholas
 Lang
 Brenda F. Langdon
 Charles Langham
 Dorothy Lansing
 Mr. & Mrs. Tony
 Laquintano
 Nora & Robert Larsen
 Jean Larson Mineart
 Gina Lascano
 Jennifer Lail Lassiter
 Daphne D'earth
 Latham
 Karen & Bertrand Latil
 Edward H. Laughlin
 Debbie & Dom Launi
 Michelle & Ralph Law
 Carolyn Lawlor
 Peggy J. Lawrence
 William Lawrence
 Lisa Layne
 Nadia Lazo
 Tony Le Vere
 Rita Leadem
 Kellie Leake
 Pam & Charles
 Leathers
 Sally LeBeau
 Martha D. Leclere

THANK YOU FOR YOUR SUPPORT

Rebecca & Thomas
L'ecuyer
Kelsey Lederman
Beth & Wendell Lee
Judy Lee
Maryann & David Lee
Ruth & Robert Leffers
Phyllis K. Leffler
Robert LeHeup
Linda Lemieux
Anne Lemley
Patsy Leonard
Sandra Leonard
Scott Lepto
Barbara & Eli Lesser
Betty Letlow
Timothy S. Levenberg
Melissa Levy
Dean Lewis
Peyton & Bill Lewis
Alexis Leys
Ruth & Randall Lillard
Kaylee Linaberry
Lindsay T. Milby, Inc.
Carol & Ky Lindsay
Ginny & Gordon
Lindsey
Humphrey Liu
Patricia Llewellyn
Patricia A. Locke
Deborah & Andrew
Lockman
Lisa and Raymond
Lockwood
Andrew and Sarah
Lofton
Sarah Logan
Marsha & Ivan Login
Carole & Leonard
Lohman
Cartie Lominack &
Kristine Hall
Jennifer Lonas
Bianca Loreda
George Loukas
Candice & Jason Love
Bradley Lovelace
Sandy Loving
Gail & Bill Lowe
Geri Lowe
Patricia O. Lowry

Courtney Lucier
Ginell LumHo
Judy Lung
Kathy Lung
Xinh Luu
Galina Lyles
Kenny Lynch
Carl & Ruby Lynn
Cheryl Lynn
Patricia D. Lynn
Shawn T. Lyons
Margie Swanson, Vicky,
Lisa and Wendy
Ian MacLean
Leslie & Kendall
Madigan
Sarah Magerfield
Dea Mahanes
Catherine & Thomas
Mancuso
Barbara J. Mann
Lauren Manning
Dana Mann-Tavugia
Rene Marberry
Elizabeth Margutti
Anna Marin and Sisi
Pohl
Ioana Marin
Diane & Neal Marks
Sharon & Charles
Marks
Denise & Tommy
Marley
Helen & John Marr
Ann Marshall
Karen Marshall
Michele Martin &
Preston Syme
Shirley R. Martin
A Friend
Brian Mason
Holly & John Mason
Kate Mason & Mike
Fitts
Boo & Bill Mathers
Susie & Murdoch
Matheson
Nan & Granddaddy
VanFossen
Chris A. Matthews

Richard & Cathy
Maupin
Carol Lynn Maxwell
Thompson
Eleanor G. May
Nancy May
Nancy & Gerry Mayer
Sarah Mayer
Brittany & Andrew
Maynard
Constance A Mays
Marie & Donald Mays
Randy Mays
Deborah McAndrews
John McAneny
Joseph Mcaneny
Amber McCain
Sue Ann McCarty
Gena McClanahan
Rebecca McClure
Ernest McCravy
Mary McCue
C. McCullough & K.
Ahern
John McCullough
Judith & Walter
McDaniel
James & Jean
McDonald
Margaret D. McElroy
Barbara R. McGill
Megan McGovern
Dana & Patrick
McGrath
Avis McGuiggan
Nicholas McIntosh
McKenzie McLain
Mary Linda McLearn
Betty & David
McMullen
Deborah & Patrick
McPhillips
Richard Meadows
Barry Meek
Sarah Meister
Janet B. Meistrell
Robin & David Mellen
Virginia Melton
Amy Melville & John
Schroll
Sandra Mendez

Emily Mercadante
Merck Foundation
Leih Merigian
Merkle | RKG
Carol & Thomas Merlo
Johannah & Garrison
Merrill
Phyllis W. Merritt
Anne & Marty Meth
Eileen Meyer
Stephanie Meyers &
Mark Lieberth
Wendy Michalski
Elizabeth & David
Michel
Rick & Chita Middleton
Alyssa Mikytuck
Janet Miles
Jarrett & Stephen
Millard
Anne R. Miller
Bethany K. Miller
Susie Bruce & Dan
Miller
Elaine & Richard Miller
Julia F. Miller
Linda Miller
Stella Miller
Vicki Miller
Vicki & Brian Miller
Wayne Miller
Lucy Millinder
Teresa & Scott
Millirons
Patsy Minahan
Patricia & Elliot
Mininberg
Lynette Minnich
Christopher & Denise
Mislow
Georgia Mitchell
Samantha Mitchell
Marie Mitchem
Bettie Mohler
Elizabeth Molina
The Montpelier
Foundation
Judith Moody
Gary R. Moon
Judith & Harold Moon

Trevor L. Moon
Barbara & James
Moore
Channon Moore
Donna & Donald
Moore
Douglas & Joyce
Moore
Karen Moore
Natalie Moore
Danielle Morgan
Jackie Morgan
Kara Morgan
Karen Munro & Amanda
Morgan
Megan Morgan
Nicki Morgan
Sadie Morgan
Cresse Morrell
Barbara Morris
Tad Morris
Josh Morris
Joyce & Thurman
Morris
Joyce H. Morris
Lynn P. Morris
Michael Morris
Pamela Morris
Sharon Morris
Suzanne Morris
Terry Morris
Heddy Moskaluk
Todd J. Mounce
Tracy Mourton
Betty J. Moyer
Julie Moyer
Elizabeth Muir
Julia & Jose Mundo
Peggy & Larry Mundy
April Muniz
Diane Murphy
Max Murphy & Elain
Heffelfinger
Catherine Murray
Tara E. Murray
Kaitlin Mussomeli
Maria Nable
Blaise, Cihlar, J.V., &
Nikola
Cindy Napier

Allan Nathanson &
 Jeanine Braithwaite
 Carolyn & Ronnie Neal
 Kelly Kay Near
 Bettie B. Neblett
 Savitri Nekola
 Sandy Rakowitz
 Susan A. Neuhauser
 Crystal & Nathan
 Newell
 Emily & Richard
 Newman
 Stephen Ng
 Christopher Nicholas
 Beverly Gay Nichols
 Carly Nicholson
 Betty Jo Nickles
 Nicole R. Forbes
 Krista Niece
 Daniel & Elizabeth
 Nissen
 Lauren Noe
 Dave Norris
 John Norwood
 Will Nugent
 Belinda O'Berry
 Barbara G. O'Brien
 Shawn Odowski
 Emily Ogden
 Beverly Ogilvie
 Cara J. Ohlsson
 Norma & Dick Ohmes
 Jan & James O'Kelley
 Judith Oliva
 Karen Olsen
 Erin & Michael O'Neill
 Christine & Kent Oots
 Mary Orecchio
 Kathleen Orr
 Mary Orsini
 Arlene T. Oslin
 Donna & Jack
 Ostrowski
 Outlaw Design
 Company
 Hunter Overstreet
 Colleen Owens
 Anne Marie Pace
 Leon
 Donna Packard
 Sonya Padilla
 Barbara Page

Mary Page
 Arlene & Nick Page
 Daniel Pailing
 Betty B. Paine
 Carolyn Panza
 Charles Pardue &
 Susan Himelrick
 Kim Robyak Park
 Aya, Rose & Suriya
 Iulia & Christian
 Parrington
 Tammy Parrish
 Charlotte T. Parsons
 Angela Pascoli
 Catherine Pasternak
 Betsy E. Patrick
 Addielayne Patterson
 Ann Patterson
 Barbara & Charles
 Patterson
 Dr. & Mrs. James W.
 Patterson
 Anne M. Paul
 Robert Pavioir
 Cindy J Payne
 Dare H. Payne
 Peace Lutheran
 Church
 Jo Anne Peach
 Ben Cohen
 The Pease Family
 Christine Pedersen
 Melinda Peery
 Paula & Donald Pell
 Trenton Pence
 Susan Pennett
 Marie Peppers
 Pepsi-Cola Bottling Co
 Hillary Perez
 Kathryn Perez &
 Rachel Baum
 Alison Perkins
 Kathleen & Joseph
 Perpetua
 Cory Perry
 Sandra H. Perry
 Bradley and Tracy
 Pettit
 Fern Pettit
 Amy Pfaltz
 Susan Ordway Pfaltz
 Michael Pfautz

Mary Pfeffer
 Anne & Olivier Pfister
 Katie Philbrook
 Lynn Phillips
 Whitney Phipps
 Physical Therapy at
 ACAC
 Jacquie & John
 Pickering
 Meg Pickering
 Elaina, Juliana,
 Miranda, Sylvie and
 Hazel
 Janet & Jim Pietrovito
 Bob Pineo
 Josie Pipkin
 Paula & Jim Pippin
 Lisa & Steve Placa
 Tim Plant
 Stephanie Polackwich
 Rebecca Polan
 Don Rybarczyk & Carol
 Polen
 Mary C. Pollard
 Carol Pollock
 Maryline & Jason
 Pollock
 Katharine Popp
 Joseph Porterfield
 Linda Porzio
 Dotty Posey
 Rosemary Postle
 Shirley Powell
 Ike Presson
 Leana Bragg Price
 Holden, Monica &
 Michael Prichard
 Mary & Billy Proffitt
 Dennis R. Proffitt
 Helga Prosser
 Michelle Prysby
 Betty Puckett
 Nick Pullaro
 Trista Pullaro
 Sarah & Leonard Pulley
 and Rebecca
 Vaughan
 Marian Purcell
 Eric Purks
 Stacey Puskas
 Carol Quaif

Sarah & Chad
 Raaymakers
 Katherine Rabe &
 Stephen Hutchinson
 Grace Radhuber
 Leigha Rae
 Michael Ragosta &
 Kiyoko Asao-Ragosta
 Hugh A. Ragsdale, Jr.
 Karen & John Raham
 Robert & Gail Ramey
 Helene Ramos
 Marjorie Ratcliffe
 Jeff Ratliff & Margot
 Elton-Ratliff
 Susan & Lloyd Raupp
 Brooke Ray
 Irene S. Rebholz
 Karie Reed
 Kelly Reeves
 Jeannine Regan
 Kristina Reid Black
 Richard & Sandy Reid
 William & Helen
 Reifenberger
 Kate & Caroline Reilly
 Leslie M. Reiman
 Koen, Evan & Elsi
 Reinicke
 Heena & Stephen
 Reiter
 Cheryl & Bob
 Renaghan
 Harriet Resio
 Helen & Albert
 Reynolds
 Amanda Reynolds
 Dorothy Reynolds
 Edwin & Sherry
 Reynolds
 Janice & Chris
 Reynolds
 Tracey & Patrick
 Reynolds
 Susan Rice
 Susan Riddle
 Riff Raff Productions/
 Sour Fish Events
 Diane Riley
 Patricia & Daniel Rinald
 Jennifer Rinehart &
 Edward Foss

Mary Rinehart
 Jason Riner
 Lauren Riner
 PJ Riner
 Catherine Riso
 Mary Ritchie
 Melanie Rivera
 RMC Events, Inc
 Courtney Roane
 Jean & Robert Roane
 Frances Roberson
 Rose Roberson
 Maureen W. Roberts
 Tonya & John Roberts
 Goodwin Robertson
 Sally Robertson
 Shirley F. Robinson
 Timothy Robinson
 Marcy Rodeffer
 April Rodgers
 Kristen Rogers
 Vivi Rogers
 Ruth Rollins
 Gertrude & Jan Romer
 The Rooneys
 Jacqueline Roper
 Stephen Rose
 Rosewood Village
 Hollymead Assisted
 Living, LLC
 Bill Ross
 Erin M Ross
 Jeannette L. Ross
 Marion & Walter Ross
 Scott Roth
 Marilyn & Harold
 Rothstein
 Martha T. Rothwell
 Catherine & Chad
 Rowe
 Lilly Rowe
 Lauren Rowley
 Kathleen Roy
 Anne & Chip Royer
 Sydney Rubin
 Karen & Stephen Rudd
 John Runkle
 Judith Rushia
 Charles & Patricia Rusk
 Alease Russell
 Sandy Russell
 Kristine Ryalls

THANK YOU FOR YOUR SUPPORT

Dawn Ryan
Katie Ryan
Lee K. Ryder
Julie Rydlund
Maritza Saavedra
Gerald Louis Sackett
Joren Sacre
Ellen & Mike Sadler
Susan Salko
Charles Sallwasser
Susan & George
Sallwasser
Karen L. Salmonson
Gail & Dick Samuels
Matt Sanders
J. David & Betty Sapir
Annie & Paul Sartori
Carl & Kathryn
Saunders
Diana & Terry
Saunders
Eliza Saunders
Lenore Savage
Page & Stephen Savin
Kim Scala
Jean & Roger Scanlan
Suzanne Schaeffer
Kevin & Caitlin Schaffer
Carrie E. Schaffer
Nancy Schaubert &
John Simmons
David Scheerer
Noah Schenkman
Joan Scherer
Kimberly Schick
Viola & Bill Schick
Heather & Matthew
Schilling
Rihana Schiro
David & Michelle
Schlesinger
Karen M. Schmidt
Lisa Lacroix Schott
Wendy Schrimp
Nicole & Sarah Ellis
Schroeer
Amanda Schueler
Napa Schwartz
Kate Schwarz
Susan Scofield
Ruth Scotson

Joan & Stephen Scott
Sarah Scott
Scottsville Chapter
United Daughters of
the Confederacy
Betty & Wayne Seiler
Jake and Alison
Selverstone
Maya Seneviratne
Larry Setwell
Betty Sevachko
Patricia H. Severson
Alfred Shackelford
Christie & Michael
Shaps
Mary E. Sharpley
Laura Shavis
Mr. & Mrs. Tom Shaw
Peter Shaw
Susan Shaw
Kay Shean
Colleen Shearer
Valerie Shelley
Missy & Bill Shenkir
Leah M. Sherlock
Betty Sherrod
Carol Sherwood
Donna Shewmake
Anna & Joseph Shields
Julia Lewis Shields
Chelsea Shifflett
Jackie Shifflett
Lois & James Shifflett
Jessica Shifflett
Brenda & Eddie Shifflett
Fay F. Shifflett
Kim Shiflett
Donna L. Shirley
E. Shannon Shirley
Shirley Shotwell
Anita Showers
Joann Shriner
Doris & Curtis Shular
Laurie Shuren
Polly L. Sibert
Lynn Sigman & Greg
Morgoglione
Cindy & Mike Sikorski
Neil R. Silva
Caroline Simeone
Monique Simmons

Barbara & Charles
Simmons
Linda Simonds
Jennifer & Jon Simpson
Sherry Sinard & Margo
De Matteis
Deborah Sinek
SKV Group, LLC
SL Nusbaum
Insurance Agency, Inc.
Savannah Slater
Suzanne Slingluff
Emily Sloan
Robin & Gary Sloan
Glenna Slosson
Lucy & Bryan Slovon
Betty Smallwood
Joyce Smaragdis
Addie Smith
Amy E. Smith
Ann J. Smith
Ami & Bryan Smith
Judy & Robert Smith
Phyllis & Ray Smith
Sheleen Smith
Godric Smith
Cooper Smyth
Ronald & Cheryl Snead
Amy & John Snearer
Chelsi Snow
Devon Snow
Mira Aust
Beth & Baird Snyder
Cindy Snyder & A.T.
Stevens
Jean Snyder
Ruth M. Snyder
James R. Sofka
Emily & Keith Sohr
Anne Carter Somerville
Dorothy & Randall
Somerville
Joan & Jack Sorensen
D.E. & J.M. Sours
Marie & Wayne Sours
Elea Kate Southerland
Cait Southworth
Diane C. Southworth
Marian & Donald
Spano
Christopher Spencer

Ellen Spencer
Niki Spencer
Susanna Spencer &
Bob Gausman
Stuart Speth
Christine Barringer &
John Spina
Loretta Spittle
Maggie Spriggs
Sabrina Springer
Virginia & Sandy
Sprouse
St. James the Apostle
Catholic Church
Anne Stadelmaier
Alan & Helen Staley
Anne & John Staley
Elizabeth Stalfort
Debby & Jason
Stanford
Richard & Courtenay
Stanley
Ruby Stanley
MA Starr
Pam Starsia
Mary, Beth, Amanda,
Miriam
Wendi Steele
Betty & Dick Steiner
Steven Stern
Amy Stevens
Denise & Lance
Stewart
Donna Stewart
Lisa & Tripp Stewart
Neil M. Stewart
Sim & Helen Stidham
Abby Stiffler
Charlie Stiffler
Katie Stiffler
Kathleen & Vincent
Stofan
Merrill & Philip Strange
Rylee Strider
Elizabeth O.
Stubblefield
Ashley Stugard
Everette & Cenie Re
Sturm, III
Marian C. Styles
Chun Su

Emily Sullivan
Sean Summers
Martha A. Susinno
Suzanne & James
Sutherland
Missy Sutton
Suzanne & Marc
Olmsted
Megan & Nathan
Swanson
Maria Sweeney
Nell & Glenn Sweet
Judy & Palmer Sweet
Roxie Sweikar
Kristin Swenson &
Craig I. Slingluff, Jr.
Robert Swierski
Lloyd Swift
Nora S.
Susan O. Tamsett
Joan & David Tanner
John Tansey
Karen Tapscott
Mary Tatum
R.W. Tatum, Jr.
Bethany Taylor
Caroline Taylor
Charles H. Taylor
Heather H. Taylor
Kay Taylor
Michelle Taylor
Vonnice & Todd Taylor
Team ACE
Dr. & Mrs. Paul
Tesoriere
Pamela Tetro
Margery & Charles
Thacker
Debbie Thacker
Barbara & Dave
Thomas
Dorothy M. Thomas
Judy Thomas
Patricia Thomas
Amy Thompson
Ava Thompson
Betty Thompson
Heather Thompson
Jason B. Thompson
Jo Ellen Thornton
Patrick Thornton

Sandra & Jim Thornton
Library/Learning
Commons PLC
Missy Tierney
Catherine Tillack
Barbara Tilley
Anne Timberlake
Bea Timberlake
Melanie Timmerman
Cassidy Tinnell
Pamela & Thomas
Tinsley
Jacqueline J. Tirrell
Ellen & Harris Tobias
Alisande Tombarge
Branka & Danny Tomic
Marta & Ryan Tomic
Susan Towe
JJ Towler
Terry & Harrison
Townes
Anu Townsend
Gary Townsend
Krista Townsend
Deborah A. Triant
Nathaniel and Rachel
Tricker
Linda Trimble
Janice Trogdon
Jennifer A. Trompetter
& Rich Warren
Justin Troutman
Adrian Troy
William Truong
Matthew Tsoy
Beverly & Nelson
Tucker
Sandra & Terry Tucker
Sarah Tudryn
Adrienne Turner &
Steve Johnson
Mickie Turner
Joan Tutan
Kyle and Julia
Umberger
United Way of Greater
Philadelphia & NJ
Barbara Urbanczyk
UVA School of
Continuing &
Professional Studies
Rebecca Van Den

Heuvel & Christopher
Schmitt
Ernetta & Robert Van
Orden
Pamela & Keith
VanDerbeek
Joanna Varrone
Katherine S. Vaughn
Andrea & Charles Vest
Sonja Vicker
Jennifer & John
Vidovich
Ellen & Paul Vieth
Margaret Vincel
Virginia CLE
Aristea Vlavianos
Martin Volaric
Nathan & Rachel
Vrooman
Kathryn Wagamon
Carolyn & William
Wagoner
Sara Wakefield & Josh
Herb
Joyce R. Walker
Pat Walker
Sharon & William
Walker
Martha & J. Gregory
Wall
William P. Wallace
Ernie Walls
Jennifer Walter
Laura Walter
Golde & Paul Walthall
Kelley Walton &
Damon Dabney
Sylvia & Thomas
Walton
Sandra & Roger Walz
Louise & Charles Ward
Mrs. Martha C. Ward
Henry & Debra Warren
Jane Washburn
G. Richard Waterman
Cynthia Watkins
Debra A. Watson
Robin Watson
Melissa & Reid Watts
Waynesboro Exchange
Club
Anne G. Weakley

Cathy Webb
Elise Weber
Lewis Allan Weber
Neva & David Weisman
James Weissman
Maureen Weller
Karen & Greg Wells
Linda J. Wells
Brian and Jeanine
Werner
Lucille Werner
Lorna & Raymond
Werntz, Jr
Kevin Wesolowski
Beverly L. West
June K. West
Mike & Kelly West
Barbara Westbrook
Mildred & Bob
Westbrook
Marc and Rebecca
Wetherhorn
Sherry Whaley
Jean & Michael
Wheelwright
Betty & Dennis White
Judith L. White
Roxanna White
Beth Whitehouse
Oakley Whitehouse
Michelle Whitlock
Catherine Whittington
Kim Wilder & Ron
Rammelkamp
Melissa & Peter Wiley
Cheryl & James
Wilkerson
Leslie Wilkinson
Christine Willard
Paulette Willard
Becky Williams
Cyane Dandridge
Williams
Ethel Williams
J. Page & Peggy
Williams
Jovan Williams
Linda & Robin Williams
Maria K. Williams
Ruth W. Williams
Craig and Barb
Williamson

Susan & John
Williamson
Cathy & Paul Willis
Lloyd & Margaret Willis
Mary Kaye Willis
Dan & Patti Wilson
Grant Wilson
Michiko Wilson
The Wilson Family
Regenia & Shelton
Wine
Charles M. Winkler
Sandra J. Wisco
Rachel Renfro Wist
John & Mary Beth
Witherell
Catherine Wolner
Martha Wood
Merle Wood
Bianca Woodson
Cody Woodson
Edgar O Woodson, Jr.
Leah Woody
Suzanne S. Word
Varley Wrick
Denna Marie & Glenn
Wright
Joice & Don Wright
J.J. Wright
Janice Wright
Judith Wright
Megan Wright
Sadie G. Wright
Wanda Wright
Katilynn Wyatt
William Wylie
Dan & Betsy Yancey
Dick and Jane Yancey
Amy M. Yates
Keri Yelding*
Teresa Yelton
Elizabeth Yost
Brooke Young
Bob & Donna Vicars
Mary Blair Zakaib
Cassandra Zaleski
Diana & Douglas
Zanzot
Jean A. Zearley
Robin Zemmell
Jinyi Zhang
Catherine Zimmerman

Lisa Zimmerman
Vivian & Don
Zimmerman
Ariel Zwelling &
Alexander Wilson

In Kind

Aaron Watson
Photography
Emily Abel
Kathleen Acevedo
Albemarle Estate at
Trump Winery
Lezli & Bennett Alford
Caitlin Allard
Kevin Allen
Kimberly Allen
Kat Alves
Stacey Anderson
Andrea Shirey
Photography
Anonymous
Arley Cakes
Cheryl Atkinson
Arlene Aveno
Azmi Azmi Azmi
Yousef
Anna & Alexander Baer
Baja Bean
Elizabeth Baker
Hildy Baldwin
Winslow Ballew
Lisa Bamford
Coy Barefoot
Lorie & David Barrett
David Bashline
Jeanna & George
Beker Bellas
Laura Belozерco*
Marie Berman
Carolyn & Stephen
Bernstein
Jeffrey Best
Jane Bielefeld
Sharon & Scott Bishop
Tory Blackfoot
Buster Blincoe
Blue Ridge AV and
Lighting, LLC
Blue Ridge Cyclery
Anabel Bowen
Melanie Bowyer

THANK YOU FOR YOUR SUPPORT

Galín & Tara Boyd, Jr.
 Boylan Heights
 Keegan Brads
 Lewis Bragg & Sharon
 Showalter
 Brazos Tacos
 Tricia Brennan
 Pamela Brezinski
 Michie Bright
 Lisa Brook & Sophia
 Bain
 Nicole Brooks
 Greg Brown
 Michael Brown
 Ronald Brunk
 Ellen & Gene
 Bumgardner
 Beth Bunts
 Caroline Burns
 Burtons Grill of
 Charlottesville, LLC
 Jenny Buzan
 Jonathan Cameron
 Betty Sue Camper
 Fran & William Carden
 James Carmichael
 Nancy Fisher &
 Ledford Carpenter, Jr.
 Janice & Shelton
 Cartwright
 Sharon & Larry
 Cavender
 Kathleen Chapman
 Chaps Ice Cream
 Ken Chasin
 Kevin Chung
 Linda Cirenza
 Jessica Clark
 Bryan Close
 Reed Coda
 College H.U.N.K.S
 Shana Collier
 Deborah Collyer
 Anne Colony
 Diana Connolly
 Greg & Kyle Cooper
 Stephanie Corman
 Linda Corwin
 County Waste
 Lindsay Craig
 Michael & Karen Crane

Crazy Horse
 Dawn Crow
 Rebecca Crum
 Custom Management
 Group
 Cville Hop On Tours
 Erin Dallapiazza, VA
 Daughters of Penelope
 Harmonia Ch. #366
 Jessica Daves
 Fred Davidson
 SM Davis
 Ana De Groat
 Louise Dehne
 James Dell
 Deana DeRaimo
 Danielle & Daniel
 Devereux
 Pat Deyoung
 Susan DiGiacomo
 Beverly & Wayne
 Dinnadge
 Patty Dombrowe
 Mario & Johannah
 Dottori
 Richard & Kathy
 Douglas
 Bill Doyle
 Cindy Dragich
 Emily Dreyfus and Neal
 Walters
 Westley Du Pont
 Peggy Duncan-Carter
 Sally Dunn
 Patricia Durrer
 Robin Eastham
 Alexes Echols
 Linda Edenfield
 Edmondson Family
 Robin Edwards
 Cathy & Larry Eichelberger
 Restaurant
 Marilyn Ellinger
 Linda Elsey
 Sandra Emery
 E. Rebeca English
 Kendall V. Erb
 Erin McDermott
 Jewelry
 William Eskridge

The Estate of James
 Hahn
 Estate of Margaret
 Wilkins
 Sarah Esterhay
 Cheryl Evans
 Randy Fama
 Cynthia Fargo
 Linda Faust
 Rebecca Feild
 Mitch Feldman
 Susan W. Fenn
 Babette & Greb
 Fernandez
 Freida Fife
 Cynthia Fletcher
 Linda Fontaine
 Mary Forbes
 Karen & Doug Forsman
 Clint Foster
 Dennis & Lesley Foster
 Beth & Charles D.
 Fox IV
 Holly Frasier
 Fry's Spring Station
 Robert Fulton
 Gary Funston
 Sylvia & Michael Gage
 Frank Gallo
 Maggie & Richard
 Gangloff
 Shirley Gardner
 Myriah & John
 Garland
 Cheryl Gaughe,
 Virginia General
 Dynamics SRI
 Giant Food
 Chris Glenn
 Luanne Goldrich
 Amanda Gomaa
 Robin Goodall &
 Robert Waite, Jr.
 Amanda Goodman
 John Gormus
 Alex & Anne Gould
 Lynn Govoruhk
 Maureen Graham
 Danny Gray
 Terry Green
 Erik Greenbaum

Greer Elementary
 School
 Sharon Gregory
 Janie & Philip
 Grussing
 Stacey Guthiel
 Catherine Guy
 Jordan Hackworth
 Darien & Andrew Hall
 Halo Salt Spa
 Lynn Auld Hamilton
 Shirley Hamm
 Frances Hardey
 Kimmie Harlow
 William S. Harlow
 Harvest Moon
 Catering
 Cynthia Hash
 Thomas & Sharon
 Hauff
 Joanne Hayden
 Marlit Hayslett
 Rosemary Heflin
 John Heinbokel
 Deborah Heller
 HemoShear
 Therapeutics
 Heritage Hospitality
 Janet Herman &
 Jeffrey Sitler
 Bruce Herring
 Monte & Deborah
 Hickman
 Maureen Hirts
 Alice Hodges
 Holistic Animal
 Bodywork &
 Therapies
 Anne & Duane
 Hopper
 Constance Houchens
 Tom Hoyt
 Karleen Hubley
 Susan Hudson
 The Hughes Family
 Timothy Hughes
 Carla & Marshall Hunt
 Hal Hurka
 Kenneth A.
 Hutchinson
 Mark Ilsemann

George Inge
 Bill Irvin
 Ivy Provisions
 Barb & Steven Janes
 Neil Janis
 Jean Theory
 Lorne Jean
 Jenny Jeffress
 Jimmy John's
 Papa John's
 Jeff Johnson
 Alice Justice
 Janine Kaestner
 Eric & Harriet Kaplan
 Kristina Karr
 Mona Kasra
 Joyce Kaswandik
 Katherine Soderman
 & Bryan Anderson
 Keller & George
 Jewelers
 Mary & George Kelly
 Lorraine Kendrick
 Teri Kent
 Keswick Hall & Golf
 Club
 Deborah Kidd
 Kathryn Kim
 Adelaide King
 Juliet & John
 Kingsley
 Chris Kirtley
 Susan Klug
 Ann Kolar
 Mike Konopatsky &
 Judith Minter
 Barbara Kramer
 Marci Kramer &
 Daniel Koller
 Christopher Kremer
 Mike Kroboth
 Andrew Krochak
 Kelly & Sarah
 Kyriacopoulos
 Marcia LaFleur
 Diane Lambert
 Cathy Lawder
 Lone Lee
 Frances Lee-Vandell
 Brooke Lehmann
 Thomas E. Leland

Stacey Liljegren
 Sean Lineweaver
 Live Arts
 Alex Logan
 Joel Lothamer
 Patty Luke
 Anita Gail Lundry
 Emilyann Lyons
 Tom Magno
 Cynthia Maisannes
 Marjolaine Nadeau
 Marianella
 Marie Bette Cafe &
 Bakery
 Carol Mariscal
 James & Mary
 Marshall
 Tracy Marshall
 Alfonso Martinez
 WL & Novella
 Mawyer
 MaryAnn Mazzola
 Lenora & Gregory
 McAllister
 Carol McCabe
 Grier McCain
 Carla & Mark
 McCardell
 Thomas McCormick
 Cathryn McCue
 Nancy McCue
 Amelia McCulley
 Theresa & Mark
 McCullough
 Ava McDonough
 Molly McElwee
 Alex McGee
 Donna McGrath
 John McGrath
 Gretchen & Michael
 McKee
 K. McLaughlin
 Beth & Ponch
 McPhee
 Terri Mead
 Autumn Meadows
 Terri Meeks
 Mellow Mushroom
 Mezeh Charlottesville
 Jacqueline Miller
 Lloyd Miller
 Lynn and Jan Miller

Joyce Mills
 Elizabeth T. Milton
 Anna Minutella
 Miso Sweet
 Stephanie Mitchell
 Moe's BBQ
 Carl D. Moje
 M. Parthenia
 Monagan
 Monkee's of
 Charlottesville
 Mono Loco
 Kathy Morton
 Karen Moulis
 Susan & John Mugler
 Rebecca Muller
 Grace Muro
 Kelly Myles
 Jessica W. Nagle
 Jayme & Derek Naughton
 NBC 29
 Neroli Spa
 Dan Newton
 Van H. Nguyen
 Nicole Elliott
 Photography
 Mhia Niederman
 Keith Nonnenmacher
 Lori Norris
 Michael Norton
 Blaine Norum
 Lindsey Oberg
 Trish Ohlschlager
 Cynthia K. Olinger
 Lucille B. Oliver
 Casey Opitz
 Louise O'Rourke
 Orzo Kitchen & Wine
 Bar, Inc.
 Karen Oxenham
 Leslie Pack
 Katherine Parker
 Ann & Phillip Parrish
 Kristen Pavey
 Payne Ross &
 Associates
 Lois G. Pearcy
 Kaki & Ted Pearson
 Elizabeth Pennell
 Yoshie Perez
 Howell W. Perkins

Tim Perrow
 Nicole Personette
 Pet Supplies Plus
 Janice & Steven
 Pfund
 Pippin Hill Farm &
 Vineyard
 Lynn Pontillo
 Janet & Avrom
 Posner
 Posture Studio
 Pilates
 Sherry Prestwich
 Pure Barre
 Charlottesville
 PVCC Brony Club
 Elizabeth P. Pyle
 Valerie Race
 David Rae
 Nancy Rae
 Susan & Kyle Rannigan
 Kaye Rasmussen
 Benjamin C. Ray
 Darlene Rea
 Reddy Ice
 Kathryn Reddy
 Donna Rehorn
 Lynne A. Reigel
 Bridget Reiser
 Dina & Terance J.
 Rephann
 George Reynolds
 Stephanie & Michael
 Reynolds
 Melissa Richardson
 Melissa L. Riddle
 Joan Ripley
 Shelley Robbins
 Elizabeth Roberts
 Jenny Robinson
 Rock Paper Scissors
 Antonio Rodriguez
 Deborah Romano
 Debbie Rushing
 Cheryl Russell
 Robert Ryder
 Joshua Sacks
 Diana & Jim Salmon
 Nate Sander, VA
 SCARPA
 Dean Schott

Eve & Herman
 Schwartz
 Joyce Scuffham
 Beatrice M. Segal
 Jane & John Sellers
 Jen Shanks
 Nancy J. Sherman
 Steve Sherman
 Beth Shimman
 Erica Shortridge
 Signature Medical
 Spa
 Elaine Silburn
 Marcia A. Silvermetz
 Sallie & A. Ward Sims
 Kathryn Skinner
 Sarah Smedley
 Jennifer Smith
 Michelle Smith
 Marguerite Soule
 Southern Crescent
 Charlotte Gail
 Spencer
 Sprint Pavilion
 Heather St. Armand
 Jeanne E.
 Stanborough
 Todd Starbuck
 Kim Starr
 Joy & David Steel
 Denise Stephens
 Loretta Stephens
 Taylor Stephens
 Rebecca Sterne
 Shelly Stinchcomb
 Philip and Lori
 Strauss
 Estate of Courtney
 Sugerman
 Sun Tan City
 Susan & William
 Swaine
 T&N Printing
 Sheila Tate
 June Tate
 Harry Taylor
 Xavier Taylor
 Fred Telegdy
 The Fitzroy
 Polly & Tom
 Thompson
 Nancy Tisdale

Top Knot Studio
 Tractor Supply -
 Charlottesville
 Tractor Supply -
 Ruckersville
 Triple C Camp
 Anna Troutman
 Evelyn & Roy
 Trucksess
 University of Virginia
 Athletics
 Department
 Harry Van Every
 Margaret vanEkeren
 Chip Vasi & Cynthia
 Orshek
 Nancy & Kurt Vetter
 Joanne Via
 The Virginia Shop
 Suzanne Trendel
 Faris Wallenborn
 Carla Walter
 Walmart
 Susan Ward
 Christopher
 Washington
 Water St. Restaurant
 Sally Watson
 Jacqueline Webber
 Peggy Wharam
 Crystal Whitaker
 Leanna Whitmore
 Whole Foods Market
 Sanford & Janice P.
 Wilcox
 Mary Ann & Allen
 Williams
 Roberta Williams
 R. Willingham
 Rise & Adam Wilson
 Mary Wingerd
 Andrea Wood
 Jeff Wood
 Wanda Wood
 Charles Woolheater
 Sarah Yarney
 Amy P. Yates
 Yellow Cardinal
 Gallery
 Michelle Zagardo
 Margaret & Richard
 Zakin
 Victor Zaydfudim



THANKS TO SUPPORTERS LIKE YOU, WE ARE
ABLE TO OFFER A BRIGHTER FUTURE
TO THE ANIMALS WE LOVE!

IN 2016,

2,444

ANIMALS BECAME
PART OF A
LOVING FAMILY