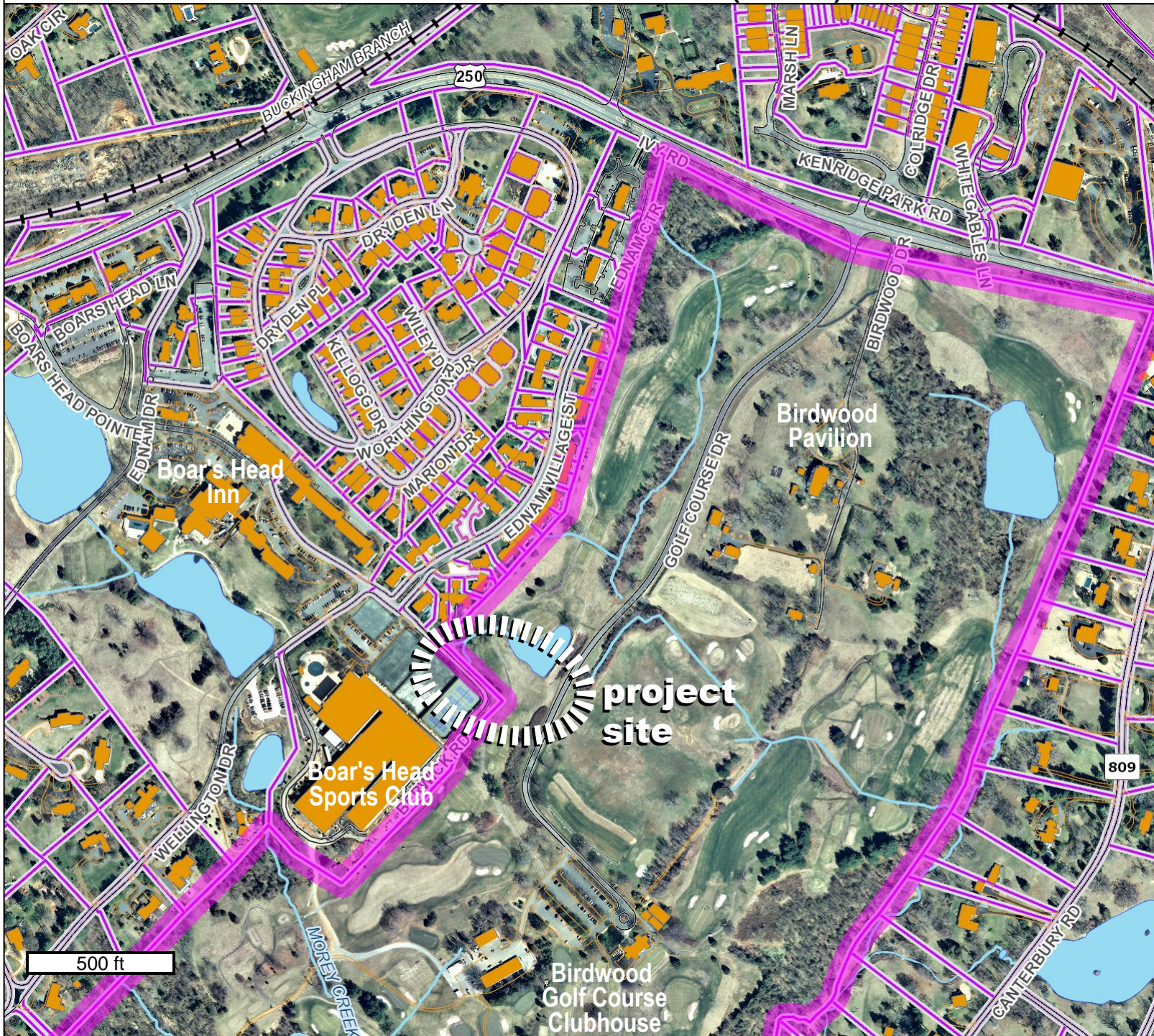


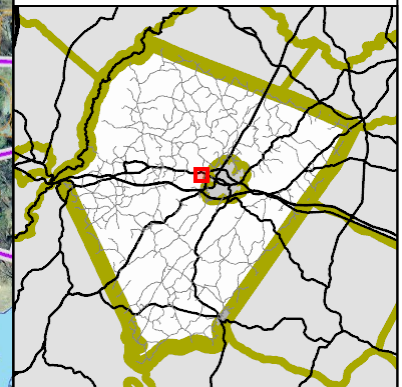
# Birdwood (1"=500')



## Legend

(Note: Some items on map may not appear in legend)

- Points of Interest
  - AIRPORT
  - COLLEGE/UNIVERSITY
  - COMMUNITY
  - FIRE/RESCUE STATION
  - GOVERNMENT
  - HOSPITAL
  - LIBRARY
  - POLICE STATION
  - POST OFFICE
  - RECREATION/TOURISM
  - SCHOOL
- Parcel Info
  - Parcels



GIS-Web  
Geographic Data Services  
[www.albemarle.org](http://www.albemarle.org)  
(434) 296-5832