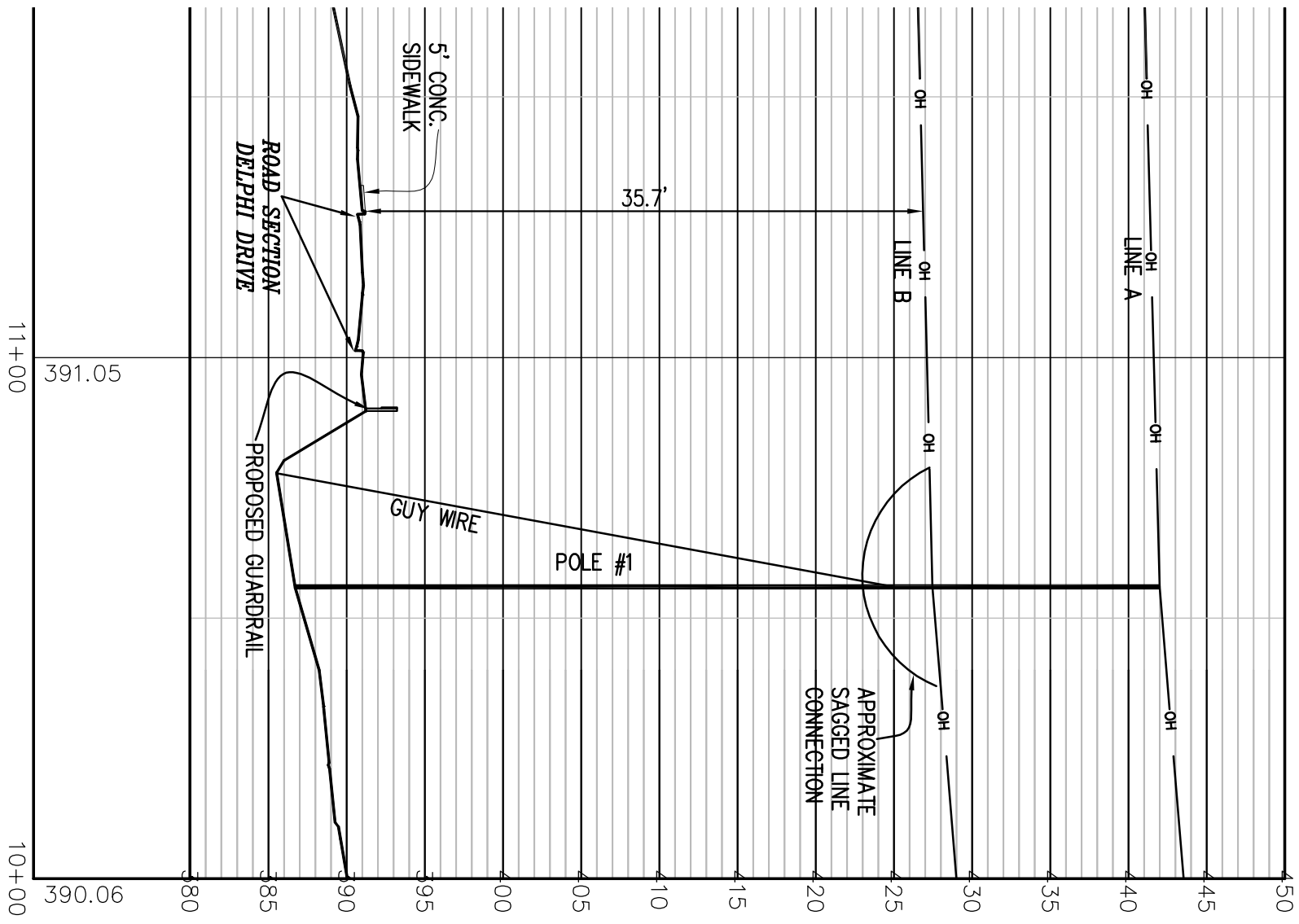
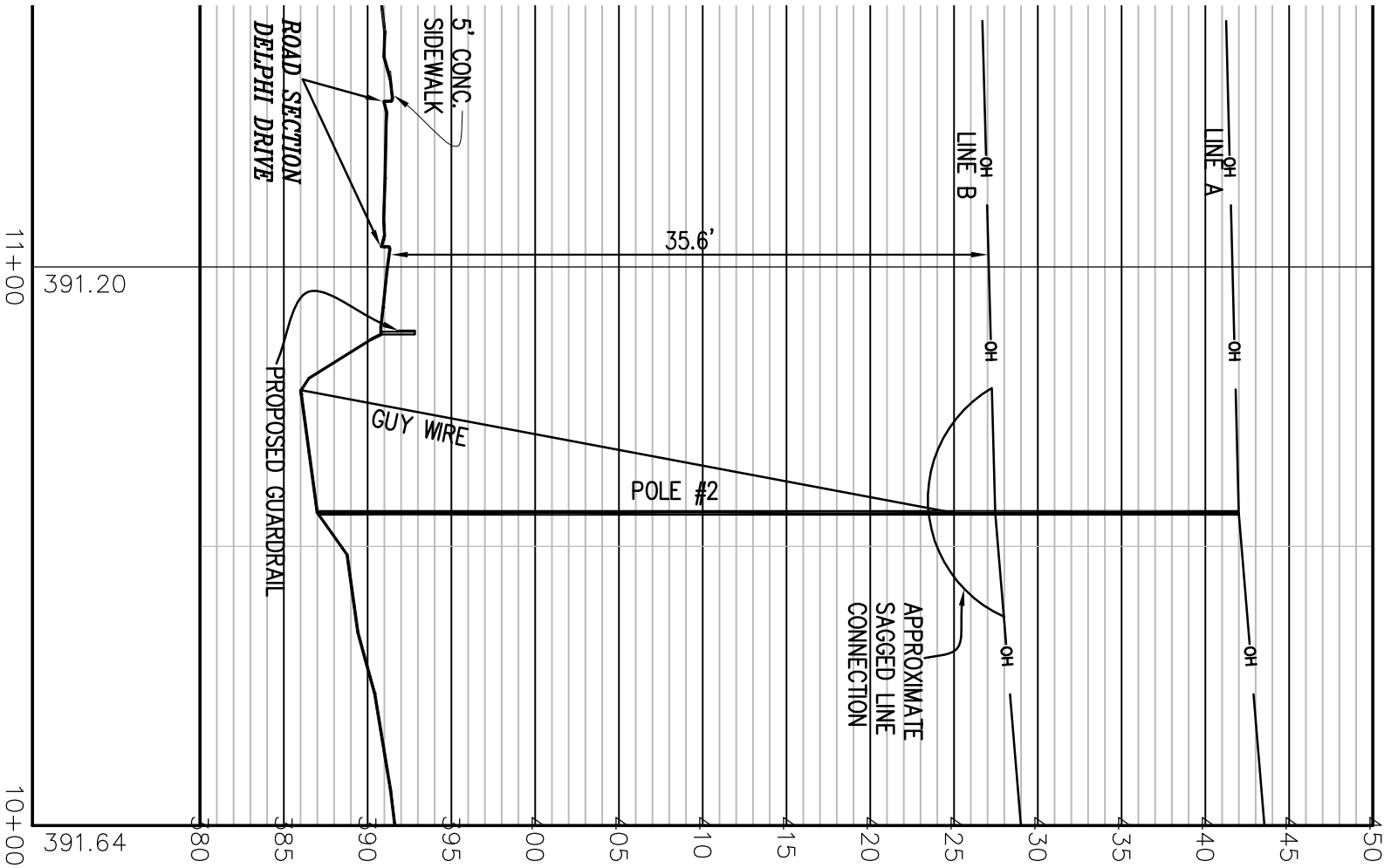


POLE LINE A Profile
Horiz. Scale: 1"=30'
Vertical Scale: 1"=10'

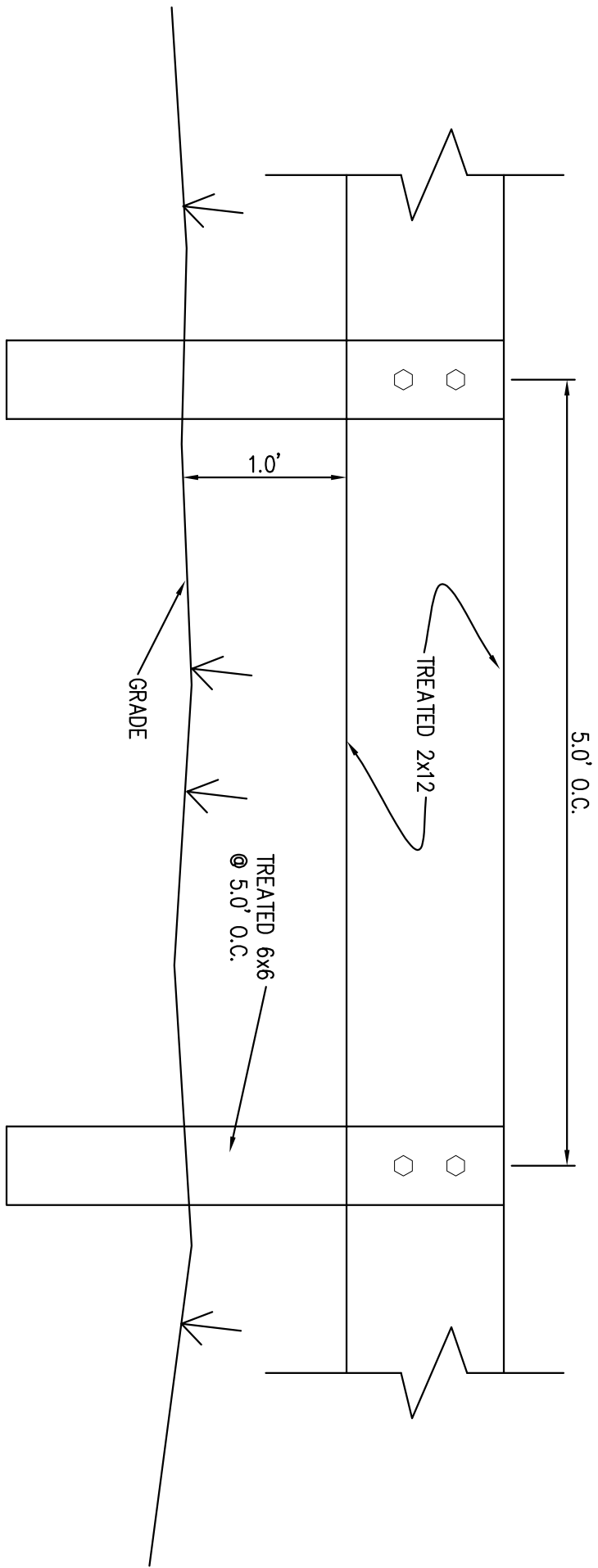
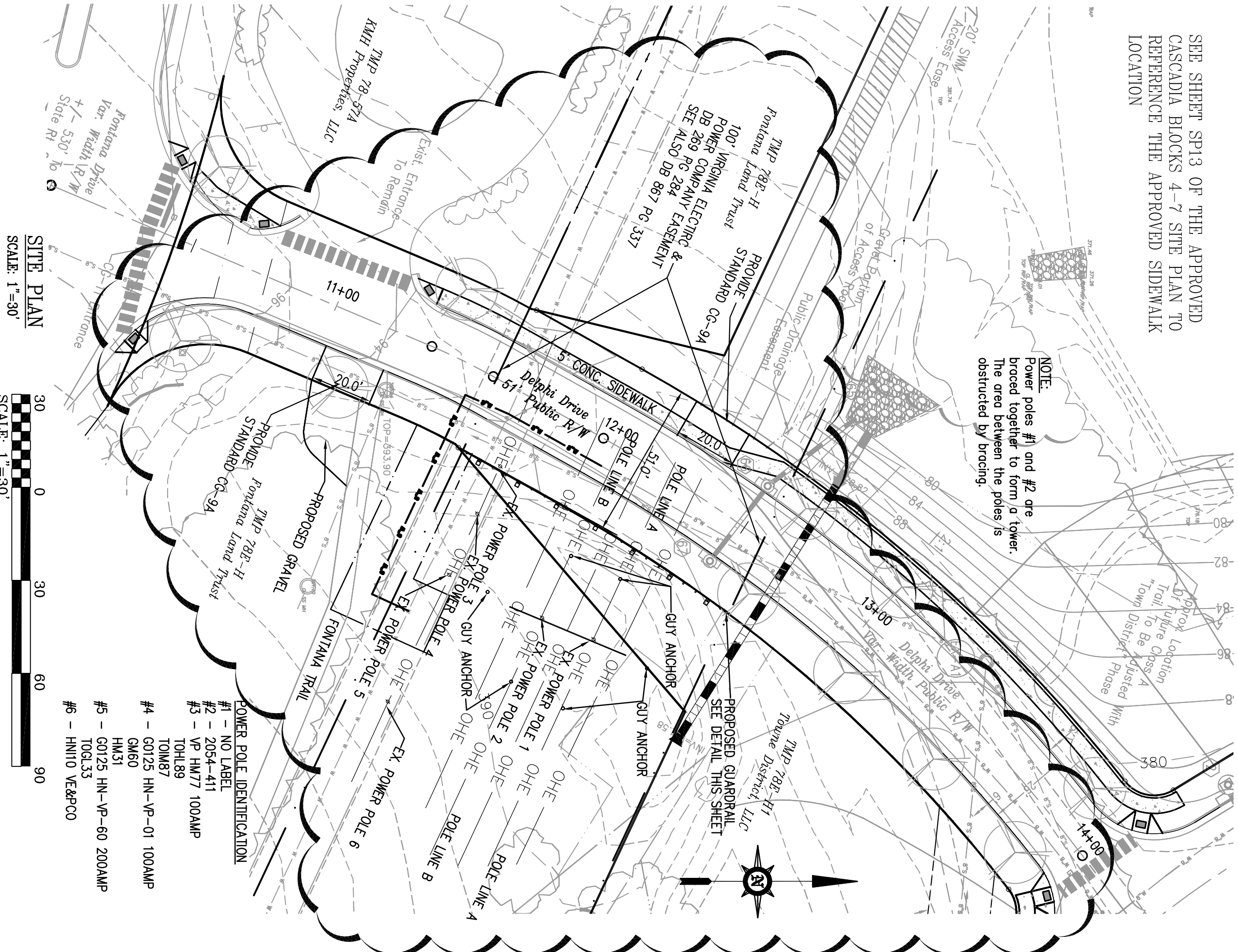


POLE LINE B Profile
Horiz. Scale: 1"=30'
Vertical Scale: 1"=10'

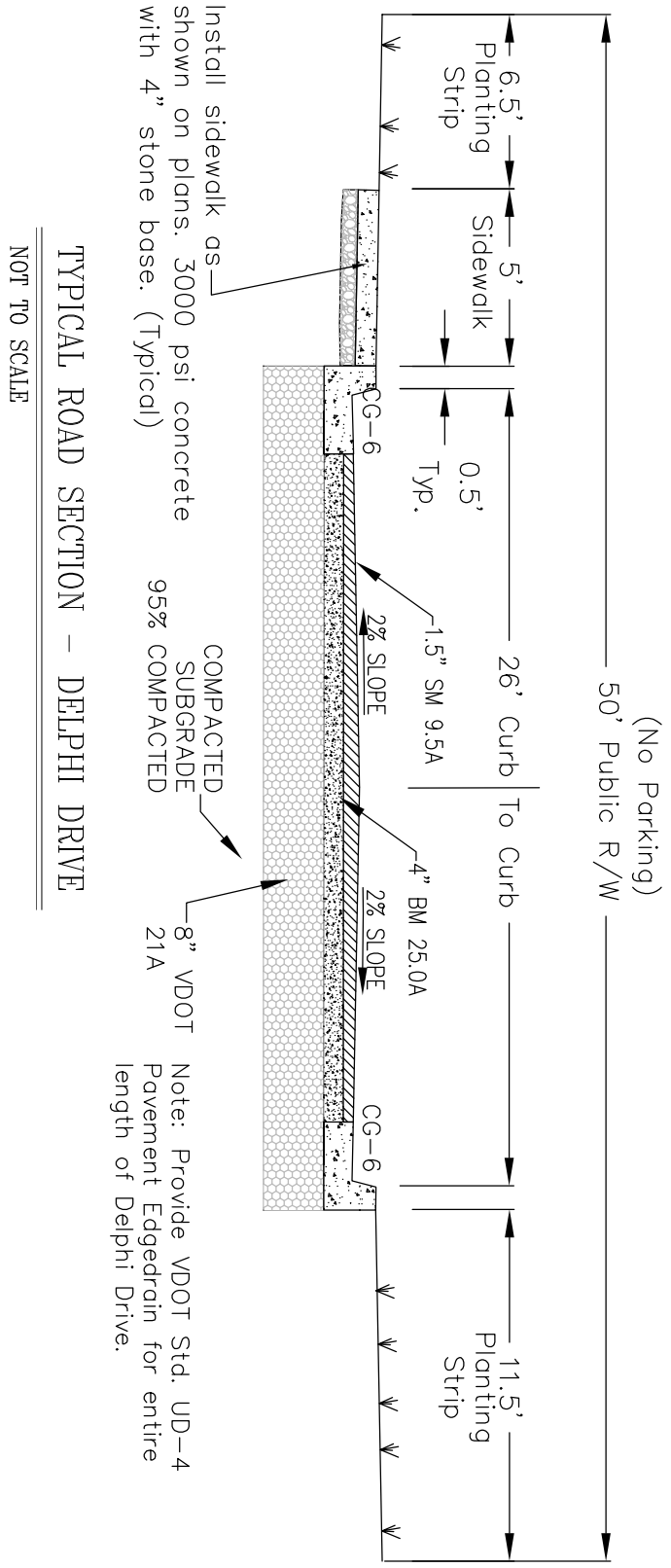


SEE SHEET SP13 OF THE APPROVED
CASCADIA BLOCKS 4-7 SITE PLAN TO
REFERENCE THE APPROVED SIDEWALK
LOCATION

NOTE:
Power poles #1 and #2 are
braced together to form a tower.
The area between the poles is
obstructed by broom.



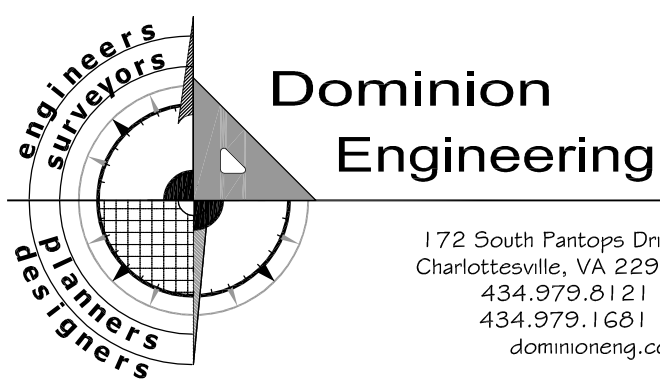
GUARDRAIL DETAIL
SCALE: N.T.S.



TYPICAL ROAD SECTION - DELPHI DRIVE
NOT TO SCALE

Letter of Revision #1 Narrative

Based on coordination with Dominion Power and Albemarle County, the purpose of this letter of revision is to address Dominion Power concerns relative to the encroachment of Delphi Drive through their 100' right-of-way. The plan proposes that approximately 350-LF of 5'-wide concrete sidewalk on the east side of Delphi Drive be removed as shown on the plan. A wooden guardrail is also to be proposed within the 100' Dominion Power easement just off the edge of the VDOT right-of-way for safety purposes. The guardrail is to be maintained by the homeowner's Association. The purpose of the removal of sidewalk is to minimize potential conflicts with future guy wire/pole relocation.



REVISIONS			REVISIONS		
NO.	DESCRIPTION	DATE	NO.	DESCRIPTION	DATE
1	COUNTY COMMENTS	08/26/18			
2	VDOT COMMENTS	08/16/18			
FILE NAME: 12.0065-CASCADIA-4-7-LOR 1.DWG			SCALE: As Shown		
			DESIGNED BY: ARC		
			DRAWN BY: ARC		
			CHECKED BY: MFM		

LETTER OF REVISION 1 FOR CASCADIA - BLOCKS 4-7 RIVANNA DISTRICT, ALBEMARLE COUNTY, VA	
SHEET TITLE: SITE PLAN AND PROFILES	
DOM. PROJECT NO:12.0065	
INDEX TITLE: LOR1	
SHEET NO: 1 of 1	
DATE: 08/03/16	