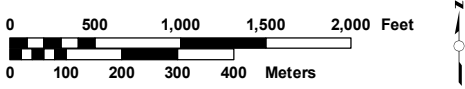


Notes on Data Sources:

The elevation surface used in the viewshed analysis was derived from LiDAR data flown in late 2015. This accounts for the height of buildings and vegetation at the date of acquisition.

The land cover data used to identify tree canopy is from the Virginia statewide land cover dataset created by Worldview and organized by VGIN. In Albemarle County, aerial photos from 2013 were used in the land cover classification.



Prepared by Albemarle County
Division of Information Services
Map created by Andy Slack: 6/3/2022

Note: The map elements depicted are graphic representations and are not to be construed or used as a legal description.
This map is for display purposes only.

Parcels shown reflect plats and deeds recorded through December 31, 2021

Document Path: F:\GDS Staff\WorkingFiles\Viewshed\Bill Fritz\Tower_Viewshed_template_hillshade_6_02_22.mxd

Tower Visibility, Parcel 55 - 14

Tower

Tower Buffer (1 Mile)

Albemarle Boundary

Parcels

Buildings

Driveways

Roads

Streams

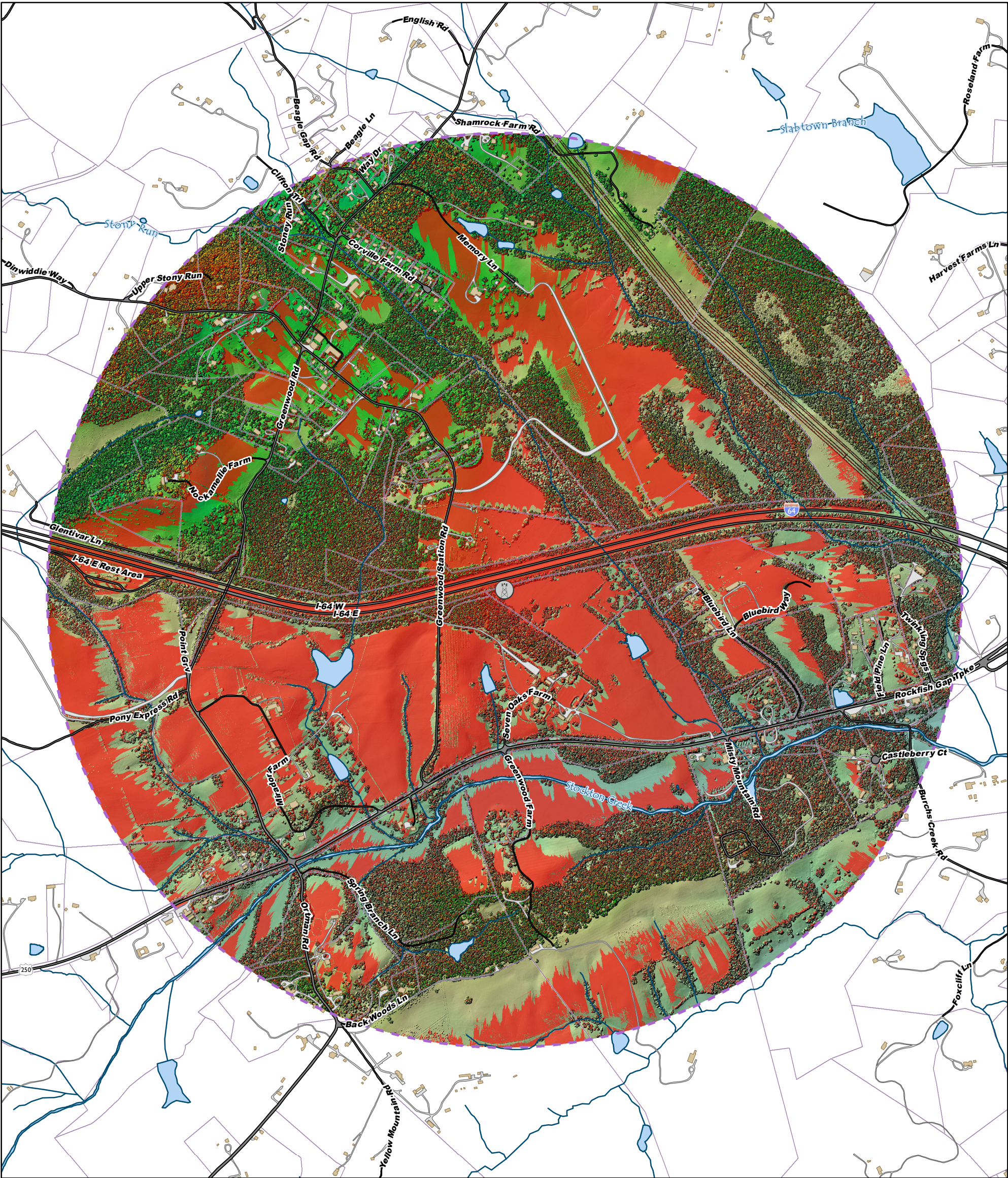
Water Bodies

Tree Canopy

Tower Visible

Surface Elevation

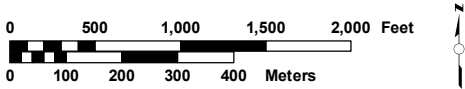
Highest Lowest



Notes on Data Sources:

The elevation surface used in the viewshed analysis was derived from LiDAR data flown in late 2015. This accounts for the height of buildings and vegetation at the date of acquisition.

The land cover data used to identify tree canopy is from the Virginia statewide land cover dataset created by Worldview and organized by VGIN. In Albemarle County, aerial photos from 2013 were used in the land cover classification.



Prepared by Albemarle County
Division of Information Services
Map created by Andy Slack: 6/3/2022

Note: The map elements depicted are graphic representations and are not to be construed or used as a legal description.
This map is for display purposes only.

Parcels shown reflect plats and deeds recorded through December 31, 2021

Document Path: F:\GDS Staff\WorkingFiles\Viewshed\Bill Fritz\Tower_Viewshed_template_hillshade_6_02_22.mxd

Tower Visibility, Parcel 55 - 14

