

Albemarle – Charlottesville Regional Jail Presentation to Albemarle County Board of Supervisors

Charlottesville, Virginia

October 20, 2021



INTRODUCTIONS

MARTIN KUMER, SUPERINTENDENT ACRJ

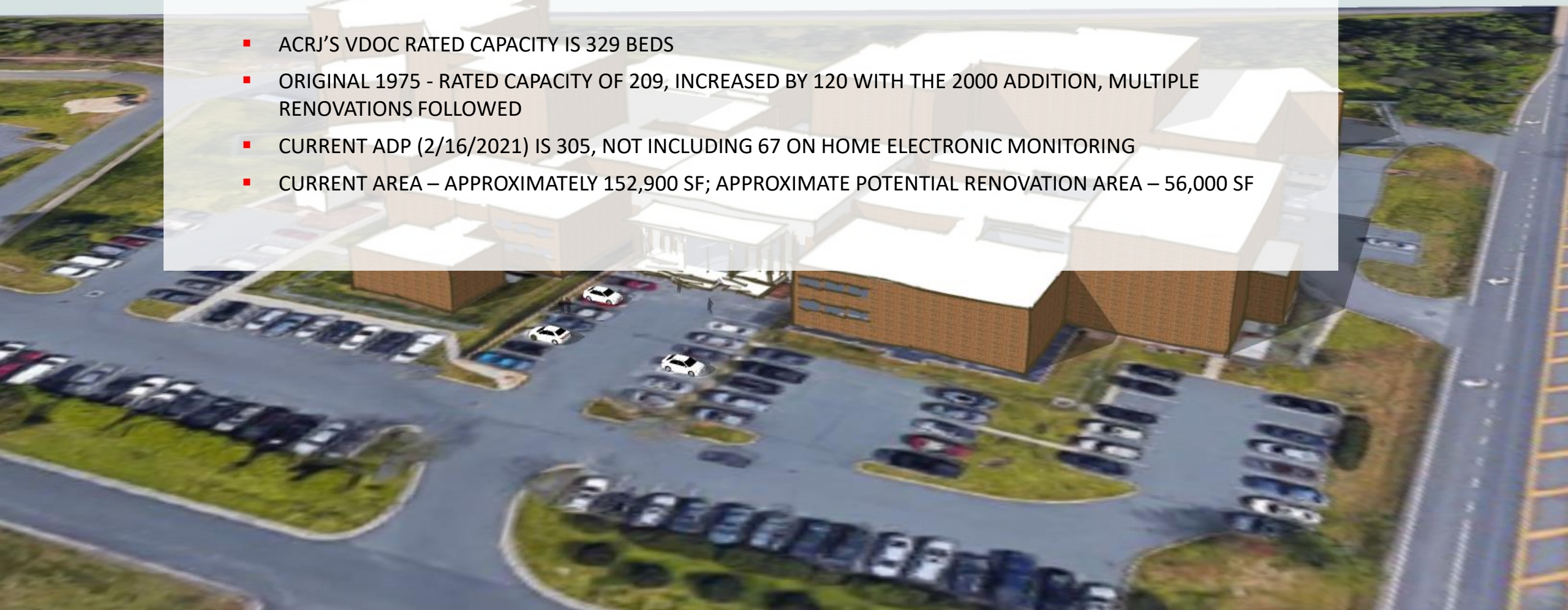
TONY BELL, MOSELEY ARCHITECTS

CHRIS ROMAN, MOSELEY ARCHITECTS



ACRJ FACILITY FACTS

- ACRJ'S VDOC RATED CAPACITY IS 329 BEDS
- ORIGINAL 1975 - RATED CAPACITY OF 209, INCREASED BY 120 WITH THE 2000 ADDITION, MULTIPLE RENOVATIONS FOLLOWED
- CURRENT ADP (2/16/2021) IS 305, NOT INCLUDING 67 ON HOME ELECTRONIC MONITORING
- CURRENT AREA – APPROXIMATELY 152,900 SF; APPROXIMATE POTENTIAL RENOVATION AREA – 56,000 SF



ANTICIPATED SCHEDULE

Project Planning, Design, and Construction Schedule

- Prepare/Submit Community-Based Corrections Plan Planning Study December 31, 2021
- Authority meetings about project and approval of project January - April, 2022
- Resolution from Authority members to BLRJ May 1, 2022
- BLRJ Approval CBCP Needs Assessment May, 2022
- BLRJ Approval of CBCP Planning Study July-August, 2022
- Application to Treasury Board for bonds for reimbursement June, 2022
- DOC submits to Department of Planning and Budget Sept-Oct, 2022
- Receive Governor approval for funding and inclusion in the budget bill December 1, 2022
- Receive Legislative approval (Legislative session) June, 2023



ANTICIPATED SCHEDULE

Project Planning, Design, and Construction Schedule

- Advertise RFP and Select A/E December 2021 - June, 2023
- Receive Legislative approval (Legislative session) June, 2023
- Award A/E Contract and Design NTP (or earlier at risk) June, 2023
- VDOC required Value Engineering on Design November, 2023
- Complete Construction Documents/secure County design approvals March, 2024
- Advertise for bids May, 2024
- Receive Bids May, 2024
- Negotiate Contract August, 2024
- Notice to Proceed (Construction) August, 2024
- Substantially Complete construction (14 months – to be confirmed) October, 2025
- Final Completion of project November, 2025



COMMUNITY INPUT

Building Exterior

- No bike rack
- More visitor parking
- Improvement to the handicap ramp
- Outdoor recreational space/green space
- More ADA-compliant building access
- Community garden for the inmates to tend
- Better way-finding signage for building access
- Move Magistrate building elsewhere so it's not part of jail facility
- Space for dog-training program

Inmate Amenities

- Tablets for visitation good thing but return to in-person visits when possible
- More toiletries
- Programs to change life trajectory – re-entry support
- More time to go outside for fresh air and sun
- More bottom bunks for those with mobility challenges
- More telephones in areas that are separate by gender
- Space for dog-training program

Building Interior

- Improve maintenance
- Mold
- Insects (cockroaches)
- Crumbling paint
- Poor air quality/HVAC
- HVAC too loud in the gym
- Inconsistent water temperature and mold in the showers
- Leaking toilets and ceilings
- Better usage of unused and current space
- Don't want more beds
- ADA-compliant housing, showers
- More privacy in women's showers
- Install shelves
- Larger classrooms with technology for virtual training
- More technology in each classroom
- Each inmate have an IPAD for coursework
- TV/DVD player
- Projector
- Smartboard
- Intercom button in each classroom
- Space for artistic expression (dance, art)
- Space for dog-training program



COMMUNITY INPUT

Building Interior

- Better monitoring of areas where visitors offer programs/training so they can feel safe
- More space to place disruptive inmates so whole unit isn't locked down
- Improve public bathrooms – “5 points above gas station bathrooms”
- Larger units or fewer inmates in the cells
- Adequate space for counseling those with substance abuse/mental illness
- Use jail for more violent offenders
- Resource room/library
- Exposed nails in older sections that caused injury
- Emergency buttons in cells or the units accessible to inmates
- Use lobby 2 area which is currently closed off
- More visitation areas
- More observation by staff of the inmates and other blind spots
- More humane environment (less noise, carpet, paint choices, etc.)
- Less depressing
- Improve medical care space
- More flexible space for multi-purpose (accordion walls for certain rooms)
- Privacy area for phone calls
- Room dedicated to multifaith prayers
- Virtual receptionist
- Better visitor locker system
- Obscure classroom windows to minimize distractions – 2way mirror
- More indoor recreation, art)
- Family visitation rooms
- Remove the bars – replace with plexiglass or other comparable material
- More open space in social areas with natural lighting
- Remove glass partitions
- Space for dog-training program

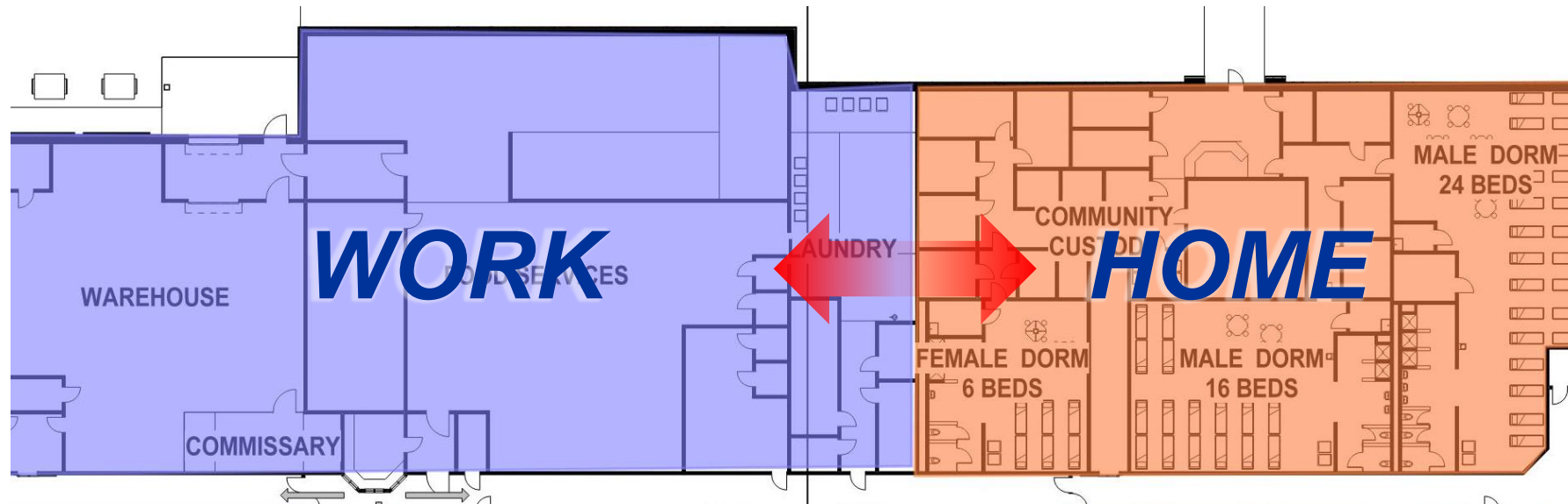


TRAUMA INFORMED DESIGN

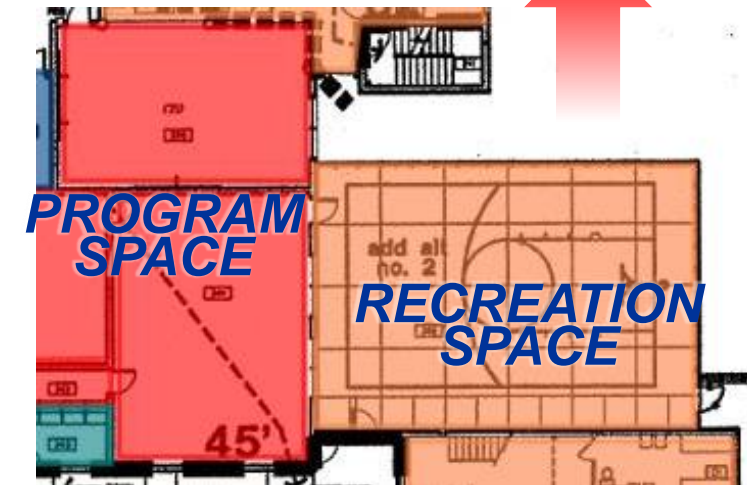
Trauma informed design acknowledges and assumes that individuals being served are more likely than not to have a history of trauma in their lives **AND** provides an environment that reduces the likelihood of exacerbating trauma-related symptoms.



- Allow detainees to replicate patterns of daily life, such as getting up and “going to work” in another part of the building and then “coming home” to their units at the end of the day.



- Provide ample space for recreation and programs so that detainees will have opportunities to successfully practice navigating daily routines in a structured environment.

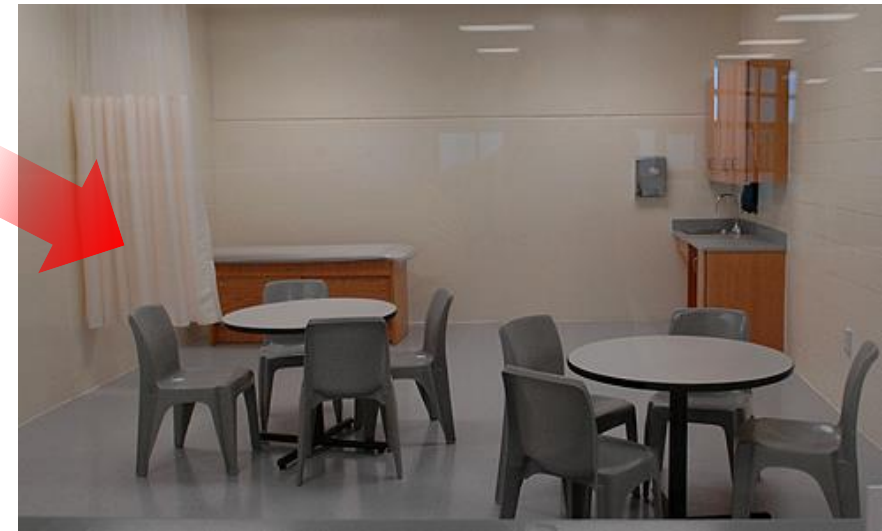
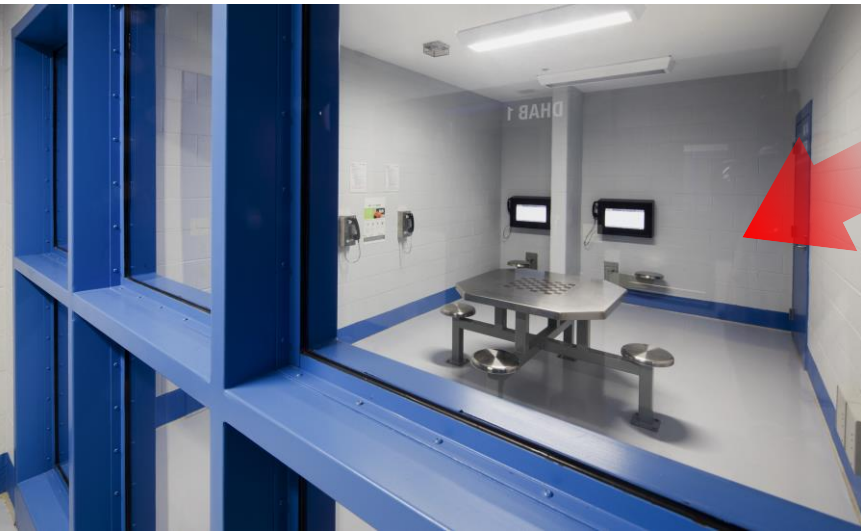
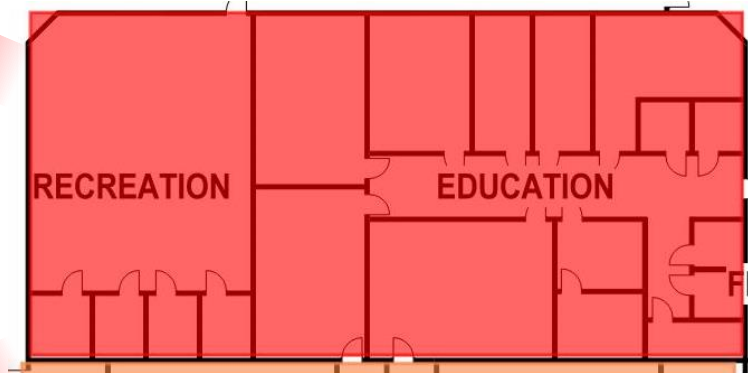




- Increased connection to nature and natural light, as well as views to the outdoors while maintaining security requirements appropriate to the facility's mission.



- Reduce the HVAC background noise and reduce the reverberation caused by hard surfaces.

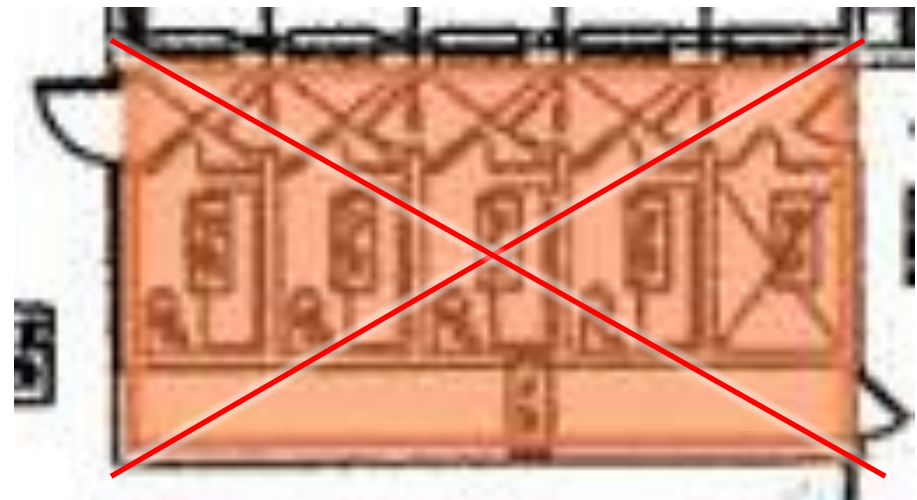


- Provide areas of different size that are available for varying levels of social engagement.

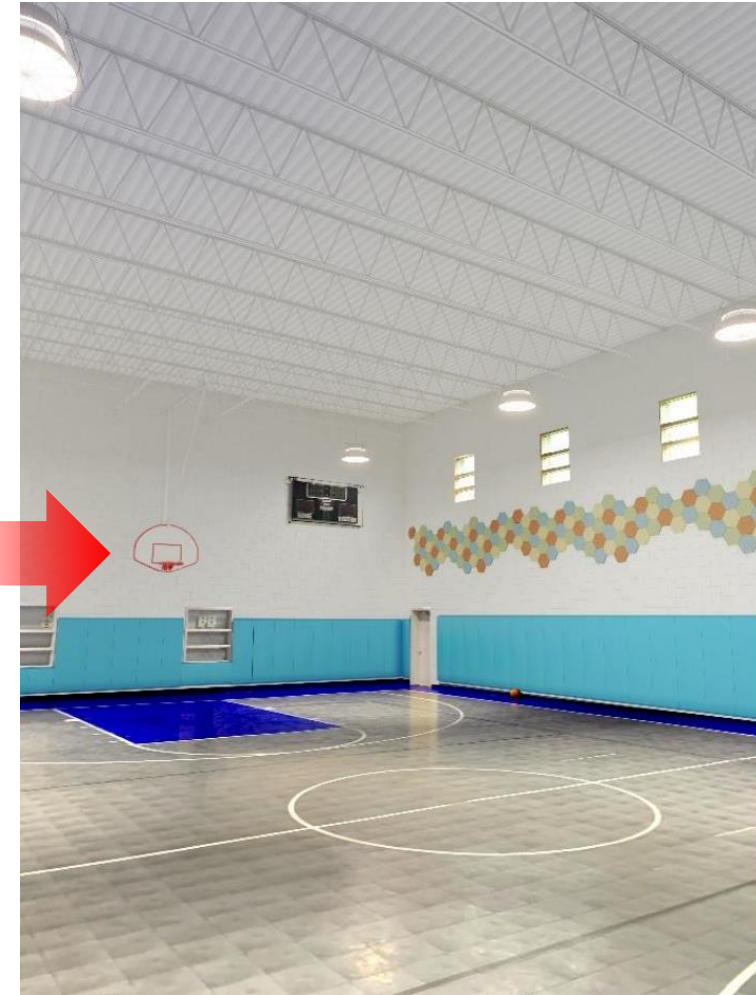




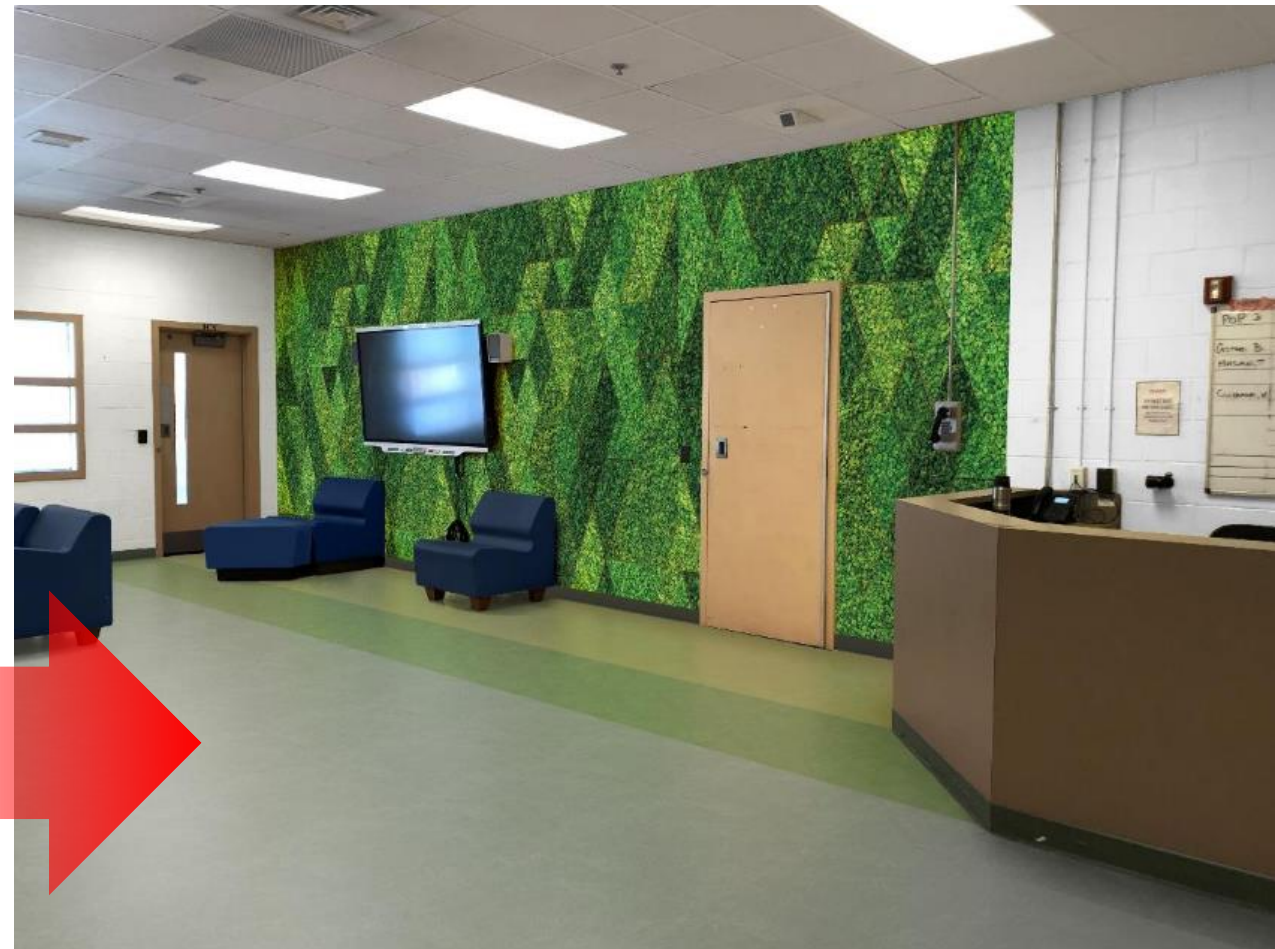
- Provide sufficient space and resources for detainees to refocus on their own mental health and provide humane segregation spaces.



- Use colors and patterns that are visually appealing, are calming, and not overly stimulating, typically in cooler hues.



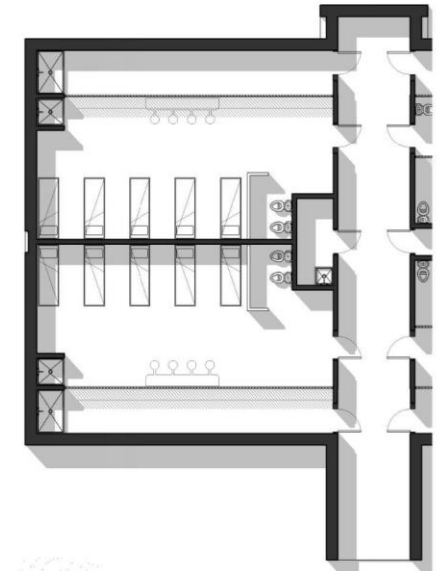
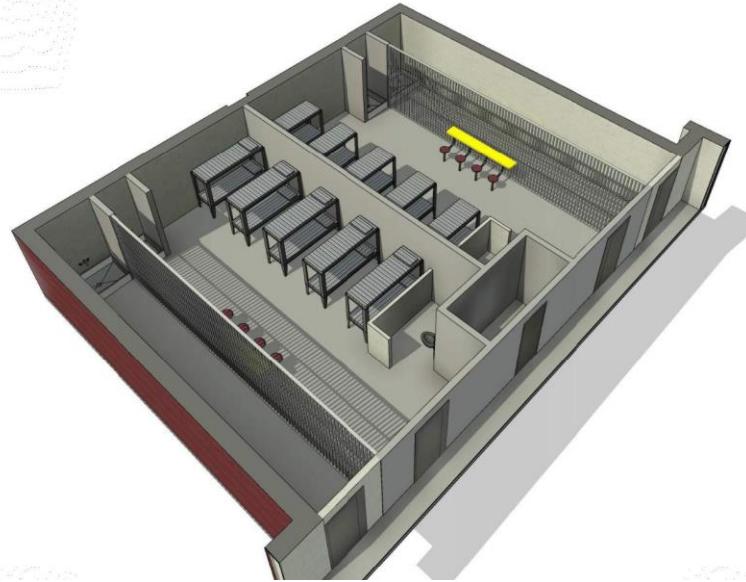
- Exposure to large format images of nature and access to nature, even if presented as artwork, has been shown to produce positive health outcomes for people in indoor environments.



DAYROOM IMPROVEMENTS

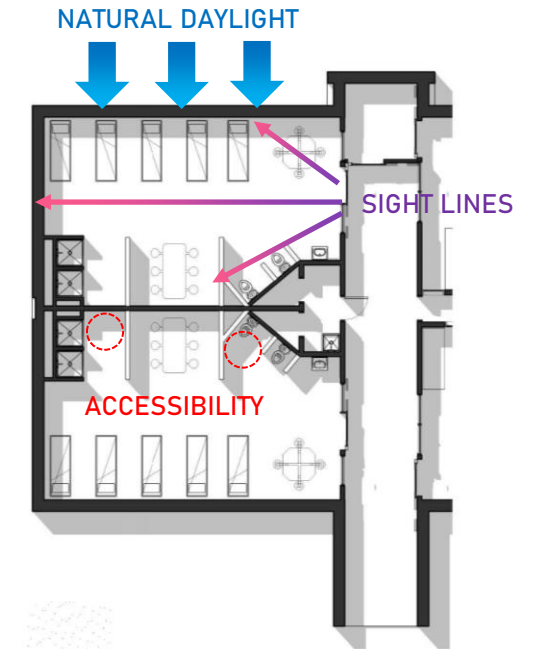
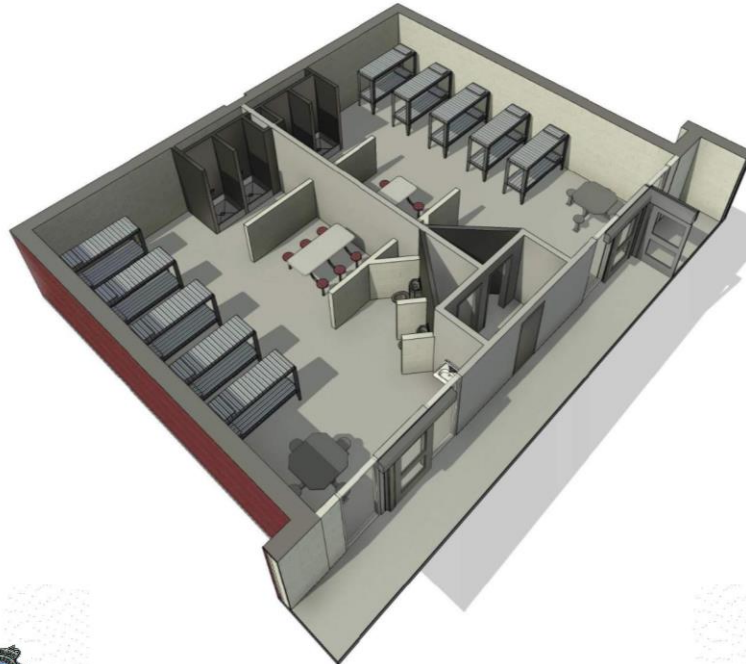
EXISTING DORM LAYOUT

- POOR SIGHT LINES
- NO ADA COMPLIANCE
- INSUFFICIENT DINING SPACE
- POOR DRAINAGE
- INSUFFICIENT DAYROOM SPACE
- SUBSTANDARD FIXTURES
- NATURAL DAYLIGHT LIMITED



DORM RECONFIGURATION

- IMPROVED SIGHT LINES
- ADA COMPLIANT
- SALLYPORT
- SUFFICIENT DINING SPACE
- IMPROVED STAFF AND INMATE SAFETY
- MORE GLAZING
- NATURAL DAYLIGHT MAXIMIZED



REIMAGINING DETENTION

- Replace bar grate and bar grate sliders with solid partitions and doors with glass clad polycarbonate
- Replace original mechanical and electrical systems of 1975 Jail; HVAC system no longer effectively heat, cool, or control humidity
- Replace original louver style with bars with glass clad polycarbonate
- Provide more programming and recreation space
- Replace toilets and showers with more efficient, better-quality fixtures
- Provide more purpose-built space; except for inmate housing many spaces are currently re-purposed
- Upgrade mental health and segregation housing



REIMAGINING DETENTION



QUESTIONS?

