

Comprehensive Plan Excerpts:
Attachment A to “Rivanna Greenway Project Study Update (Old Mills Trail Extension)”
BOS Agenda Date 6/2/2021 | Granicus File ID #21-305

Tim Padalino, AICP, Chief of Parks Planning | Albemarle County Parks & Recreation | May 12, 2021

The vision for the Rivanna Greenway (in general) and the Old Mills Trail (in particular) have long been a part of local and regional plans. This includes the *Albemarle County Comprehensive Plan*, the *Jefferson Area Bicycle and Pedestrian Plan*, and the *Virginia Outdoors Plan*. This attachment provides detailed information (in narrative and graphic formats) on how the Old Mills Trail Extension would help to significantly advance County policies, plans, objectives, and strategies contained in the Comprehensive Plan.

Chapter 11 – Parks and Recreation, Greenways, Blueways, and Green Systems (“Green Systems”):

“Albemarle will have a system of high quality parks and recreational facilities throughout the County that is interconnected by greenways and paths.” (Page 11.1)

“Greenways, blueways, and other green systems add value to our County by connecting residents and visitors to parks and other popular destinations throughout the region. Greenways can add economic value by increasing property values, tourism, and recreation-related revenues. ... The protection of sensitive natural areas, especially riparian areas, also protects people and property from flood damage by buffering the natural floodplains along rivers and streams.” (Page 11.3)

▪ **Objective 2: Develop parks for active recreation.**

- Strategy 2d: Acquire the sites for and develop public parks shown for active recreation on Development Area Master Plans.

▪ **Objective 3: Complete the greenway trail system and provide access to blueways.**

- Strategy 3a: Enhance, protect, and maintain stream and river corridor vegetation, water quality, and wildlife habitats by acquiring greenways and blueways and, in some instances, improving designated greenways by adding trails.
- Strategy 3b: Continue to develop the County’s greenway system as shown in the Development Area Master Plans and on the Greenway Plan.
- Strategy 3g: Continue to encourage developers to contribute to the greenway system by dedicating land, donating easements or funds, and/or constructing portions of the trails identified on the Greenway Plan.
- Strategy 3j: Coordinate adjacent land development with the greenway, so that existing and future development can be integrated into and harmonious with the greenway system.

▪ **Objective 4: Provide access points to greenways and blueways.**

- Strategy 4a: Provide access to public greenways at locations shown in Development Area Master Plans and in places listed in the Greenway Plan.
- Strategy 4b: Provide boat access at appropriate locations along the Rivanna River, the Rivanna Reservoir, and the James River. Target access or improvements to access points at the locations listed in the Greenway Plan. (*“Many residents enjoy boating on the County’s rivers; however, parking areas at access points are very limited. ... In some cases, the safety of boat launches is very poor. A plan for better maintenance of public boat launches and adjacent parking areas is needed.”*)

Chapter 10 – Transportation:

- **Objective 4: Strengthen efforts to complete a local transportation system that includes access to pedestrian and bicycle facilities.**
 - Strategy 4b: Improve funding for an ongoing walkway, bicycle, and greenway construction fund in the Capital Improvements Program (CIP). Use all possible funding sources for the construction of walkways and bicycle facilities.
 - Strategy 4c: Continue to implement recommendations for future bicycle and pedestrian projects as identified in adopted local and regional transportation plans and studies and Development Areas Master Plans.

Chapter 7 – Rural Area:

“Farms and forests, mountain and valley views, historic buildings and sites, and abundant natural resources are among the most valued aspects of Albemarle County. Albemarle County is committed to preserving its rural heritage. Features expected in the Rural Area include:

2. *Protected natural resources, which include mountains, hills, and valleys, healthy streams and sustainable supplies of clean groundwater, and diverse, interconnected areas of viable habitat for native wildlife;*
3. *Protected historic structures, archaeological sites, and other cultural resources;*
4. *Rural and historic landscapes that enhance the visitor’s experience” (Page 7.3)*

Chapter 5 – Historical, Cultural, and Scenic Resources:

“Historic, cultural, and scenic resources create the jewel that is Albemarle County. They are key features for tourism and help provide the quality of life enjoyed by residents and business owners. ... Albemarle is rich with cultural and historic resources that represent the County’s heritage and establish a strong community identity. Cultural resources include physical features of the land that are important to a community. Historic resources also represent an area’s culture.” (Page 5.3)

“[T]he County should collaborate with...Monticello and other community organizations on historic preservation matters ... [and] collaborate on tourism outreach related to historic resources.” (Page 5.7)

- **Objective 4: Promote regional cooperation in preservation and conservation efforts, including the promotion of heritage tourism.**
 - Strategy 4a: Create and strengthen partnerships among all interest groups, including...Monticello...to collaborate on and forward the cause of historic preservation and to promote heritage tourism throughout the County and the region.

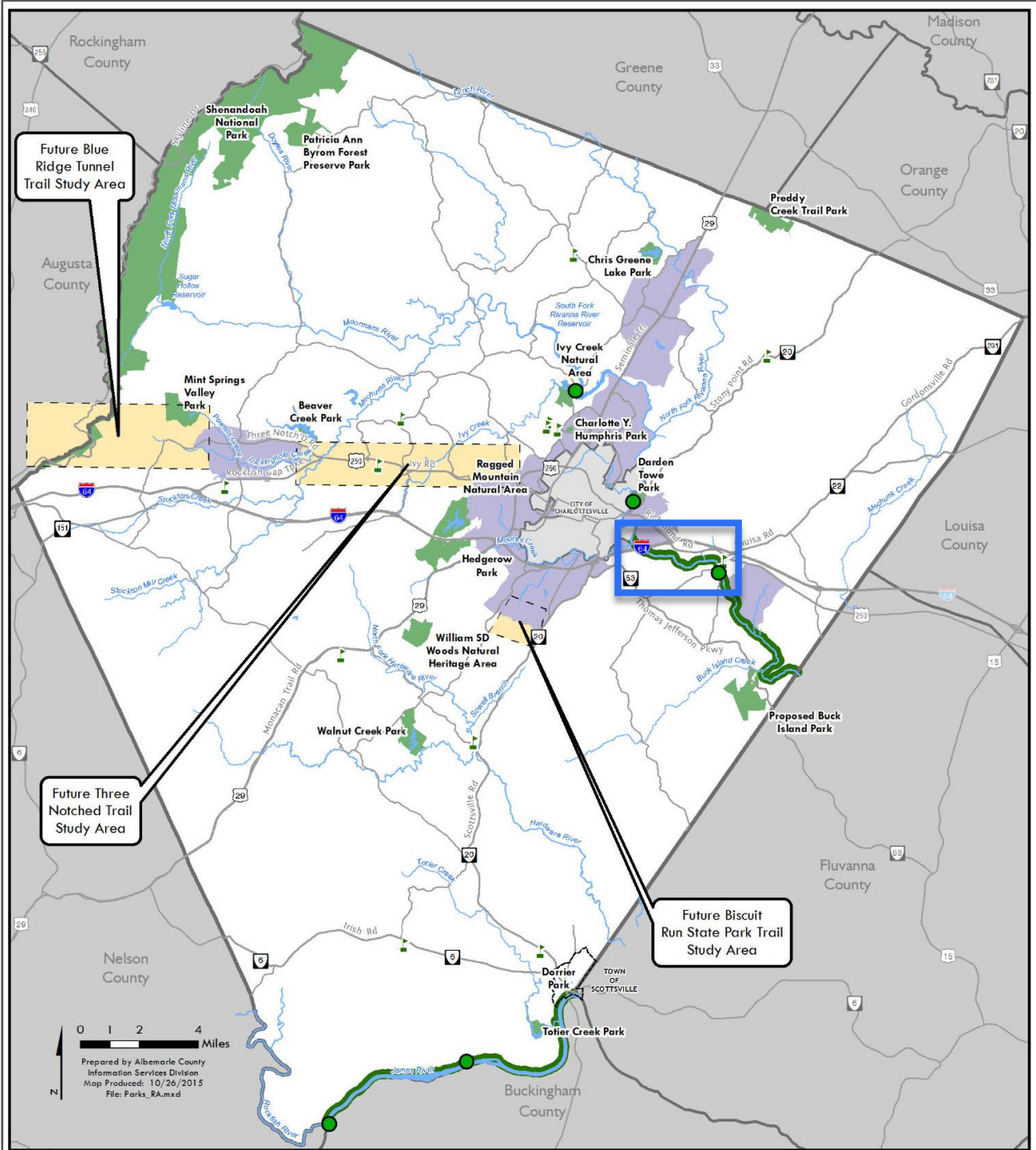
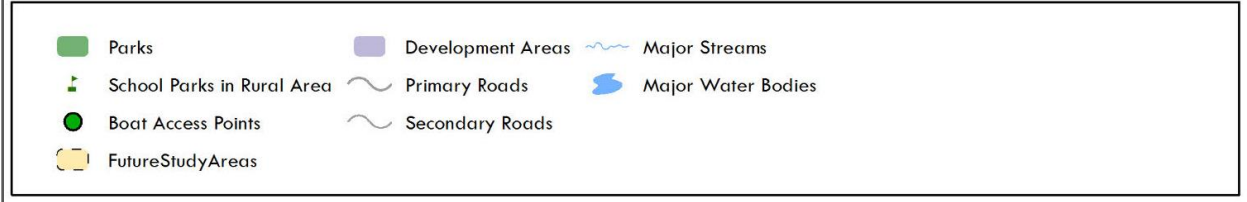


Figure 2: Albemarle County Rural Parks and Greenway Plan



Chapter 11 – Figure 2: Albemarle County Rural Parks and Greenway Plan

The Old Mills Trail Extension of the Rivanna Greenway, and the Milton Boat Launch, are depicted within the blue box.

From the Albemarle County Comprehensive Plan, Adopted June 10, 2015 – Page 11.13

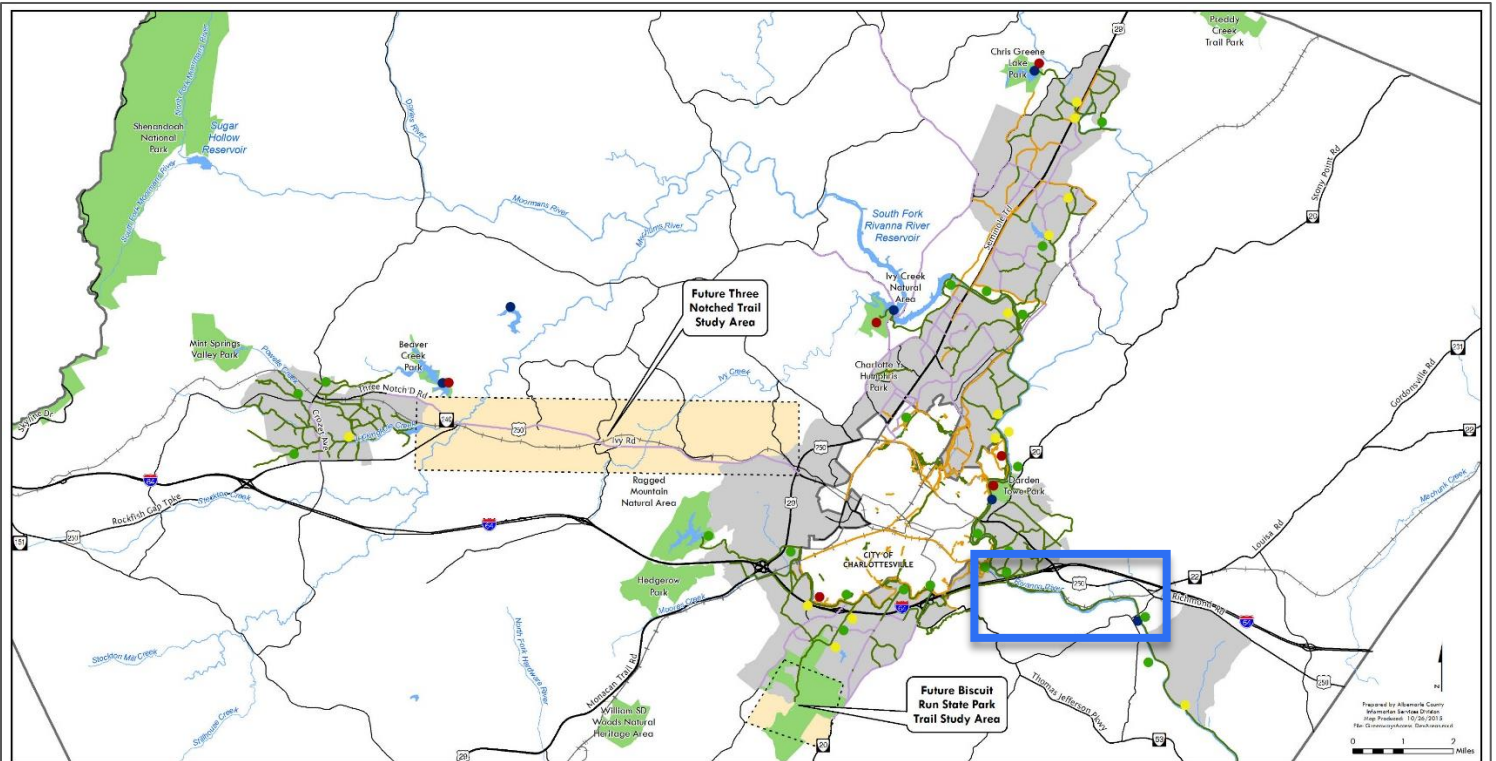


Figure 3: Greenway Plan for the Development Areas

				Public parking, restrooms, picnic areas, possible boat access	See Master Plans for Details and Names of Trails See Appendix 11.15 Greenway Plan Details for G1-G3 access information
				Public parking, no other facilities, possible boat access	
				Neighborhood access, possible parking and facilities or private access	
				Boat Access Points	

Chapter 11 – Figure 3: Greenway Plan for the Development Areas
 The Old Mills Trail Extension of the Rivanna Greenway and the Milton Boat Launch (identified as a “Boat Access Point” with “G2” public access trailhead facilities) are depicted within the blue box.
From the Albemarle County Comprehensive Plan, Adopted June 10, 2015 – Page 11.15

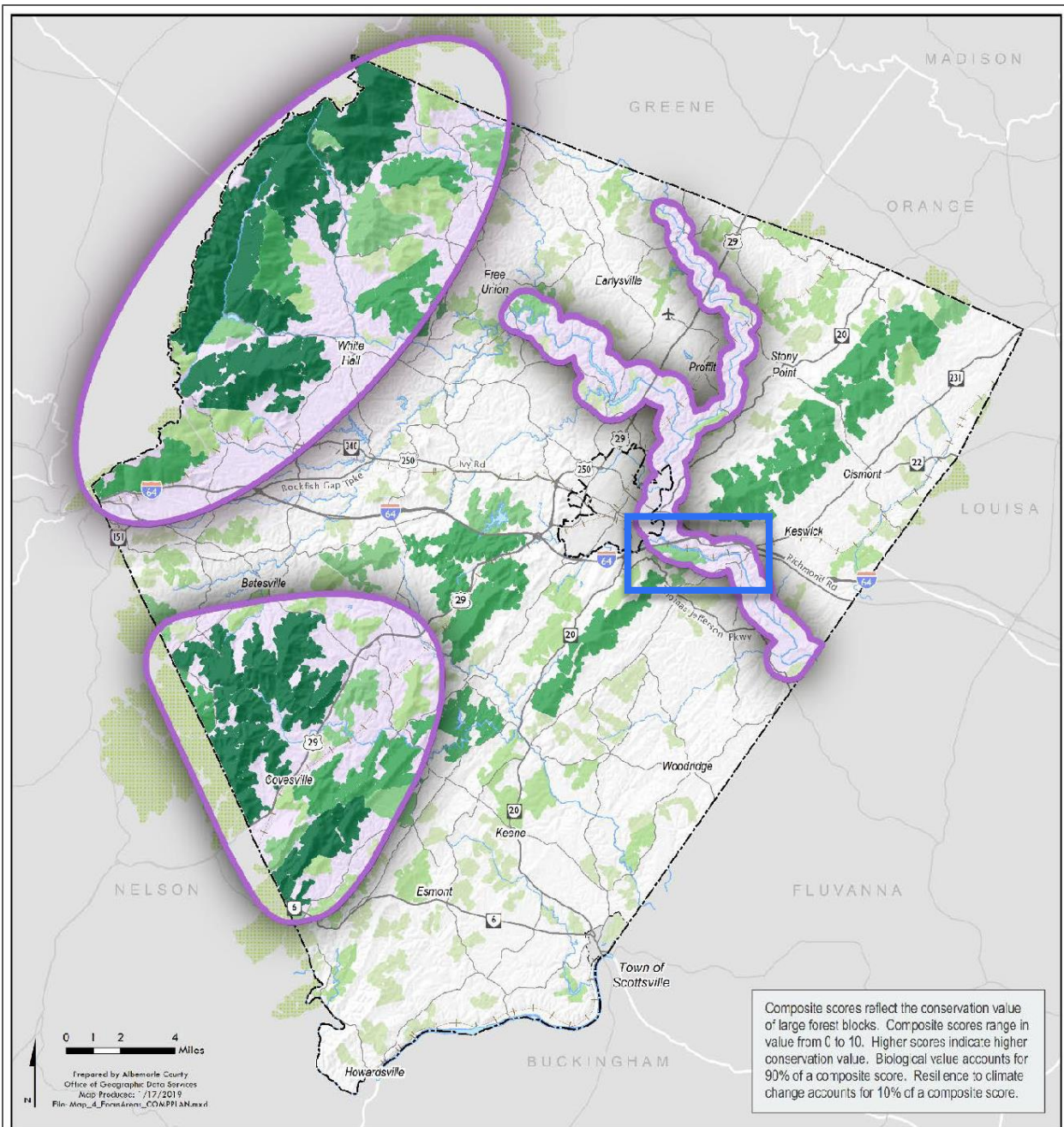


Figure 8: Conservation Focus Areas

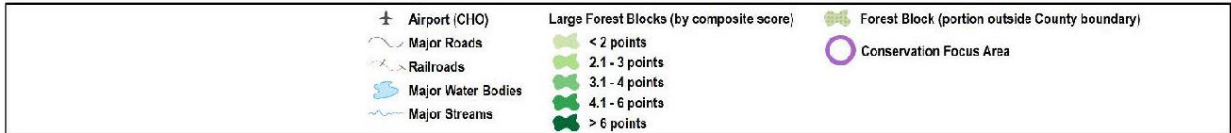


Figure 8 depicts the three areas in Albemarle County that should be a focus of conservation activity and attention.

Chapter 4 – Figure 8: Conservation Focus Areas

The Old Mills Trail section of the Rivanna Greenway (located in the blue box) is within one of Albemarle County’s three “Conservation Focus Areas” (outlined in purple).

From the Albemarle County Comprehensive Plan, Amended July 3, 2019 – Page 4.33