

COVID-19 Update

Ryan L. McKay, MPA
Director of Policy and Planning



U.S. Cases in Last 7 Days per 100k

United States: 65.3 (+17.8)

Oklahoma: 125.5

Tennessee: 117.9 (+27.9)

New Mexico: 108.4

Ohio: 105.5

Kentucky: 71.3 (+18.6)

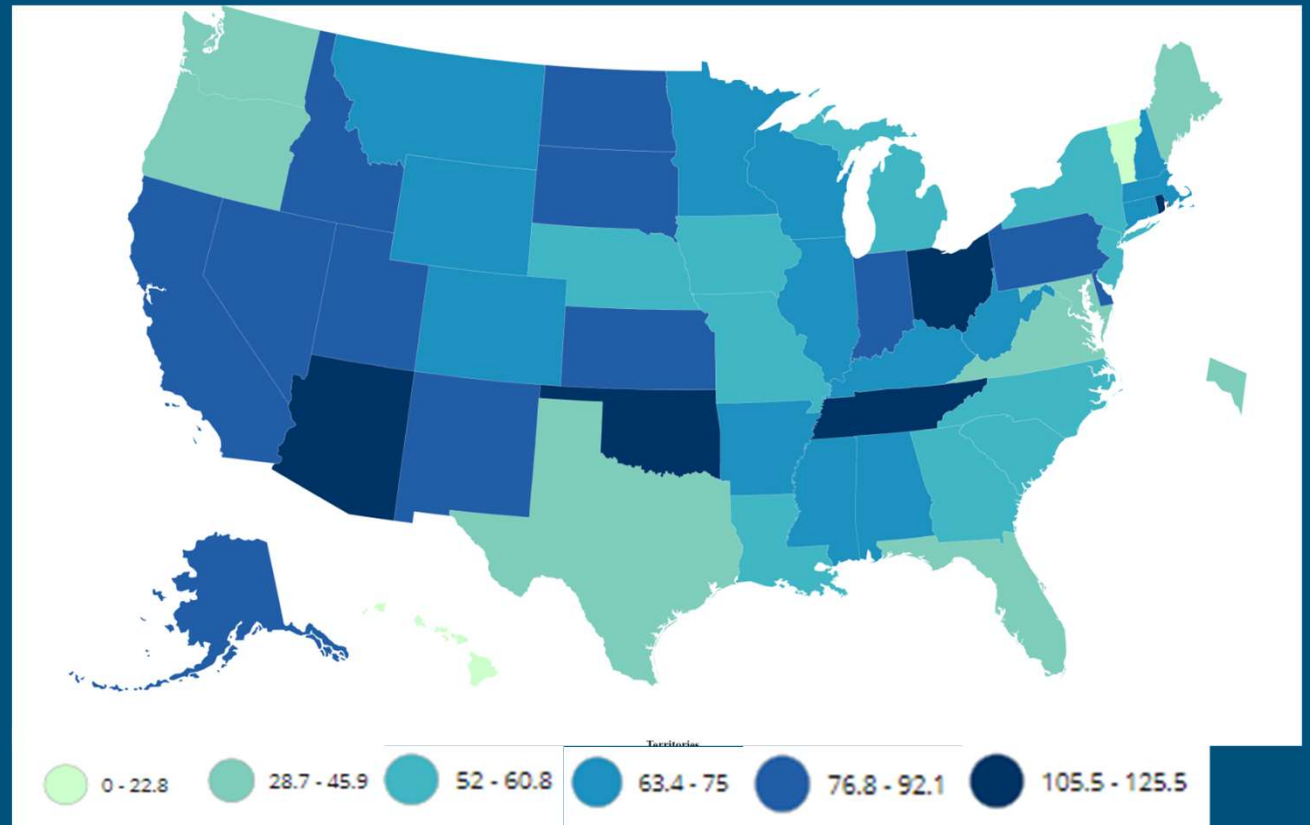
West Virginia: 65.4 (+20.4)

North Carolina: 57.8 (+31.2)

Maryland: 45.9 (+14.9)

Virginia: 42.9 (+23)

(rate increase since 11/30)



Source: https://covid.cdc.gov/covid-data-tracker/#cases_casesper100klast7days

COVID-19 Cases in Virginia

Number of New Cases
Reported^

3,160

7-Day Average Number of
Daily New Cases Reported

3,654

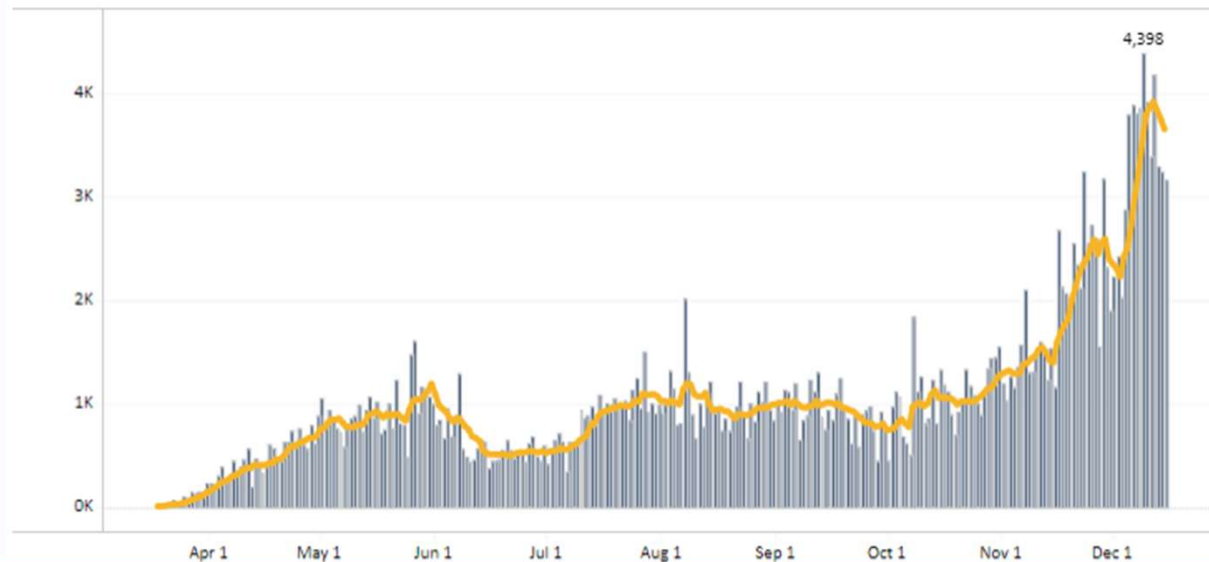
7-Day Average Number of
New Daily Cases Reported,
Rate per 100,000 Population

42.9

Total Number of New Cases
per 100,000 Population
within last 14 days

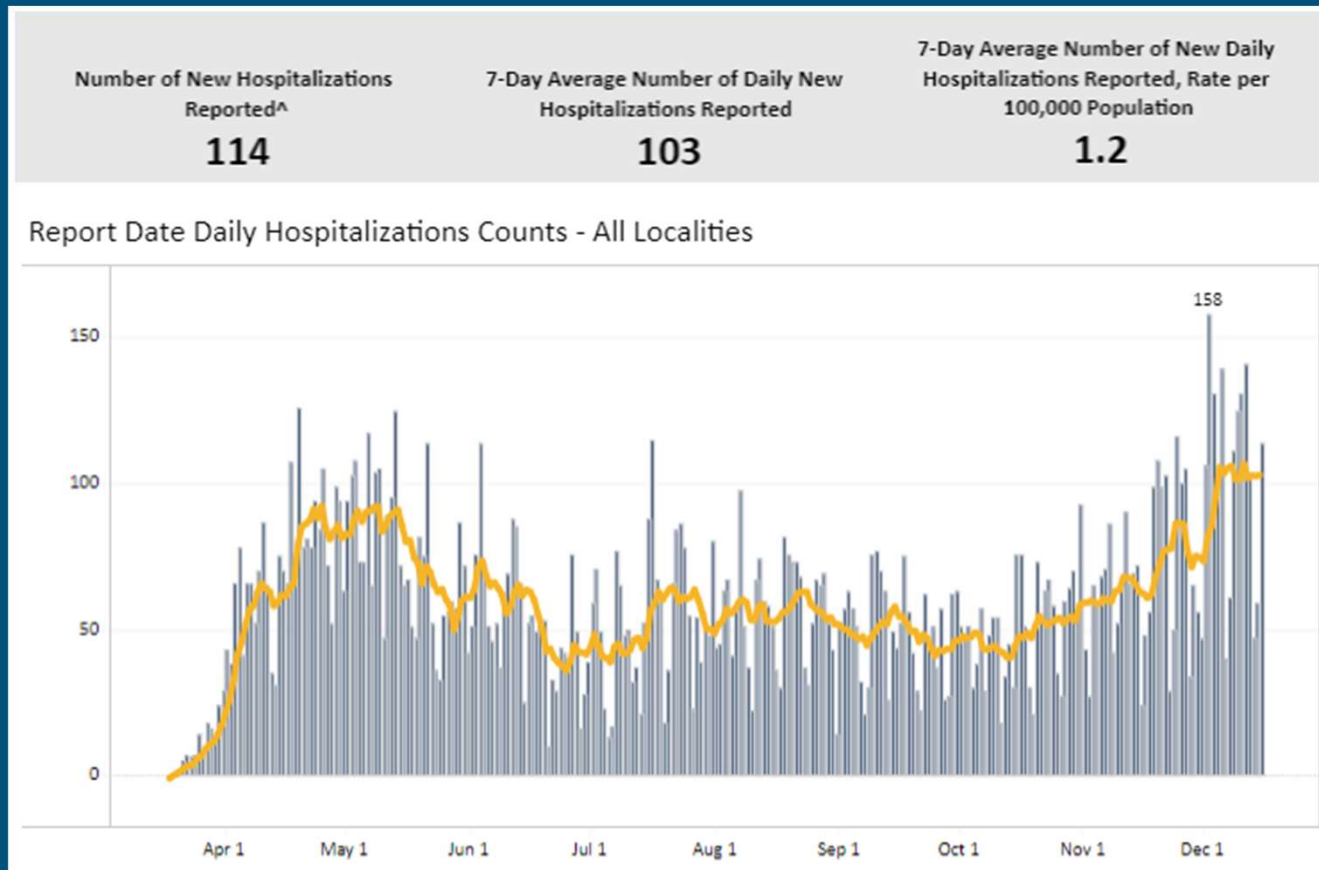
566.4

Report Date Daily Cases Counts - All Localities



<https://www.vdh.virginia.gov/coronavirus/coronavirus/covid-19-in-virginia-cases/> (data collected on 12/15/2020)

COVID-19 Hospitalizations in Virginia



<https://www.vdh.virginia.gov/coronavirus/coronavirus/covid-19-in-virginia-cases/> (data collected on 12/15/2020)

COVID-19 Case Counts in Albemarle County

November 30th, 2020

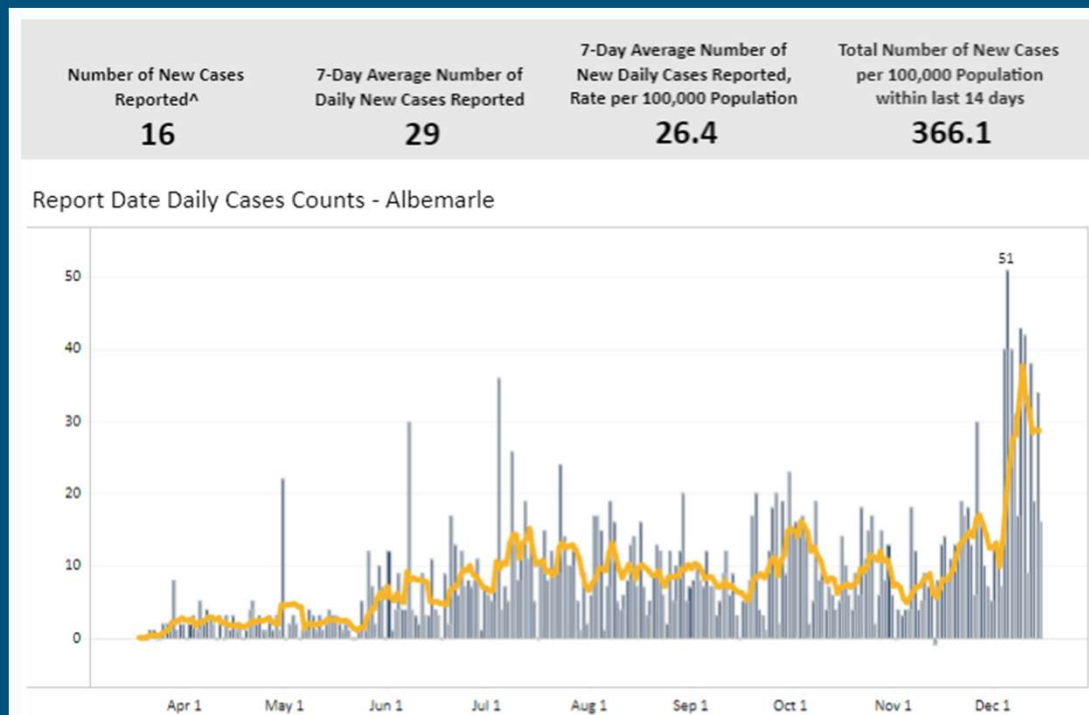
- Cumulative Cases: 1,908
- 7-day rolling sum (11/23-11/30): 87 cases

December 7th, 2020

- Cumulative Cases: 2,101
- 7-day rolling sum (11/30-12/07): 193 cases

December 14th, 2020

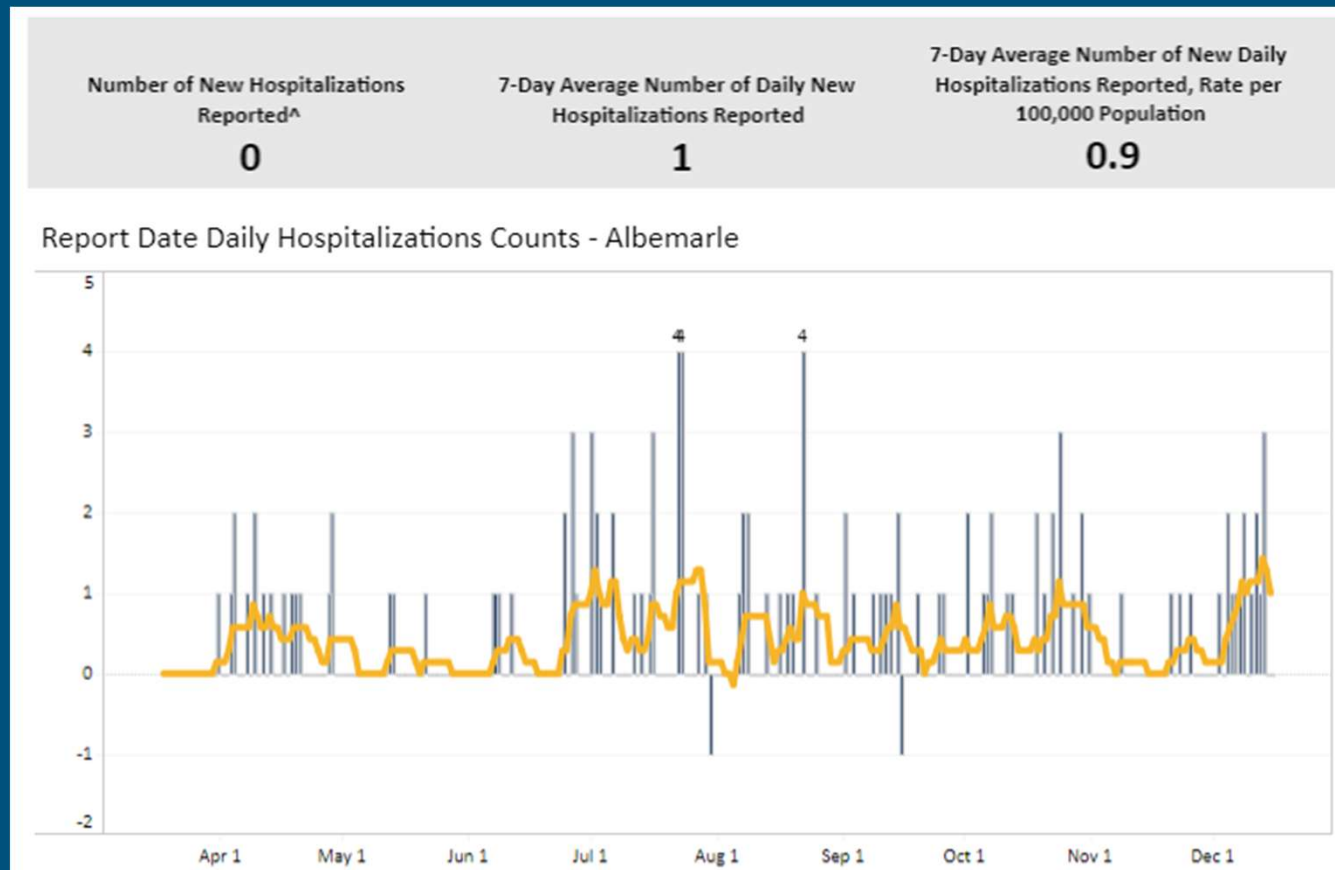
- Cumulative Cases: 2,303
- 7-day rolling sum (12/07-12/14): 202 cases



(data collected on 12/15/2020)

Source: <https://www.vdh.virginia.gov/coronavirus/coronavirus/covid-19-in-virginia-locality/>

COVID-19 Hospitalizations in Virginia



<https://www.vdh.virginia.gov/coronavirus/coronavirus/covid-19-in-virginia-cases/> (data collected on 12/15/2020)

COVID-19 Case Counts in Charlottesville

November 30th, 2020

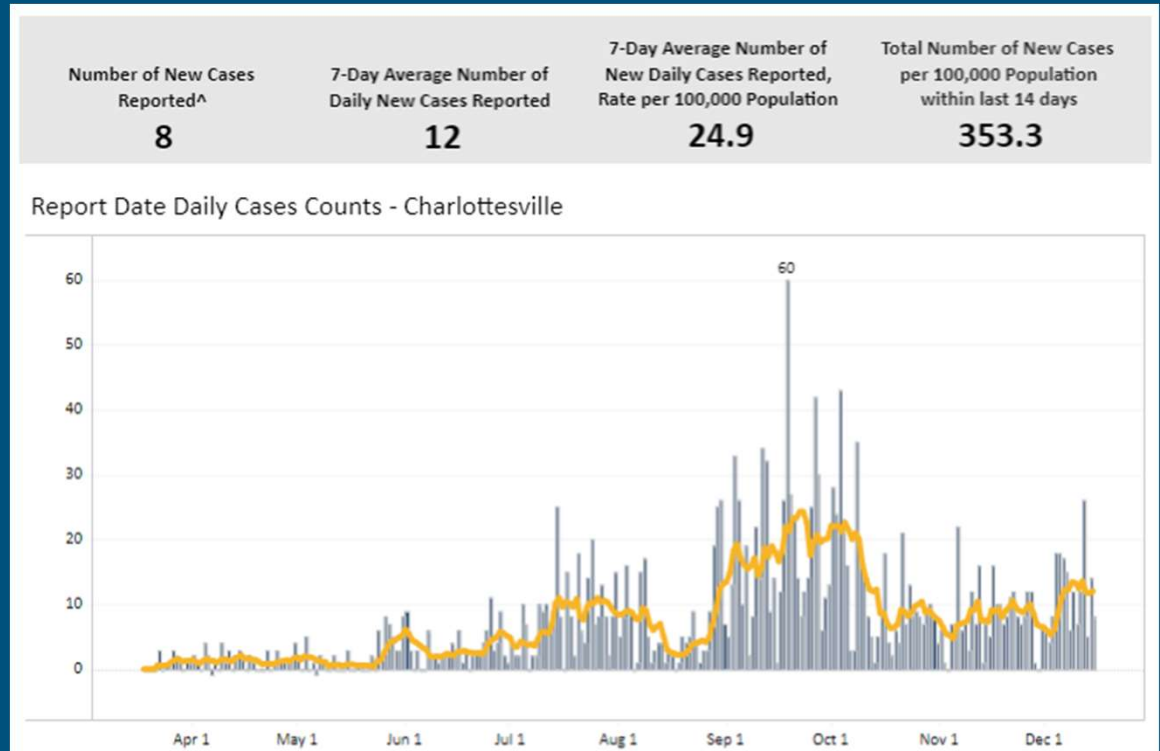
- Cumulative Cases: 1,854
- 7-day rolling sum (11/23-11/30): 46 cases

December 7th, 2020

- Cumulative Cases: 1,940
- 7-day rolling sum (11/30-12/07): 86 cases

December 14th, 2020

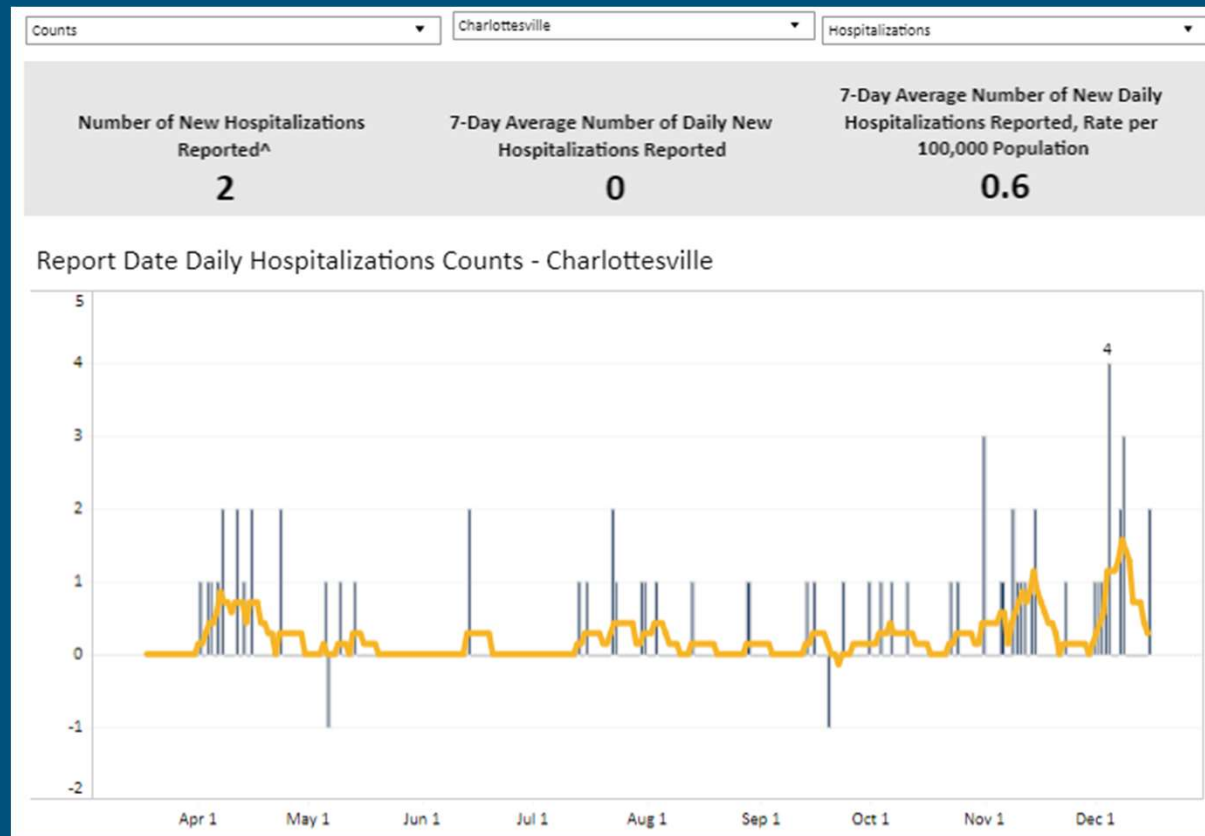
- Cumulative Cases: 2,022
- 7-day rolling sum (12/07-12/14): 82 cases



(data collected on 12/15/2020)

Source: <https://www.vdh.virginia.gov/coronavirus/coronavirus/covid-19-in-virginia-locality/>

COVID-19 Hospitalizations in Charlottesville



<https://www.vdh.virginia.gov/coronavirus/coronavirus/covid-19-in-virginia-cases/> (data collected on 12/15/2020)

COVID-19 Response Priorities for 2021

- Continued access to testing resources
- Case investigation and contact tracing, support for those in isolation or quarantine
- COVID-19 Vaccination Planning and Operations



VDH COVID-19 Vaccination Response

Summary Points

- Gatherings and travel around Thanksgiving contributed to sharp increase in cases – surge may be worse in the first part of the new year
- Hospital capacity is stable across Virginia yet hospitalizations continue to increase
- Vaccine distribution and dispensing will take time and significant resources
- Mitigation strategies must be followed to slow the current surge in cases until the vaccine can be made widely available