

The Board of County Supervisors of Albemarle County, Virginia, in regular meeting on the 15th day of January 2025, adopted the following resolution:

R E S O L U T I O N

WHEREAS, the street(s) in **The Village at Chestnut Grove**, as described on the attached Additions Form AM-4.3 dated **15th day of January 2025**, fully incorporated herein by reference, is shown on plats recorded in the Clerk's Office of the Circuit Court of Albemarle County, Virginia; and

WHEREAS, the Resident Engineer for the Virginia Department of Transportation has advised the Board that the street(s) meet the requirements established by the Subdivision Street Requirements of the Virginia Department of Transportation.

NOW, THEREFORE, BE IT RESOLVED, that the Albemarle Board of County Supervisors requests the Virginia Department of Transportation to add the street(s) in **The Village at Chestnut Grove**, as described on the attached Additions Form AM-4.3 dated **15th day of January 2025**, to the secondary system of state highways, pursuant to §33.2-705, Code of Virginia, and the Department's Subdivision Street Requirements; and

BE IT FURTHER RESOLVED that the Board guarantees a clear and unrestricted right-of-way, as described, exclusive of any necessary easements for cuts, fills and drainage as described on the recorded plats; and

FURTHER RESOLVED that a certified copy of this resolution be forwarded to the Resident Engineer for the Virginia Department of Transportation.

* * * * *

Recorded vote:

Moved by:

Seconded by:

Yeas:

Nays:

Absent:

A Copy Teste:

Claudette K. Borgersen, Clerk
Board of County Supervisors



COMMONWEALTH OF VIRGINIA DEPARTMENT OF TRANSPORTATION
Form AM 4.3

In Albemarle County

by Resolution of the governing body adopted 1/15/2025

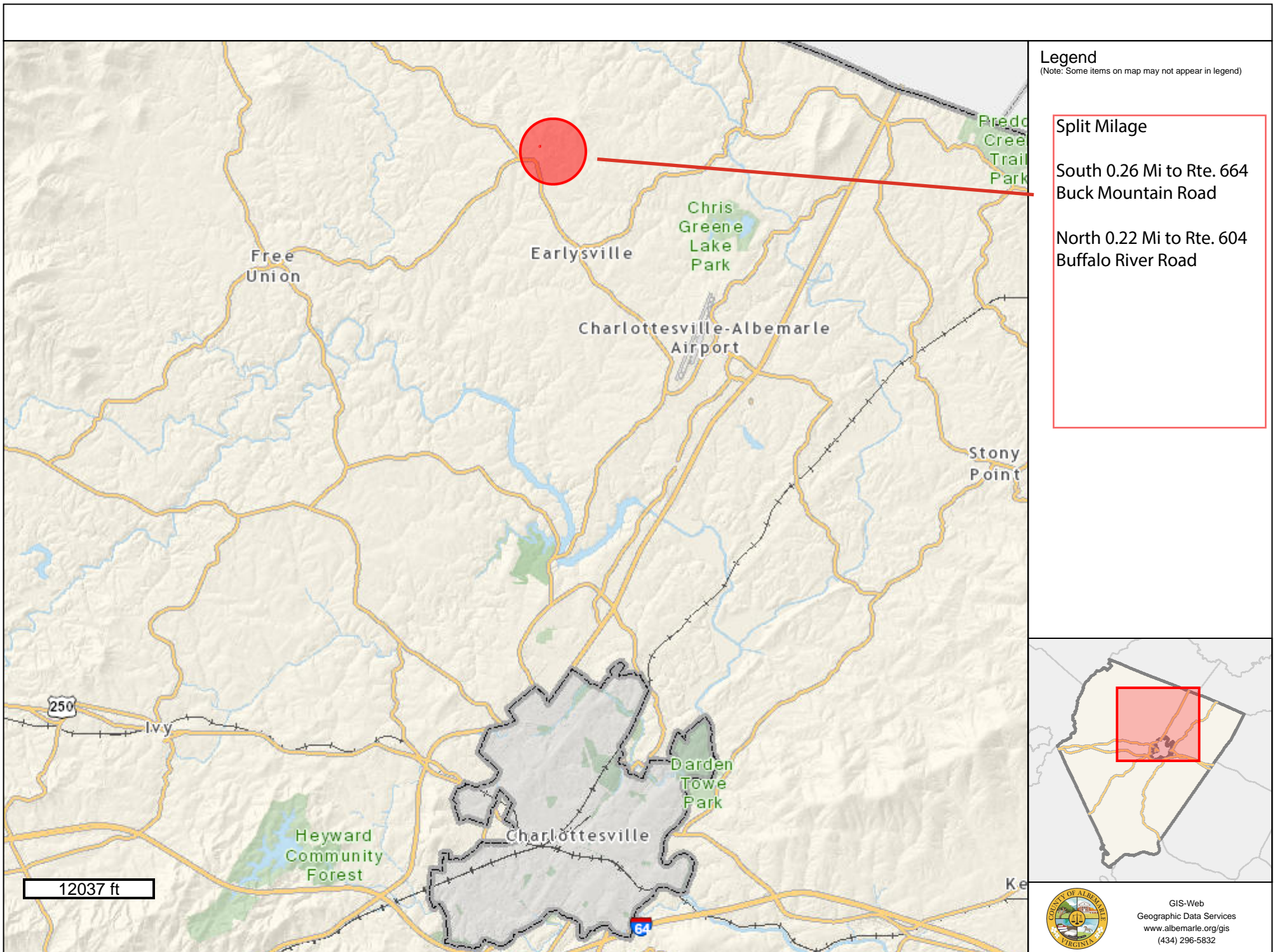
The following VDOT Form AM-4.3 is hereby attached and incorporated as part of the governing body's resolution for changes to the secondary system of state highways.

A Copy Testee Signed (County Official): _____

Report of Changes in the Secondary System of State Highways

Project/Subdivision: **The Village at Chestnut Grove**

CHANGE TYPE	RTE NUM & STREET NAME	CHANGE DESCRIPTION	FROM TERMINI	TO TERMINI	LENGTH	NUMBER OF LANES	RECORDATION REFERENCE	ROW WIDTH
Addition	Rt. 1058 - Sienna Lane	New subdivision street §33.2-705	Rte. 663 Simmons Gap Road	0.25 Mi E to CDS	0.25	2	DB 3449/308	50



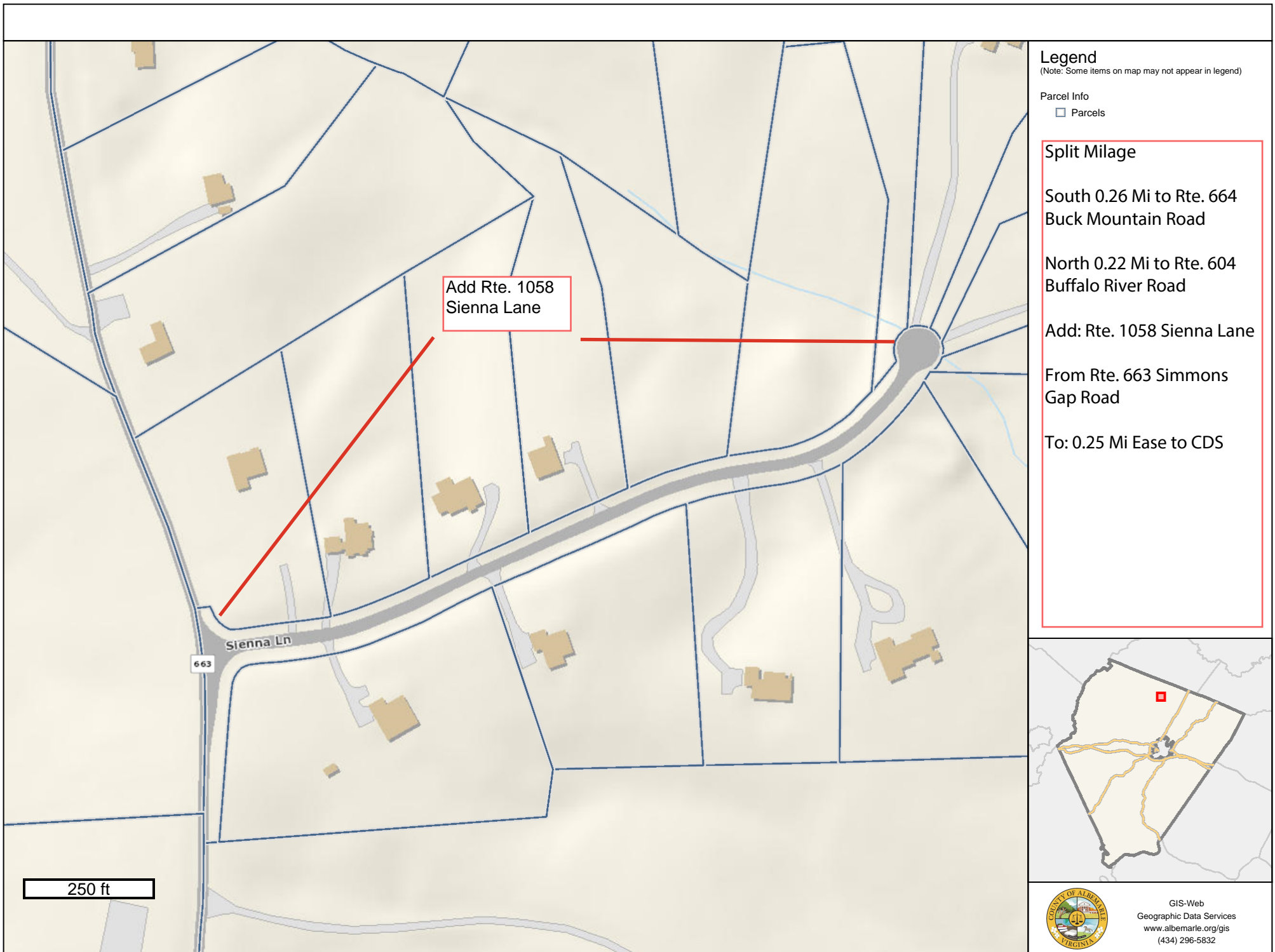
Legend
 (Note: Some items on map may not appear in legend)

- Split Milage**
- South 0.26 Mi to Rte. 664
Buck Mountain Road
 - North 0.22 Mi to Rte. 604
Buffalo River Road

12037 ft



GIS-Web
 Geographic Data Services
www.albemarle.org/gis
 (434) 296-5832



Legend
(Note: Some items on map may not appear in legend)

Parcel Info
□ Parcels

Split Milage

South 0.26 Mi to Rte. 664
Buck Mountain Road

North 0.22 Mi to Rte. 604
Buffalo River Road

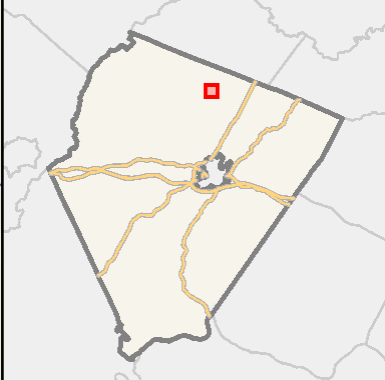
Add: Rte. 1058 Sienna Lane

From Rte. 663 Simmons
Gap Road

To: 0.25 Mi Ease to CDS

Add Rte. 1058
Sienna Lane

250 ft



GIS-Web
Geographic Data Services
www.albemarle.org/gis
(434) 296-5832