

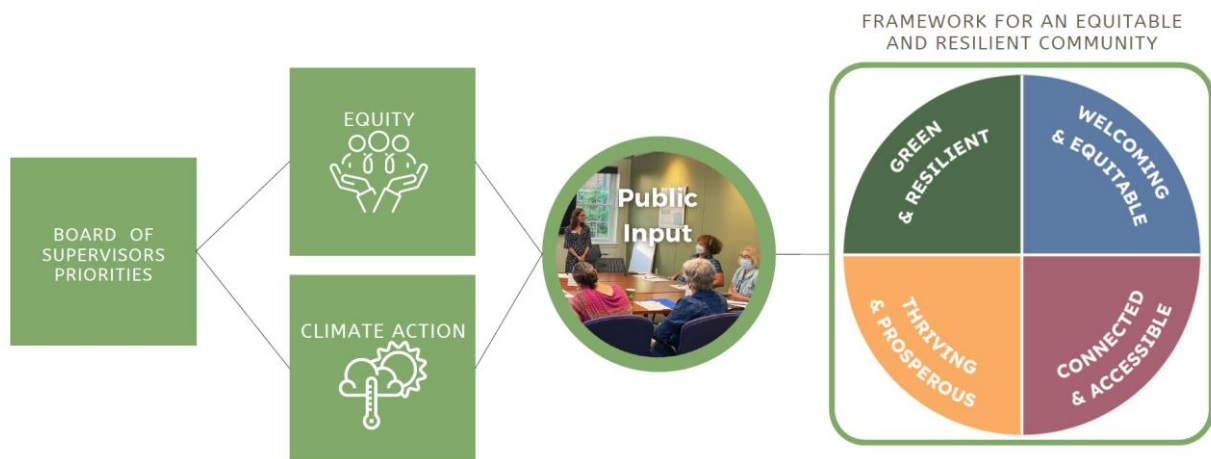
AC44- Albemarle County Comprehensive Plan Update

Framework for an Equitable and Resilient Community

Draft 9/21/2022

What is the Framework

The *AC44 Framework for an Equitable and Resilient Community* is an aspirational view of Albemarle County in the year 2044. This framework prioritizes equity and resilience as key principles to guide our policies and practices for the next 20 years. It is not a game plan for how we get there yet – that will be developed in the next phases of AC44 – but it is a guide for where we want to go, based on extensive input from community members, the AC44 Working Group, the Planning Commission, and initial direction provided by the Board of Supervisors.



The framework presents a snapshot of the County in the year 2044 as a community that has centered equity and resilience in its policies, plans, and actions. It is a community that is resilient to challenges (including climate change) and where all people have the opportunity to thrive.

The purpose of the Framework is:

- To find common ground among different interests for moving forward with a policy direction for growth management
- To build a foundation of community support that we can come back to for guidance in drafting policies
- To give guidance to an update of the Comprehensive Plan that incorporates the Board's initiatives of Equity and Climate Action
- To consolidate similar content and set clear priorities to support the AC44 project goal of improving Plan usability and creating a streamlined document.

"In the year 2044, Albemarle County is..."



A Green and Resilient Community

The County has healthy and thriving ecosystems with protected natural resources that includes water, wildlife, forests, and other natural resources. It has worked to protect these resources, especially those that serve as natural carbon sinks and enhance its resilience to climate change. As part of the commitment to resilience, the County has encouraged sustainable and regenerative agricultural practices, and these have in turn been supported through a robust local food system making abundant healthy food choices available locally. The County's legacy of valuing its natural, historic, and cultural resources has also built a thriving rural economy with sustainable farming and heritage-based and ecologically based tourism.

Green and resilient designs have been incorporated into new neighborhoods, which are compact, mixed-use developments with parks, trails, and energy-efficient design. Existing neighborhoods have parks, trails, and new landscaping and tree canopy added to them to bring greater access to green space and resilience to climate change and environmental challenges. Green and resilient designs are also incorporated in the Rural Area through energy efficient building practices, retrofits of existing building stock, and conservation site design.



A Welcoming and Equitable Community

The County is a place that enhances the well-being and quality of life for current and future community members. Neighborhoods are inclusive and contain a mix of uses, green spaces, and a variety of housing types that are accessible and affordable to all income levels and abilities. Access to a range of services, including schools, community centers, recreation, health care and

other needs for daily life is equitably distributed to all communities and income groups, including within key locations in the Rural Area to support rural communities. New developments have been designed as “complete communities” with a core of amenities and services surrounded by a wide choice of housing types and connected trails and green spaces.

Older single-use commercial centers have been redeveloped as vibrant mixed-use communities and compact urban neighborhoods at their centers with a gradation of densities at their edges to be compatible with surrounding neighborhoods. County policies and investment have supported the revitalization of older residential neighborhoods to incorporate accessible amenity spaces and community services. New housing and infill development within existing neighborhoods is appropriately scaled and designed to be compatible with nearby homes. Continued transparency, openness of information, and accessible locations and formats for engagement have made for an informed and engaged community with a variety of opportunities to participate in civic life.



A Connected and Accessible Community

The County has become more equitably connected and accessible with safe, affordable, and comfortable multimodal transportation options for all ages and abilities. Fast, reliable, public transit is available along major corridors connecting key nodes of the County and many community members are able to safely travel throughout the County without needing a personal vehicle. In existing and new neighborhoods, there is a network of trails, parks, streets, and greenways that serve all ages and abilities. In the Rural Area, there are multimodal options for walking and bicycling that coexist safely with cars and buses. Natural and wild areas are protected and there are wildlife habitats with connecting corridors and stream networks.

This connectivity has been achieved by proactively using public funds and by leveraging private improvements through development practices that build better connections for nature and people in our communities. The County has partnered regionally to improve access and connections beyond its boundaries to enhance livability and connectedness for all residents and businesses.



A Thriving and Prosperous Community

Albemarle County is economically thriving with ample job opportunities and clear pathways for all community members to achieve economic success. The County has ensured that there is substantial land and infrastructure to support new industries, while supporting and expanding existing businesses and local entrepreneurs. The County’s workforce has robust educational and job training with career ladder opportunities for all, as well as a supportive environment that includes affordable housing, flexible transportation options, and accessible

community services. There are available makerspaces and incubators for local artists, entrepreneurs, and small businesses.

Economic development is integrated into broader community planning, incorporating data to track economic opportunity and plan for industry and workforce development needs as growth occurs. The County has valued, enhanced, and preserved its vital local assets, capitalizing on its historic resources, natural resources, activities, local businesses, and arts and cultural resources to leverage a variety of tourism opportunities. The County partners with schools, colleges, and universities to support a 21st century workforce.

What are the Next Steps?

The purpose of the draft Framework for an Equitable and Resilient Community in this phase of the overall AC44 process is to bring together a general consensus among different interests as we move toward updating the policies in the existing 2015 Comprehensive Plan. The next steps immediately following the Planning Commission work session will be to:

- Summarize/incorporate Planning Commission input for the draft Framework
- Share draft Framework with the Board of Supervisors and ask for their input
- Finalize the Framework, based on Board feedback, as a foundation for the next phases of the AC44 process.

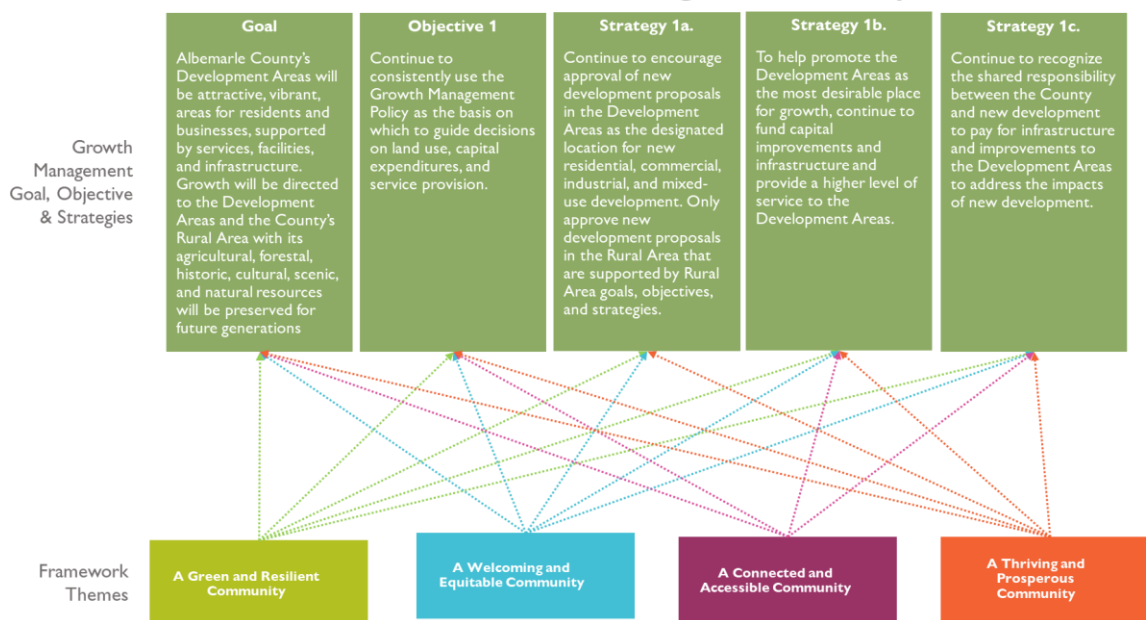
How will the Framework be Used?

Phase 2 of the AC44 process will move toward refining and updating the Goals, Objectives, and Strategies of the 2015 Comprehensive Plan, using the Framework for guidance. In Phase 2, the Framework will be used to guide the overall structure of the Plan update, incorporating the focus on equity and climate action in a new plan format and structure. It will also be used to provide specific input on equity and resilience into each of the various topics in each of the 2015 Plan chapters. In addition, in Phases 2 and 3, we will continue to explore the Growth Management Options that were shared in the previous Phase 1 round of engagement, again using the themes in the Framework for policy guidance. Finally, the Framework will provide guidance for policies related to the Land Use Buildout analysis, including land use, housing, and economic development.

Connection to the 2015 Plan Policies

The Draft Framework is intended not only to help guide the updating of the Growth Management chapter of the 2015 Plan but also each of the other 9 chapters in the Plan with topics such as Natural Resources, Transportation, Economic Development, Community Services, etc. In Phase 2, growth management policies in the 2015 Plan will be restructured using the Framework as guidance to provide an overall new guiding direction for the updated Plan.

2015 Growth Management Chapter



The Framework will be used to update each of the other elements in the 2015 Plan, in addition to Growth Management.

Shown below is an initial "Crosswalk" analysis of how each of the themes in the draft Framework relate to the 10 chapters of the 2015 Plan. Key phrases in each Framework Theme are crosswalked with the 2015 Plan chapters. This cross-walking exercise will be further applied in Phase 2 to explore specific updates and refinements to the policy language within each of the Plan chapters.

Crosswalk - Green and Resilient

Framework Themes

2015 Plan Goals

A Green and Resilient Community

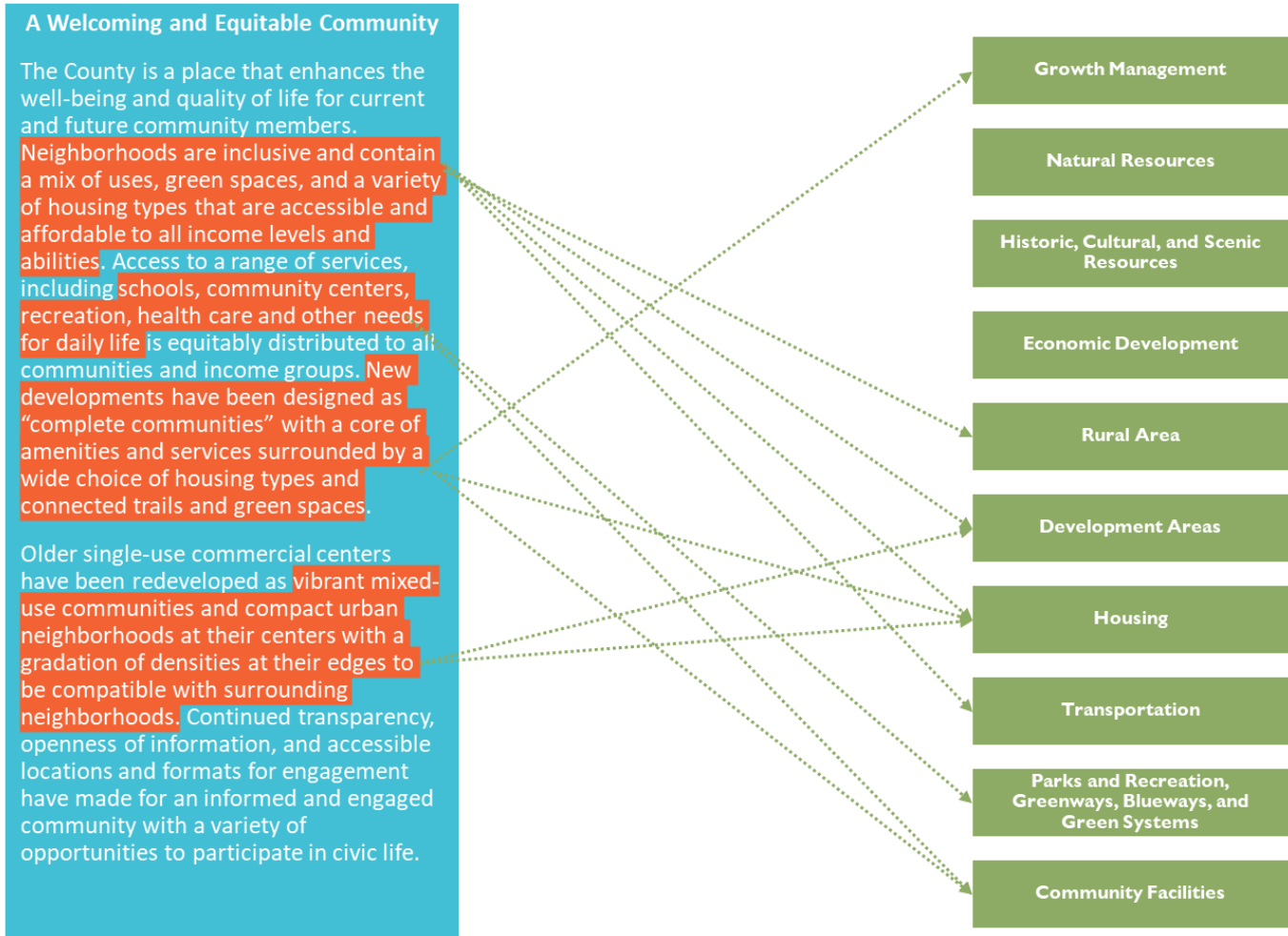
The County has healthy and thriving ecosystems with **protected natural resources** that includes water, wildlife, forests, and other natural resources. It has worked to protect these resources, serving as natural carbon sinks, and to enhance its resilience to climate change. As part of the commitment to resilience, the County has encouraged **sustainable and regenerative agricultural practices**, and these have in turn been supported through a robust **local food system** making abundant healthy food choices available locally. The County's legacy of **valuing its natural, historic, and cultural resources** has also built a thriving rural economy with **sustainable farming and heritage-based and ecologically based tourism**.

Green and resilient designs have also been incorporated into new neighborhoods, which are **compact, mixed-use developments** with parks, trails, and energy-efficient design. Existing neighborhoods have had parks, trails, and new **landscaping and tree canopy** added to them to bring greater access to green space and resilience to climate change and environmental challenges.

- Growth Management
- Natural Resources
- Historic, Cultural, and Scenic Resources
- Economic Development
- Rural Area
- Development Areas
- Housing
- Transportation
- Parks and Recreation, Greenways, Blueways, and Green Systems
- Community Facilities

Crosswalk - Welcoming and Equitable Framework Themes

2015 Plan Goals



Crosswalk - Connected and Accessible Framework Themes

2015 Plan Goals

A Connected and Accessible Community

The County has become more equitably connected and accessible with safe, affordable, and comfortable multimodal transportation options for all ages and abilities. Fast, reliable, public transit is available along major corridors connecting key nodes of the County and many community members are able to safely travel throughout the County without needing a personal vehicle. In existing and new neighborhoods, there is a network of trails, parks, streets, and greenways that serve all ages and abilities. In the Rural Area, there are multimodal options for walking and bicycling that coexist safely with cars and buses. Natural and wild areas are protected and there are wildlife habitats with connecting corridors and stream networks.

This connectivity has been achieved by proactively using public funds and by leveraging private improvements through development practices that build better connections for nature and people in our communities. The County has partnered regionally to improve access and connections beyond its boundaries to enhance livability and connectedness for all residents and businesses.

- Growth Management
- Natural Resources
- Historic, Cultural, and Scenic Resources
- Economic Development
- Rural Area
- Development Areas
- Housing
- Transportation
- Parks and Recreation, Greenways, Blueways, and Green Systems
- Community Facilities

Crosswalk - Thriving and Prosperous Framework Themes

2015 Plan Goals

