

MILL CREEK

ZMA-22-4

AVON PARK I & II

SPRING HILL VILLAGE

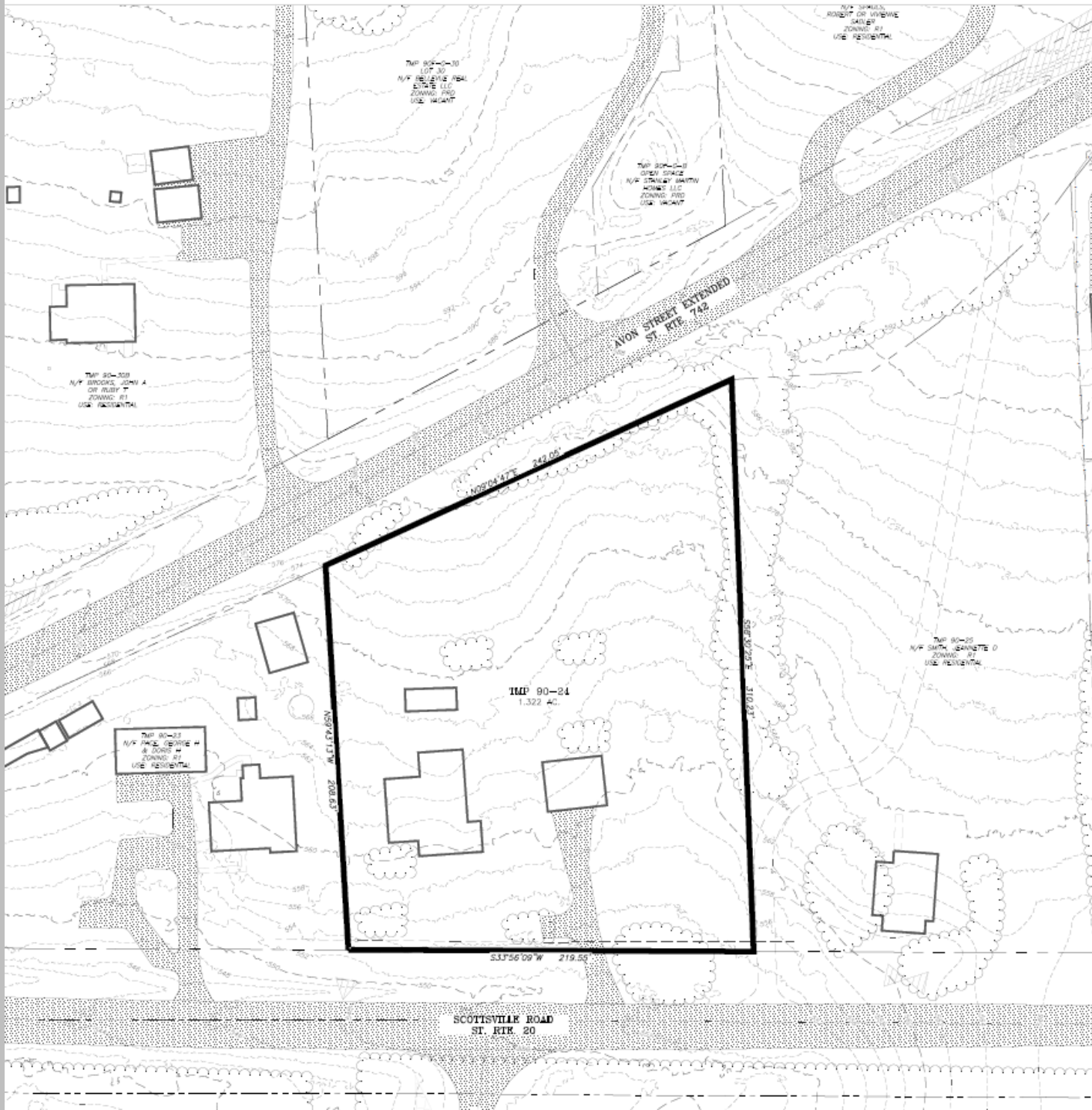
BISCUIT RUN STATE PARK

1978 Scottsville Rd

Google Earth

Image © 2024 Airbus





IMP 90-20
LOT 30
N/A BELLEVUE REAL
ESTATE LLC
ZONING: RFD
USE: RESIDENTIAL

IMP 90-21
JOHN STACE
N/A STANLEY HANCOCK
HOMES LLC
ZONING: RFD
USE: RESIDENTIAL

IMP 90-22
N/A BROOKS JOHN A
OR RUBY T
ZONING: RFD
USE: RESIDENTIAL

N/A SPANGLER
ROBERT OR LIVING
TRUST
ZONING: RFD
USE: RESIDENTIAL

AVON STREET EXTENDED
ST. RTE 742

N08°04'17" 240.06'

IMP 90-24
1.322 AC

IMP 90-25
N/A SMITH CHARLETTE D
ZONING: RFD
USE: RESIDENTIAL

IMP 90-23
N/A PAUL GENTLE H
& JUNE T
ZONING: RFD
USE: RESIDENTIAL

W11°12'00" 209.83'

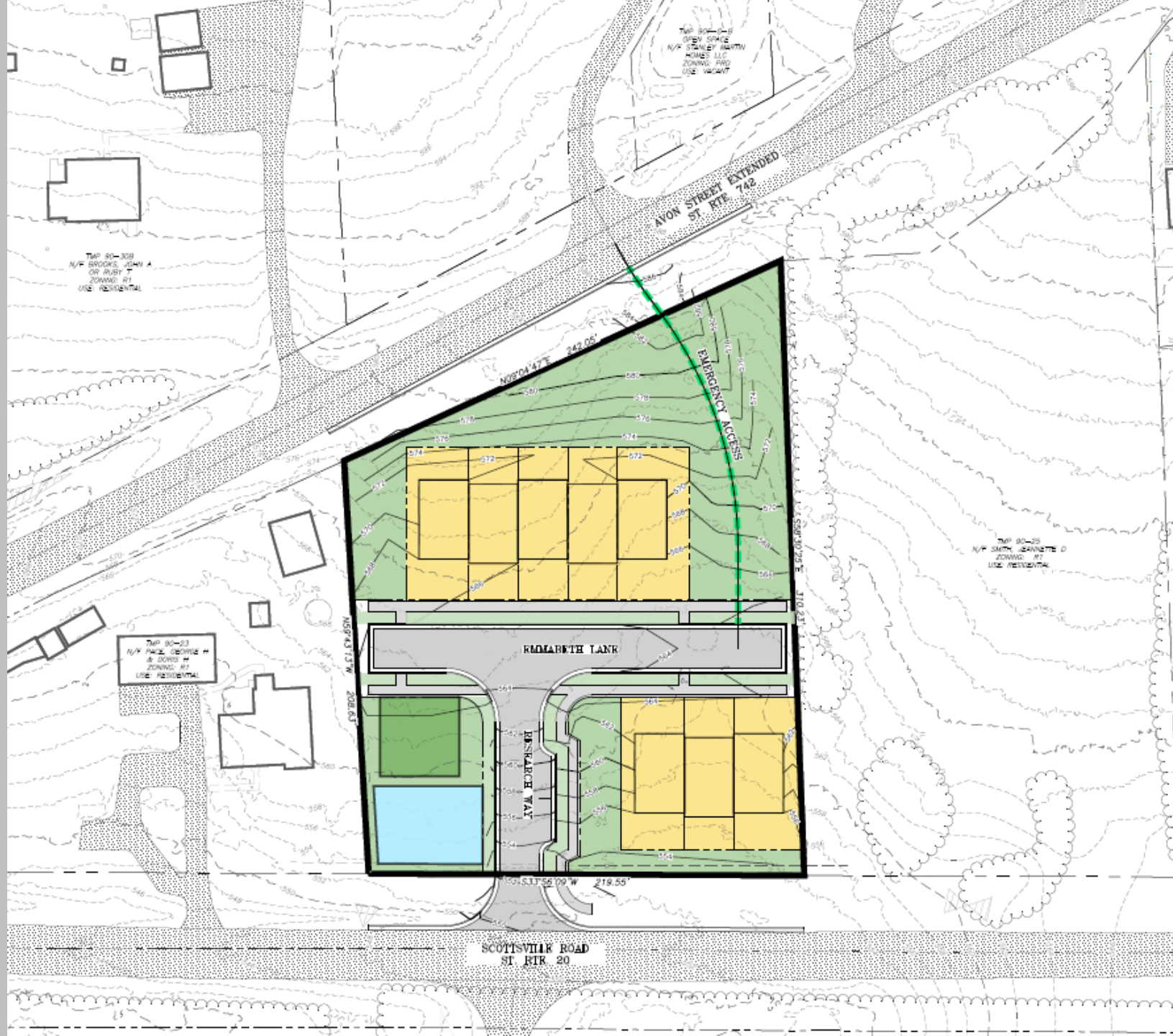
S89°20'31" 110.31'

S31°56'09" W 219.55'

SCOTTSMIRE ROAD
ST. RTE 20

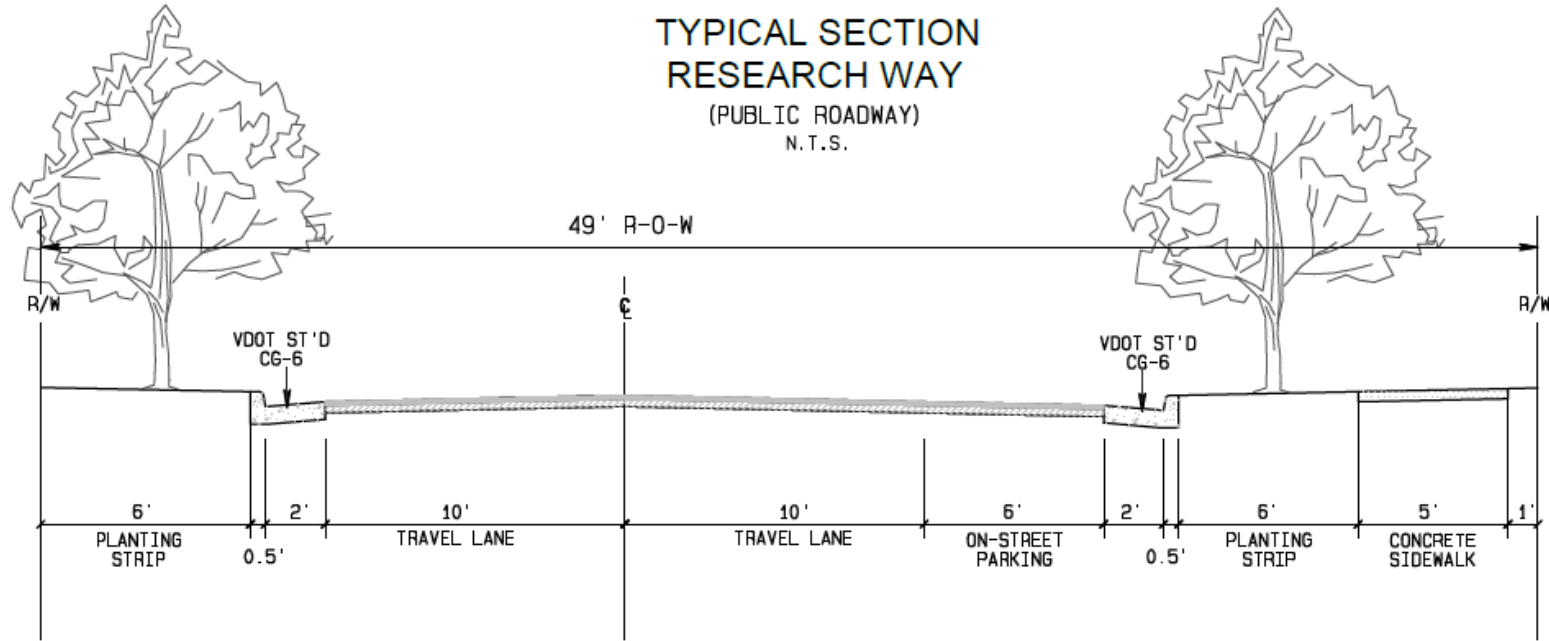






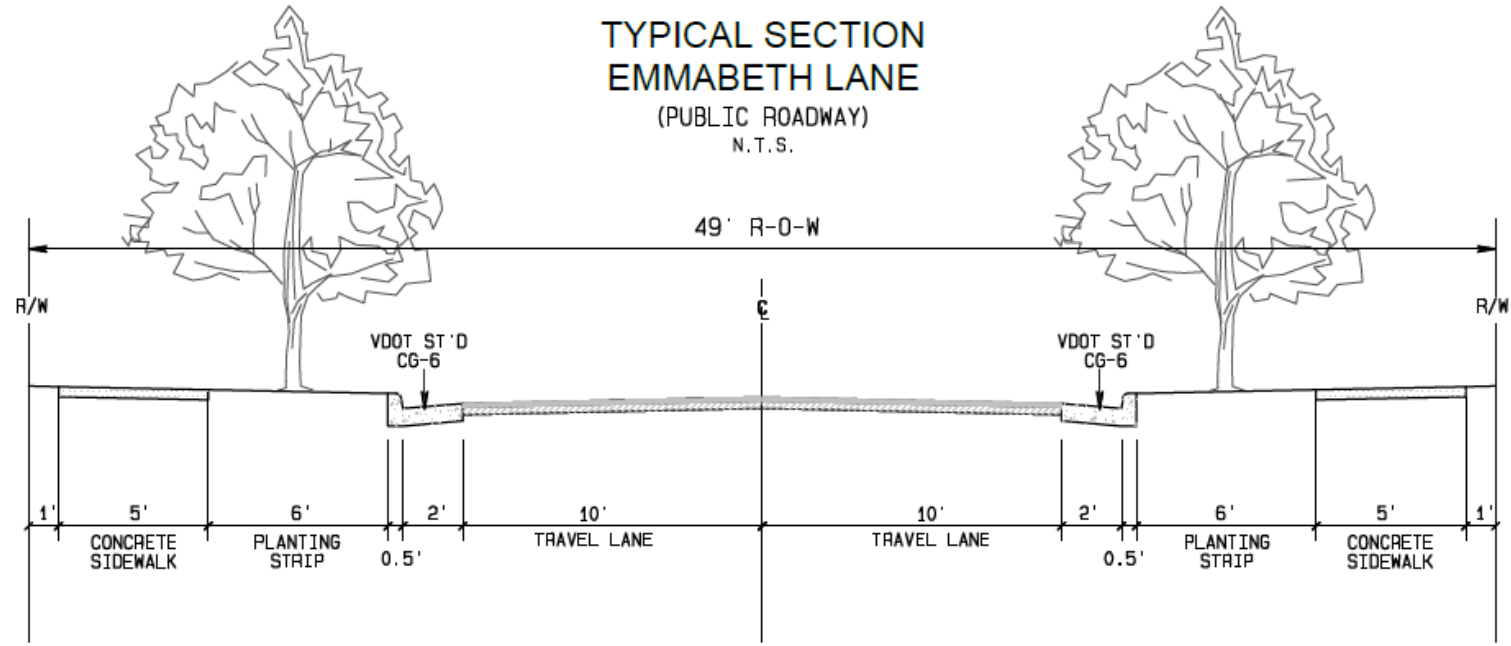
TYPICAL SECTION RESEARCH WAY

(PUBLIC ROADWAY)
N.T.S.



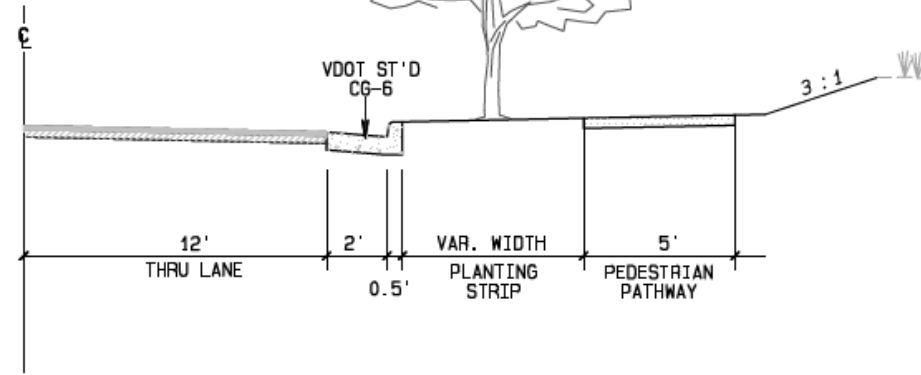
TYPICAL SECTION EMMABETH LANE

(PUBLIC ROADWAY)
N.T.S.



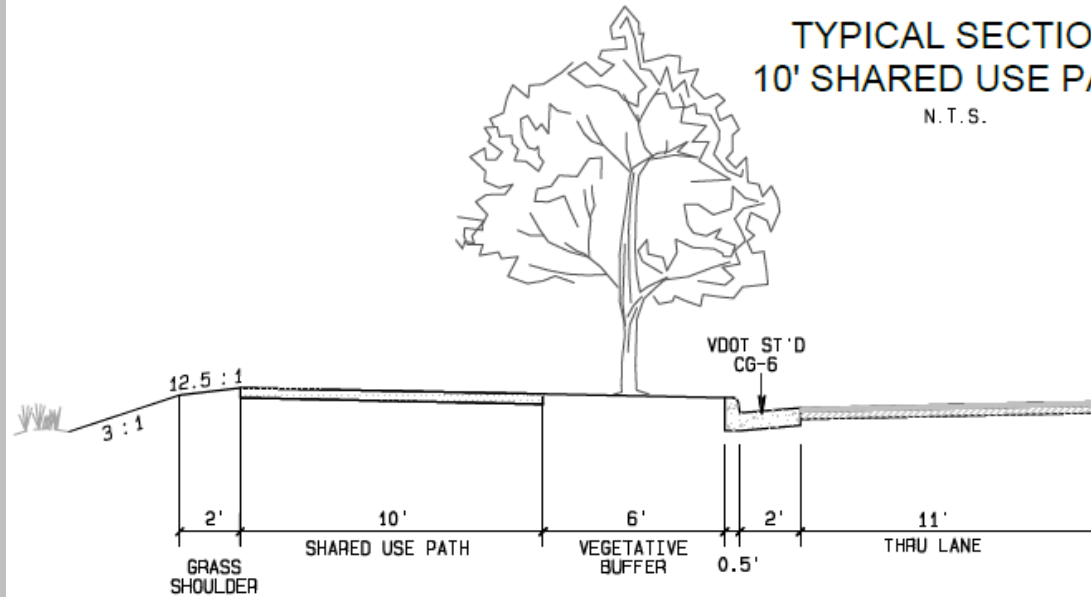
PEDESTRIAN PATHWAY

N.T.S.



TYPICAL SECTION 10' SHARED USE PATH

N.T.S.



TYPICAL SECTION EMERGENCY ACCESS

N.T.S.

