

# SP202400023 Congregation Beth Israel (CBI) Forest School - Dudley - Zoning Map

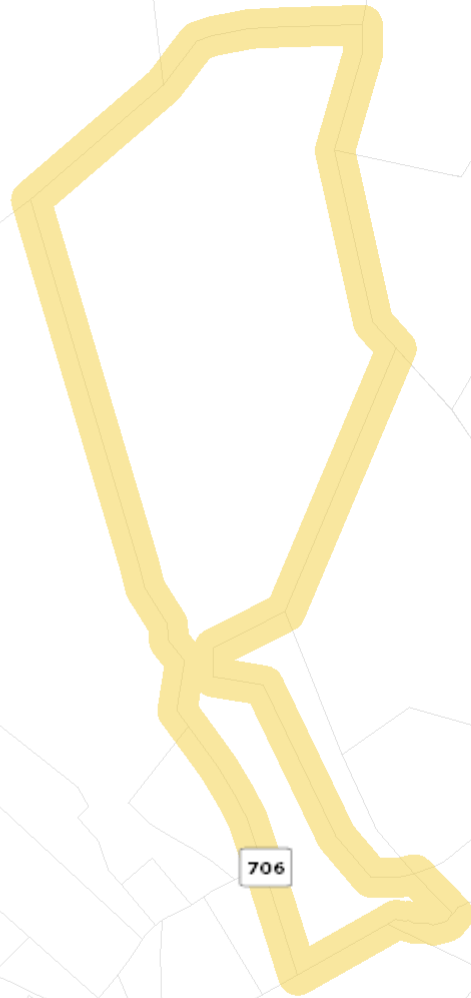
## Legend

(Note: Some items on map may not appear in legend)

### Zoning Info

#### Zoning Classifications

- Rural Areas
- Village Residential
- R1 Residential
- R2 Residential
- R4 Residential
- R6 Residential
- R10 Residential
- R15 Residential
- Planned Unit Development
- Planned Residential Development
- Neighborhood Model District
- Monticello Historic District
- C1 Commercial
- Commercial Office
- Highway Commercial
- Planned Development Shopping Ctr.
- Planned Development Mixed Comm.
- Downtown Crozet District
- Light Industry
- Heavy Industry
- Planned Development Industrial Par
- Town of Scottsville

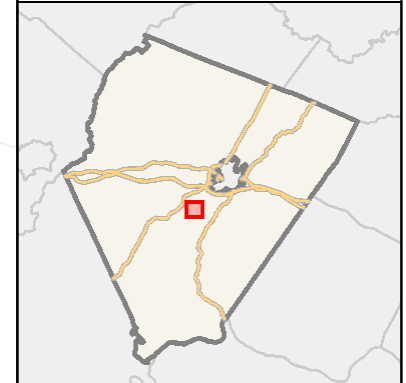


Dudley Mountain Rd

Ambrose Commons Dr

706

1505 ft

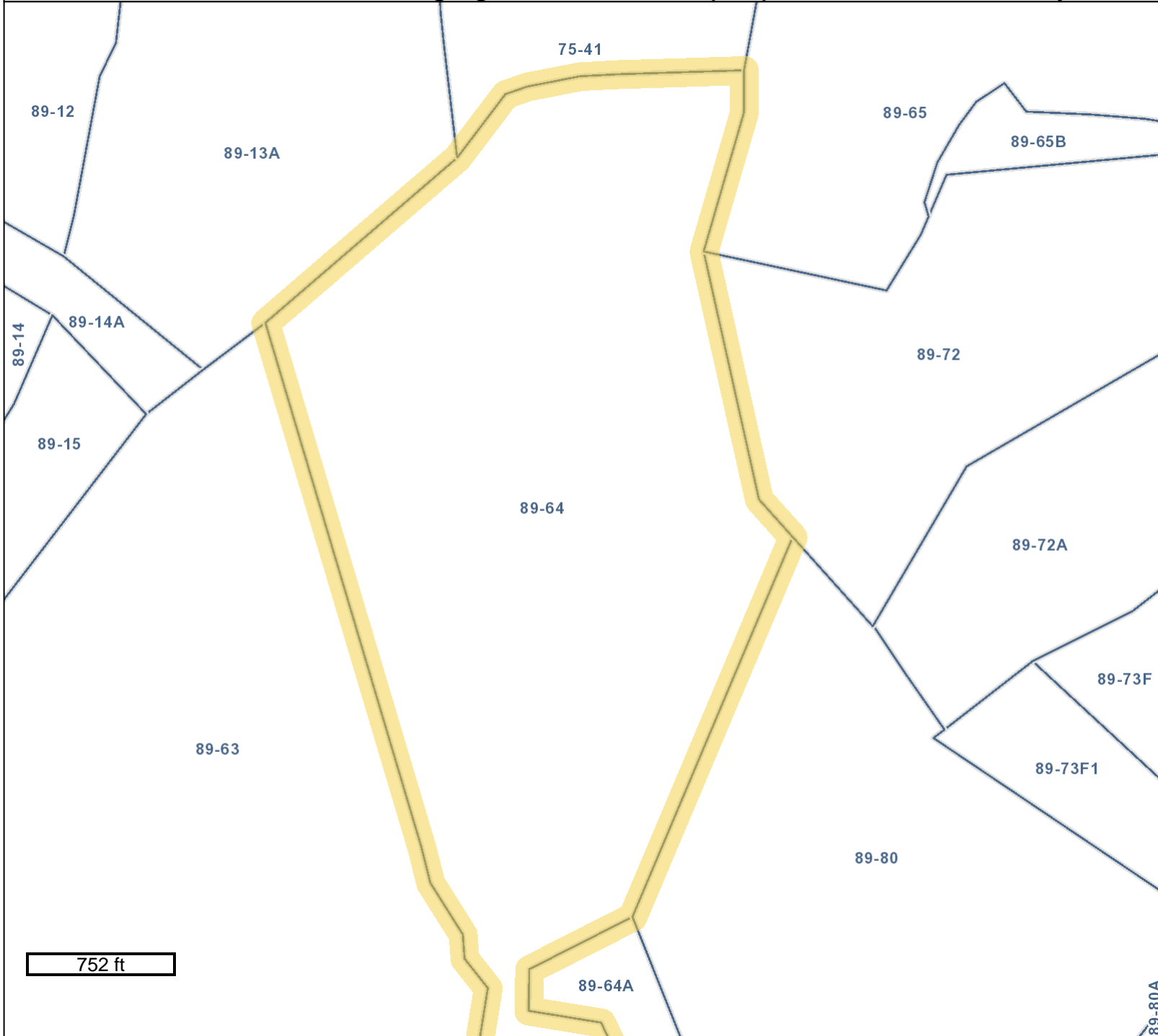


GIS-Web  
Geographic Data Services  
[www.albemarle.org/gis](http://www.albemarle.org/gis)  
(434) 296-5832

[illegible]

May 6, 2025

# SP202400023 Congregation Beth Israel (CBI) Forest School - Dudley - Zoning Map



## Legend

(Note: Some items on map may not appear in legend)

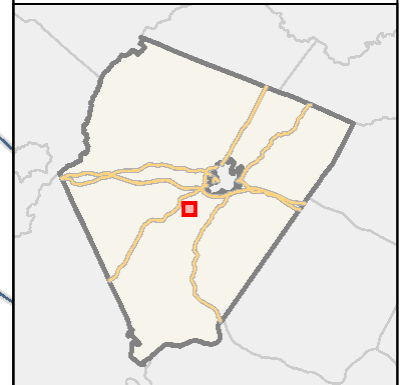
### Parcel Info

- Parcels

### Zoning Info

#### Zoning Classifications

- Rural Areas
- Village Residential
- R1 Residential
- R2 Residential
- R4 Residential
- R6 Residential
- R10 Residential
- R15 Residential
- Planned Unit Development
- Planned Residential Development
- Neighborhood Model District
- Monticello Historic District
- C1 Commercial
- Commercial Office
- Highway Commercial
- Planned Development Shopping Ctr.
- Planned Development Mixed Comm.
- Downtown Crozet District
- Light Industry
- Heavy Industry
- Planned Development Industrial Par
- Town of Scottsville



GIS-Web  
Geographic Data Services  
[www.albemarle.org/gis](http://www.albemarle.org/gis)  
(434) 296-5832