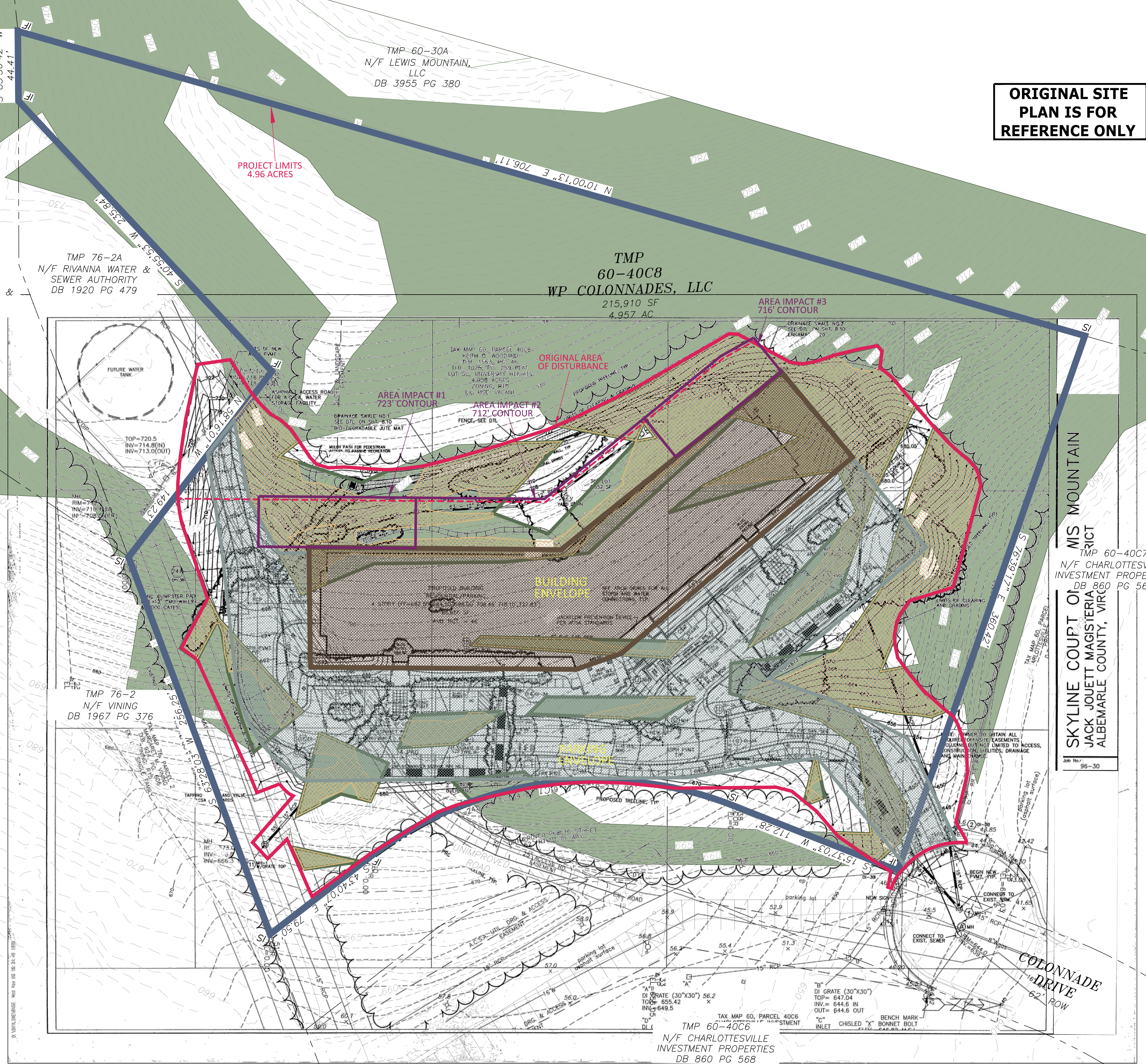


EXHIBIT #6: PROPOSED APPLICATION PLAN WITH PRESERVED STEEP SLOPE IMPACTS

LEGEND

-  LIMITS OF PROPERTY
-  ORIGINAL AREA OF DISTURBANCE
-  ALBEMARLE COUNTY PRESERVED STEEP SLOPES
-  FIELD SURVEY - TOPOGRAPHY
-  PROPOSED BUILDING ENVELOPE
-  PROPOSED PARKING ENVELOPE
-  FIELD SURVEY / FIELD VERIFIED PRESERVED STEEP SLOPES
-  OPEN SPACE / GREENSPACE TO REMAIN (APPROX. 3.0+/- ACRES) 60% +/- OF THE SITE
-  AREA OF PRESERVE SLOPE IMPACTS ABOVE THE 700' CONTOUR
-  30' BUILDING OFFSET

ORIGINAL SITE PLAN IS FOR REFERENCE ONLY



TMP 76-2A1
N/F RIVANNA WATER & SEWER AUTHORITY
DB 1920 PG 482

TMP 76-2A
N/F RIVANNA WATER & SEWER AUTHORITY
DB 1920 PG 479

TMP 60-30A
N/F LEWIS MOUNTAIN, LLC
DB 3955 PG 380

TMP 60-40C8
WP COLONNADES, LLC
215,910 SF
4.957 AC

AREA IMPACT #3
716' CONTOUR

TMP 60-40C7
N/F CHARLOTTESVILLE INVESTMENT PROPERTIES
DB 860 PG 568

SKYLINE COURT OF MIS MOUNTAIN RICT
JACK JOUETT MAGISTERIA ALBEMARLE COUNTY, VIRG

C1
A=245.23'
R=237.00'
D=59°17'10"
CD=234.44'
CB=S 14°01'32" E

TMP 76-2
N/F VINING
DB 1967 PG 376

TMP 60-40C6
N/F CHARLOTTESVILLE INVESTMENT PROPERTIES
DB 860 PG 568

VA SOUTH ZONE
NAD 83

