



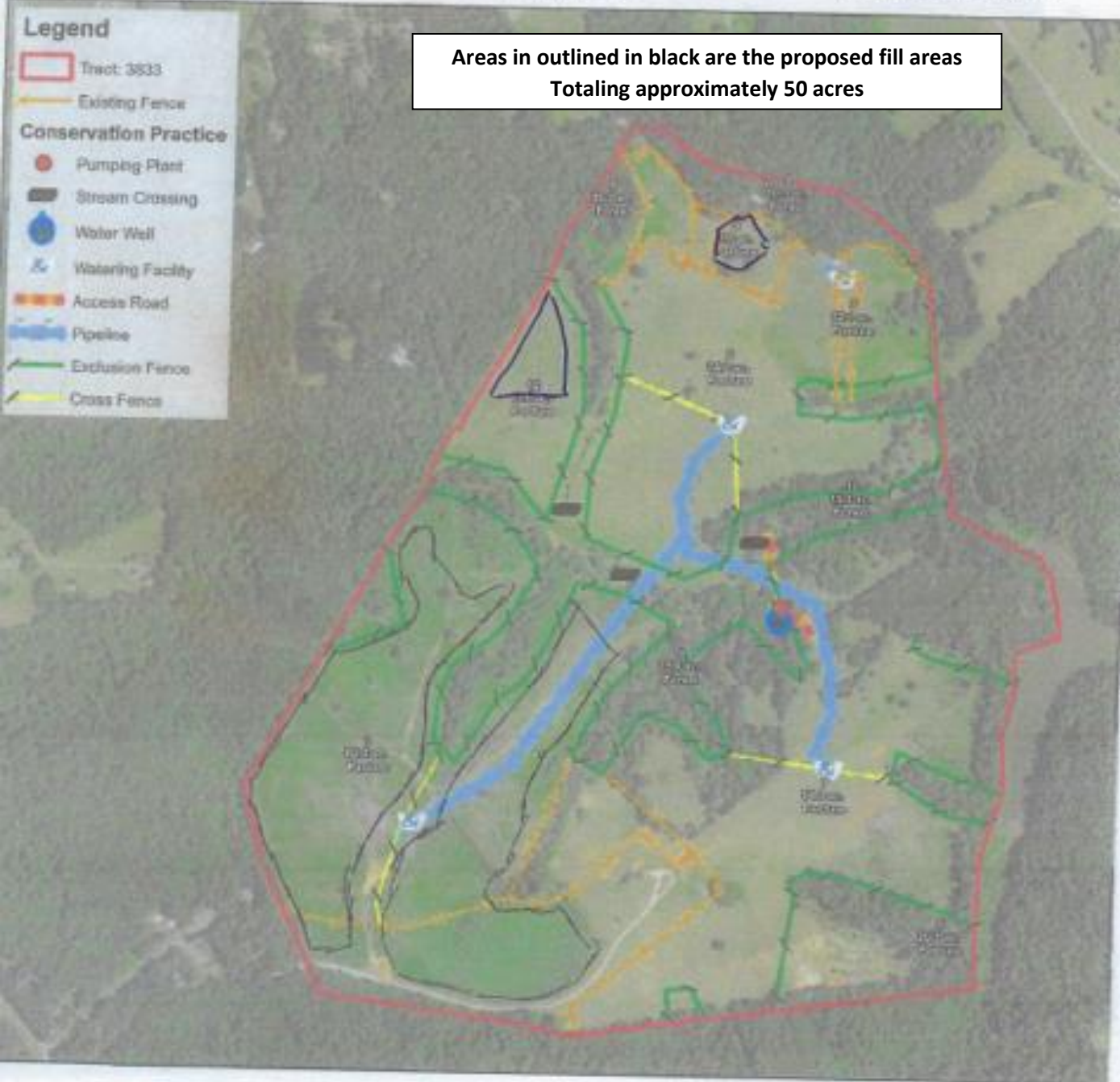
Basic Plan Map

State: Virginia
County: Albemarle

Assisted by: Jon Lipinski
Soil Conservationist
Louisa Service Center
Thomas Jefferson SWCD

Date: 10-26-2017

Producer: T. Kindrick



Areas in outlined in black are the proposed fill areas
Totaling approximately 50 acres

- Legend**
- Tract: 3833
- Existing Fence
- Conservation Practice**
- Pumping Plant
- Stream Crossing
- Water Well
- Watering Facility
- Access Road
- Pipeline
- Exclusion Fence
- Cross Fence



1:8,400

Note accuracy to for a scale of 1:12,000. Some distortions may exist when zoomed at larger scale.

1 inch = 700 feet

