

# FES Quarterly Report – January 2022

Facilities & Environmental Services Department, Albemarle County



## Top of the News

### Sustainable Operations Policies

County staff have begun an initiative to develop new policies – and update existing ones – that will guide local government operations toward a higher level of sustainability. Implementation of these policies will reduce the generation of pollution (including greenhouse gas emissions), minimize waste, save money over the long term, and create a more comfortable and healthy human experience.

Over the years, the County has adopted a number of policies relating to environmental management, pollution prevention, and energy use reduction – including a broad environmental management policy signed by the County Executive in 2007. However, these existing policies are incomplete and do not fully reflect present circumstances and organizational priorities.

For instance, the adopted Climate Action Plan calls for at least 25 separate actions that relate to sustainable County operations. For example, action B.6.2 calls for the establishment of a green buildings policy to include operations, new construction, and renovations. In the landscape section of the Plan, action L.4.4 sets a goal to reduce carbon emissions associated with maintaining County parks, building grounds, and other properties. Many of these CAP actions will be either fully or partially realized through this effort.

In addition, this initiative will fulfill a recent Board directive for the County to adopt a policy limiting the use of some plastic products, such as single-use water bottles. This directive is, in part, a reaction to the Virginia Governor's Executive Order #77 – calling for State agencies and institutions to reduce plastic pollution through phasing out the use of certain plastics products, beginning with a 25% reduction by December 31, 2022.

Policy development is being done in small teams of staff having applicable expertise or representing key stakeholders. Separate teams will focus on each of the following policy categories:

- buildings, including design, construction, operation, and maintenance
- vehicle fleet and employee commute
- landscape and natural resources

## Table of Contents

### Top of the News

- Sustainable Operations Policies Development
- Sidewalk Construction Update

### Community Initiatives

- Fall Litter Clean Up
- Native Plant Installations

### New Employee Spotlight

- Mike Stumbaugh

### Capital Projects Summary

- By type
- By magisterial district

### Capital Projects Report

Detailed capital projects scope and updates

- minimizing the waste and environmental impact of purchased products

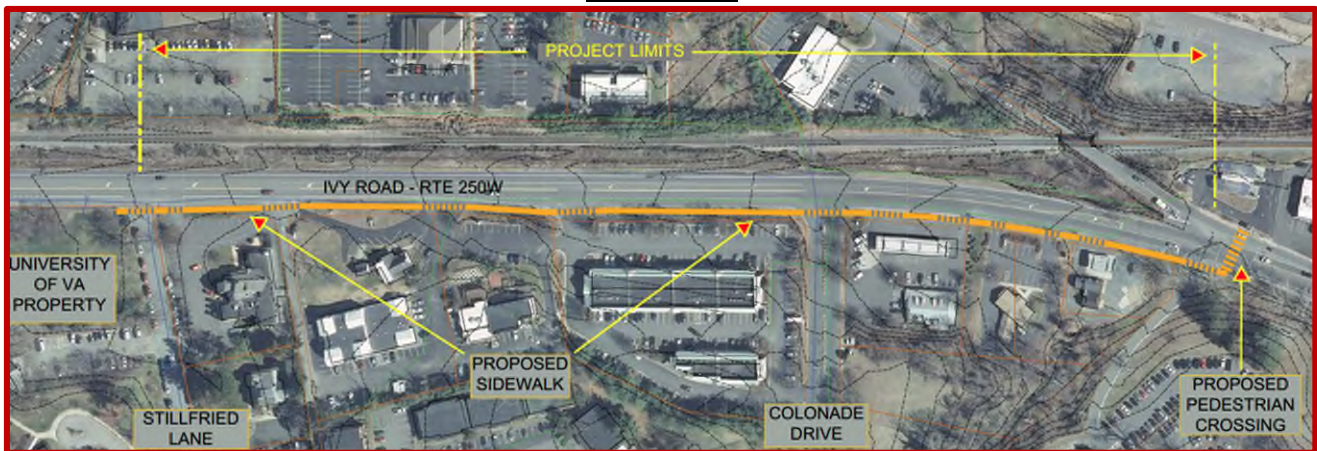
Those County staff most likely to be impacted by new policies – if not already on one of the teams – will be invited to participate in the development process through opportunities for review and input. Once finalized (anticipated by the end of FY22), the new policies will be introduced to all County staff, with an emphasis on direct engagement with the staff most impacted.

## Sidewalk Construction Projects Update

FES has two major sidewalk projects currently in construction in four locations around Albemarle County. A \$5M project spans three sites: East Rio Road, Avon Street and Route 250 East near Crozet. An at-grade flashing crosswalk on Route 250 will provide a safe crossing to the Blue Ridge Shopping Center for the many residents north of this major commuter road. A \$3.16M project on Ivy Road will provide a lengthy connection from the City of Charlottesville's network to new sidewalk on the far west end of the road. New sidewalks, curb and gutter, painted crosswalks, and ADA-compliant ramps will be placed at all sites.

Both projects began construction in October. The Ivy Road project will be complete by June of 2022 and is being managed by Walter Harris IV. The Rio Rd./Avon St./Rt. 250 Rockfish Gap Pike project will be complete by August of 2022 and is being managed by Matt Wertman. Both projects will increase connectivity for County residents and provide a much safer environment for pedestrians in our community.

**Ivy Sidewalk**



**Rt.250 Rockfish Gap Pike At-Grade Crosswalk**





**Erosion & Sediment Control Along Rt. 250**



**Clearing & Grading Along Rio Road**



**New Sidewalk & ADA Ramp on Ivy Road**



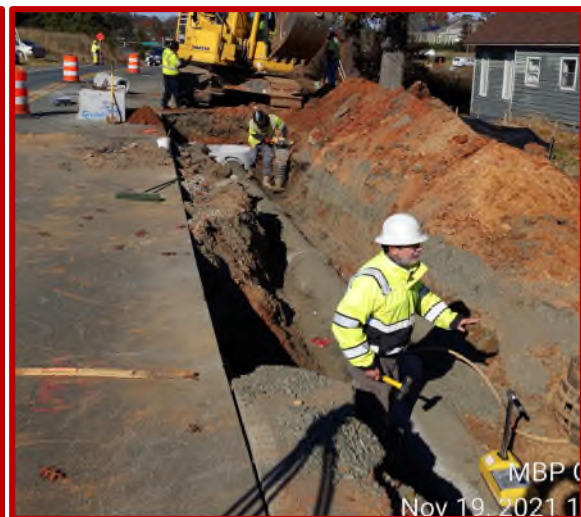
**New Sidewalk on Ivy Road**



**New Drainage Structure on Ivy Road**



**New Storm Water Pipe on Rio Road**





# Community Initiatives

## Love Albemarle – Fall Litter Cleanup Events

This fall, over 1,000 pounds of litter picked up by over 90 community members and staff at three locations in the County. Those statistics sum up this fall's "Love Albemarle" events to pick up litter from roadsides, riverbanks, and dump sites. Many people noticed an increase in litter in the early days of the pandemic. So, partly inspired by other litter pick-up efforts – by school groups, Yancey Community Center, and more – Facilities and Environmental Services rallied an inter-departmental group of local government staff this year to come up with our own response to the litter issue.

Working with staff from the Community and Public Engagement office (CAPE), Office of Equity and Inclusion, Parks and Recreation, Community Development, and Albemarle County Public Schools, we created three events in three of the four county quadrants and focused on a different type of litter for each event: Milton Boat Landing – blueway and greenway litter; Rio Mills Road/Brook Hill River Park – large appliance dumping; and roadside litter in Keene, Esmont and Scottsville. Planning out the logistics and communications took concerted effort on the part of the entire team.



Each event had a staff "champion" who, with significant help from others on the team, organized the event's logistics. Our talented colleagues in CAPE made sure the word got out to Albemarle residents to attract as many volunteers as possible and to greet them with the "Let's Talk Albemarle" van. We also reached out to local non-profits like the Rivanna Conservation Alliance in order to amplify its litter pickup efforts. Additional planning and logistical support for this County effort came from Keep Virginia Beautiful, the Board of Supervisors' Solid Waste Alternatives Advisory Committee, Rivanna Solid Waste Authority, and VDOT.

While picking up litter can be a dirty job, the photos below illustrate that working alongside our neighbors show that *Love Albemarle* is actually kind of fun too. The fall events were able to focus on the southern, northern, and eastern quadrants of the county. We are already planning for a spring event for the western quadrant.



## Native Plants Program

If you've been to the McIntire County Office Building lately, you've probably noticed that the landscaping vegetation theme has shifted away from traditional landscapes, such as boxwood shrubs, and towards a more colorful and "natural" look. FES has been deliberate in installing plants that are native to Albemarle County and the Piedmont region of Virginia. What you likely *don't* know is that these installations are a part of a more comprehensive initiative. The goal of the Native Plant Program – led by our own Repp Glaettli and in coordination with many regional and local partners – is to reintroduce native plant communities into our built landscapes and help educate our community members about their importance.



Native plant communities are the foundation of our natural environment. They support biodiversity, strengthen ecosystems, sequester carbon (helping to mitigate climate change), increase infiltration of rainwater into the soil, and support pollinators and birds. Native plants are also good for people and their pocketbooks – resulting in beautiful landscapes, generally requiring less maintenance, and creating an historic sense of place.

We have developed that Native Plant Program over the last decade and, today, it includes the following elements:

- a searchable online [native plant database](#)
- the [Northern Piedmont Native Plant Guide](#)
- additional educational resources for landscape designers, property owners, and the general public
- opportunities for public involvement
- efforts to increase the availability and accessibility of native plants
- a growing number of native plant community installations and demonstration landscapes
- a policy for the use of native plants on County properties



During this past year, staff have engaged in numerous activities to further this program. We have partnered with the nonprofit group [Code for Charlottesville](#) to begin updates and improvements to the native plant database. In addition, staff incorporated native plant education into campus tours and local professional training. Lastly, staff designed and oversaw the installation of three new demonstration landscapes – at Yancey School Community Center, at Charlotte Humphris Park, and behind the auditorium at COB-McIntire – and augmented many existing landscapes. This work was completed with assistance from community volunteers and staff. Over 70 species of locally native plants were used to improve County landscape projects.

The Native Plant Program brings to fruition many of the objectives and strategies called for in the Comprehensive Plan, the Biodiversity Action Plan, and the Climate Action Plan. Repp and others will continue to advance the various tools and activities described above to promote the use of native plants throughout the community.

For more information about the Native Plant Program, visit [www.albemarle.org/nativeplants](http://www.albemarle.org/nativeplants).



# New Employee Spotlight

## Mike Stumbaugh, Chief of Transportation Projects



Mike started in late November as the Deputy Chief of Transportation in the FES Facilities Planning & Construction division. Mike comes to us from the University of Virginia where he was the Assistant Director for Facilities & Operations - Parking & Transportation, and was responsible for overseeing capital planning, operations and maintenance for parking inventory which included over 100 parking garages and parking lots. Mike previously worked for Albemarle County as a Senior Project Manager and Interim Director of what was then the General Services department. Mike has a BS in Mechanical Engineering from the University of Virginia, and a Master of Engineering Management from George Washington University.

Mike has jumped in with both feet and is overseeing current projects in construction and the design/planning of future projects. In his free time, Mike enjoys visiting national parks and taking scenic pictures.

# Summary - Active Capital Projects

Monday, January 10, 2022

2:54:09 PM

## Local Government

Project Name	Magisterial District	ProjectPhase	% Complete	Budget
Biscuit Run Phase 1a	Scottsville	Design	50%	\$2,171,755
COB 5th Roof Replacement	Scottsville	Design	40%	\$2,257,441
COB McIntire UPS Replacement	NA	Design	50%	\$200,000
COB McIntire Window Replacement	NA	Construction	60%	\$1,681,791
Courts Complex Addition & Renovation	NA	Design	20%	\$30,993,225
Facilities Master Plan Study	Multiple	Design	48%	\$159,390
Scottsville Comm Center HVAC Replacement	Scottsville	Construction	90%	\$314,260
Southern Convenience Center	Samuel Miller	Design	10%	\$1,084,240

Total: \$38,862,102

## NIFI

Project Name	Magisterial District	ProjectPhase	% Complete	Budget
NIFI - Albemarle Jouett Greer SRTS	Jack Jouett	Contractor Bid	50%	\$1,000,679
NIFI - The Square	White Hall	Design	68%	\$1,510,000

Total: \$2,510,679

## Schools

Project Name	Magisterial District	ProjectPhase	% Complete	Budget
Air Handler-Monticello High	Scottsville	Initiation	0%	\$390,000
Broadus Wood Well Upgrades	Rio	Construction	90%	\$469,350
Crozet Elementary Additions & Improvements	White Hall	Construction	70%	\$21,250,000
Elevator Maintenance - Greer	Jack Jouett		30%	\$80,000
FY22 Electrical Upgrades		Design	45%	\$185,000
FY22 Restroom Upgrades HOL WAL	Multiple	Design	15%	\$200,000
FY22 Schools Summer Roofing - WAHS Phase 1 & Phase 2, Burley Addition, Walton Phase 2	Multiple		45%	\$2,965,150
Learning Cottage-Monticello High	Scottsville	Construction	70%	\$105,000
Mountain View Addition and Renovations	Scottsville	Design	10%	\$5,892,576

## Schools

Project Name	Magisterial District	ProjectPhase	% Complete	Budget
RTU Upgrades-Woodbrook, Stony Point, Brownsville	Multiple	Contractor Bid	20%	\$350,000
Scottsville Elementary Classroom Addition & Gym 2019	Scottsville	Construction	99%	\$10,304,120
Tech Lab HVAC - Henley and Journey	Multiple	Design	25%	\$240,000
WAHS Softball Restrooms/ADA	White Hall	Construction	75%	\$829,000
			Total:	\$43,260,196

## Transportation

Project Name	Magisterial District	ProjectPhase	% Complete	Budget
Berkmar Bike Ped Improvements	Rio	Design	18%	\$2,890,026
Earlsville Road_Reas Ford Study	Rio	Design	30%	\$350,000
Eastern Avenue Preliminary Study	White Hall	Design	100%	\$275,000
Old Lynchburg Sidewalk Improvements	Samuel Miller	Design	0%	\$75,000
Sidewalk - Commonwealth/Dominion	Jack Jouett	Design	25%	\$3,336,224
Sidewalk - Ivy Road	Multiple	Construction	40%	\$3,078,000
Sidewalk - Library Avenue	White Hall	Design	57%	\$0
Sidewalk - Rio Road, Avon Street & Rt. 250 West-Crozet	Multiple	Construction	93%	\$5,005,209
			Total:	\$15,009,459

## Water Resources

Project Name	Magisterial District	ProjectPhase	% Complete	Budget
Woodbrook Lagoon Maintenance and Repairs	Rivanna	Initiation	2%	\$160,000
			Total:	\$160,000
				\$99,802,435



# Summary - Active Capital Projects

Monday, January 10, 2022

2:53:02 PM

## Jack Jouett

Project Name	Project Type	ProjectPhase	% Complete	Budget
NIFI - Albemarle Jouett Greer SRTS	NIFI	Contractor Bid	50%	\$1,000,679
Elevator Maintenance - Greer	Schools		30%	\$80,000
Sidewalk - Commonwealth/Dominion	Transportation	Design	25%	\$3,336,224
Total:				\$4,416,903

## Rio

Project Name	Project Type	ProjectPhase	% Complete	Budget
Broadus Wood Well Upgrades	Schools	Construction	90%	\$469,350
Berkmar Bike Ped Improvements	Transportation	Design	18%	\$2,890,026
Earlsville Road_Reas Ford Study	Transportation	Design	30%	\$350,000
Total:				\$3,709,376

## Rivanna

Project Name	Project Type	ProjectPhase	% Complete	Budget
Woodbrook Lagoon Maintenance and Repairs	Water Resources	Initiation	2%	\$160,000
Total:				\$160,000

## Samuel Miller

Project Name	Project Type	ProjectPhase	% Complete	Budget
Southern Convenience Center	Local Government	Design	10%	\$1,084,240
Old Lynchburg Sidewalk Improvements	Transportation	Design	0%	\$75,000
Total:				\$1,159,240

## Scottsville

Project Name	Project Type	ProjectPhase	% Complete	Budget
Biscuit Run Phase 1a	Local Government	Design	50%	\$2,171,755
COB 5th Roof Replacement	Local Government	Design	40%	\$2,257,441
Scottsville Comm Center HVAC Replacement	Local Government	Construction	90%	\$314,260
Air Handler-Monticello High	Schools	Initiation	0%	\$390,000
Learning Cottage-Monticello High	Schools	Construction	70%	\$105,000
Mountain View Addition and Renovations	Schools	Design	10%	\$5,892,576
Scottsville Elementary Classroom Addition & Gym 2019	Schools	Construction	99%	\$10,304,120
			Total:	\$21,435,152

## White Hall

Project Name	Project Type	ProjectPhase	% Complete	Budget
NIFI - The Square	NIFI	Design	68%	\$1,510,000
Crozet Elementary Additions & Improvements	Schools	Construction	70%	\$21,250,000
WAHS Softball Restrooms/ADA	Schools	Construction	75%	\$829,000
Eastern Avenue Preliminary Study	Transportation	Design	100%	\$275,000
Sidewalk - Library Avenue	Transportation	Design	57%	\$0
			Total:	\$23,864,000

## Multiple

Project Name	Project Type	ProjectPhase	% Complete	Budget
Facilities Master Plan Study	Local Government	Design	48%	\$159,390
FY22 Restroom Upgrades HOL WAL	Schools	Design	15%	\$200,000
FY22 Schools Summer Roofing - WAHS Phase 1 & Phase 2, Burley Addition, Walton Phase 2	Schools		45%	\$2,965,150
RTU Upgrades-Woodbrook, Stony Point, Brownsville	Schools	Contractor Bid	20%	\$350,000
Tech Lab HVAC - Henley and Journey	Schools	Design	25%	\$240,000
Sidewalk - Ivy Road	Transportation	Construction	40%	\$3,078,000
Sidewalk - Rio Road, Avon Street & Rt. 250 West-Crozet	Transportation	Construction	93%	\$5,005,209

Total: \$11,997,749

## NA

Project Name	Project Type	ProjectPhase	% Complete	Budget
COB McIntire UPS Replacement	Local Government	Design	50%	\$200,000
COB McIntire Window Replacement	Local Government	Construction	60%	\$1,681,791
Courts Complex Addition & Renovation	Local Government	Design	20%	\$30,993,225

Total: \$32,875,016

---

\$99,617,435



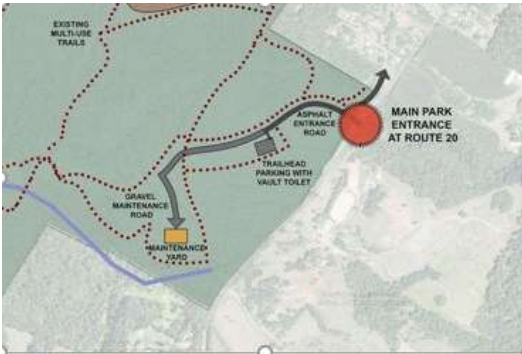
Capital Projects Report - Facilities and Environmental Services

Local Government

Biscuit Run Phase 1a

Project Scope

Biscuit Run Park is a nearly 1,200 acre property located in Albemarle County. The Commonwealth of Virginia acquired the property in 2009 and announced a partnership with Albemarle County to open Biscuit Run park to the public. The park partnership is the first of its kind in Albemarle’s development area and will provide high-quality recreational opportunities for Albemarle County and the surrounding communities. A minimum of 80% of the park will remain forested, all sensitive natural heritage resources will be protected, and management concerns like invasive species will be addressed. Phase 1a of the Biscuit Run project will consist of a New Rte. 20 Park Entrance, Paved Access Drive, Trailhead Parking and Restrooms.



Project Update

County staff is currently working with the AE to finalize drawings based on VDOT's comments and concerns with the design. Additional VDOT requirements may have had significant budget and schedule impacts. Team is planning to engage with a 3rd party construction estimating firm to provide updated project cost estimates.

Current Phase:	Design	Budget:	\$2,171,755.00
% Complete:	50%	PO Balance:	\$177,076.40
Design % Complete:	85%	Paid to Date:	\$311,178.60
Construction % Complete:	0%	Balance:	\$1,683,500.00
Updated:	1/7/2022		
Managed By:	Steve Hoffmann		
Substantial Completion:	8/17/2022		

Capital Projects Report - Facilities and Environmental Services

Local Government

COB 5th Roof Replacement

Project Scope

The Partial Roof Replacement at the County Office Building 5th Street will entail the removal of all the existing flat EPDM roof systems, and replacement with the installation of a new fully adhered EPDM roof system over tapered insulation. Roof work will also include repairs to the existing skylight features and a full weight load assessment of the roof structural elements for future potential solar array installation. There is a total of 92,300sf of roof to be replaced at this facility.

Project Update

Facilities and Operations & FP&C are utilizing Grimm and Parker Architect’s Term Contract for the roof design and full inspection services. The AE Task Order is fully executed and the AE is currently working on Design Documents. Project is currently on track to be in out for Bid late January 2022. Construction scheduled to begin in March and be substantially completed Mid June of 2022.



Current Phase:	Design	Budget:	\$2,257,441.00
% Complete:	40%	PO Balance:	\$90,220.00
Design % Complete:	85%	Paid to Date:	\$46,426.00
Construction % Complete:	0%	Balance:	\$2,120,795.00
Updated:	1/7/2022		
Managed By:	Steve Hoffmann		
Substantial Completion:	6/20/2022		

# Capital Projects Report - Facilities and Environmental Services

## Local Government

### COB McIntire UPS Replacement

#### Project Scope

Replacement of the existing Uninterrupted Power Source (UPS) backup battery for the IT system and installation of a second UPS system. During a power outage, the UPS systems will provide power to the main computer servers until the generator comes on line and/or if the generator fails to start. It is a redundant system to ensure data is not lost.

#### Project Update

The A/E Task Order was approved and the final layout for the UPS has been approved by the owner. The owner requested a change in the project scope to add a second UPS which required additional investigation and design work by the A/E. This work has been completed and the design documents have been completed. The Cooperative Contract has been approved for purchase of the UPS units. SHI (UPS vendor) has advised a lead time of 14-16 weeks. Process of coordinating procurement for the Power Distribution Units (PDU's, specialized plug strips) required to allow redundancy for the two UPS has begun and this cooperative agreement will also cover the labor to install the UPS and PDU's as well as all associated electrical work to complete this project. A meeting was held with the vendor and contractor on 12/17 regarding installation of the UPS and a cost estimate for the work. As soon as the estimate is completed, A/E and send it for in-house review will begin.



<b>Current Phase:</b>	Design	<b>Budget:</b>	\$200,000.00
<b>% Complete:</b>	50%	<b>PO Balance:</b>	\$116,550.04
<b>Design % Complete:</b>	99%	<b>Paid to Date:</b>	\$0.00
<b>Construction % Complete:</b>	0%	<b>Balance:</b>	\$200,000.00
<b>Updated:</b>	1/7/2022		
<b>Managed By:</b>	Neale Craft		
<b>Substantial Completion:</b>	3/15/2022		



# Capital Projects Report - Facilities and Environmental Services

## Local Government

### COB McIntire Window Replacement

#### Project Scope

The windows, installed in 1979-1980 are inefficient, are well beyond their expected life span and are beginning to fail. 390 windows will be replaced along with portions of the building envelope that surround the windows. This will result in a more energy efficient building while maintaining the historic character of the facility.

#### Project Update

The window order has been submitted and the design team was given updated delivery dates from the manufacturer of early-February. Proposed options for possible window storage locations on site have been presented to the Chief of Facilities and Operations – Team will meet this week to discuss and finalize storage container locations. Construction is slated to begin March 14, 2022. Substantial Completion slated for June 30, 2022 for a 112 day construction duration.



<b>Current Phase:</b>	Construction	<b>Budget:</b>	\$1,681,790.81
<b>% Complete:</b>	60%	<b>PO Balance:</b>	\$1,159,122.45
<b>Design % Complete:</b>	100%	<b>Paid to Date:</b>	\$162,138.20
<b>Construction % Complete:</b>	22%	<b>Balance:</b>	\$360,530.16
<b>Updated:</b>	1/7/2022		
<b>Managed By:</b>	Steve Hoffmann		
<b>Substantial Completion:</b>	6/30/2022		

# Capital Projects Report - Facilities and Environmental Services

## Local Government

### Courts Complex Addition & Renovation

#### Project Scope

This project will expand capacity and modernize Court facilities to support projected space needs through 2035, and will be conducted in two phases. Phase I: In partnership with the City of Charlottesville, construct a new co-located General District Court facilities and renovate the historic portion of the Levy Opera House to accommodate the Albemarle Commonwealth Attorney's office. Phase II: renovation and modernization of the historic Albemarle County courts complex to house the Albemarle County Circuit Court.

#### Project Update

Design firm Fentress Architects has started design development drawings as we continue to review additional value engineering alternatives. Design team is ready to submit the site plan for the East Site (General District Court). A presentation is planned to the Charlottesville Board of Architectural Review on February 15th, 2022.



<b>Current Phase:</b>	Design	<b>Budget:</b>	\$30,993,225.00
<b>% Complete:</b>	20%	<b>PO Balance:</b>	\$3,555,052.96
<b>Design % Complete:</b>	48%	<b>Paid to Date:</b>	\$1,919,389.46
<b>Construction % Complete:</b>	0%	<b>Balance:</b>	\$25,518,782.58
<b>Updated:</b>	1/7/2022		
<b>Managed By:</b>	Walter Harris		
<b>Substantial Completion:</b>			

Capital Projects Report - Facilities and Environmental Services

Local Government

Facilities Master Plan Study

Project Scope

The purpose of the Facilities Master Plan is to assess existing and future space needs (20-year window) of County functions, and make recommendations to ensure adequate spaces. Assessment will also include opportunities to improve customer interface. Recommendations may include additions to assorted County facilities, potential space leasing, and/or new construction, but will account for space-saving opportunities associated with employee teleworking.

Project Update

First phase to re-evaluate departmental staffing projection has been completed. The next phase, consisting of department level interviews and development of initial space needs projections, will commence in February, 2022.



Current Phase:	Design
% Complete:	48%
Design % Complete:	48%
Construction % Complete:	0%
Updated:	1/6/2022
Managed By:	Tyler Gifford
Substantial Completion:	6/30/2022

Budget:	\$159,390.00
PO Balance:	\$12,090.96
Paid to Date:	\$92,228.37
Balance:	\$55,070.67



Capital Projects Report - Facilities and Environmental Services

Local Government

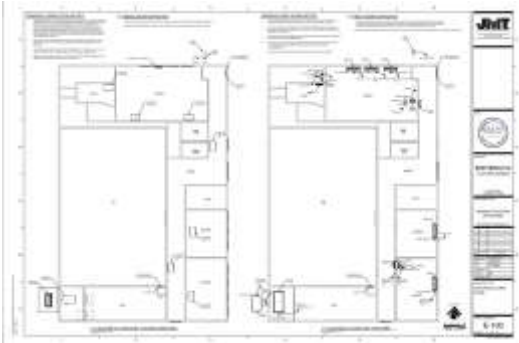
Scottsville Comm Center HVAC Replacement

Project Scope

This facility originally constructed in 1959, is comprised of 13,000 SF containing a gymnasium, cafeteria, two classrooms, restrooms, and an office within the larger building. The facility has outdated HVAC that has reached the end of it's useful life span and requires replacement. Some of this equipment is 35+ years old and has become increasingly unreliable and expensive to repair. A decision was made by Albemarle County Parks & Rec. to replace existing mechanical systems with a high efficiency climate control system.

Project Update

Phase 2 construction is 90 percent complete. All of the mechanical equipment has been installed and scheduled for the manufacturer's representatives to start up the equipment on the 13th of January. Once completed, the contractor will have the Testing and Balance report completed and the engineer and I will meet to complete the punch list. We anticipate achieving substantial completion by Jan 17th.



Current Phase:	Construction	Budget:	\$314,260.00
% Complete:	90%	PO Balance:	\$100,705.95
Design % Complete:	100%	Paid to Date:	\$193,229.05
Construction % Complete:	85%	Balance:	\$20,325.00
Updated:	1/10/2022		
Managed By:	Walter Harris		
Substantial Completion:	1/17/2022		

# Capital Projects Report - Facilities and Environmental Services

## Local Government

### Southern Convenience Center

#### Project Scope

In coordination with the Rivanna Solid Waste Authority, design and construction of a solid-waste convenience center to service Southern Albemarle County. Budget includes all costs associated with on-site amenities, including the purchase of containers and compactors. The design includes a bid additive item to extend the bounds of the project to the east, to accommodate an additional household waste compactor, should demand for this service element be high.

#### Project Update

RSWA's term contract engineer has been required by the County Engineer to add unanticipated stormwater features. A revised opinion of probable cost for construction to reflect these changes is anticipated in mid-January. RSWA is proceeding with procurement of containers, compactors and additional hauling truck. Market conditions for this equipment is significantly more expensive due to an approximate 150% increase in the price of steel. Anticipate a request for an appropriation of additional funds in February, 2022. Lead time on equipment is a variable that will impact the timing of opening of the facility.



<b>Current Phase:</b>	Design	<b>Budget:</b>	\$1,084,240.00
<b>% Complete:</b>	10%	<b>PO Balance:</b>	\$0.00
<b>Design % Complete:</b>	30%	<b>Paid to Date:</b>	\$84.00
<b>Construction % Complete:</b>	0%	<b>Balance:</b>	\$1,084,153.00
<b>Updated:</b>	1/7/2022		
<b>Managed By:</b>	Lance Stewart		
<b>Substantial Completion:</b>			

# Capital Projects Report - Facilities and Environmental Services

## NIFI

### NIFI - Albemarle Jouett Greer SRTS

#### Project Scope

Following an extensive community-driven process, the Places29-Hydraulic Community Advisory Committee selected the Albemarle-Jouett-Greer School Pedestrian Connections as one of their priority projects. The critical need for this crosswalk was also identified in the "Safe Routes to School (SRTS) Travel Plan - Greer Elementary Jouett Middle" dated May 2012. The CAC used a portion of their NIFI allocation to leverage a VDOT Safe Routes to School grant for the design and construction of the project. Scope of work includes approximately 2015 ft of pedestrian improvements throughout the complex, including 485 ft of concrete sidewalk (8' wide); 1430 ft of multi-use trail (10' wide); and 100 ft of pedestrian crosswalks. Stormwater management for the additional impervious area will also be provided.



#### Project Update

VDOT's Civil Rights division has found the low Bidder's (Finley Asphalt) "Good Faith Efforts" to meet Disadvantaged Business Enterprise (DBE) goals to be inadequate. Finley Asphalt has requested a Reconsideration Panel Discussion for further review of the contractor's Efforts to meet the DBE goals. FP&C has assembled all bid material and additional Contractor documentation for a review pamphlet to be provided to the Administrative Reconsideration Panel. This panel meeting, originally planned for the week of January 3rd, has been postponed till January 17th because of inclement weather and VDOT scheduling conflicts. The Contractor will present material to the panel to clarify their bid documents including additional back-up documentation showing their repeated attempts to meet the DBE goals. County will then await VDOT approval to move forward on issuance of NOIA Mid - Late January. Contractor Notice to Proceed is slated to be issued Mid February with Construction starting shortly thereafter. This project will be Substantially complete 120 days after the commencement of work.

<b>Current Phase:</b>	Contractor Bid	<b>Budget:</b>	\$1,000,678.65
<b>% Complete:</b>	50%	<b>PO Balance:</b>	\$3,928.62
<b>Design % Complete:</b>	100%	<b>Paid to Date:</b>	\$146,940.71
<b>Construction % Complete:</b>	0%	<b>Balance:</b>	\$848,730.67
<b>Updated:</b>	1/7/2022		
<b>Managed By:</b>	Steve Hoffmann		
<b>Substantial Completion:</b>	7/3/2022		

# Capital Projects Report - Facilities and Environmental Services

## NIFI

### NIFI - The Square

#### Project Scope

Following an extensive community-driven process, the Crozet Community Advisory Committee selected The Square and Oak Street Improvements as one of their priority projects. The Square is a focal point of Downtown Crozet and Oak Street will provide a critical connection to Library Avenue. Therefore the CAC used their NIFI allocation to leverage a Virginia Department of Transportation (VDOT) Revenue Sharing funds for the design and construction of the project. This locally administered Revenue Sharing project will improve the existing public street and on-street parking, including: altering traffic flow direction and/or ingress/egress at Crozet Avenue, formalizing and providing angled parking along both sides, new sidewalk in front of the businesses, improving ADA accessibility, grading/drainage improvements to prevent flooding of the businesses east of the alley intersection, and drainage system to convey storm runoff to Oak Street along with street, sidewalk and drainage improvements to Oak Street.



#### Project Update

After reviewing VDOT's comments for the design waiver request, the project team has decided to engage the local business owners to gather input on the design options related to the alley off The Square. FP&C Staff are coordinating with the Economic Development Office for the planning of those meetings. The project team also responded to VDOT's initial comments for the ROW authorization phase and re-submitted the ROW authorization packet to VDOT on 12/22 for their review.

<b>Current Phase:</b>	Design	<b>Budget:</b>	\$1,510,000.00
<b>% Complete:</b>	68%	<b>PO Balance:</b>	\$102,203.41
<b>Design % Complete:</b>	80%	<b>Paid to Date:</b>	\$172,601.99
<b>Construction % Complete:</b>	0%	<b>Balance:</b>	\$1,235,194.60
<b>Updated:</b>	1/7/2022		
<b>Managed By:</b>	Matt Wertman		
<b>Substantial Completion:</b>	5/12/2023		



# Capital Projects Report - Facilities and Environmental Services

## Schools

### Air Handler-Monticello High

**Project Scope**

Replacement of the original twelve (12) air handler units at Monticello High School. The work will occur over three summers, beginning in 2022.

**Project Update**

During initiation and discussions with equipment vendor it was identified the project could not be designed, bid and constructed within the budget and time frame provided by ACPs Building Services. Staff sent MJT initial comments and they are preparing final fee proposal, expect to receive proposal in January 2022 then issue a task order. Design will be completed to have documents ready for potential CIP funding approval and bidding in the FY22/23 fiscal year.

<b>Current Phase:</b>	Initiation	<b>Budget:</b>	\$390,000.00
<b>% Complete:</b>	0%	<b>PO Balance:</b>	\$0.00
<b>Design % Complete:</b>	0%	<b>Paid to Date:</b>	\$0.00
<b>Construction % Complete:</b>	0%	<b>Balance:</b>	\$390,000.00
<b>Updated:</b>	1/6/2022		
<b>Managed By:</b>	Tyler Gifford		
<b>Substantial Completion:</b>	8/8/2025		

# Capital Projects Report - Facilities and Environmental Services Schools

## Broadus Wood Well Upgrades

### Project Scope

This project is to provide adequate domestic water supply at Broadus Wood Elementary School. The existing well system needs to be replaced and upgraded to meet current Virginia Health Department (VHD) requirements. The goal of this project is to abandon the existing system, including the water storage tank, the pump house, chemical system, and associated plumbing lines. New improvements include a new water storage tank, new booster pumps, well casing improvements, and a new pump house.

### Project Update

The new pump house and water tank have been installed and most of the plumbing connections have been made. The Contractor has a few remaining electrical connections. The original shutdown and tie-in to the building was delayed due to winter weather and power outages. The next scheduled attempt will be the weekend of 2/4.

<b>Current Phase:</b>	Construction	<b>Budget:</b>	\$469,350.00
<b>% Complete:</b>	90%	<b>PO Balance:</b>	\$214,784.91
<b>Design % Complete:</b>	100%	<b>Paid to Date:</b>	\$239,120.09
<b>Construction % Complete:</b>	85%	<b>Balance:</b>	\$15,445.00
<b>Updated:</b>	1/7/2022		
<b>Managed By:</b>	Matt Wertman		
<b>Substantial Completion:</b>	12/31/2021		

# Capital Projects Report - Facilities and Environmental Services

## Schools

### Crozet Elementary Additions & Improvements

#### Project Scope

The Western County Feeder Pattern is a designated growth area in the county; additional capacity is needed to accommodate this anticipated growth. Crozet Elementary School is currently over capacity and additional students are anticipated. Additions and renovations will take place. This project includes an estimated 28,000 SF addition to the building, as well as making improvements to the existing building and site. The additions will include 16 classrooms, 3 smaller resource classrooms, 2 offices, a faculty workroom, and various support spaces. Improvements to the existing building will include improvements to existing classrooms, improvements to the kitchen, stage and cafeteria, and improvements to existing administration, support spaces, and toilets. Site improvements will include outdoor learning areas, new and expanded bus drop-off, additional parking, additional playground equipment, and the replacement of a paved play area due to the likely location of the addition.



#### Project Update

Progress on the kitchen addition continues to proceed at a steady pace. Drywalling is complete and the Contractor is working to install some of the larger kitchen equipment, such as the walk-in coolers and kitchen hood. MEP rough-in on the movement addition is mostly complete, and the Contractor is currently working to complete exterior sheathing. Steel on the classroom was delayed due to some supply chain issues and then subsequent winter weather. The steel is anticipated to be completed by the week of 1/10. The slab on deck pours are tentatively scheduled for the following week. The Contractor completed some additional targeted interior renovations during the Winter Break, including half of the restroom renovations and replacing some interior windows that overlook the gym.

<b>Current Phase:</b>	Construction	<b>Budget:</b>	\$21,250,000.00
<b>% Complete:</b>	70%	<b>PO Balance:</b>	\$10,568,819.00
<b>Design % Complete:</b>	100%	<b>Paid to Date:</b>	\$9,161,667.08
<b>Construction % Complete:</b>	50%	<b>Balance:</b>	\$1,519,513.41
<b>Updated:</b>	1/7/2022		
<b>Managed By:</b>	Matt Wertman		
<b>Substantial Completion:</b>	8/5/2022		

# Capital Projects Report - Facilities and Environmental Services

## Schools

### Elevator Maintenance - Greer

**Project Scope**

Maintenance and safety upgrades to the elevator serving the school. Controls and safety features will be upgraded to current standards.

**Project Update**

Contract was sent to vendor, the Purchase Order (PO) request was submitted and approved. Material delivery is expected before end of school year. All work will be completed in the summer of 2022.



<b>Current Phase:</b>		<b>Budget:</b>	\$80,000.00
<b>% Complete:</b>	30%	<b>PO Balance:</b>	\$72,350.00
<b>Design % Complete:</b>	100%	<b>Paid to Date:</b>	\$0.00
<b>Construction % Complete:</b>	0%	<b>Balance:</b>	\$80,000.00
<b>Updated:</b>	1/7/2022		
<b>Managed By:</b>	Neale Craft		
<b>Substantial Completion:</b>			



# Capital Projects Report - Facilities and Environmental Services

## Schools

### FY22 Electrical Upgrades

#### Project Scope

Removal and replacement of the old, outdated, Main Service Switchboard and Motor Control Center at Western Albmarle High School. This system assists in the prevention and protection of short circuiting of specific circuits without interruption to the entire electrical system.



#### Project Update

Due to ongoing manufacturing and shipping delays with the pandemic the electrical components for WAHS have been procured directly with a vendor, Schneider Electric, on 12/15. The Engineer, SRP, has finalized the construction plan documents for bidding and is working on finalizing the specifications. The project is anticipated to bid the installation scope of work by the beginning of February with construction to occur over Summer 2022.

Current Phase:	Design	Budget:	\$185,000.00
% Complete:	45%	PO Balance:	\$111,482.00
Design % Complete:	90%	Paid to Date:	\$12,547.00
Construction % Complete:	0%	Balance:	\$60,971.00
Updated:	1/10/2022		
Managed By:	Neale Craft		
Substantial Completion:	8/5/2022		

# Capital Projects Report - Facilities and Environmental Services Schools

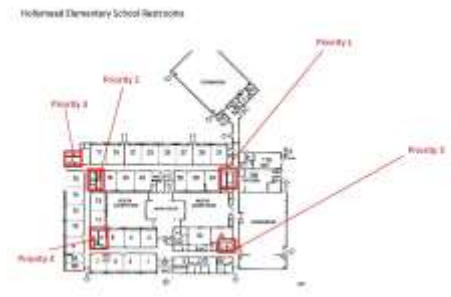
## FY22 Restroom Upgrades HOL WAL

### Project Scope

Replacement of existing ceramic tile flooring and wall finishes with new ceramic tile finishes at Hollymead Elementary and Walton Middle School.

### Project Update

The A/E is underway with work on design. Bidding will occur during Winter '22, with a construction contract executed in Spring '22 and construction occurring during Summer '22.



**Current Phase:** Design  
**% Complete:** 15%  
**Design % Complete:** 20%  
**Construction % Complete:** 0%  
**Updated:** 1/3/2022  
**Managed By:** Montie Breeden  
**Substantial Completion:**

**Budget:** \$200,000.00  
**PO Balance:** \$37,906.00  
**Paid to Date:**  
**Balance:** \$162,094.00

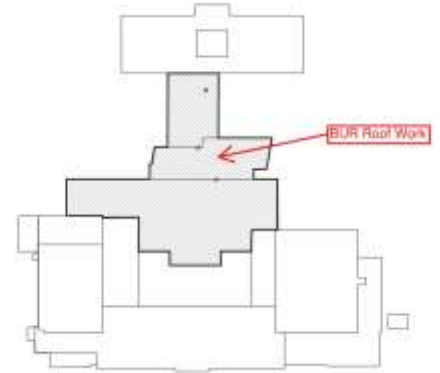
# Capital Projects Report - Facilities and Environmental Services

## Schools

### FY22 Schools Summer Roofing - WAHS Phase 1 & Phase 2, Burley Addition, Walton Phase 2

#### Project Scope

This summer's Roof Projects are the partial roof replacements at three schools: Western Albemarle High School, Burley Middle School and Walton Middle School. Both the Western Albemarle High School Phase 1 and Walton Phase 2 work delayed from the summer of 2021 will be included in this summer's work. At all three schools the work will entail removal of existing roof systems, and the installation of a new fully adhered EPDM roof system over tapered insulation. There is a total of 160,183sf of roof to be replaced this summer with WAHS Phase 1 roof receiving 45,518sf of replacement while Phase 2 will receive 52,702sf of replacement. Burley Addition is the smallest roof at 19,027sf while Walton Phase 2 will be the most difficult with a significant amount of asbestos abatement and built-up roof removal for 42,936sf.



#### Project Update

ACPS and FP&C are utilizing Grimm and Parker Architect's AE Roof Design Term Contract for the (4) Roof Replacement projects slated for the Summer of 2022. AE Task Order was fully executed and Notice To Proceed was issued mid November. AE started site investigation and design work, delivering preliminary documents to PM on 12/8. Bid Documents will be ready for advertisement mid January with contracts in place and construction set to begin once school lets out for the summer of 2022 in June. These projects will be substantially complete the first week of August 2022.

<b>Current Phase:</b>		<b>Budget:</b>	\$2,965,150.00
<b>% Complete:</b>	45%	<b>PO Balance:</b>	\$177,728.00
<b>Design % Complete:</b>	0%	<b>Paid to Date:</b>	\$20,776.00
<b>Construction % Complete:</b>	0%	<b>Balance:</b>	\$2,826,646.00
<b>Updated:</b>	1/7/2022		
<b>Managed By:</b>	Steve Hoffmann		
<b>Substantial Completion:</b>	9/5/2022		

# Capital Projects Report - Facilities and Environmental Services

## Schools

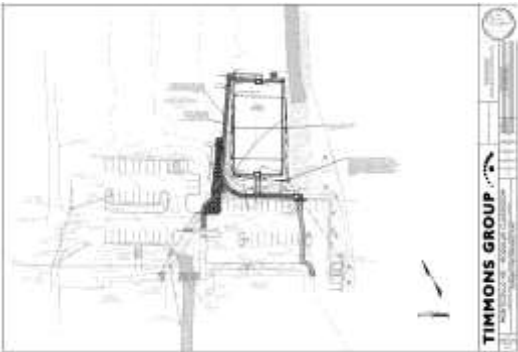
### Learning Cottage-Monticello High

#### Project Scope

ACPS is installing a Modular Learning Cottage at Monticello High School. These 18 trailers will provide 8 classroom spaces and 2 restroom areas.

#### Project Update

All trailers have been delivered and expected to be set by the week of January 10th. The project continues to have issues with getting the electrical components, the vendor has provided a tentative shipping date of Friday January 7th. Staff will provide ACPS a more definitive schedule for completion once the electrical components ship, but after receiving the electrical components can expect about four weeks of work to get the learning pods ready for inspection and occupancy.



<b>Current Phase:</b>	Construction	<b>Budget:</b>	\$105,000.00
<b>% Complete:</b>	70%	<b>PO Balance:</b>	\$0.00
<b>Design % Complete:</b>	100%	<b>Paid to Date:</b>	\$0.00
<b>Construction % Complete:</b>	40%	<b>Balance:</b>	\$105,000.00
<b>Updated:</b>	1/6/2022		
<b>Managed By:</b>	Tyler Gifford		
<b>Substantial Completion:</b>	2/18/2022		



# Capital Projects Report - Facilities and Environmental Services

## Schools

### Mountain View Addition and Renovations

#### Project Scope

This CIP project was approved to increase the size of the school, improve the outdoor spaces and provide parking to accommodate the current population of Mountain View Elementary. The project expands the cafeteria and adds four classrooms, a music room, an art classroom and additional auxiliary space for a total addition of 11,780 square feet. Site improvements include additional parking, enhancing outdoor learning spaces and playgrounds, and the removal of the mobile classroom units.

#### Project Update

The Master Plan design consisting of the potential Mountain View addition and additional new future school was presented to the School Board virtually on 12/2. Direction forward was provided by the School Board for the addition project and the AE team has progressed into the Design Document Phase. Pre-application meeting was held with Engineering in Community Development on 12/13. PM is currently working with AE to incorporate Pre-Qualification templates into the contract documents for GC bidding. Questions have been raised and are being addressed concerning additional funding being requested for construction. Construction slated to start early Fall of 2022.



<b>Current Phase:</b>	Design	<b>Budget:</b>	\$5,892,576.00
<b>% Complete:</b>	10%	<b>PO Balance:</b>	\$0.00
<b>Design % Complete:</b>	20%	<b>Paid to Date:</b>	\$0.00
<b>Construction % Complete:</b>	0%	<b>Balance:</b>	\$5,892,576.00
<b>Updated:</b>	1/7/2022		
<b>Managed By:</b>	Steve Hoffmann		
<b>Substantial Completion:</b>	9/1/2023		

# Capital Projects Report - Facilities and Environmental Services Schools

## RTU Upgrades-Woodbrook, Stony Point, Brownsville

### Project Scope

The replacement of existing variable air volume split system rooftop HVAC units with packaged units with Energy Recovery Wheels, including new electrical and controls, at Woodbrook, Stony Point and Brownsville schools.

### Project Update

Project was posted for bid on Thursday January 5th with bids due on Thursday, January 27th. Work will occur during the 2022 summer break.

Current Phase:	Contractor Bid	Budget:	\$350,000.00
% Complete:	20%	PO Balance:	\$0.00
Design % Complete:	100%	Paid to Date:	\$0.00
Construction % Complete:	0%	Balance:	\$350,000.00
Updated:	1/7/2022		
Managed By:	Tyler Gifford		
Substantial Completion:	8/5/2022		

# Capital Projects Report - Facilities and Environmental Services

## Schools

### Scottsville Elementary Classroom Addition & Gym 2019

#### Project Scope

The closing of Yancey ES added to the population of Scottsville Elementary School, requiring additional classroom learning space. This project will include a new gym, classroom addition and renovations in much of the school. The project will add 17,500 sf to the building as well as make improvements to the existing building and site. The additions will include 4 additional classrooms, 2 smaller resource classrooms, 2 offices, a gang bathroom, and a full-size gym. Improvements to the existing building will include repurposing the current gym into instructional space and other modernizations and renovations throughout the building to improve space for both students and staff. Site improvements will include outdoor learning areas and a septic system replacement.



#### Project Update

Currently, the contractor is working on completing the remaining site work. Overall they are 99% complete.

Current Phase:	Construction	Budget:	\$10,304,120.00
% Complete:	99%	PO Balance:	\$738,804.02
Design % Complete:	100%	Paid to Date:	\$8,952,563.46
Construction % Complete:	99%	Balance:	\$612,752.52
Updated:	1/7/2022		
Managed By:	Walter Harris		
Substantial Completion:	8/2/2021		

# Capital Projects Report - Facilities and Environmental Services

## Schools

### Tech Lab HVAC - Henley and Journey

#### Project Scope

The goal of this project is to provide design and construction services for the replacement of existing HVAC units in Henley Middle School's and Journey Middle School's Tech Labs. The existing units in these spaces have reached the end of their useful lifespan. A 10-ton unit at each school will be replaced with two 5-ton units, giving greater flexibility and energy efficiency in terms of heating and cooling within the existing Tech Labs.

#### Project Update

FP&C Staff received the final set of construction documents from the A/E on 12/13. Unfortunately, the A/E's cost estimate was significantly over their contractual not-to-exceed amount. The discrepancy was so great that FP&C and Building Services Staff felt that the project needed to be re-designed. FP&C and Building Services Staff are meeting with the A/E during the week of 1/10 to discuss next steps.

<b>Current Phase:</b>	Design	<b>Budget:</b>	\$240,000.00
<b>% Complete:</b>	25%	<b>PO Balance:</b>	\$18,000.00
<b>Design % Complete:</b>	80%	<b>Paid to Date:</b>	\$11,480.00
<b>Construction % Complete:</b>	0%	<b>Balance:</b>	\$210,520.00
<b>Updated:</b>	1/7/2022		
<b>Managed By:</b>	Matt Wertman		
<b>Substantial Completion:</b>	8/5/2022		



# Capital Projects Report - Facilities and Environmental Services

## Schools

### WAHS Softball Restrooms/ADA

#### Project Scope

This project provides: 1) toilet, concession, and press-box facilities for the girls' softball program and 2) an ADA ramp between the school building and the paved driving range.

#### Project Update

Notice to Proceed (NTP) was issued on 12-08-21. The Pre-Construction Meeting was conducted on 12-14-21. Contractor conducted site surveying during the latter half of December '21 and plans to mobilize in early January '22. The first Owner-Contract-Architect construction meeting is scheduled for 01-11-22. Contractor has been assembling and transmitting submittals which are currently being reviewed by the Owner and A/E.



**Current Phase:** Construction

**% Complete:** 75%

**Design % Complete:** 100%

**Construction % Complete:** 5%

**Updated:** 1/3/2022

**Managed By:** Montie Breeden

**Substantial Completion:** 3/14/2022

**Budget:** \$829,000.00

**PO Balance:** \$753,828.50

**Paid to Date:** \$25,675.66

**Balance:** \$49,495.84

# Capital Projects Report - Facilities and Environmental Services

## Transportation

### Berkmar Bike Ped Improvements

#### Project Scope

This project will support pedestrian and bicyclist safety by constructing an approximately 1.1 mile long Shared-use Path from the Berkmar Drive/Rio Road West intersection to Hilton Heights Road and connect to the Shared-Use Path extending northward from the Berkmar Drive-Hilton Heights Road roundabout. Segment 1 is from Rio Road West to the commercial entrance behind Kroger at Rio Hill. Segment 2 starts at the commercial entrance behind Kroger at Rio Hill and continues to the round-about at Hilton Heights Road.

#### Project Update

Design consultant (AMT) submitted revised Segment 1 - Preliminary 30% Plans and staff reviewed revisions along with Segment 2 plans. AMT will submit to VDOT for review.

<b>Current Phase:</b>	Design	<b>Budget:</b>	\$2,890,026.00
<b>% Complete:</b>	18%	<b>PO Balance:</b>	\$319,827.83
<b>Design % Complete:</b>	36%	<b>Paid to Date:</b>	\$153,490.63
<b>Construction % Complete:</b>	0%	<b>Balance:</b>	\$2,416,707.54
<b>Updated:</b>	1/7/2022		
<b>Managed By:</b>	Mike Stumbaugh		
<b>Substantial Completion:</b>	8/13/2025		

# Capital Projects Report - Facilities and Environmental Services

## Transportation

### Earlysville Road\_Reas Ford Study

#### Project Scope

Over the past 5 years safety concerns have been identified at the Reas Ford Rd/Earlysville Road Intersection in north-central Albemarle County. As a result, VDOT and Albemarle County have been evaluating this intersection for potential improvements that might address these concerns.

Albemarle County is contracting with a transportation engineering consultant to provide the necessary evaluation, analysis and report that would include concepts and estimated cost of options to improve the intersection so that the County can determine what the next steps would be.

#### Project Update

Meeting scheduled for 1/11 with CDD to discuss:

Staff received a preliminary report with recommendations. Four potential solutions were presented as follows:

1. Two turn lanes on Earlysville Road and 1 turn lane on Reas Ford Road
2. Traffic light with turn lanes shown in item 1 above - estimated cost
3. Single lane roundabout - estimated cost
4. Four-way stops with electronic warning signs

FES Staff currently reviewing and will schedule a meeting with CDD Transportation Planning staff to discuss next steps.

<b>Current Phase:</b>	Design	<b>Budget:</b>	\$350,000.00
<b>% Complete:</b>	30%	<b>PO Balance:</b>	\$21,772.80
<b>Design % Complete:</b>	30%	<b>Paid to Date:</b>	\$32,707.20
<b>Construction % Complete:</b>	0%	<b>Balance:</b>	\$295,520.00
<b>Updated:</b>	1/7/2022		
<b>Managed By:</b>	Mike Stumbaugh		
<b>Substantial Completion:</b>	3/1/2022		

# Capital Projects Report - Facilities and Environmental Services

## Transportation

### Eastern Avenue Preliminary Study

#### Project Scope

This project will provide a location study and the design of preliminary plans for approximately 3,000 linear feet of roadway and a bridge crossing over Lickinghole Creek. It will include the evaluation and recommendation of a preferred alignment and bridge crossing, development of the conceptual design for the roadway and bridge, an engineer’s opinion of probable construction cost to support Albemarle County request for funding, as well as environmental and traffic engineering analysis.

#### Project Update

The revenue sharing application has been submitted to VDOT by Community Development. Typical VDOT notification of award would be in April. Applications submitted in odd years for funding are generally available in the last two fiscal years of the Six Year Plan. Calendar Year 2021 applications are anticipated to be funded in Fiscal Years 2027 and 2028.

Geotechnical survey work has commenced for the routing of Eastern Avenue over Lickinghole Creek.

<b>Current Phase:</b>	Design	<b>Budget:</b>	\$275,000.00
<b>% Complete:</b>	100%	<b>PO Balance:</b>	\$0.00
<b>Design % Complete:</b>	100%	<b>Paid to Date:</b>	\$269,488.70
<b>Construction % Complete:</b>	0%	<b>Balance:</b>	\$5,511.30
<b>Updated:</b>	1/7/2022		
<b>Managed By:</b>	Mike Stumbaugh		
<b>Substantial Completion:</b>			

# Capital Projects Report - Facilities and Environmental Services

## Transportation

### Old Lynchburg Sidewalk Improvements

#### Project Scope

The initial focus of this project is to perform preliminary design of a safe pedestrian connection along Old Lynchburg Road, connecting the sidewalk networks of the City of Charlottesville and County of Albemarle. The design includes new sidewalk beneath the Interstate 64 overpass.

#### Project Update

Line + Grade Civil Engineers has been tasked to provide a 30% design for pedestrian improvements, and construction cost estimates broken out to indicate the costs associated with work performed in the County, in the City and for the crossing of the Moore's Creek. A kick-off meeting is scheduled for 1/18/22, inclusive of City of Charlottesville and VDOT representatives.



<b>Current Phase:</b>	Design	<b>Budget:</b>	\$75,000.00
<b>% Complete:</b>	0%	<b>PO Balance:</b>	\$62,560.00
<b>Design % Complete:</b>	0%	<b>Paid to Date:</b>	\$0.00
<b>Construction % Complete:</b>	0%	<b>Balance:</b>	\$12,440.00
<b>Updated:</b>	1/7/2022		
<b>Managed By:</b>	Mike Stumbaugh		
<b>Substantial Completion:</b>	6/3/2022		

Capital Projects Report - Facilities and Environmental Services

Transportation

Sidewalk - Commonwealth/Dominion

Project Scope

Design and construct approximately 6,450 feet of sidewalk on Commonwealth Drive from Hydraulic Road to Peyton Drive (east side); Commonwealth Drive from Commonwealth Circle to Dominion Drive (both sides); and along Dominion Drive from Commonwealth Drive to US 29 (both sides). Funded through the Revenue Sharing and Transportation Alternatives Programs grant applications administered by Virginia Department of Transportation (VDOT). Initial planning including VDOT related submissions represent a large portion of the up-front work. There are approximately 100 easements or temporary easements required for this project.



Project Update

Staff have provided a project update to Board of Supervisors members in whose jurisdiction this project falls. The update focused on the impacts of project design alternatives on residents in this neighborhood. Based on feedback received, an update to the full Board is intended late winter or early spring.

Current Phase:	Design	Budget:	\$3,336,224.00
% Complete:	25%	PO Balance:	\$338,741.28
Design % Complete:	32%	Paid to Date:	\$161,897.88
Construction % Complete:	0%	Balance:	\$2,835,584.84
Updated:	1/7/2022		
Managed By:	Blake Abplanalp		
Substantial Completion:	2/10/2025		



# Capital Projects Report - Facilities and Environmental Services

## Transportation

### Sidewalk - Ivy Road

#### Project Scope

This VDOT Revenue Sharing project supports pedestrian safety by providing sidewalk along Ivy Road from the existing sidewalk at the Charlottesville City limits to Stillfried Lane with a potential future extension along the University of Virginia property to the Route 29/250 Bypass interchange. The project includes crosswalks and pedestrian signals at the Old Ivy Road (railroad underpass) and Ivy Road intersection; bike lane facilities, curb & gutter, storm drainage system improvements; and consideration for possible street trees and pedestrian lighting. Complicated right-of-way acquisitions are a challenge on this project.



#### Project Update

The sidewalk is complete from Saint Anne's to Colonnade Drive and the waterline is currently being installed in front of the Teague Funeral Home. Storm drain installation will begin after the waterline installation is complete.

<b>Current Phase:</b>	Construction	<b>Budget:</b>	\$3,078,000.00
<b>% Complete:</b>	40%	<b>PO Balance:</b>	\$1,737,782.97
<b>Design % Complete:</b>	100%	<b>Paid to Date:</b>	\$1,122,405.80
<b>Construction % Complete:</b>	40%	<b>Balance:</b>	\$217,811.23
<b>Updated:</b>	1/7/2022		
<b>Managed By:</b>	Walter Harris		
<b>Substantial Completion:</b>	8/30/2022		

Capital Projects Report - Facilities and Environmental Services

Transportation

Sidewalk - Library Avenue

Project Scope

This project will extend Library Avenue westward through the Barnes Lumber property to connect to High Street and then to Hilltop Street in Parkside Village as well as a connection to The Square. This is being proposed as a public private partnership with the developer of the Barnes Lumber property.

Project Update

Estimate reconciliation exercise took place. Revised estimate received on 1-4-22. CXO will be meeting with Dominion, Comcast relocation price received and staff has enlisted help of a Lumen Director to expedite Century Link pricing. Goal is to bid this project and NIFI - Square together for potential significant savings.

Current Phase:	Design	Budget:	\$0.00
% Complete:	57%	PO Balance:	\$0.00
Design % Complete:	83%	Paid to Date:	\$0.00
Construction % Complete:	0%	Balance:	\$0.00
Updated:	1/7/2022		
Managed By:	Blake Abplanalp		
Substantial Completion:	9/14/2023		

# Capital Projects Report - Facilities and Environmental Services

## Transportation

### Sidewalk - Rio Road, Avon Street & Rt. 250 West-Crozet

#### Project Scope

VDOT Revenue Sharing project supports pedestrian safety by providing sidewalk improvements along Rio Road, Avon Street, and US 250 West (Rockfish Gap Turnpike). The Rio Road Sidewalk Improvement project will connect the Stonehenge residential neighborhood to the John Warner Parkway and Rio Road sidewalk system. The Avon Street Walkway/Crosswalks Improvement project will provide sidewalks on the east side from Swan Lake Drive to Mill Creek Drive and then to Cale Elementary School and on the west side from Stoney Creek Drive to Arden Drive. The US 250 West-Crozet project will consist of the construction of sidewalk and crosswalks from Cory Farms to the Cloverlawn commercial area and Blue Ridge Shopping Center.



#### Project Update

Sidewalk installation on the northwest side of Rio Road has mostly been completed. One exception to this is the short segment between Dunlora Drive and the John Warner Parkway, which will be completed by a different contractor in the spring. The fiber line and gas line relocations are complete on the southeast side of Rio Road. The Contractor is beginning to install storm pipe in this segment. Once completed, the contractor will begin underdrain installations, followed by grading and concrete work. Work on Rockfish Gap Turnpike and Avon Street are both delayed due to supply chain delays in obtaining concrete storm pipe. The tentative start date for these two legs of the project is March 2022.

<b>Current Phase:</b>	Construction	<b>Budget:</b>	\$5,005,208.72
<b>% Complete:</b>	93%	<b>PO Balance:</b>	\$3,601,024.00
<b>Design % Complete:</b>	100%	<b>Paid to Date:</b>	\$1,053,883.93
<b>Construction % Complete:</b>	30%	<b>Balance:</b>	\$350,300.74
<b>Updated:</b>	1/7/2022		
<b>Managed By:</b>	Matt Wertman		
<b>Substantial Completion:</b>	6/2/2022		

Capital Projects Report - Facilities and Environmental Services

Water Resources

Woodbrook Lagoon Maintenance and Repairs

Project Scope

Monitoring of lagoon via the use of stream gauges, barometer and rain gauge, for several months, to inform the design for corrective measures to address: 1) berm failure, 2) wetland inflow, 3) stream bypass, 4) access road, and 5) outfall. Upon completion of design scope of work the County will contract, via task order, with one of its hourly site contractors to implement the corrections.

Project Update

Proejct Charter and A/E Scope of Work have been completed. A/E fee negotiations are currently underway with a design contract anticipated by late-January '22.



Current Phase:	Initiation
% Complete:	2%
Design % Complete:	0%
Construction % Complete:	0%
Updated:	1/3/2022
Managed By:	Montie Breeden
Substantial Completion:	

Budget:	\$160,000.00
PO Balance:	\$0.00
Paid to Date:	\$0.00
Balance:	\$160,000.00