

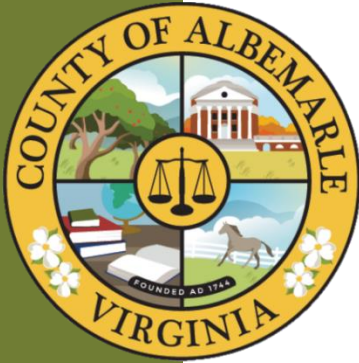
Easement - County Owned Parcel TMP 91-10

Public Hearing

Bill Strother

Chief of Facilities and Operations

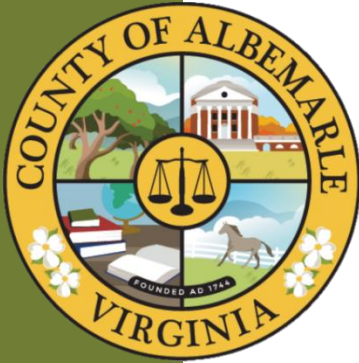
bstrother@albemarle.org



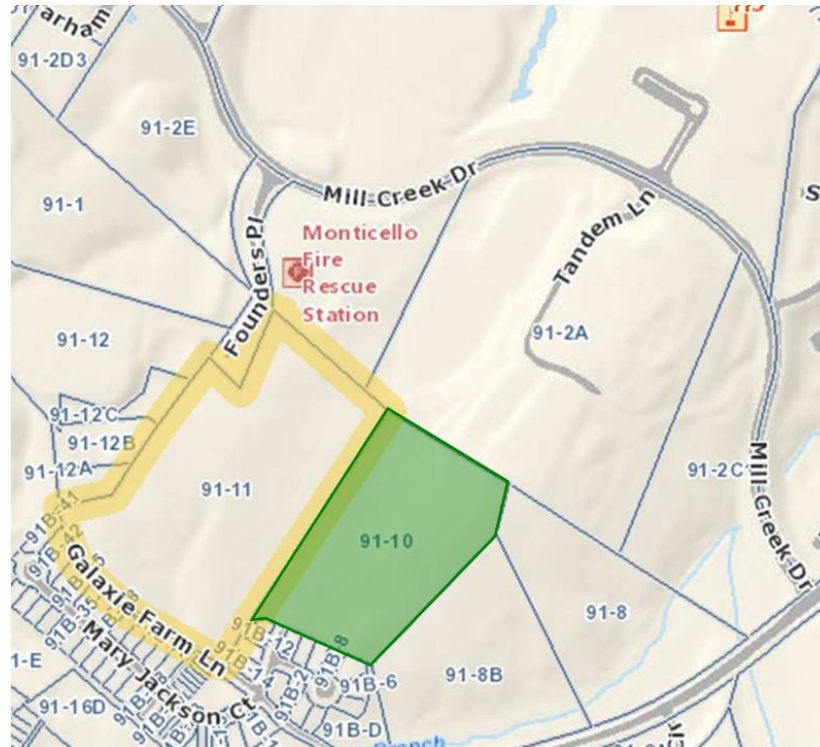
Introduction

Albemarle County Public Schools is preparing to construct Mountain View Upper Elementary School on the land parcel behind Fire & Rescue Station 11 along Mill Creek Drive.

In order to supply water from multiple sources, Albemarle County Service Authority (ASCA) requests an easement across an adjacent County owned property.



Parcel Locations

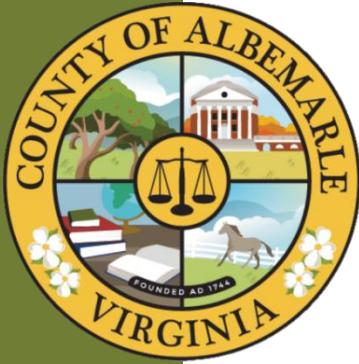


Parcel 09100-00-00-01100 (91-11)

- Albemarle School Board Owned
- Future home of Mountain View Upper Elementary School

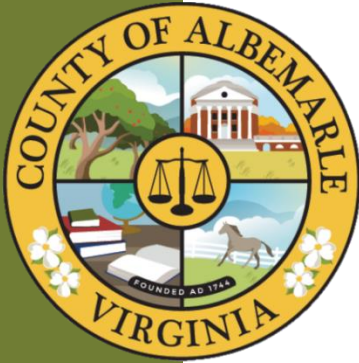
Parcel 09100-00-00-01000 (91-10)

- County Owned
- Undeveloped property



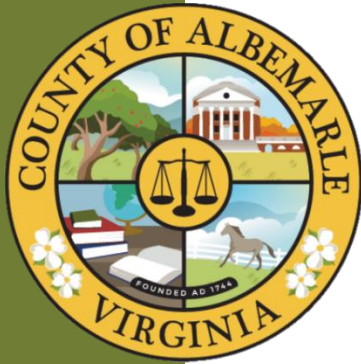
An easement is necessary to support the construction and future operations of Mountain View Upper Elementary School.



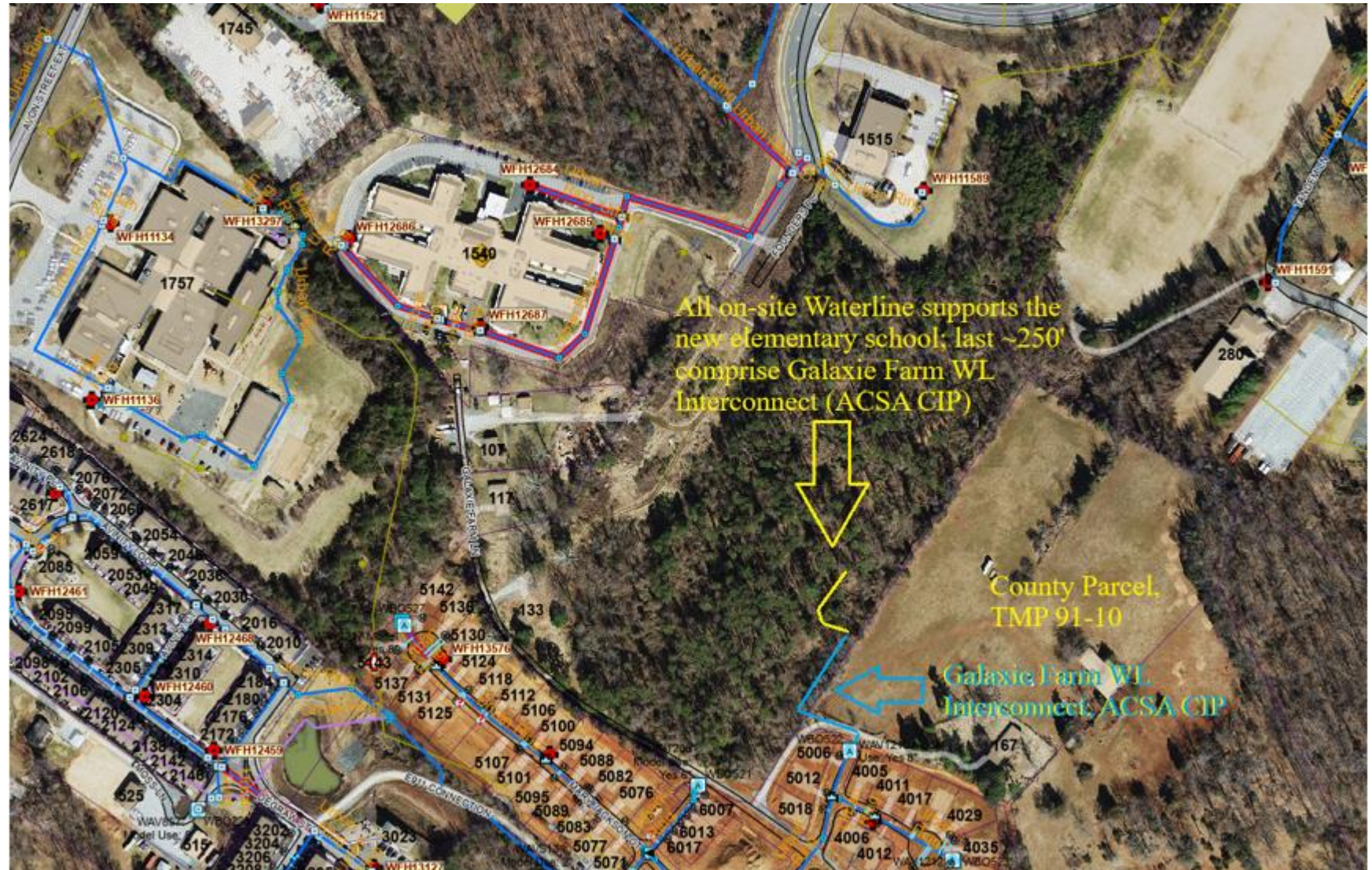


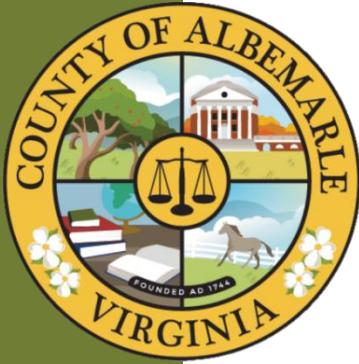
Purpose

- ACSA has requested a water easement across Albemarle County parcel 09100-00-00-01000
- This easement is necessary for installation and maintenance of a secondary water line to feed the new Elementary School from existing Albemarle County Service Authority Infrastructure located on Galaxie Farm Subdivision

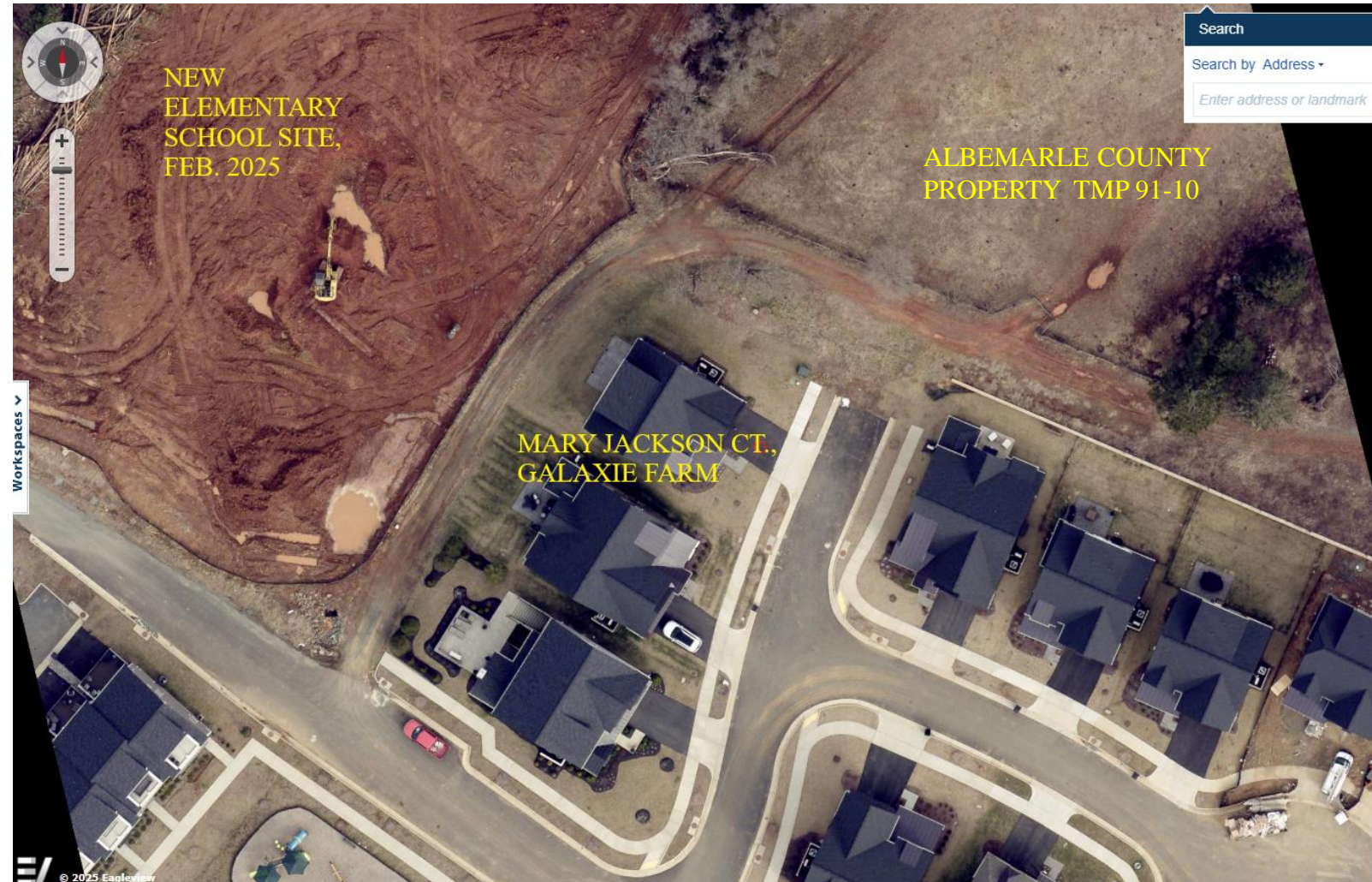


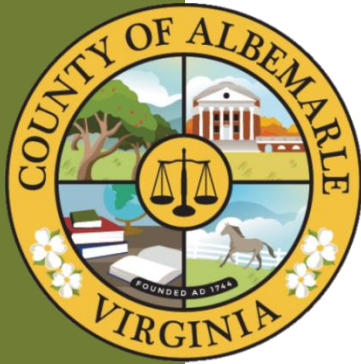
Water Easement - Overview



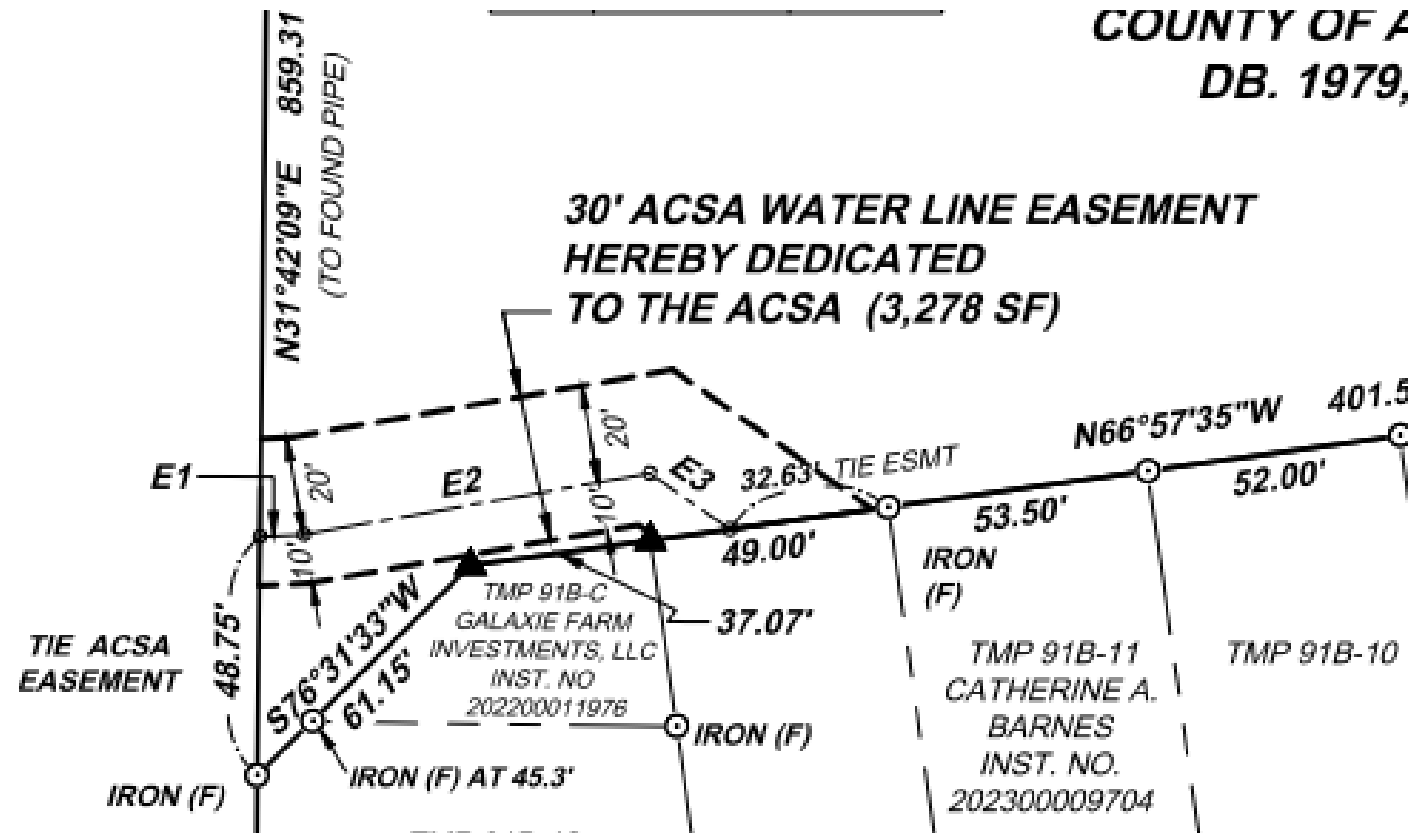


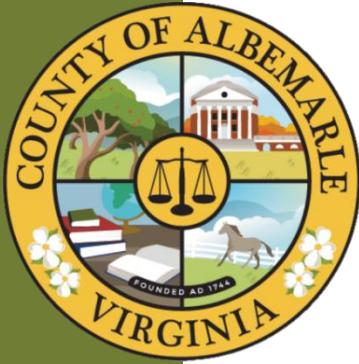
Water Easement - Overview





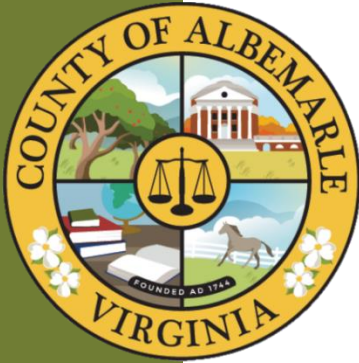
Water Easement - Detail





Summary

- Requests directly support the construction and future operations of Albemarle County Public School Mountain View Upper Elementary.
- County Local Government stake holders have reviewed and approved.



Recommendation

Staff recommends that the Board adopt the attached Resolution (Attachment D) approving the easements and authorize the County Executive to execute a deed and any other necessary or related documents to convey these interests.