

The Board of County Supervisors of Albemarle County, Virginia, in regular meeting on the 17<sup>th</sup> day of April 2024, adopted the following resolution:

## RESOLUTION

WHEREAS, the street(s) in **Fairhill Subdivision**, as described on the attached Additions Form AM-4.3 dated **April 17<sup>th</sup>, 2024**, fully incorporated herein by reference, is shown on plats recorded in the Clerk's Office of the Circuit Court of Albemarle County, Virginia; and

WHEREAS, the Resident Engineer for the Virginia Department of Transportation has advised the Board that the street(s) meet the requirements established by the Subdivision Street Requirements of the Virginia Department of Transportation.

NOW, THEREFORE, BE IT RESOLVED, that the Albemarle Board of County Supervisors requests the Virginia Department of Transportation to add the street(s) in **Fairhill Subdivision**, as described on the attached Additions Form AM-4.3 dated **April 17<sup>th</sup>, 2024**, to the secondary system of state highways, pursuant to §33.2-705, Code of Virginia, and the Department's Subdivision Street Requirements; and

BE IT FURTHER RESOLVED that the Board guarantees a clear and unrestricted right- of-way, as described, exclusive of any necessary easements for cuts, fills and drainage as described on the recorded plats; and

FURTHER RESOLVED that a certified copy of this resolution be forwarded to the Resident Engineer for the Virginia Department of Transportation.

\* \* \* \* \*

Recorded vote:

Moved by:

Seconded by:

Yeas:

Nays:

Absent:

A Copy Teste:

---

Claudette K. Borgersen, Clerk  
Board of County Supervisors



COMMONWEALTH OF VIRGINIA DEPARTMENT OF TRANSPORTATION  
Form AM 4.3

In Albemarle County

by Resolution of the governing body adopted 4/17/2024

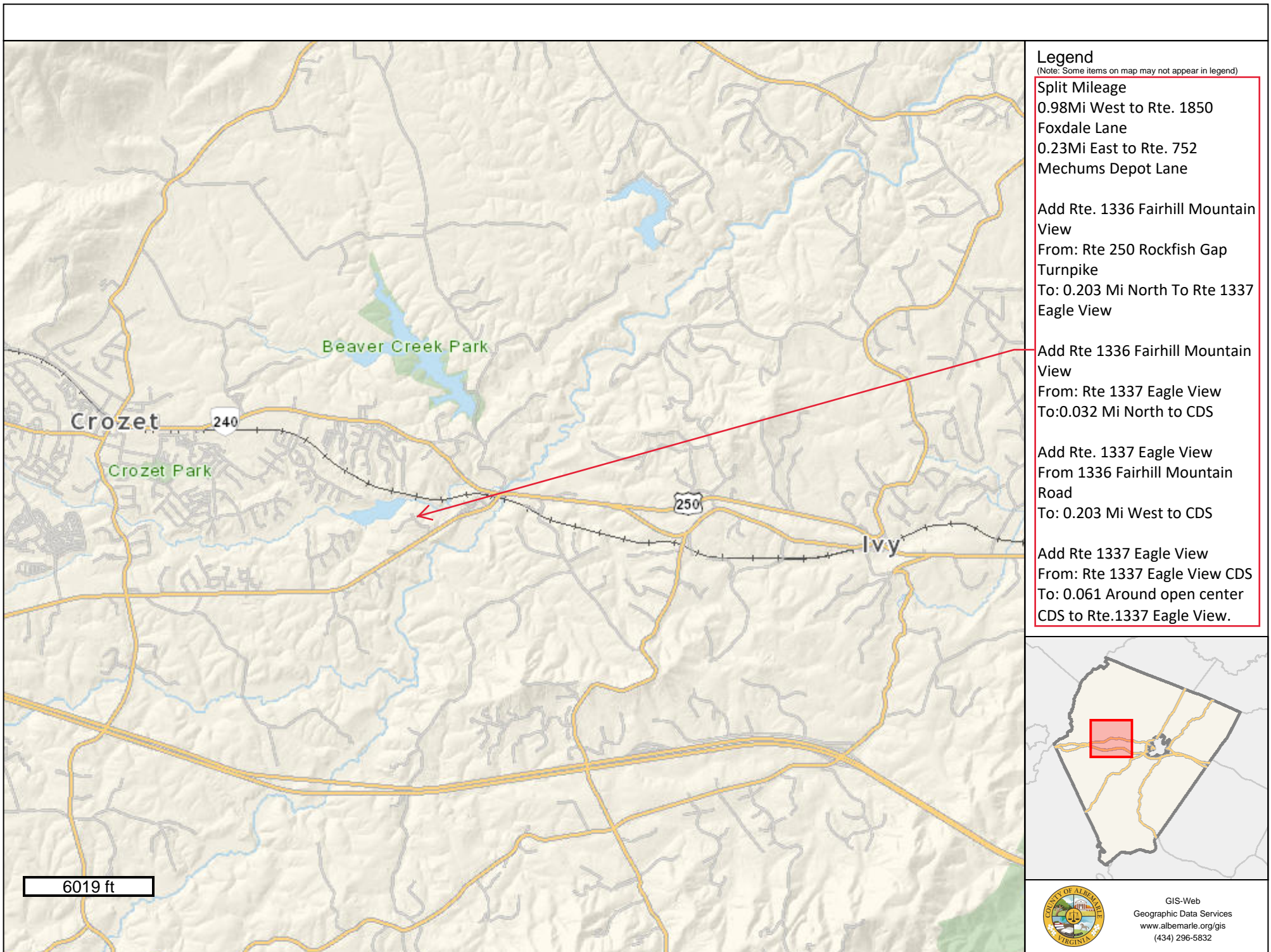
The following VDOT Form AM-4.3 is hereby attached and incorporated as part of the governing body's resolution for changes to the secondary system of state highways.

A Copy Testee      Signed (County Official):\_\_\_\_\_

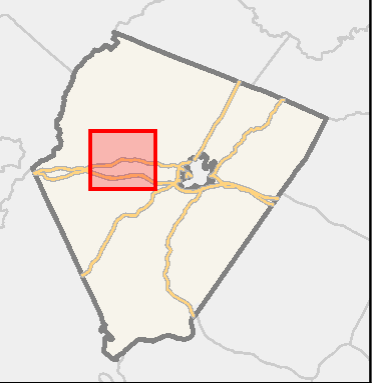
Report of Changes in the Secondary System of State Highways

Project/Subdivision: Fairhill

CHANGE TYPE	RTE NUM & STREET NAME	CHANGE DESCRIPTION	FROM TERMINI	TO TERMINI	LENGTH	NUMBER OF LANES	RECORDATION REFERENCE	ROW WIDTH
Addition	Rt. 1336 - Fairhill Mountain View	New subdivision street §33.2-705	Int Rte 250 Rockfish Gap Turnpike	0.203Mi North to 1337 Eagle View	0.2030	2	5188/625	50
Addition	Rt. 1336 - Fairhill Mountain View	New subdivision street §33.2-705	Rte 1337 Eagle View	0.032Mi North to CDS	0.0320	2	5188/625	50
Addition	Rt. 1337 - Eagle View	New subdivision street §33.2-705	Rte 1337 Eagle View Begin CDS	0.061mi around open center CDS	0.0610		5188/625	128
Addition	Rt. 1337 - Eagle View	New subdivision street §33.2-705	Rte 1336 Fairhill Mountain View	0.203Mi West to CDS	0.2030	2	5188/625	50



- Legend**  
(Note: Some items on map may not appear in legend)
- Split Mileage**  
0.98Mi West to Rte. 1850  
Foxdale Lane  
0.23Mi East to Rte. 752  
Mechums Depot Lane
- Add Rte. 1336 Fairhill Mountain View  
From: Rte 250 Rockfish Gap Turnpike  
To: 0.203 Mi North To Rte 1337 Eagle View
- Add Rte 1336 Fairhill Mountain View  
From: Rte 1337 Eagle View  
To:0.032 Mi North to CDS
- Add Rte. 1337 Eagle View  
From 1336 Fairhill Mountain Road  
To: 0.203 Mi West to CDS
- Add Rte 1337 Eagle View  
From: Rte 1337 Eagle View CDS  
To: 0.061 Around open center CDS to Rte.1337 Eagle View.



GIS-Web  
Geographic Data Services  
[www.albemarle.org/gis](http://www.albemarle.org/gis)  
(434) 296-5832