

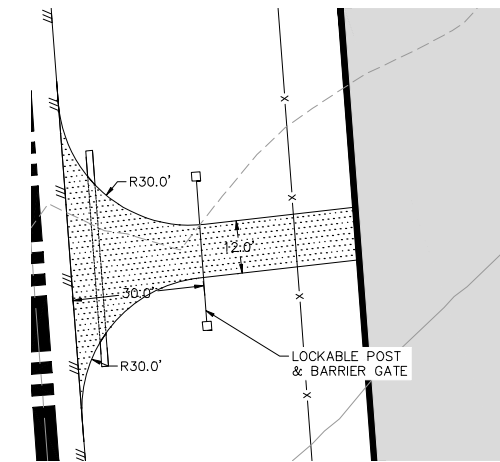
VIEW FROM ARROW #1

VIEW FROM ARROW #2

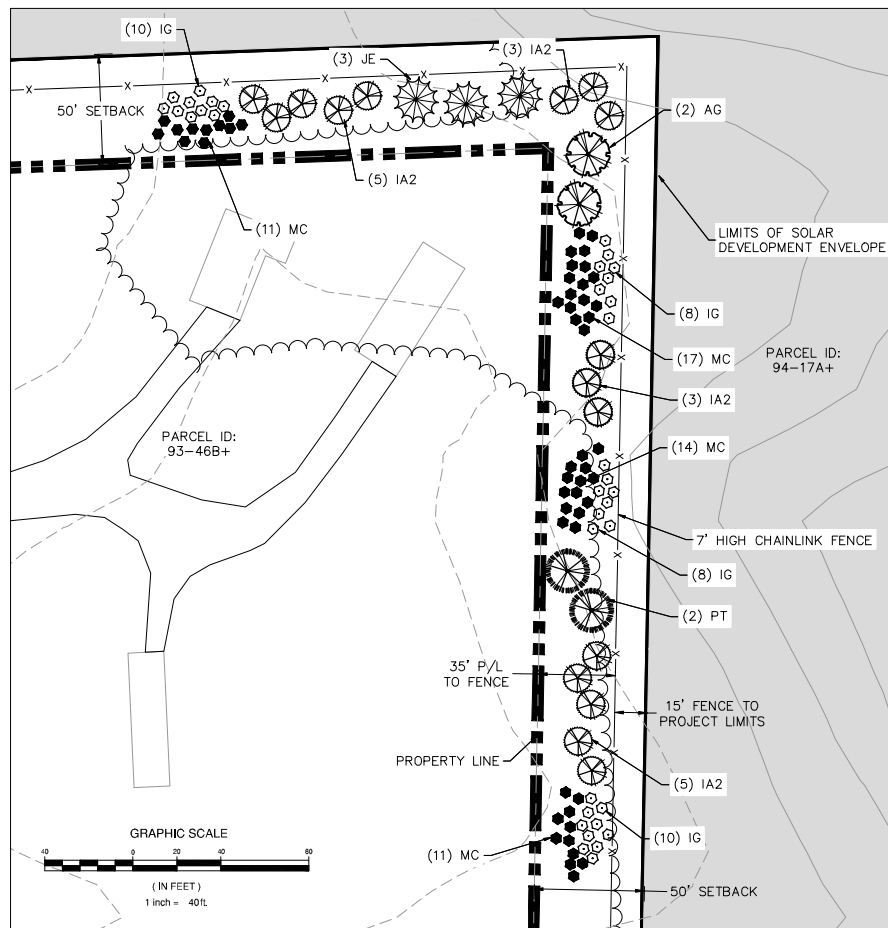
VIEW FROM ARROW #3

NOTE:

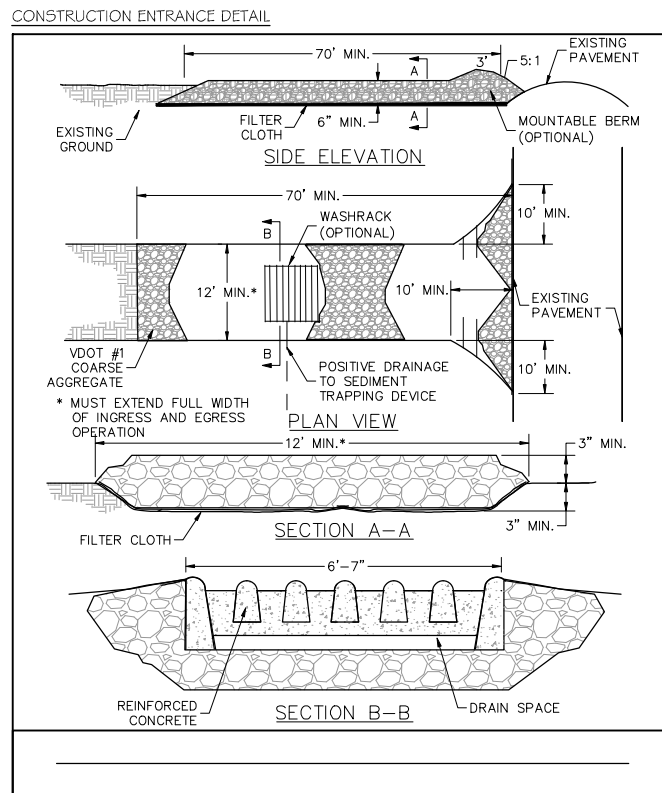
1. THE PLANTING SCHEDULE IS PRELIMINARY AND IS SUBJECT TO CHANGE WITH COUNTY APPROVAL, BASED ON SOIL TYPE, TOPOGRAPHY, AND GEOLOGY.
2. ALL SITE PLANTINGS OF TREES AND SHRUBS SHALL BE ALLOWED TO REACH, AND BE MAINTAINED AT, MATURE HEIGHT; THE TOPPING OF TREES IS PROHIBITED. SHRUBS AND TREES SHALL BE PRUNED MINIMALLY AND ONLY TO SUPPORT THE OVERALL HEALTH OF THE PLANT.
3. A MINIMUM OF 30 TREES OF 7' HEIGHT OR TALLER SHALL BE PLANTED ALONG THOMAS JEFFERSON HIGHWAY (RT 53).

[illegible]

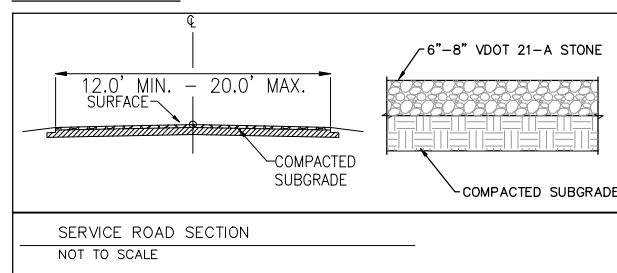
PERMANENT ENTRANCE PLAN VIEW



ADJACENT PROPERTY LANDSCAPE BUFFER DETAIL

$$\overline{1'' = 40'}$$


### SERVICE ROAD DETAIL



SERVICE ROAD SECTION  
NOT TO SCALE

TO SCALE

REVISIONS	
NOVEMBER 7, 2017	COUNTY COMMENTS
JANUARY 5, 2018	COUNTY COMMENTS

DESIGNED BY:	SWM
DRAWN BY:	SWM
CHECKED BY:	GHT
SCALE:	
DATE:	AUGUST 21, 2017
PROJECT NUMBER:	16020168-050303