

ZMA 2025-00012

PARHAM CIRCLE STORAGE

COUNTY OF ALBEMARLE, VA

09/23/2025

NOTES:

CURRENT OWNER: CREEKMILL, LLC

TAX MAP PARCEL: 07600-00-00-054A1

TOTAL PROJECT AREA: 1.73 AC.

EXISTING ZONING: PLANNED DEVELOPMENT - SHOPPING CENTER PER ZMA199500021

ENTRANCE CORRIDOR OVERLAY DISTRICT
STEEP SLOPES OVERLAY DISTRICT
AIRPORT IMPACT AREA

PROPOSED ZONING: AMENDMENT TO EXISTING ZONING

COMPREHENSIVE PLAN: NEIGHBORHOOD 4 - COMMUNITY MIXED USE

MAGISTERIAL DISTRICT: SCOTTSVILLE DISTRICT

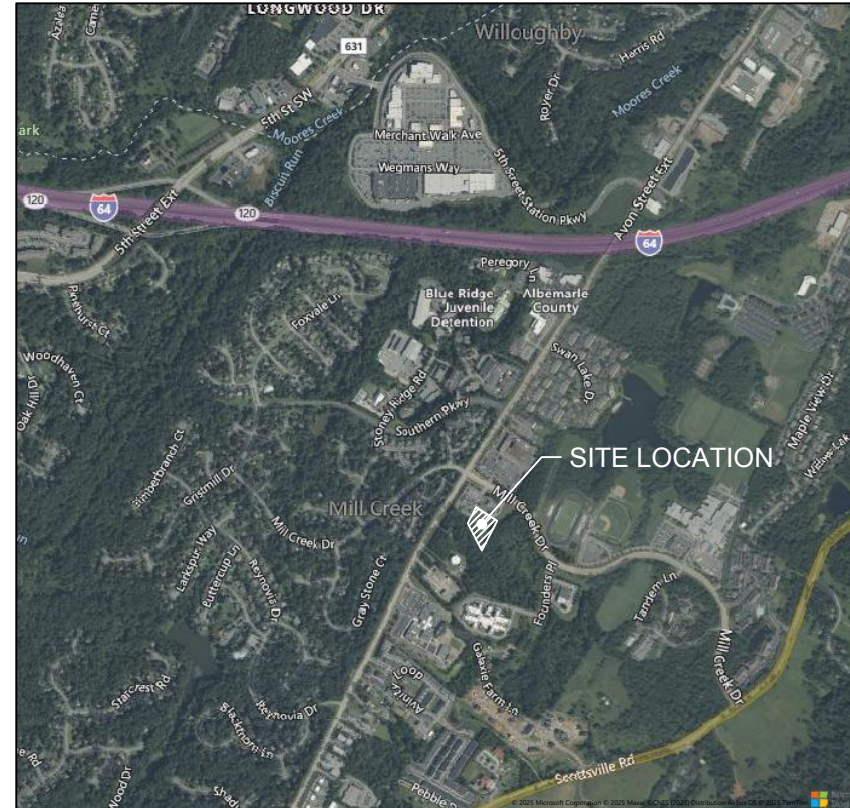
TOPOGRAPHY: TOPOGRAPHY INFORMATION COMPILED FROM LIDAR IMAGERY ON SEPTEMBER 9TH, 2025.

DATUM: NAD 83

UTILITIES: ALBEMARLE COUNTY SERVICE AUTHORITY

WATERSHED: RIVANNA RIVER - MOORE'S CREEK

FLOODPLAIN: THIS PROPERTY LIES WITHIN A FEMA ZONE "X" (AREAS DETERMINED TO BE OUTSIDE THE 0.2% ANNUAL CHANCE FLOOD PLAIN) AS SHOWN ON THE FLOOD INSURANCE RATE MAP COMMUNITY PANEL #51003C0426D, DATED FEBRUARY 4, 2005.



VICINITY MAP
1"=2000'

DEVELOPER:
LIVE OAK CAPITAL PARTNERS
430 PLASTERS AVENUE NE, SUITE 200
ATLANTA, GA 30324
CONTACT: STEVE TEDDER
STEDDER@LIVEOAKCP.COM

ENGINEER OF RECORD:
TIMMONS GROUP
608 PRESTON AVE. SUITE 200
CHARLOTTESVILLE, VA 22903
CONTACT: CLINT SHIFFLETT, P.E.
CLINT.SHIFFLETT@TIMMONS.COM
TELEPHONE: (434) 327-1690

Sheet List Table

Sheet Number	Sheet Title
1	COVER SHEET
2	EXISTING ACCESS EASEMENT PLAT
3	EXISTING EASEMENT PLAT
4	EXISTING CONDITIONS PLAN
5	APPLICATION PLAN
6	LAYOUT & UTILITY PLAN
7	GRADING AND STORMWATER MANAGEMENT PLAN
8	SITE CROSS SECTIONS
9	SITE CROSS SECTIONS

TOTAL SHEETS = 9

S:\10374398-Parham_Circle_Storage\DWG\Sheet\Rezoning Application Plan\74398C-COVER.dwg | Plotted on 2/11/2026 4:14 PM | by Kevin Flynn

THIS DRAWING PREPARED AT THE
CHARLOTTESVILLE OFFICE
608 Preston Avenue, Suite 200 | Charlottesville, VA 22903
TEL 434.295.5624 FAX 434.295.8317 www.timmons.com

YOUR VISION ACHIEVED THROUGH OURS.

DATE	REVISION DESCRIPTION
12/19/2025	REVISED PER COUNTY COMMENTS
2/11/2026	REVISED PER COUNTY COMMENTS

TIMMONS GROUP

PARHAM CIRCLE STORAGE
ALBEMARLE COUNTY, VIRGINIA
COVER SHEET

JOB NO.
74398

SHEET NO.
1

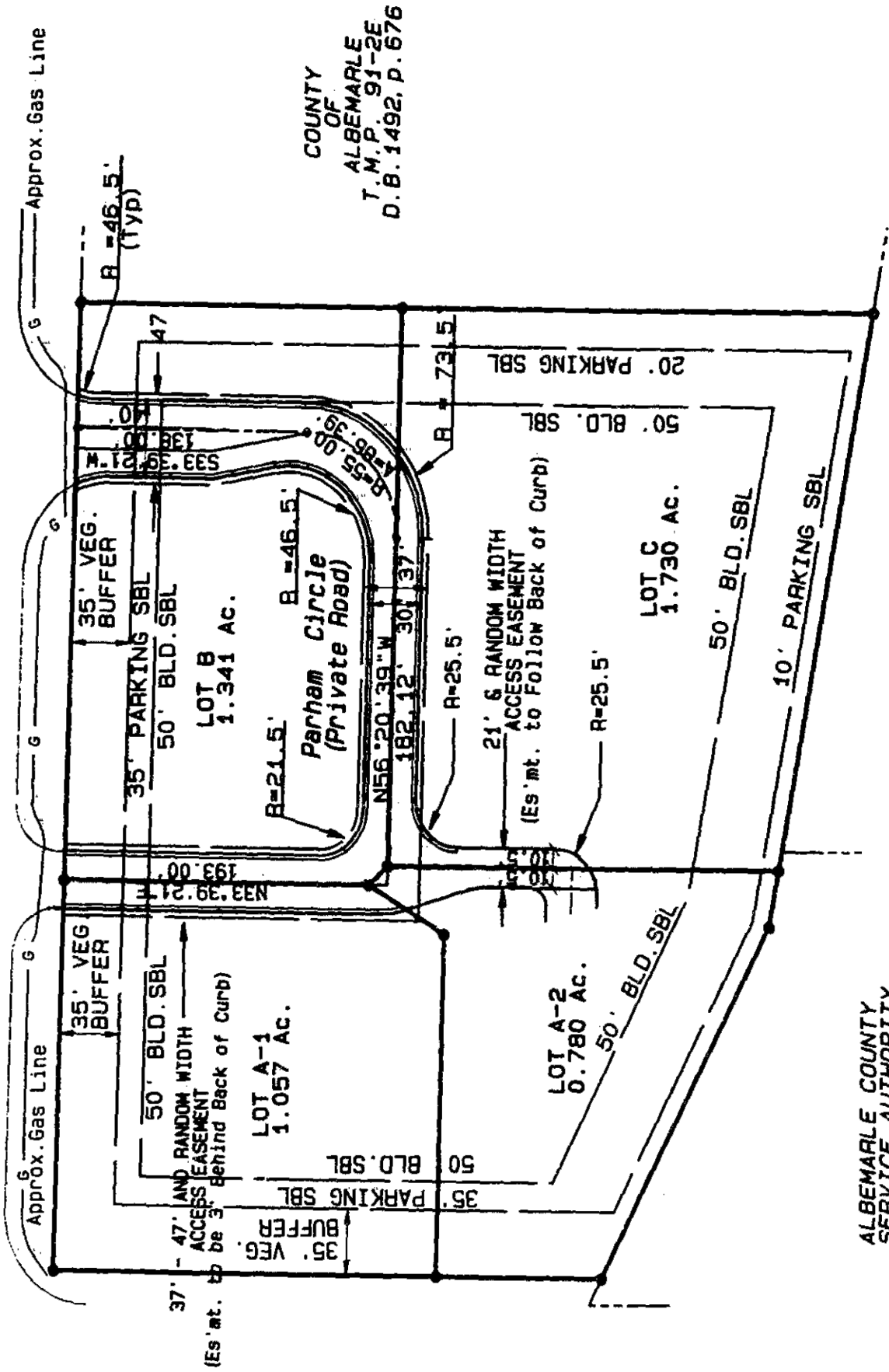
These plans and associated documents are the exclusive property of TIMMONS GROUP and may not be reproduced in whole or in part and shall not be used for any purpose whatsoever, inclusive, but not limited to construction, bidding, and/or construction staking without the express written consent of TIMMONS GROUP.

8K1895PG0170

HILLCREST LLC
T.M.P. 77-47

AVON STREET EXT. (STE. RTE. 742)
(RANDOM WIDTH R.O.W.)

MILL CREEK DRIVE
(120' R.O.W.)



COUNTY OF ALBEMARLE
T.M.P. 91-2E
D.B. 1492, P. 676

ALBEMARLE COUNTY SERVICE AUTHORITY
T.M.P. 91-1A
D.B. 1089, P. 670

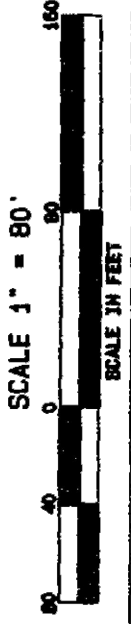
ALBEMARLE COUNTY SERVICE AUTHORITY
T.M.P. 91-1
D.B. 919, P. 746



PLAT SHOWING ACCESS EASEMENT
CREEKMILL SUBDIVISION

A DIVISION OF
PARCEL 2D, TAX MAP 91
SCOTTSVILLE DISTRICT
ALBEMARLE COUNTY, VIRGINIA
DECEMBER 21, 1999

Elm 2/18/00
ROUDABUSH, GALE & ASSOC., INC.
A PROFESSIONAL CORPORATION
SURVEYORS, PLANNERS, & ENGINEERS
914 MONTICELLO ROAD
CHARLOTTESVILLE, VIRGINIA



SHEET 3 OF 4

DC/TMODWIN/7835PLAT.PRO

7835

TIMMONS GROUP

PARHAM CIRCLE STORAGE
ALBEMARLE COUNTY, VIRGINIA
EXISTING ACCESS EASEMENT PLAT

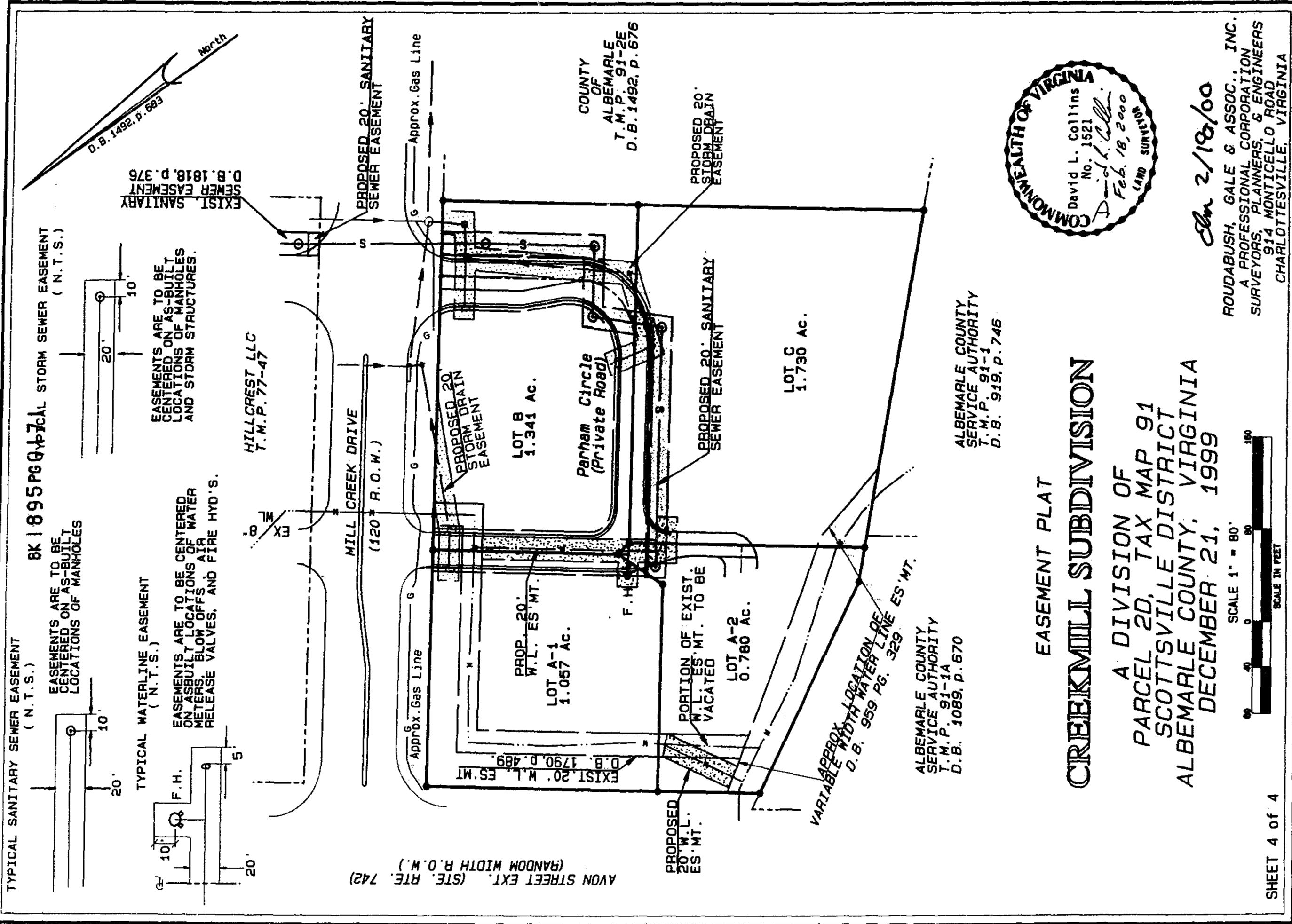
JOB NO.
74398
SHEET NO.
2

YOUR VISION ACHIEVED THROUGH OURS.

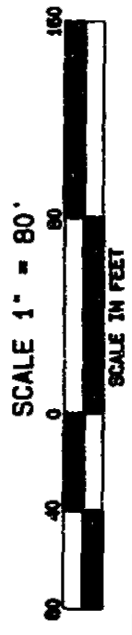
DATE	REVISION DESCRIPTION
9/23/2025 <td></td>	
12/19/2025	REVISED PER COUNTY COMMENTS
2/11/2026	REVISED PER COUNTY COMMENTS

THIS DRAWING PREPARED AT THE
CHARLOTTESVILLE OFFICE
608 Preston Avenue, Suite 200 | Charlottesville, VA 22903
TEL 434.295.5624 FAX 434.295.8317 www.timmons.com

These plans and associated documents are the exclusive property of TIMMONS GROUP and may not be reproduced in whole or in part and shall not be used for any purpose whatsoever, inclusive, but not limited to construction, bidding, and/or construction taking without the express written consent of TIMMONS GROUP.



SHEET 4 of 4



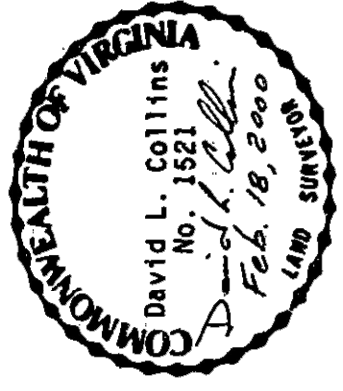
EASEMENT PLAT

CREEKMILL SUBDIVISION

A DIVISION OF
PARCEL 2D, TAX MAP 91
SCOTTSVILLE DISTRICT
ALBEMARLE COUNTY, VIRGINIA
DECEMBER 21, 1999

ALBEMARLE COUNTY
 SERVICE AUTHORITY
 T.M.P. 91-1A
 D.B. 1089, p. 670

ALBEMARLE COUNTY
 SERVICE AUTHORITY
 T.M.P. 91-1
 D.B. 919, p. 746

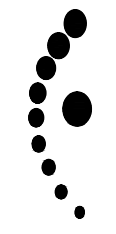


Jan 2/18/00

ROUDABUSH, GALE & ASSOC., INC.
 A PROFESSIONAL CORPORATION
 SURVEYORS, PLANNERS, & ENGINEERS
 914 MONTICELLO ROAD
 CHARLOTTEVILLE, VIRGINIA

THIS DRAWING PREPARED AT THE
CHARLOTTEVILLE OFFICE
 608 Preston Avenue, Suite 200 | Charlottesville, VA 22903
 TEL 434.295.5624 FAX 434.295.8317 www.timmons.com

YOUR VISION ACHIEVED THROUGH OURS.



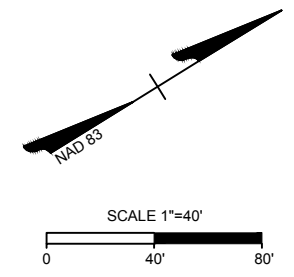
PARHAM CIRCLE STORAGE
 ALBEMARLE COUNTY, VIRGINIA
 EXISTING EASEMENT PLAT

JOB NO.	74398
SHEET NO.	3

DATE	REVISION DESCRIPTION
12/19/2025	REVISED PER COUNTY COMMENTS
2/11/2026	REVISED PER COUNTY COMMENTS

These plans and associated documents are the exclusive property of TIMMONS GROUP and may not be reproduced in whole or in part and shall not be used for any purpose whatsoever, inclusive, but not limited to construction, bidding, and/or construction taking without the express written consent of TIMMONS GROUP.

S:\10374398-Parham_Circle_Storage\DWG\Sheet\Re zoning Application Plan\74398C-EXIST.dwg | Plotted on 2/11/2026 4:15 PM | by Kevin Flynn



TIMMONS GROUP

PARHAM CIRCLE STORAGE

ALBEMARLE COUNTY, VIRGINIA

EXISTING CONDITIONS PLAN

JOB NO. 74398

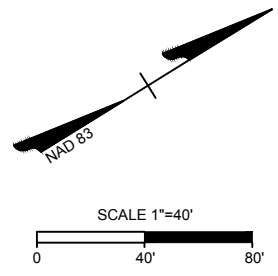
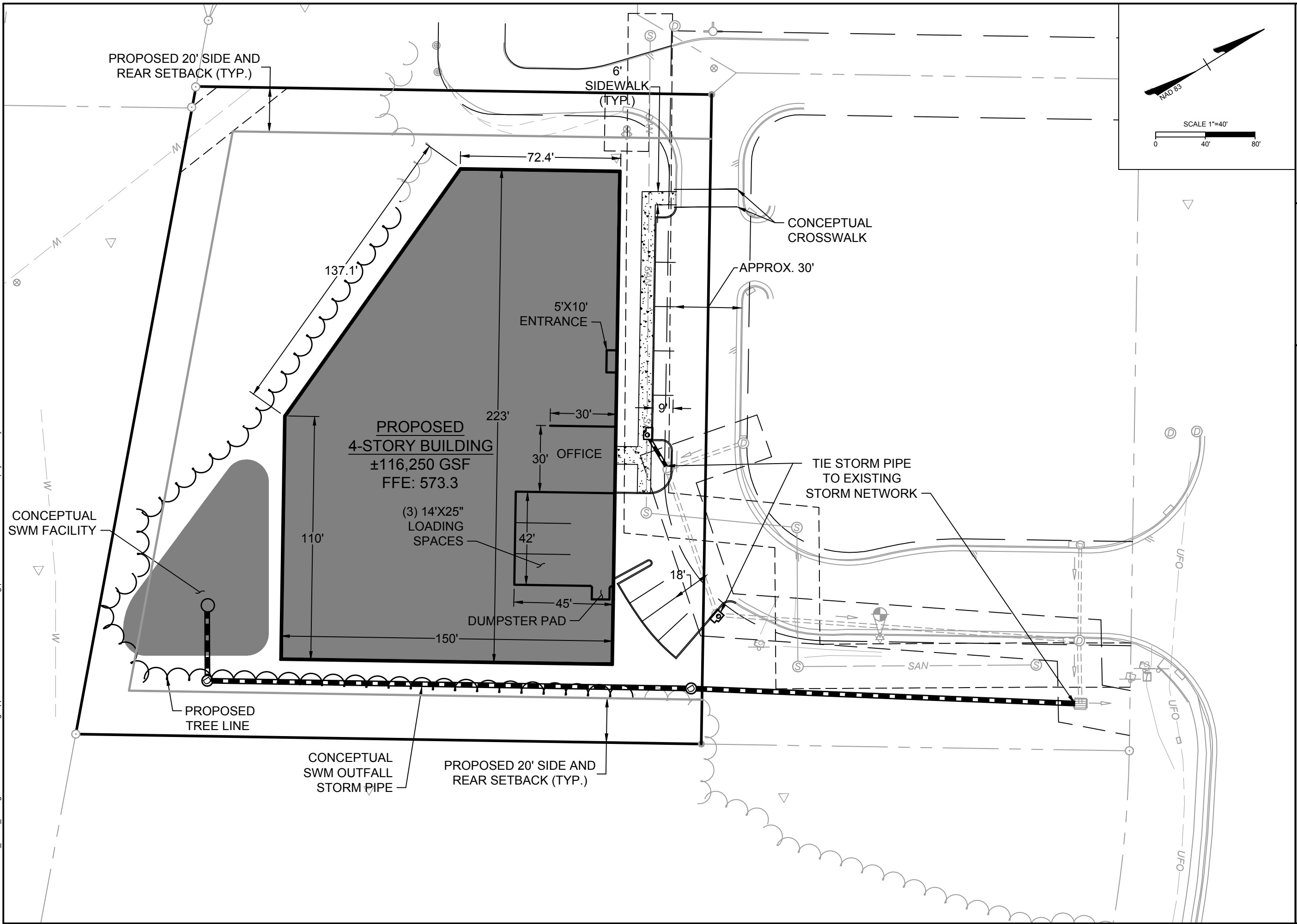
SHEET NO. 4

YOUR VISION ACHIEVED THROUGH OURS.	REVISION DESCRIPTION
DATE	DATE
12/19/2025	9/23/2025
2/11/2026	REVISED PER COUNTY COMMENTS
REVISED PER COUNTY COMMENTS	REVISED PER COUNTY COMMENTS

THIS DRAWING PREPARED AT THE CHARLOTTEVILLE OFFICE
 608 Preston Avenue, Suite 200 | Charlottesville, VA 22903
 TEL 434.295.5624 FAX 434.295.8317 www.timmons.com

MILL CREEK DRIVE
 120' PUBLIC RIGHT OF WAY
 DB. 1492, PG. 678 | DB. 1817, PG. 48

S:\10374398-Parham_Circle_Storage\DWG\Sheet\Rezonimg Application Plan\74398C-LAYO.dwg | Plotted on 2/11/2026 4:15 PM | by Kevin Flynn



THIS DRAWING PREPARED AT THE
CHARLOTTEVILLE OFFICE
 608 Preston Avenue, Suite 200 | Charlottesville, VA 22903
 TEL 434.295.5624 FAX 434.295.8317 www.timmons.com

YOUR VISION ACHIEVED THROUGH OURS.

DATE	REVISION DESCRIPTION
12/19/2025	REVISED PER COUNTY COMMENTS
2/11/2026	REVISED PER COUNTY COMMENTS

DATE: 9/23/2025
 DRAWN BY: B. PERDUE
 DESIGNED BY: B. PERDUE
 CHECKED BY: C. SHIFFLETT
 SCALE: 1" = 40"

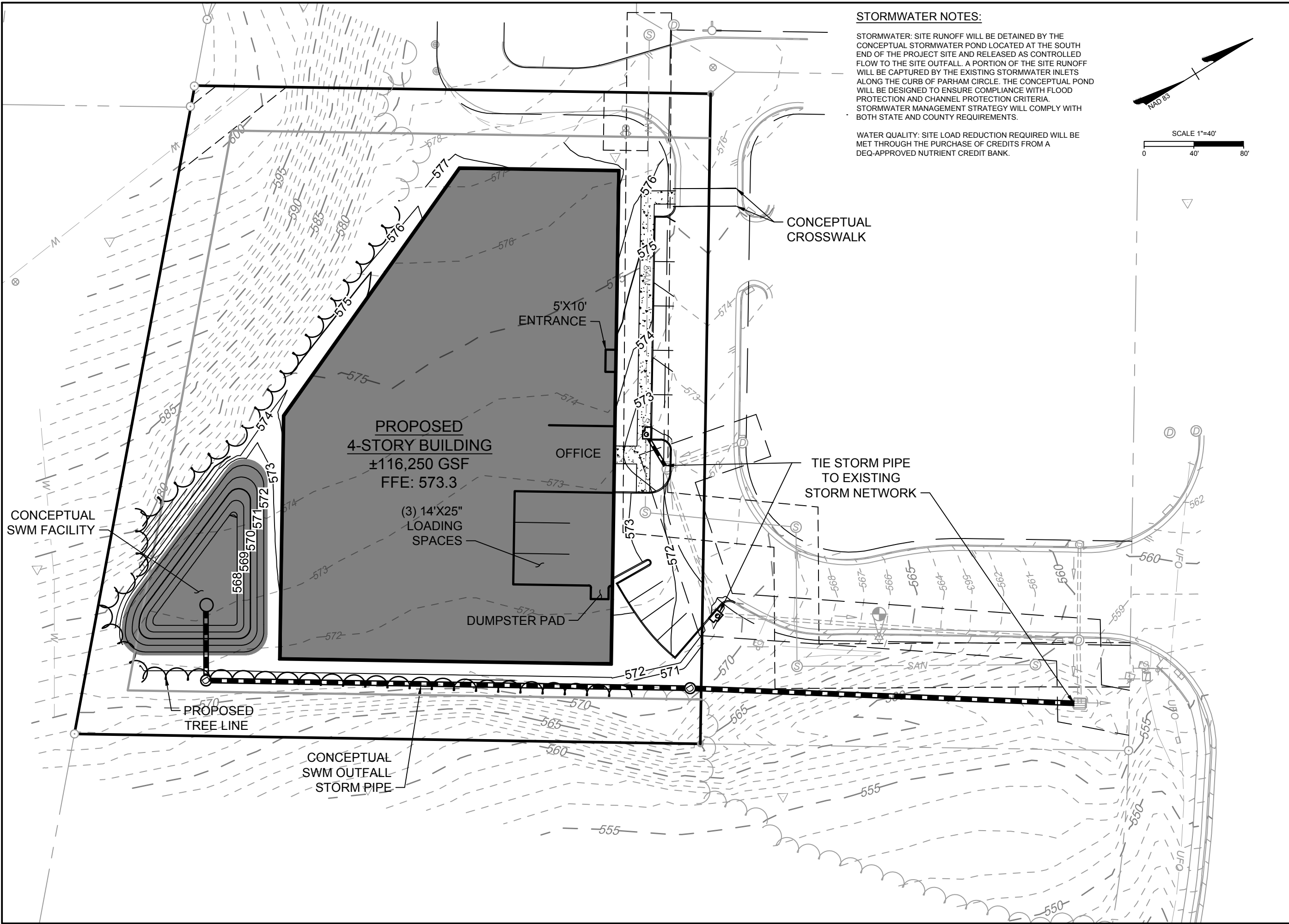
TIMMONS GROUP

ALBEMARLE COUNTY, VIRGINIA
PARHAM CIRCLE STORAGE
 LAYOUT & UTILITY PLAN

JOB NO.
74398
 SHEET NO.
5

These plans and associated documents are the exclusive property of TIMMONS GROUP and may not be reproduced in whole or in part and shall not be used for any purpose whatsoever, inclusive, but not limited to construction, bidding, and/or construction taking without the express written consent of TIMMONS GROUP.

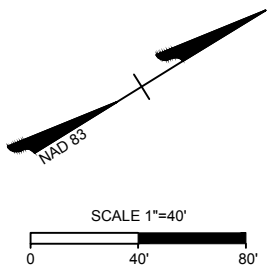
S:\10374398-Parham_Circle_Storage\DWG\Sheet\Re zoning Application Plan\74398C-GRAD.dwg | Plotted on 2/11/2026 4:15 PM | by Kevin Flynn



STORMWATER NOTES:

STORMWATER: SITE RUNOFF WILL BE DETAINED BY THE CONCEPTUAL STORMWATER POND LOCATED AT THE SOUTH END OF THE PROJECT SITE AND RELEASED AS CONTROLLED FLOW TO THE SITE OUTFALL. A PORTION OF THE SITE RUNOFF WILL BE CAPTURED BY THE EXISTING STORMWATER INLETS ALONG THE CURB OF PARHAM CIRCLE. THE CONCEPTUAL POND WILL BE DESIGNED TO ENSURE COMPLIANCE WITH FLOOD PROTECTION AND CHANNEL PROTECTION CRITERIA. STORMWATER MANAGEMENT STRATEGY WILL COMPLY WITH BOTH STATE AND COUNTY REQUIREMENTS.

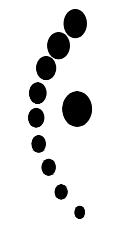
WATER QUALITY: SITE LOAD REDUCTION REQUIRED WILL BE MET THROUGH THE PURCHASE OF CREDITS FROM A DEQ-APPROVED NUTRIENT CREDIT BANK.



THIS DRAWING PREPARED AT THE
CHARLOTTEVILLE OFFICE
 608 Preston Avenue, Suite 200 | Charlottesville, VA 22903
 TEL 434.295.5624 FAX 434.295.8317 www.timmons.com

YOUR VISION ACHIEVED THROUGH OURS.

DATE	REVISION DESCRIPTION
12/19/2025	REVISED PER COUNTY COMMENTS
2/11/2026	REVISED PER COUNTY COMMENTS



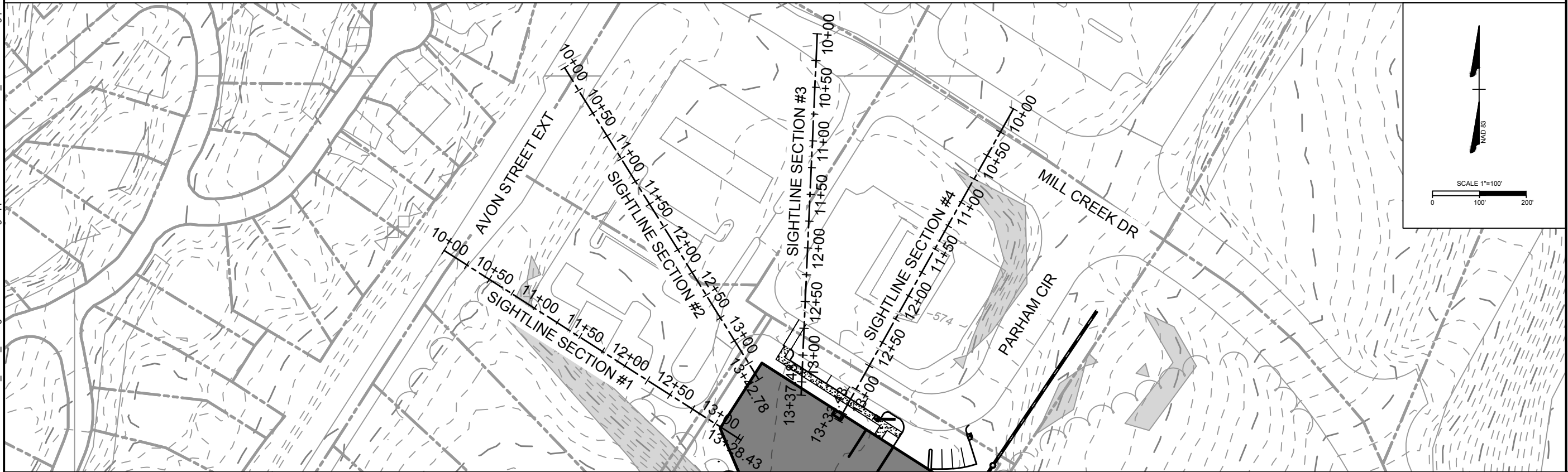
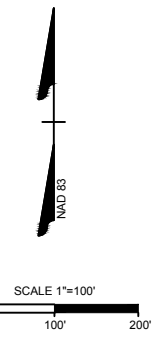
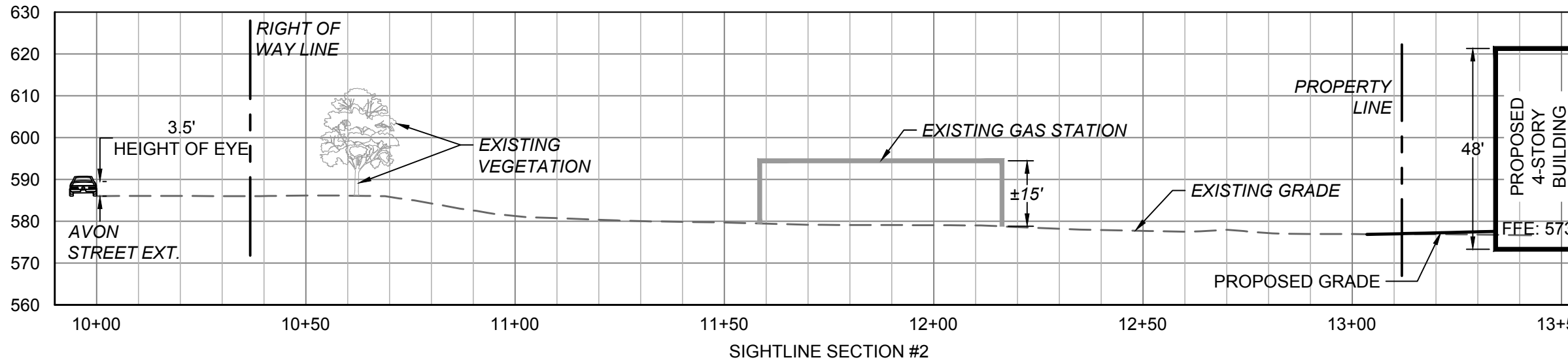
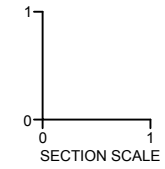
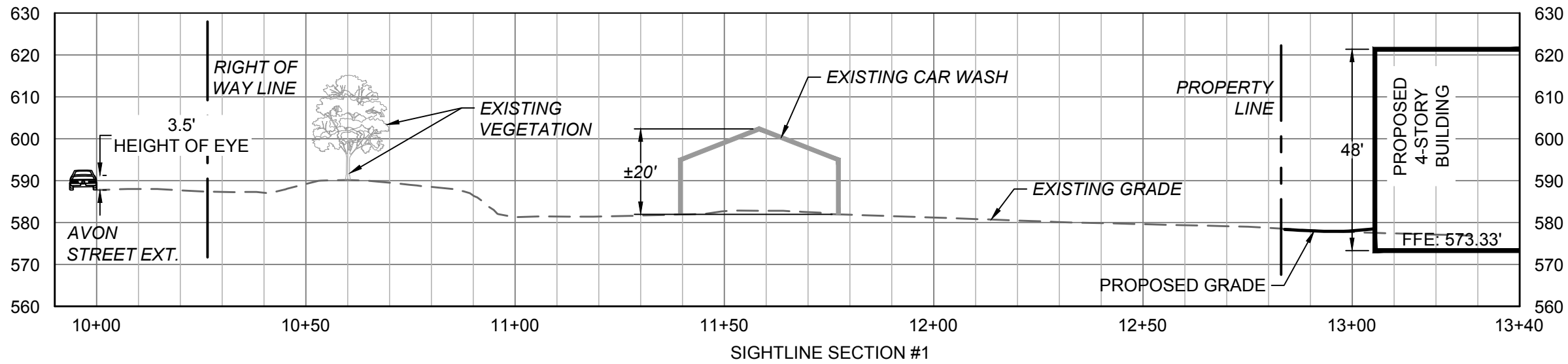
TIMMONS GROUP

PARHAM CIRCLE STORAGE
 ALBEMARLE COUNTY, VIRGINIA
GRADING AND STORMWATER MANAGEMENT PLAN

JOB NO.
74398
 SHEET NO.
6

These plans and associated documents are the exclusive property of TIMMONS GROUP and may not be reproduced in whole or in part and shall not be used for any purpose whatsoever, inclusive, but not limited to construction, bidding, and/or construction staking without the express written consent of TIMMONS GROUP.

S:\10374398-Parham_Circle_Storage\DWG\Sheet\Resizing Application Plan\74398C-SITE_SECTIONS.dwg | Plotted on 2/11/2026 4:15 PM | by Kevin Flynn



THIS DRAWING PREPARED AT THE
CHARLOTTEVILLE OFFICE
608 Preston Avenue, Suite 200 | Charlottesville, VA 22903
TEL 434.295.5624 FAX 434.295.8317 www.timmons.com

YOUR VISION ACHIEVED THROUGH OURS.

REVISION DESCRIPTION

DATE

12/19/2025	REVISED PER COUNTY COMMENTS
2/11/2026	REVISED PER COUNTY COMMENTS

DATE

DRAWN BY

DESIGNED BY

CHECKED BY

SCALE

9/23/2025	B. PERDUE
B. PERDUE	C. SHIFFLETT
N/A	

TIMMONS GROUP

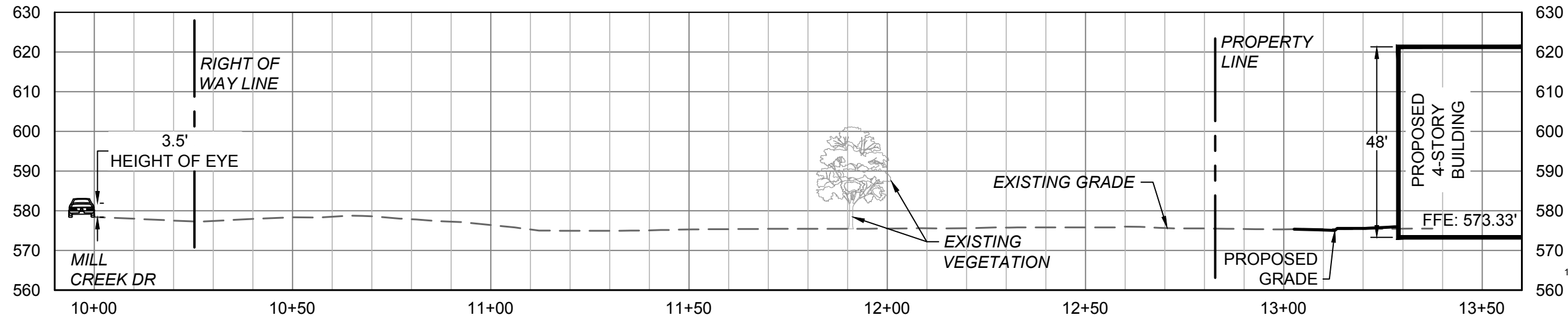
PARHAM CIRCLE STORAGE
ALBEMARLE COUNTY, VIRGINIA
SITE CROSS SECTIONS

JOB NO.
74398

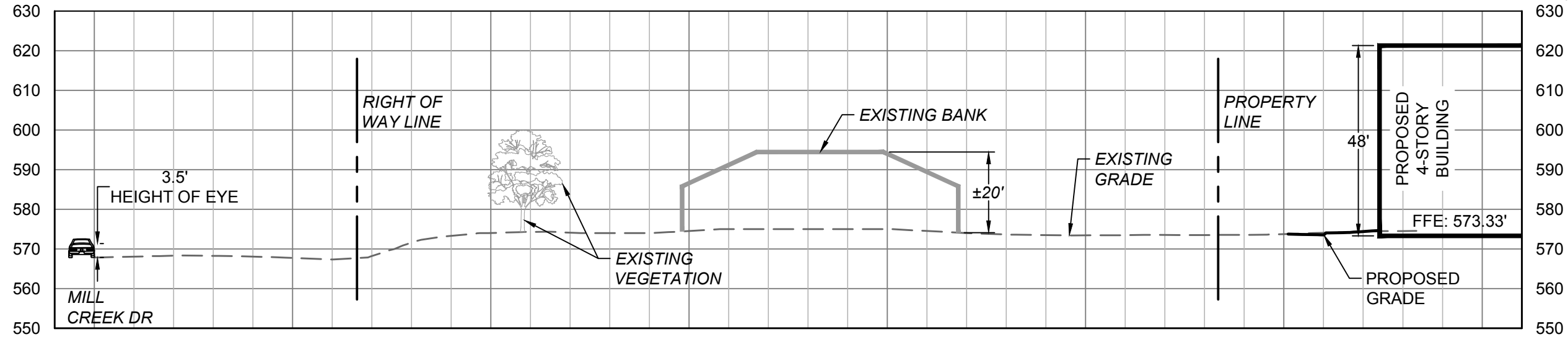
SHEET NO.
7

These plans and associated documents are the exclusive property of TIMMONS GROUP and may not be reproduced in whole or in part and shall not be used for any purpose whatsoever, inclusive, but not limited to construction, bidding, and/or construction taking without the express written consent of TIMMONS GROUP.

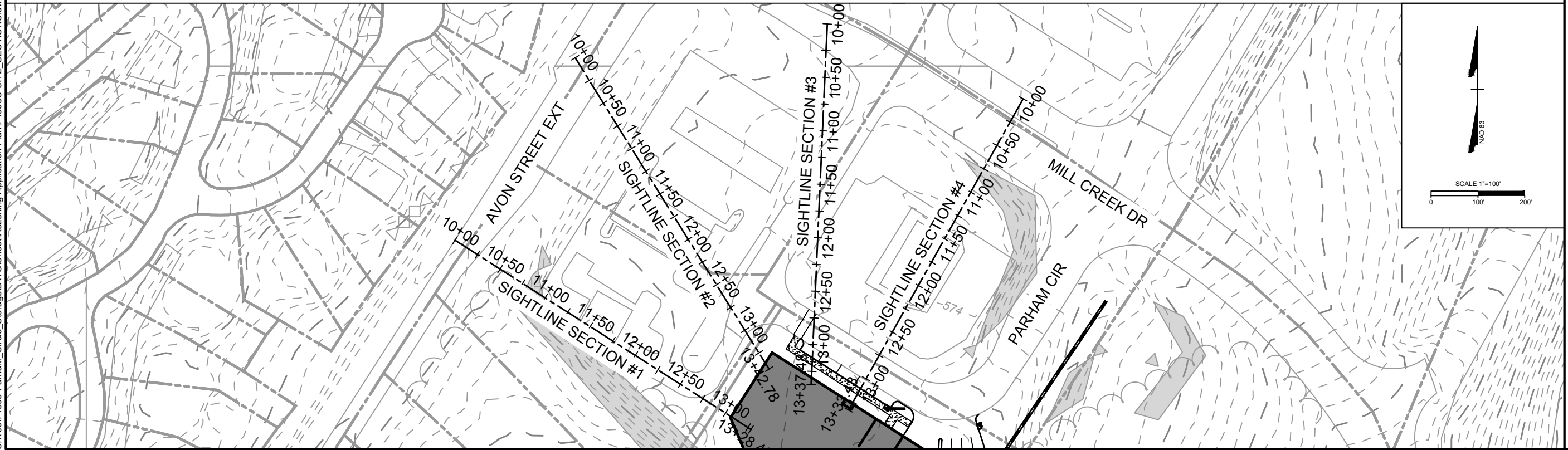
S:\10374398-Parham_Circle_Storage\DWG\Sheet\Resizing Application Plan\74398C-SITE_SECTIONS.dwg | Plotted on 2/11/2026 4:15 PM | by Kevin Flynn



SIGHTLINE SECTION #3



SIGHTLINE SECTION #4



THIS DRAWING PREPARED AT THE
CHARLOTTEVILLE OFFICE
 608 Preston Avenue, Suite 200 | Charlottesville, VA 22903
 TEL 434.295.5624 FAX 434.295.8317 www.timmons.com

YOUR VISION ACHIEVED THROUGH OURS.

DATE	REVISION DESCRIPTION
12/19/2025	REVISED PER COUNTY COMMENTS
2/11/2026	REVISED PER COUNTY COMMENTS

DATE	9/23/2025
DRAWN BY	B. PERDUE
DESIGNED BY	B. PERDUE
CHECKED BY	C. SHIFFLETT
SCALE	N/A

TIMMONS GROUP

PARHAM CIRCLE STORAGE
 ALBEMARLE COUNTY, VIRGINIA
 SITE CROSS SECTIONS

JOB NO.	74398
SHEET NO.	8

These plans and associated documents are the exclusive property of TIMMONS GROUP and may not be reproduced in whole or in part and shall not be used for any purpose whatsoever, inclusive, but not limited to construction, bidding, and/or construction taking without the express written consent of TIMMONS GROUP.