



ROUDABUSH, GALE & ASSOC., Inc.
A PROFESSIONAL CORPORATION *Serving Virginia Since 1956*

October 21, 2021

Cameron Langille
Principal Planner, Albemarle County Department of Community Development
401 McIntire Road
Charlottesville, VA 22902

RE: Belvedere Special Exception #

Dear Cameron:

This special exception application is specific to Belvedere NMD Blocks 8 and 10 and requests a shift in an open space connection in Phase 3, Block 10. In support of this request, I offer the following justifications.

Phase 3, Block 10 Open Space Shift

Exhibit 5C in the COD identifies open space connection between the perimeter open space and the loop. This area is highlighted in yellow in Figure 1. Our request is to shift this area southward to the area highlighted in orange.

The original space was a graded open space and provided a pedestrian connection between the perimeter trail and the street-side pedestrian network. The proposal maintains the location of the pedestrian connection, but shifts the open space to serve as a break between the attached and single family detached units. Additionally, the open space shift was made to align the space with the secondary connection required between the adjacent parcel outside the NMD and Block 10. See Figure 2.

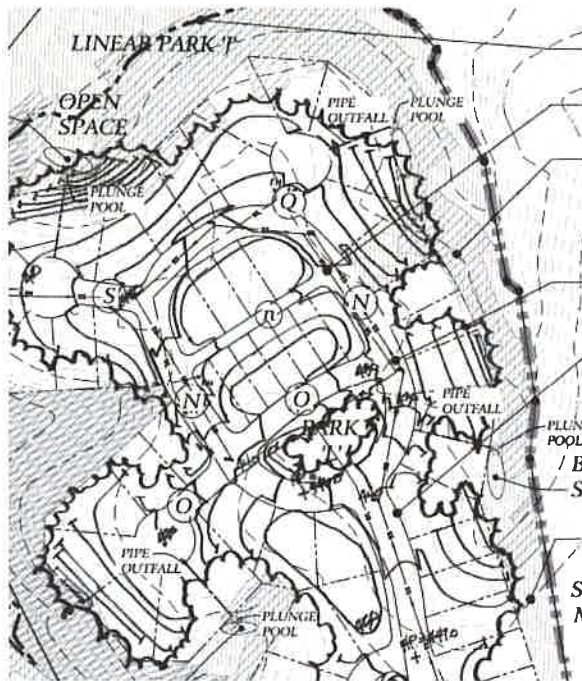


Figure 1

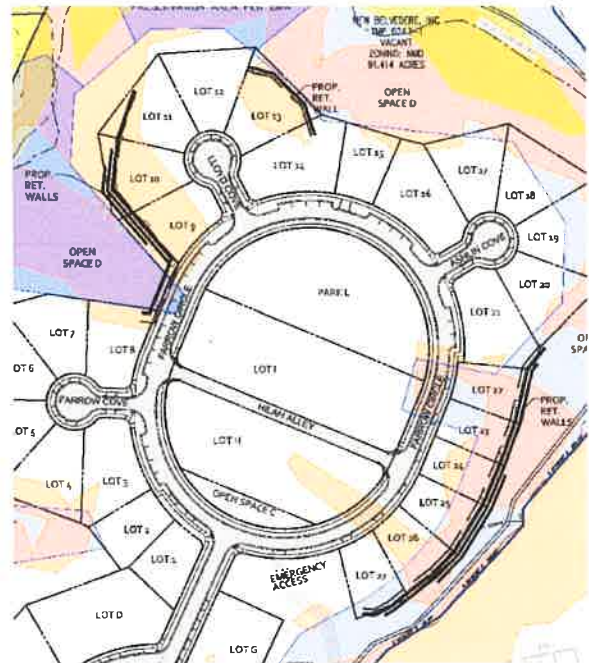


Figure 2

Thank you for your consideration regarding this request. It is our hope that upon review, you will agree with the provided justifications. Please feel free to contact me with any questions.

Sincerely,

Don Franco

