

Easements - County Owned Parcel 09100-00-00-002E0

Public Hearing

Bill Strother

Chief of Facilities and Operations

bstrother@albemarle.org



Introduction

Albemarle County Public Schools is preparing to construct Mountain View Upper Elementary School on the land parcel behind Fire & Rescue Station 11 along Mill Creek Drive.

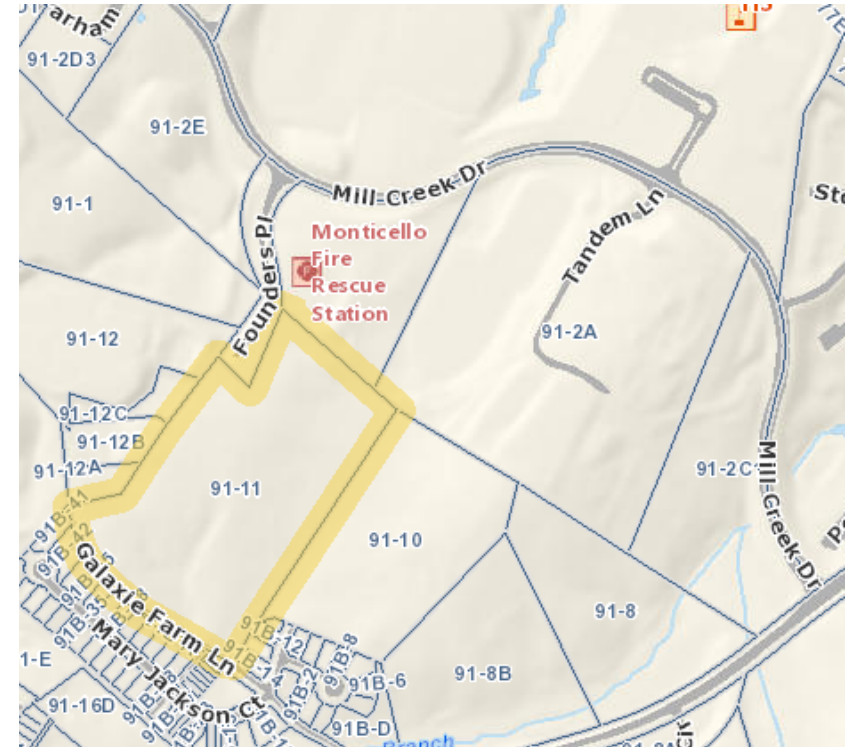


Parcel Locations



Parcel 09100-00-00-002E0 (91-2E)

- County Owned
- Albemarle Fire & Rescue Station 11

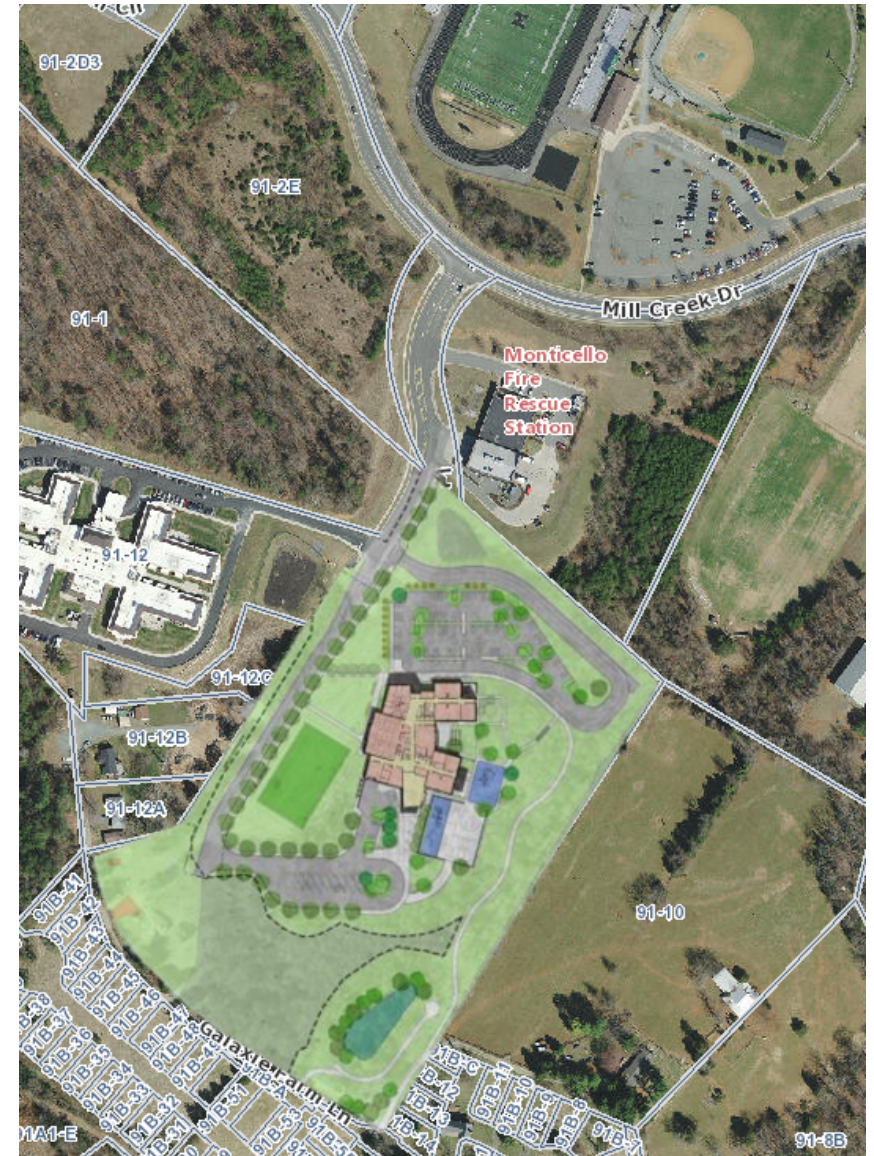


Parcel 09100-00-00-01100 (91-11)

- Albemarle School Board Owned
- Future home of Mountain View Upper Elementary School



Easements and Public Use Dedication are necessary to support the construction and future operations of Mountain View Upper Elementary School.





Purpose

- In preparation for the construction of Mountain View Upper Elementary School, the following have been requested:
 1. A temporary construction easement
 2. A Sanitary Sewer easement
 3. Additional Right of Way Dedicated to Public Use
 4. An Extension of Existing Drainage Easement



Temporary Construction Easement

- This easement will allow for ACPS to carry out essential construction work.
 - Widening of Founders Place
 - Adding additional sidewalk
 - Updating ADA curb ramps
 - Installing necessary Utilities (Water & Sewer)



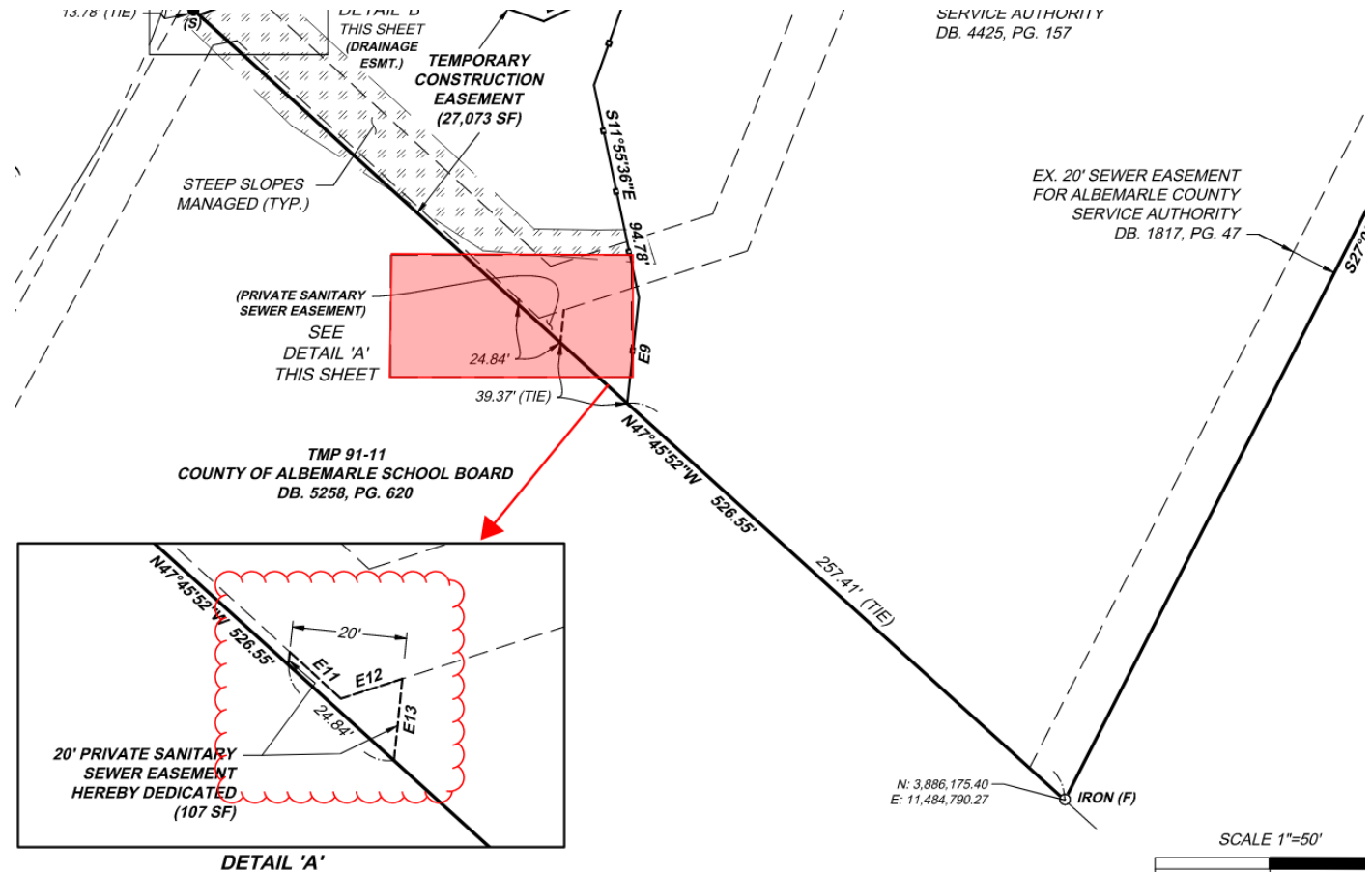


Sanitary Sewer Easement

This easement is necessary for installation and maintenance of a private sanitary sewer line connecting the new Elementary School to the existing Albemarle County Service Authority Infrastructure located on Albemarle County parcel 09100-00-00-002E0 (91-2E).



Sanitary Sewer Easement





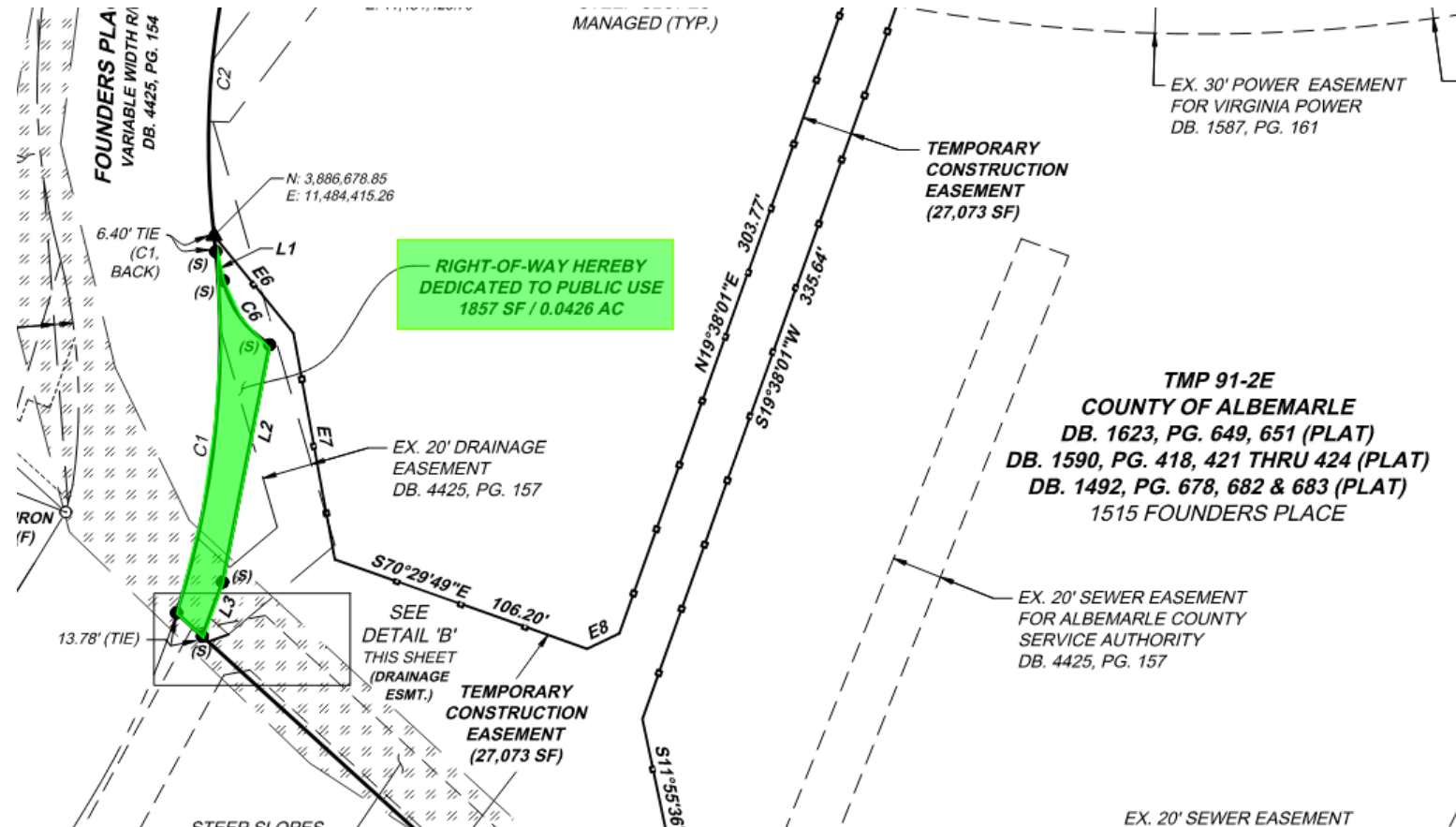
Right of Way Dedicated to Public Use

This dedication is necessary for the widening of Founders Place and installation of additional sidewalk to support the new elementary school.

Request the additional Right of Way be dedicated for public use.



Right-of-Way Dedicated to Public Use



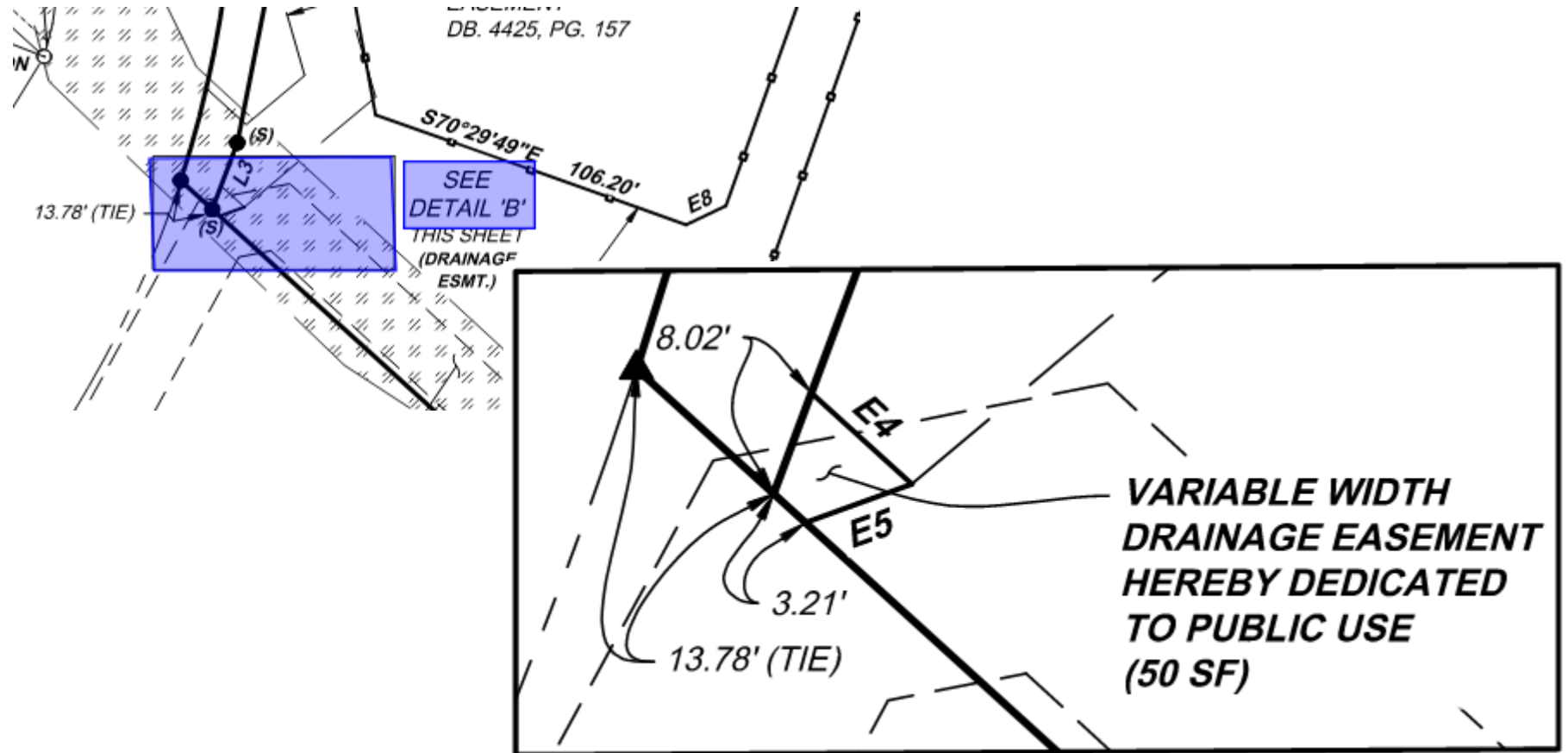


Extension of Existing Drainage Easement

- The easement will enable effective management of stormwater runoff from the widening of Founders Place.
- This will prevent drainage issues onto the adjacent Fire Station 11 Property.



Drainage Easement





Summary

- Requests directly support the construction and future operations of Albemarle County Public School Mountain View Upper Elementary.
- County Local Government stake holders have reviewed and approved.
- Construction process will not interfere with ACFR Station 11 Operations.



Recommendation

Staff recommends that the Board adopt the attached Resolution (Attachment D) approving the easements and public right-of-way dedication to public use and authorized the County Executive to execute a deed and any other necessary or related documents to convey these interests.