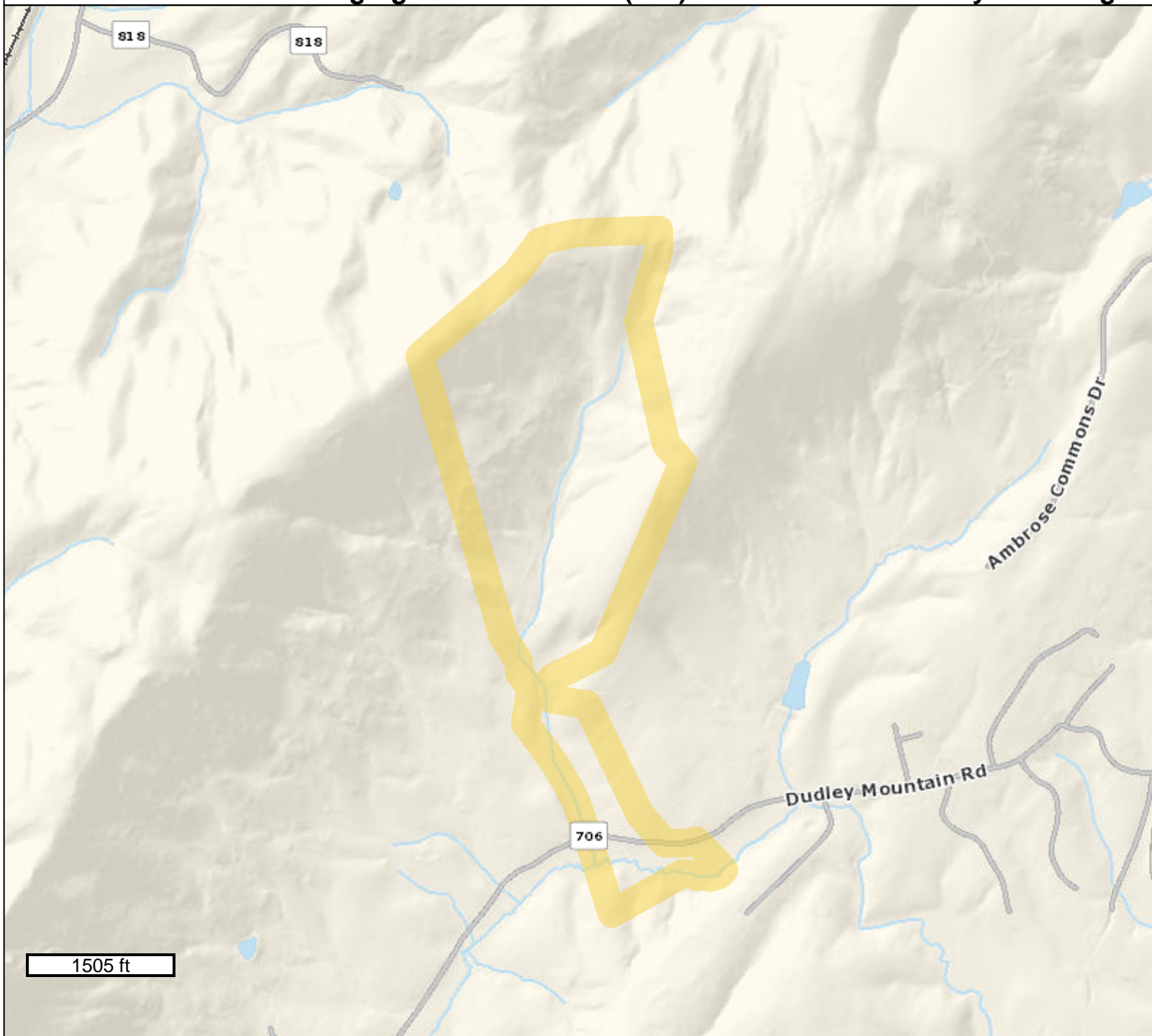
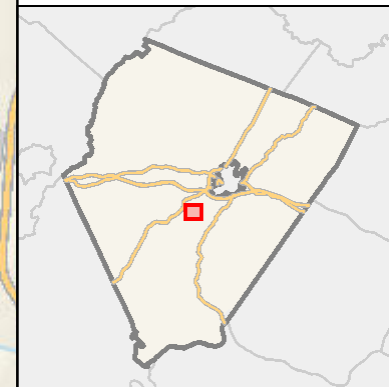


SP202400023 Congregation Beth Israel (CBI) Forest School - Dudley - Existing Conditions Map



Legend

(Note: Some items on map may not appear in legend)



GIS-Web
Geographic Data Services
www.albemarle.org/gis
(434) 296-5832

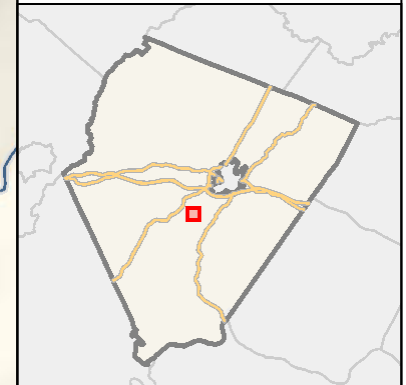
SP202400023 Congregation Beth Israel (CBI) Forest School - Dudley - Existing Conditions Map

Legend

(Note: Some items on map may not appear in legend)

Parcel Info

□ Parcels



GIS-Web
Geographic Data Services
www.albemarle.org/gis
(434) 296-5832

SP202400023 Congregation Beth Israel (CBI) Forest School - Dudley - Existing Conditions Map

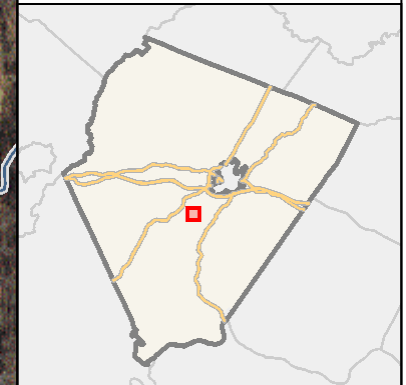


Legend

(Note: Some items on map may not appear in legend)

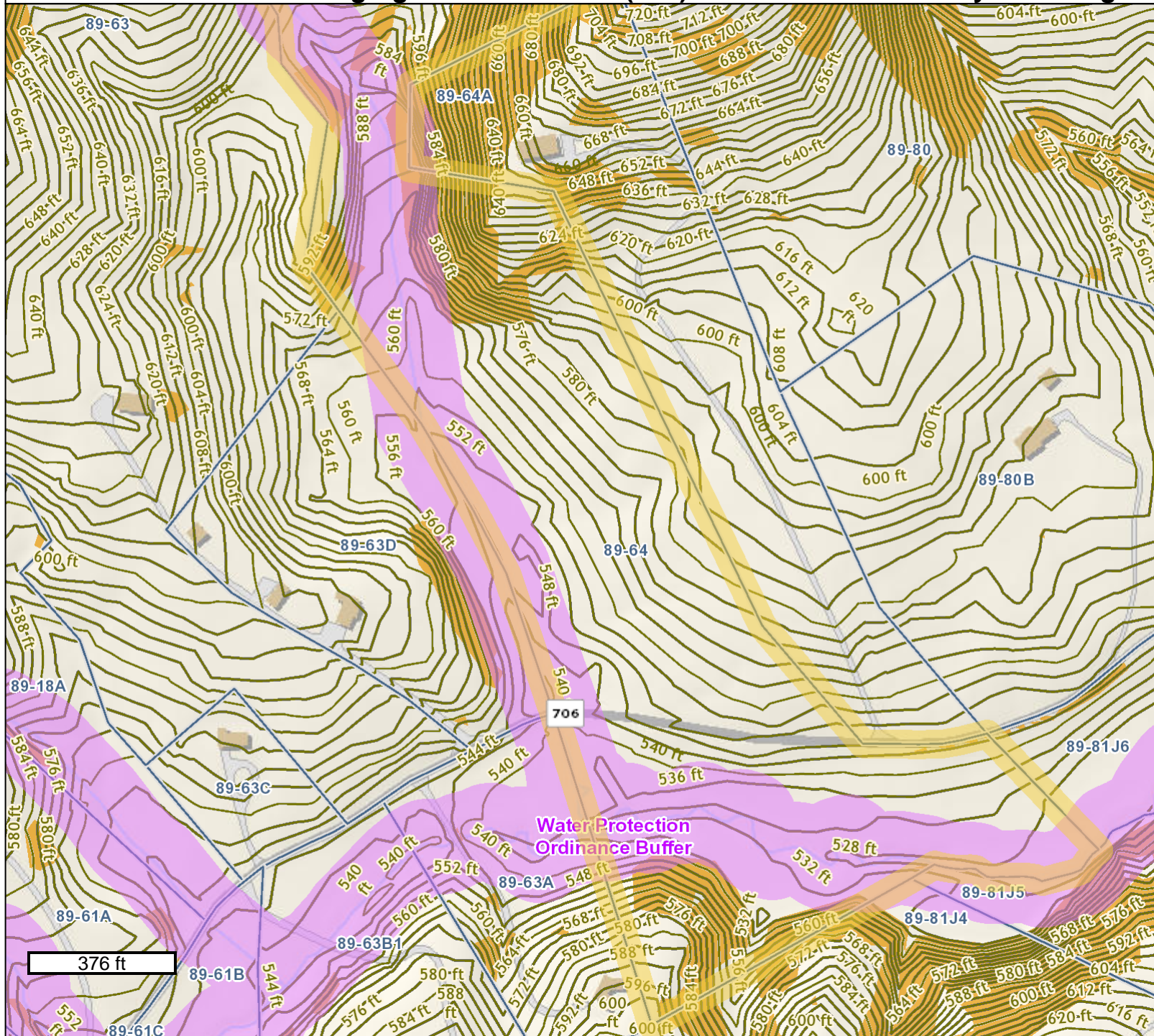
Parcel Info

- Parcels



GIS-Web
Geographic Data Services
www.albemarle.org/gis
(434) 296-5832

SP202400023 Congregation Beth Israel (CBI) Forest School - Dudley - Existing Conditions Map



Legend

(Note: Some items on map may not appear in legend)

Overlays

- Mountain Protection Areas
- Water Protection Ordinance Buffers

Parcel Info

- Parcels

Elevation

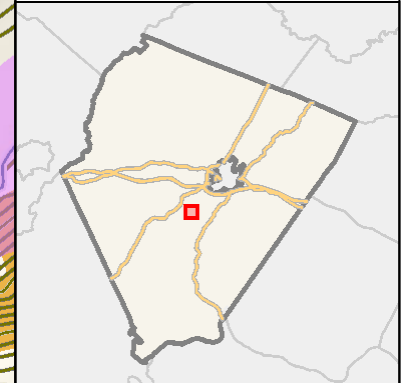
Y2018 Elevation Contours

- Y2018 Elevation Contours (100 ft)
- Y2018 Elevation Contours (60 ft)
- Y2018 Elevation Contours (40 ft)
- Y2018 Elevation Contours (20 ft)
- Y2018 Elevation Contours (4 ft)

Zoning Info

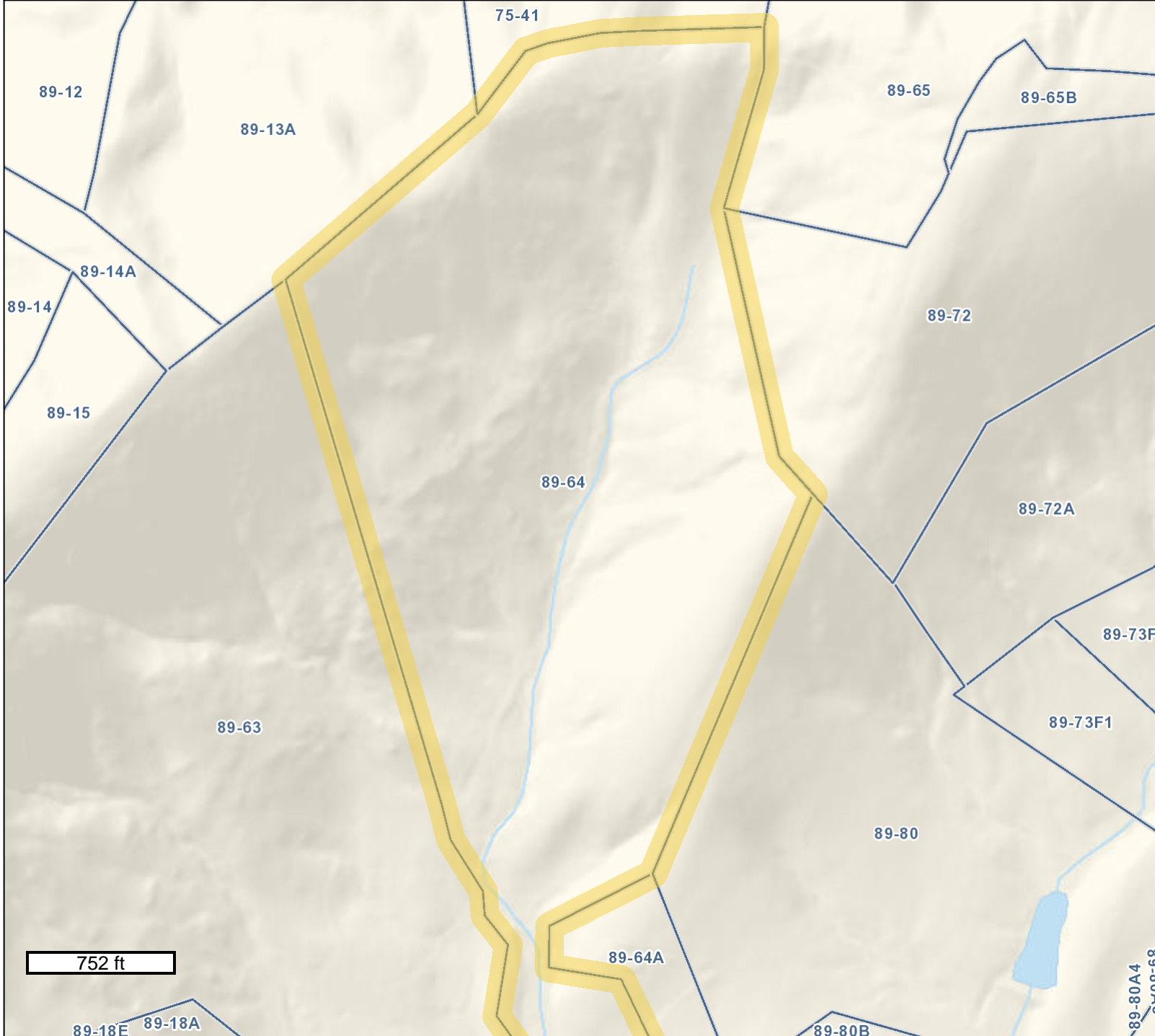
Steep Slopes Overlay

- Critical Slopes
- Steep Slopes - Managed
- Steep Slopes - Preserved



GIS-Web
Geographic Data Services
www.albemarle.org/gis
(434) 296-5832

SP202400023 Congregation Beth Israel (CBI) Forest School - Dudley - Existing Conditions Map

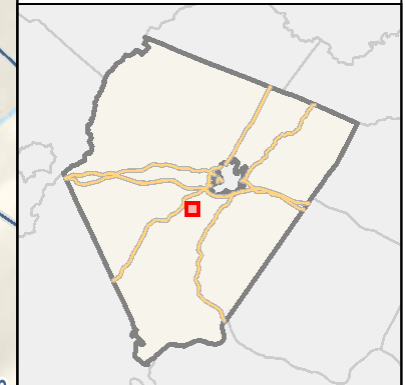


Legend

(Note: Some items on map may not appear in legend)

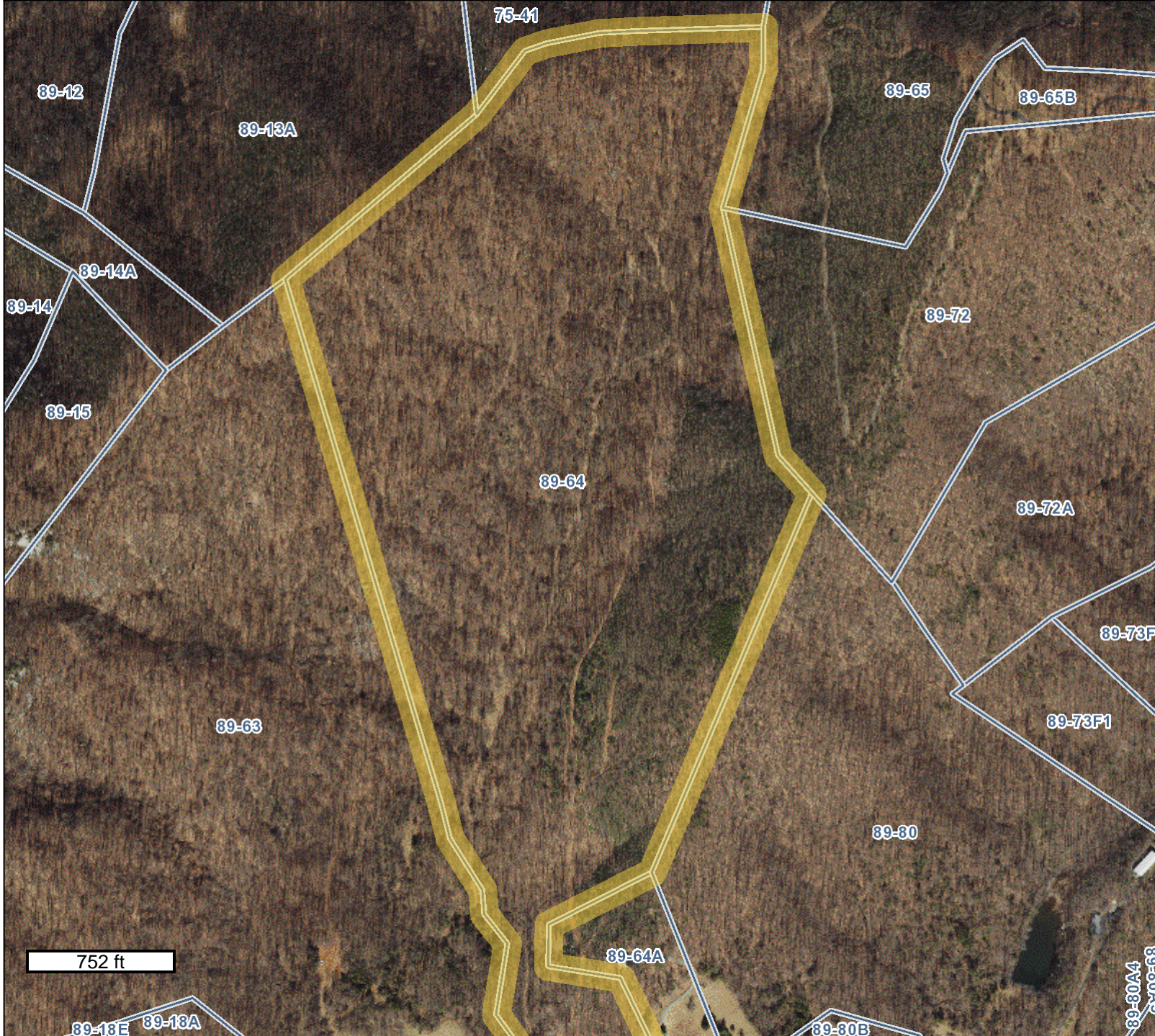
Parcel Info

- Parcels



GIS-Web
Geographic Data Services
www.albemarle.org/gis
(434) 296-5832

SP202400023 Congregation Beth Israel (CBI) Forest School - Dudley - Existing Conditions Map

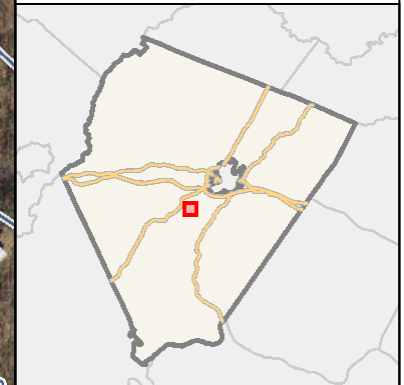


Legend

(Note: Some items on map may not appear in legend)

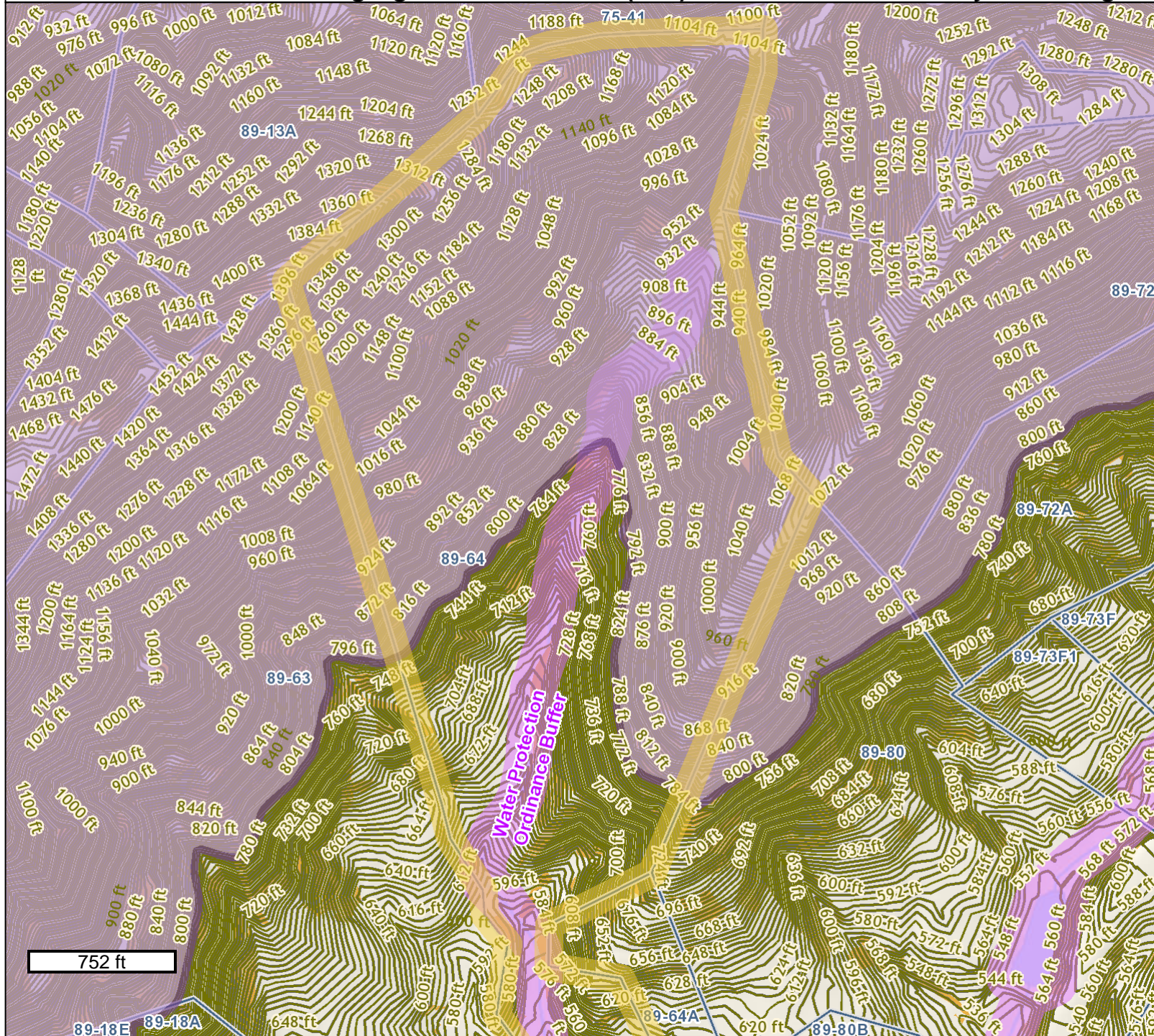
Parcel Info

- Parcels



GIS-Web
Geographic Data Services
www.albemarle.org/gis
(434) 296-5832

SP202400023 Congregation Beth Israel (CBI) Forest School - Dudley - Existing Conditions Map



Legend

(Note: Some items on map may not appear in legend)

Overlays

- Mountain Protection Areas
- Water Protection Ordinance Buffers

Parcel Info

- Parcels

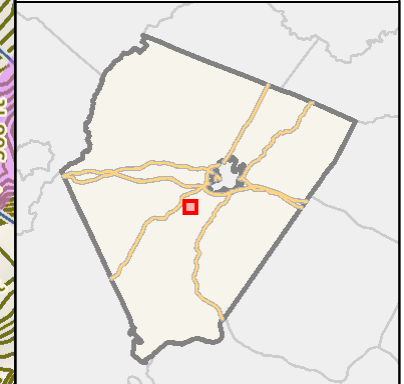
Elevation

Y2018 Elevation Contours

- Y2018 Elevation Contours (100 ft)
- Y2018 Elevation Contours (60 ft)
- Y2018 Elevation Contours (40 ft)
- Y2018 Elevation Contours (20 ft)
- Y2018 Elevation Contours (4 ft)

Zoning Info

- Steep Slopes Overlay
- Critical Slopes
- Steep Slopes - Managed
- Steep Slopes - Preserved



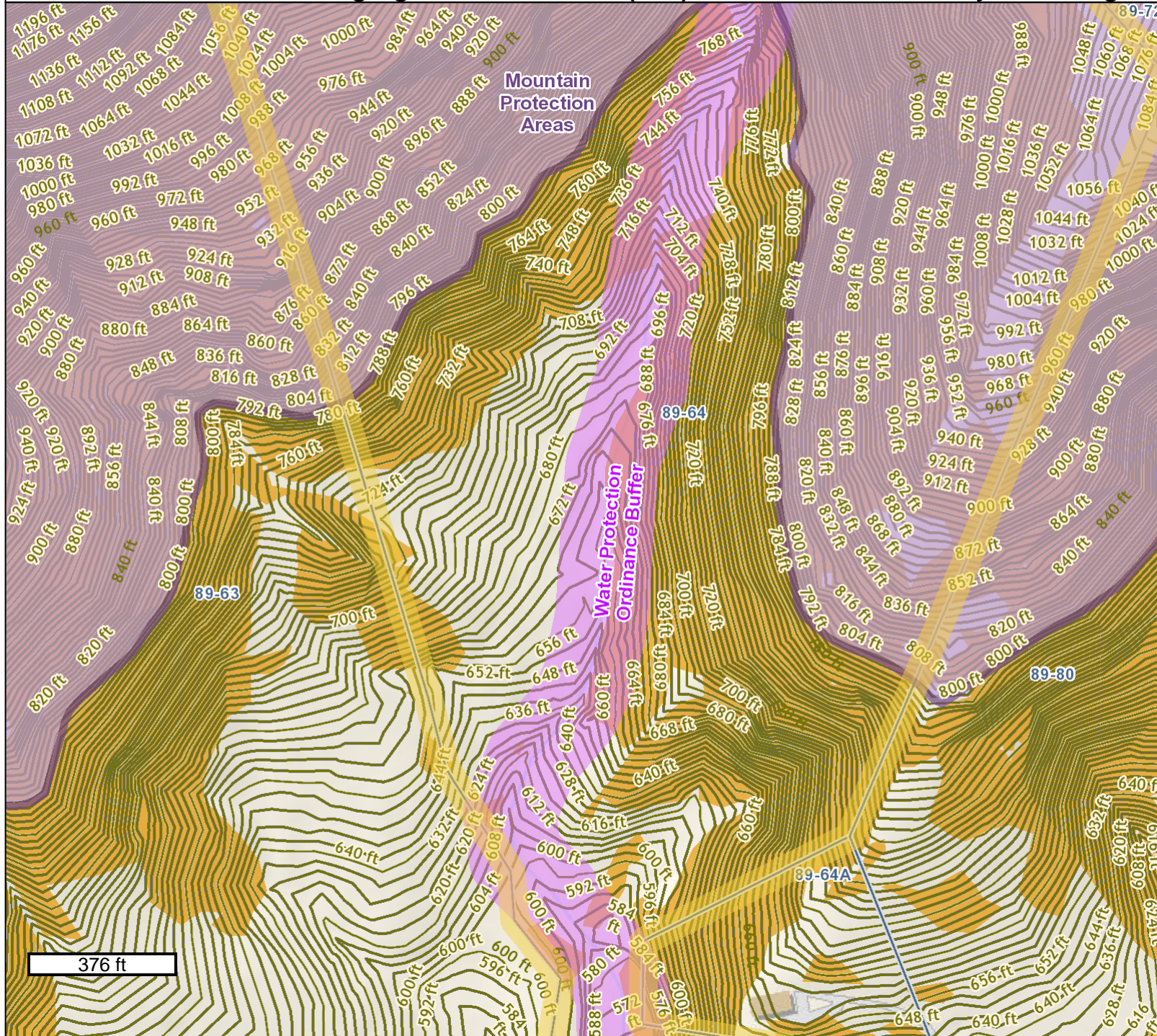
GIS-Web
Geographic Data Services
www.albemarle.org/gis
(434) 296-5832

Any determination of topography or contours, or any depiction of physical improvements, property lines or boundaries is for general information only and shall not be used for the design, modification, or construction of improvements to real property or for flood plain determination.

Map elements may scale larger than GIS data measured in the map or as provided on the data download page due to the projection used. Map Projection: WGS84 Web Mercator (Auxiliary Sphere) (EPSG 3857)

May 6, 2025

SP202400023 Congregation Beth Israel (CBI) Forest School - Dudley - Existing Conditions Map



Legend

(Note: Some items on map may not appear in legend)

Overlays

- Mountain Protection Areas
- Water Protection Ordinance Buffers

Parcel Info

- Parcels

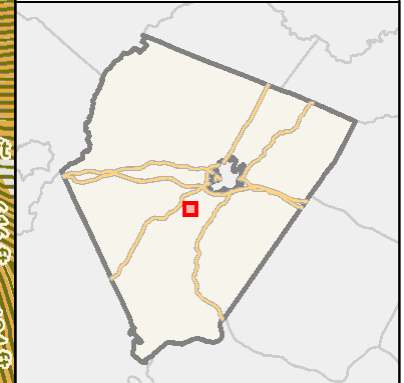
Elevation

Y2018 Elevation Contours

- Y2018 Elevation Contours (100 ft)
- Y2018 Elevation Contours (60 ft)
- Y2018 Elevation Contours (40 ft)
- Y2018 Elevation Contours (20 ft)
- Y2018 Elevation Contours (4 ft)

Zoning Info

- Steep Slopes Overlay
- Critical Slopes
- Steep Slopes - Managed
- Steep Slopes - Preserved



GIS-Web
Geographic Data Services
www.albemarle.org/gis
(434) 296-5832