

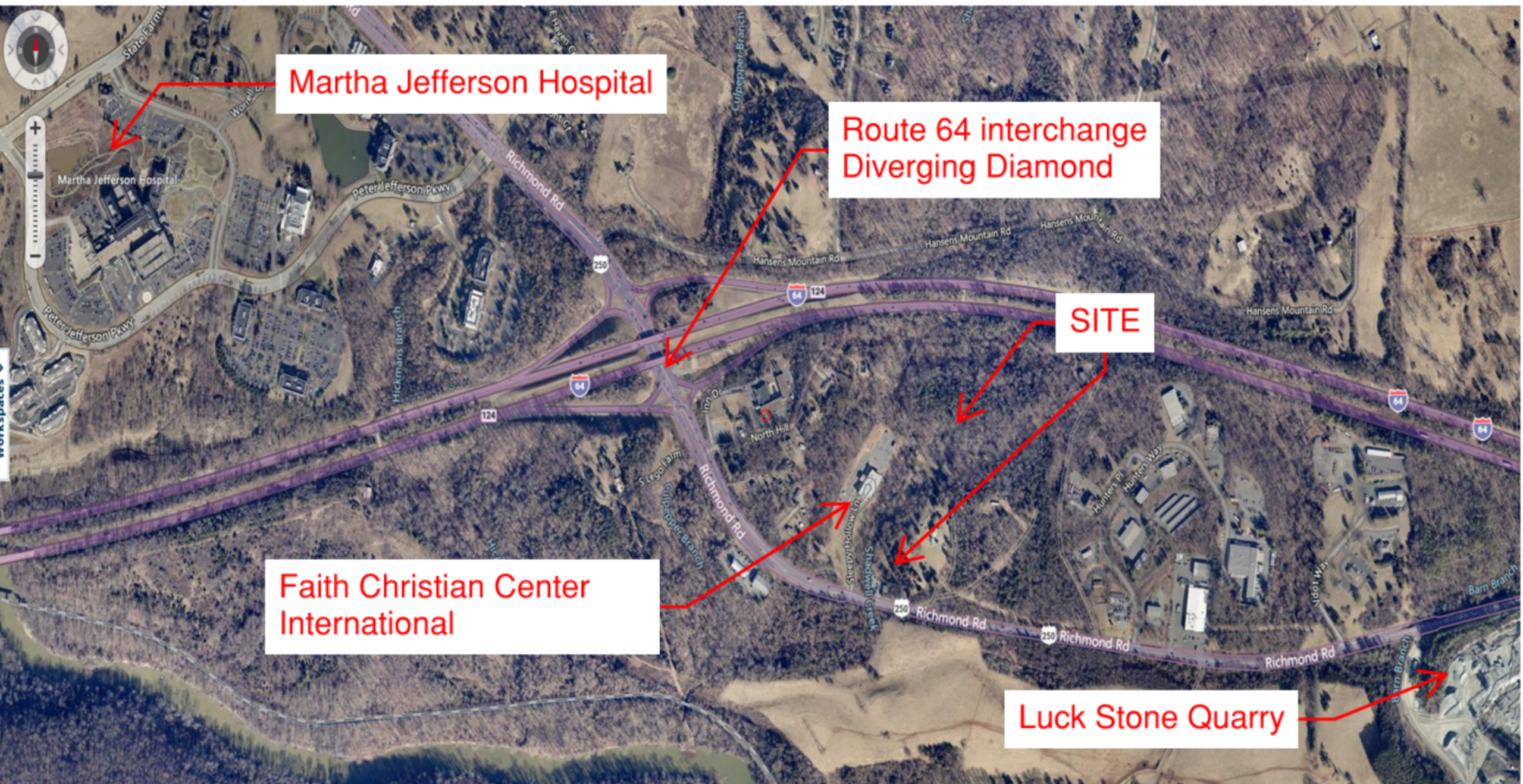


SE2025-00029

Access Setback Waiver for
Clean Earth Fill Activity

Board of Supervisors

November 19, 2025



Martha Jefferson Hospital

Route 64 interchange
Diverging Diamond

SITE

Faith Christian Center
International

Luck Stone Quarry



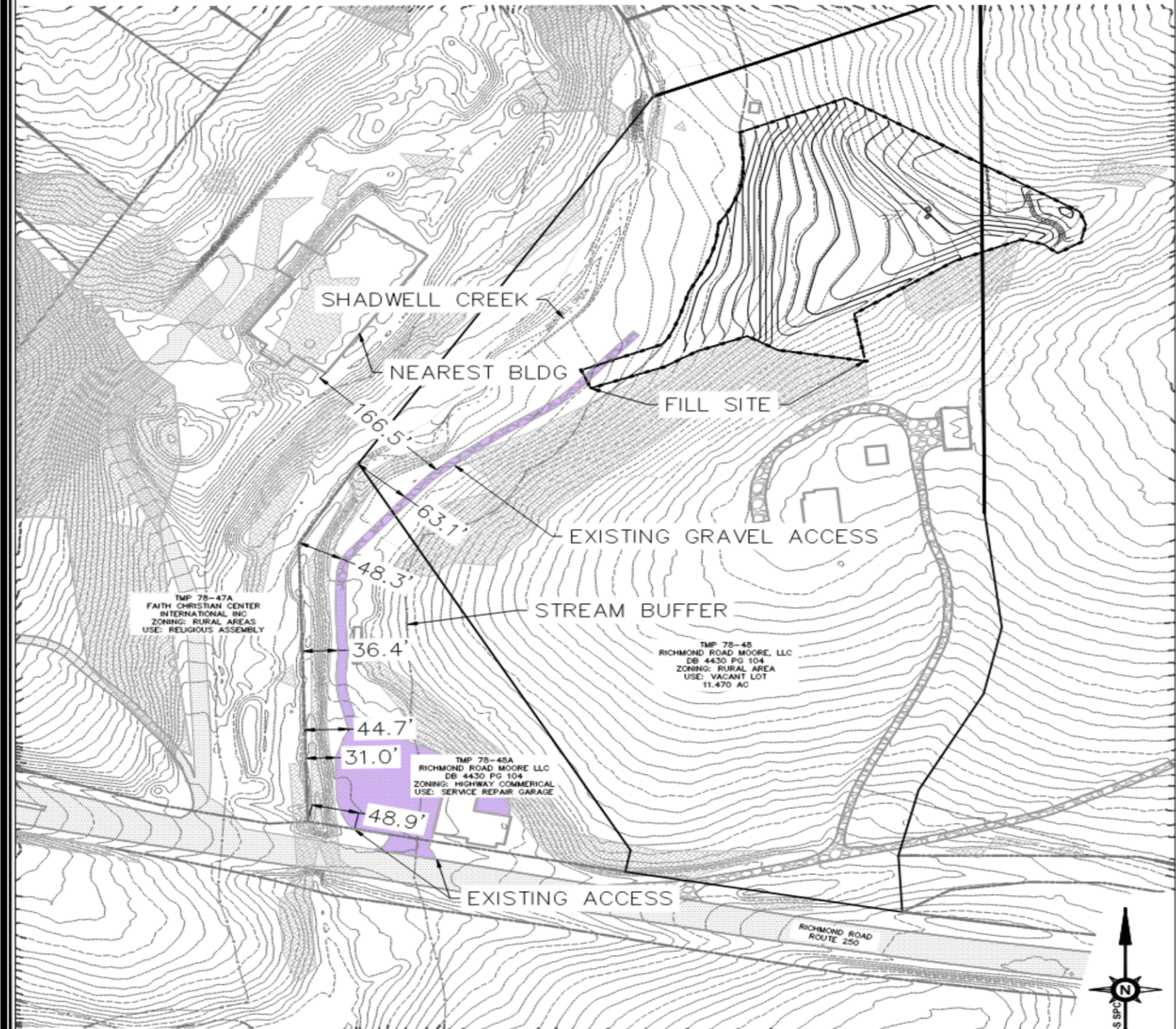
Request

- Special exception under County Code § 18-5.1.28(d) to waive one supplemental regulation for clean earth and inert waste fill activity on Parcel 48A.
- Access to the fill area is via an existing travelway on Parcel 48A that runs approximately 31 to just over 50 feet from the abutting church property line.



2238 Richmond Rd. Access Exhibit

ATTACHMENT B



SHIMP ENGINEERING, P.C.

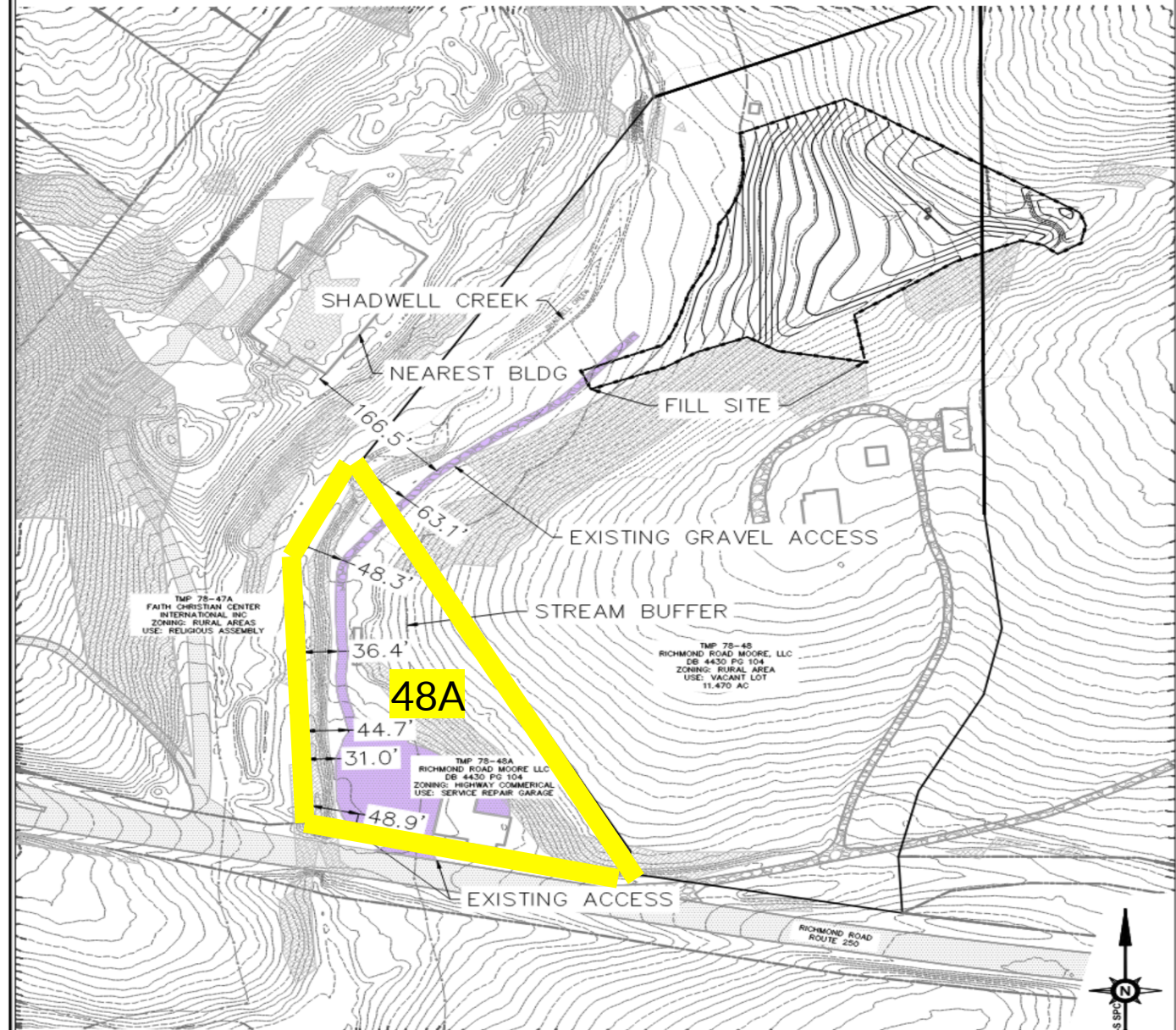
ENGINEERING - LAND PLANNING - PROJECT MANAGEMENT
912 EAST HIGH ST. PHONE: (434) 227-5140
CHARLOTTESVILLE, VA 22902 JUSTIN@SHIMP-ENGINEERING.COM





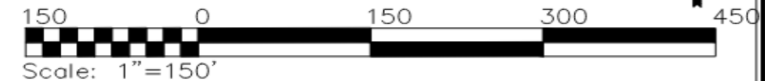
2238 Richmond Rd.
Access Exhibit

ATTACHMENT B



SHIMP ENGINEERING, P.C.

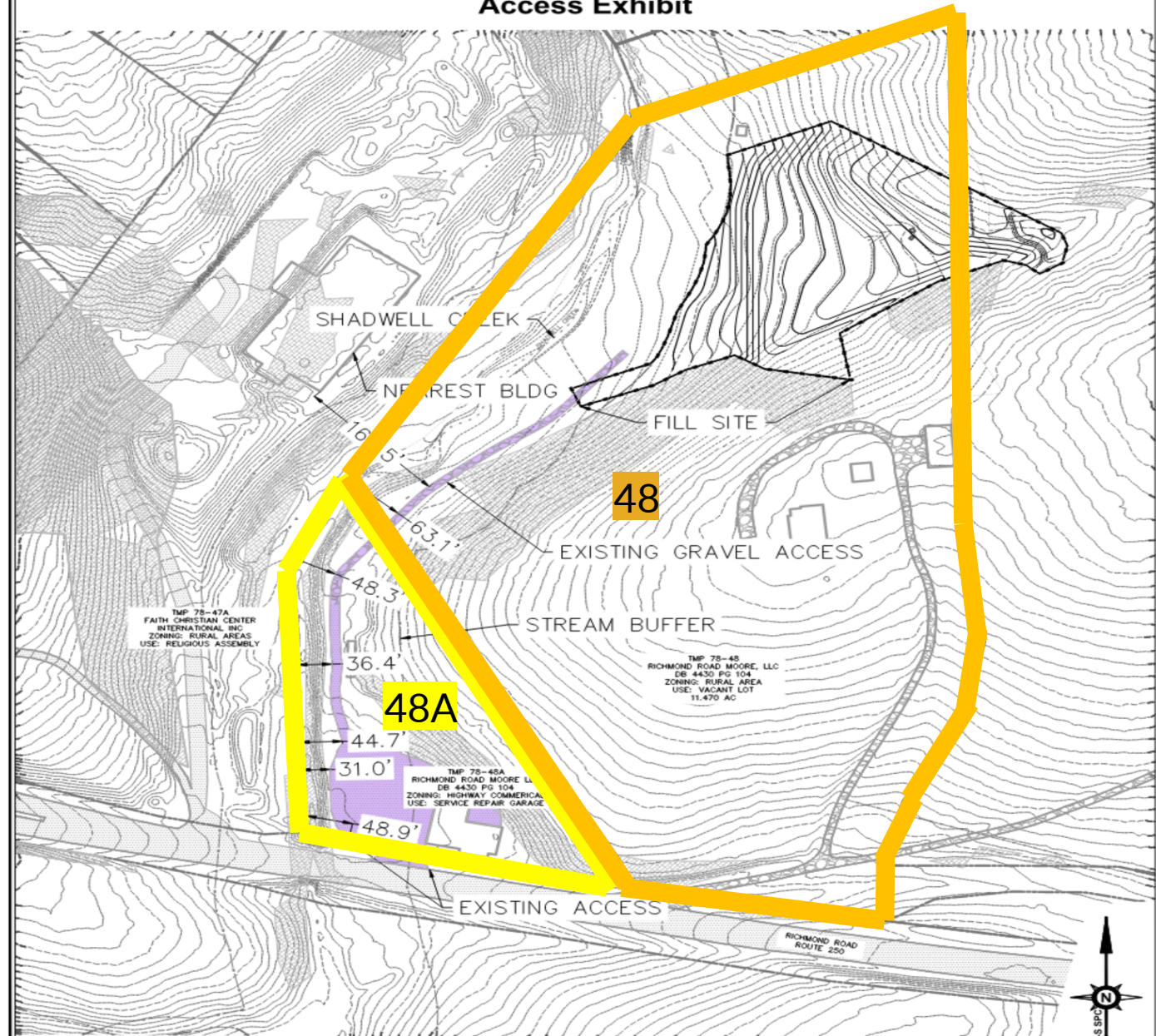
ENGINEERING - LAND PLANNING - PROJECT MANAGEMENT
912 EAST HIGH ST. PHONE: (434) 227-5140
CHARLOTTESVILLE, VA 22902 JUSTIN@SHIMP-ENGINEERING.COM





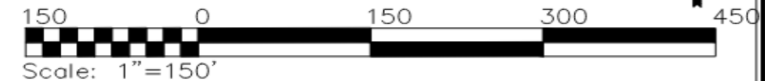
2238 Richmond Rd. Access Exhibit

ATTACHMENT B



SHIMP ENGINEERING, P.C.

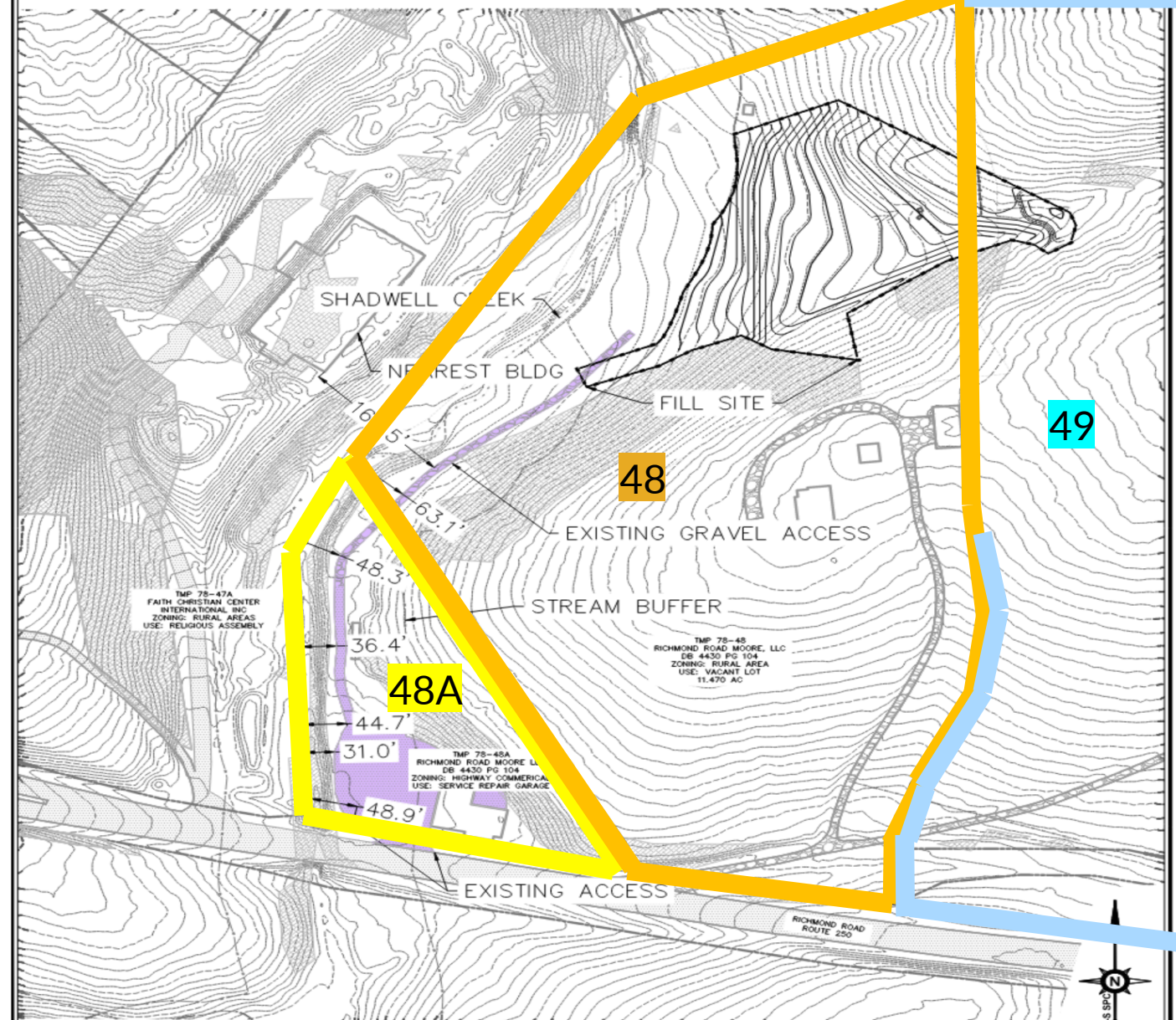
ENGINEERING - LAND PLANNING - PROJECT MANAGEMENT
912 EAST HIGH ST. PHONE: (434) 227-5140
CHARLOTTESVILLE, VA 22902 JUSTIN@SHIMP-ENGINEERING.COM





2238 Richmond Rd. Access Exhibit

ATTACHMENT B

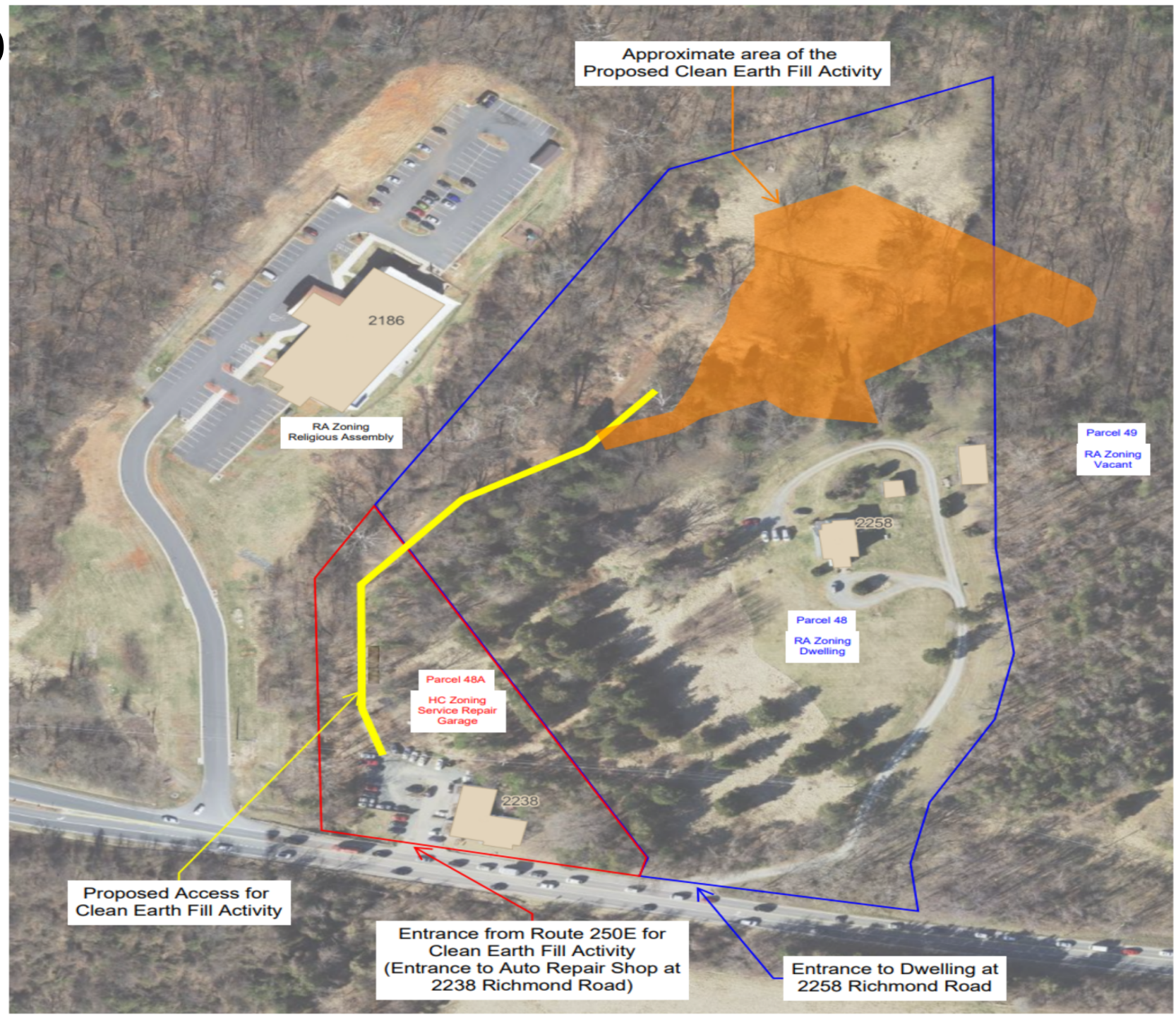


SHIMP ENGINEERING, P.C.

ENGINEERING - LAND PLANNING - PROJECT MANAGEMENT
912 EAST HIGH ST. PHONE: (434) 227-5140
CHARLOTTESVILLE, VA 22902 JUSTIN@SHIMP-ENGINEERING.COM



Map





Staff Analysis and Recommendation

Waiver of County Code § 18-5.1.28(a)(7) – access setback to proposed clean earth fill area.

- Staff finds no harm to public health, safety, or welfare.
- Per County Code § 18-5.1.28(d)(1)(iv), the exception is supported by the abutting owners impacted by the exception (Attachment E).
- Staff recommends that the Board adopt the proposed resolution (Attachment F).



Motion to Adopt

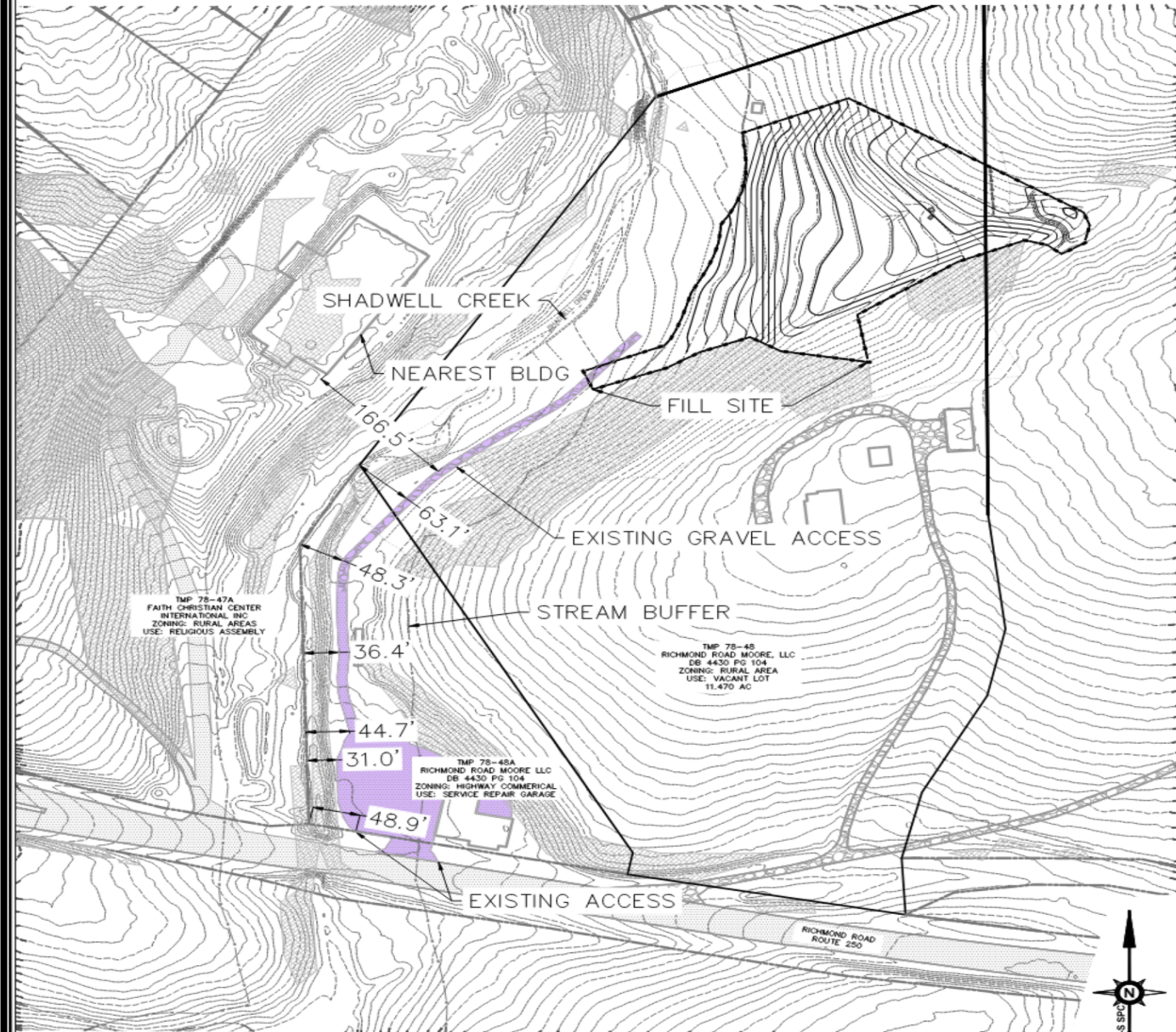
I move to adopt the resolution (Attachment F) to approve SE-2025-00029, 2238 Richmond Road - Access Setback for Clean Earth Fill Activity, for the reason stated in the staff report.





2238 Richmond Rd. Access Exhibit

ATTACHMENT B



SHIMP ENGINEERING, P.C.

ENGINEERING - LAND PLANNING - PROJECT MANAGEMENT
912 EAST HIGH ST. PHONE: (434) 227-5140
CHARLOTTESVILLE, VA 22902 JUSTIN@SHIMP-ENGINEERING.COM



