

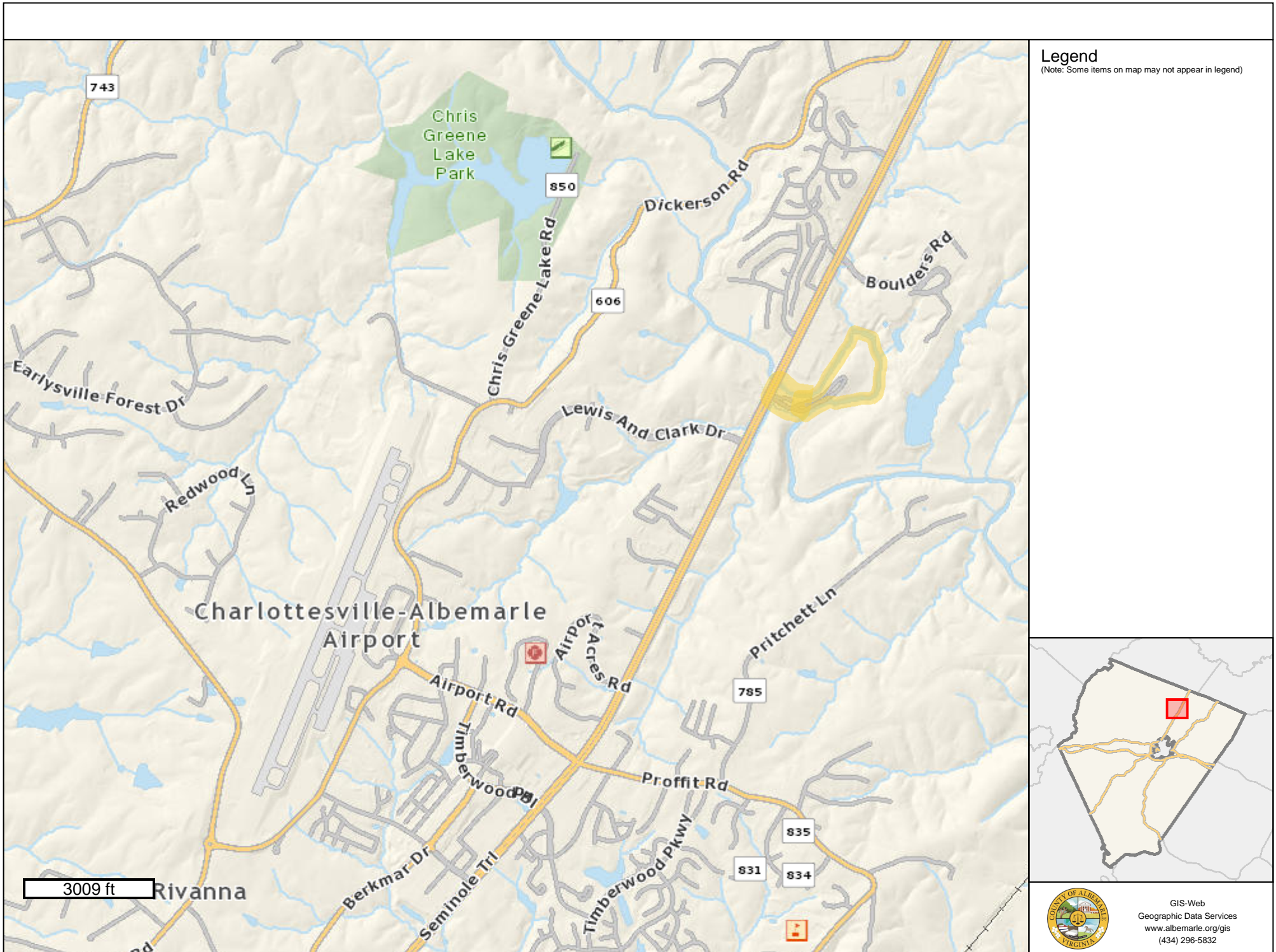
Legend
 (Note: Some items on map may not appear in legend)

Parcel Info
 Parcels

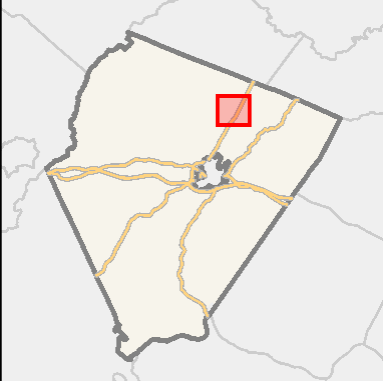
752 ft



GIS-Web
 Geographic Data Services
www.albemarle.org/gis
 (434) 296-5832

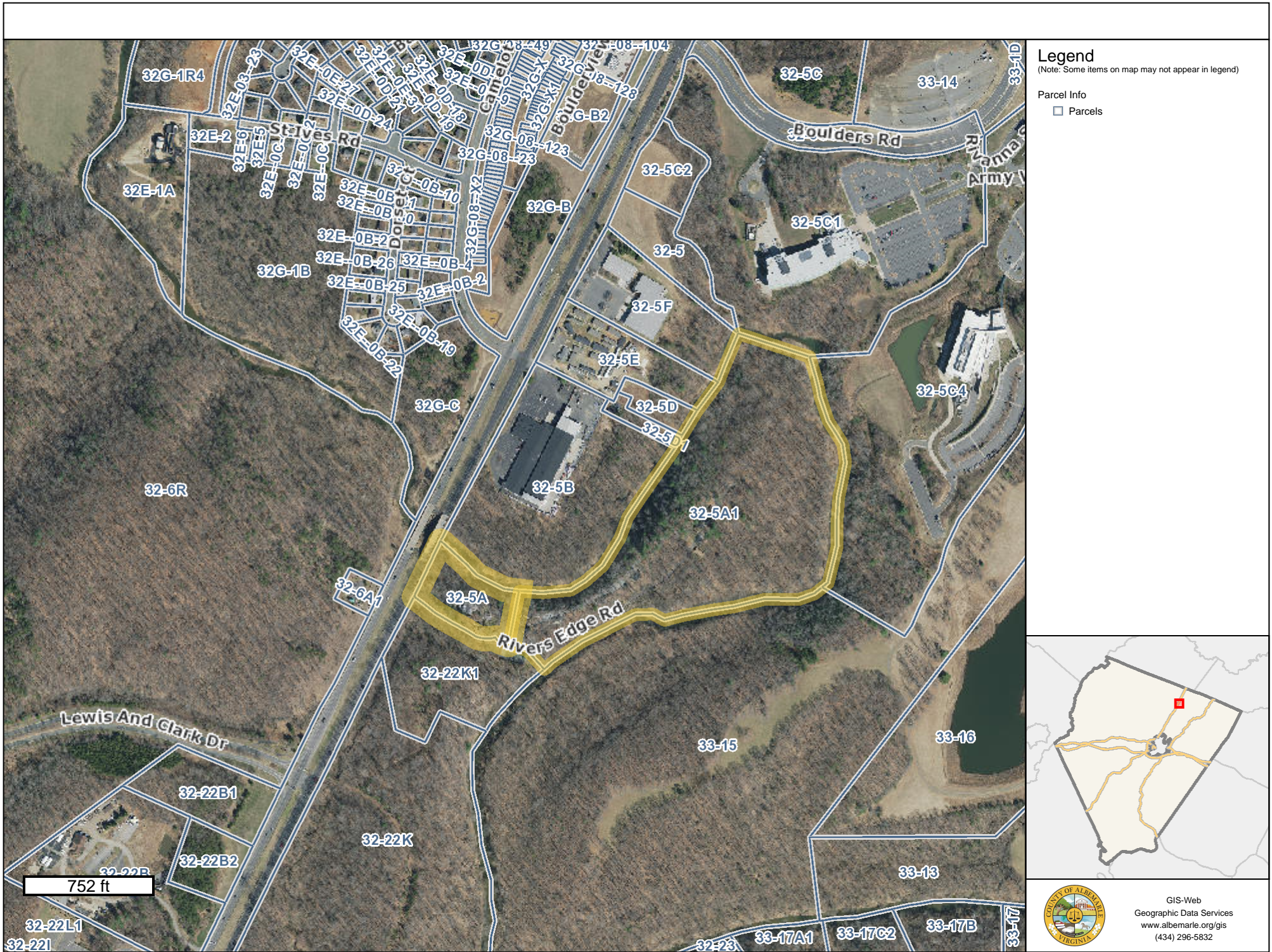


Legend
 (Note: Some items on map may not appear in legend)



GIS-Web
 Geographic Data Services
www.albemarle.org/gis
 (434) 296-5832

Any determination of topography or contours, or any depiction of physical improvements, property lines or boundaries is for general information only and shall not be used for the design, modification, or construction of improvements to real property or for flood plain determination. Map elements may scale larger than GIS data measured in the map or as provided on the data download page due to the projection used. Map Projection: WGS84 Web Mercator (Auxiliary Sphere) (EPSG 3857)



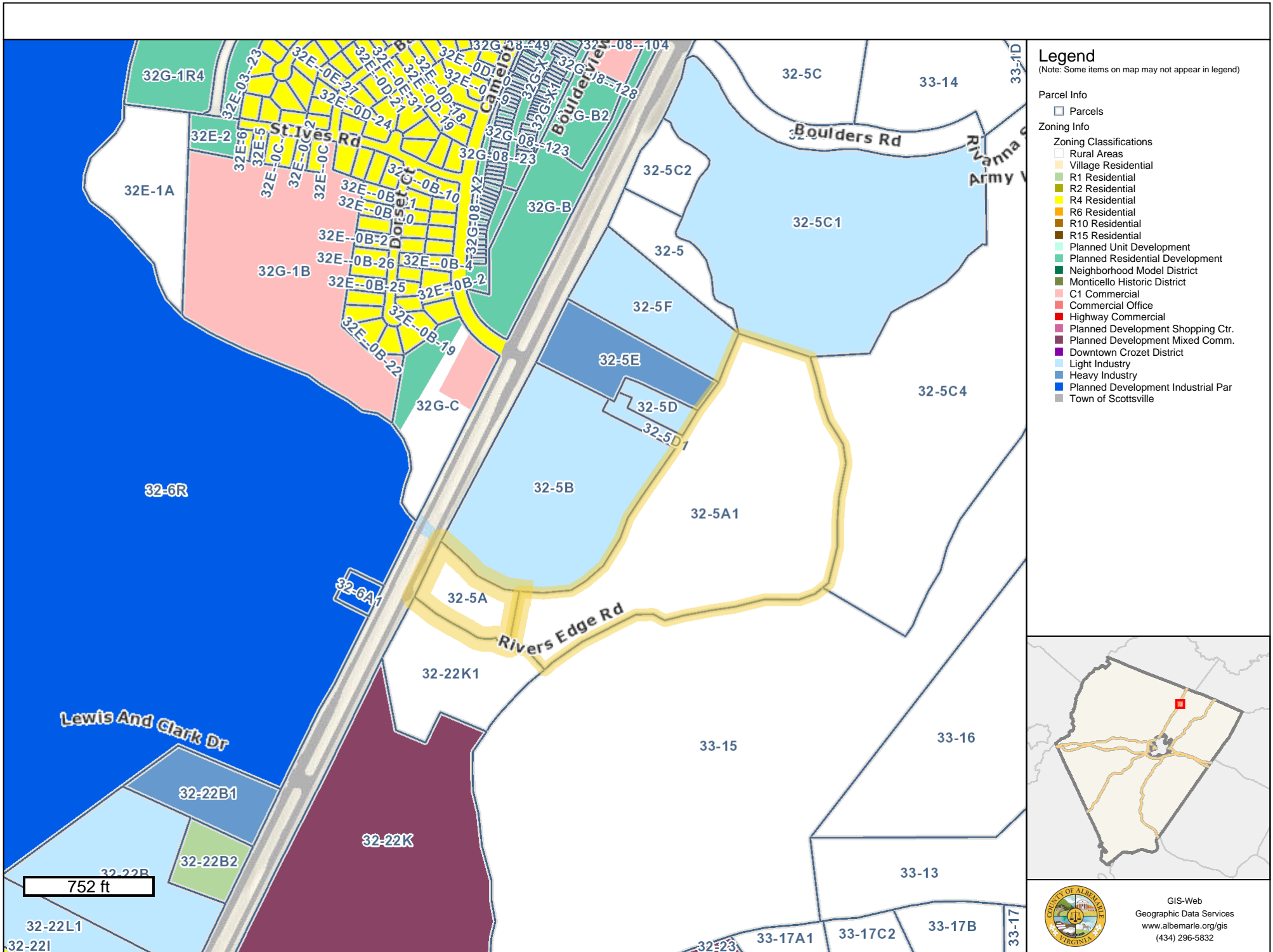
Legend
 (Note: Some items on map may not appear in legend)

Parcel Info
 Parcels

752 ft



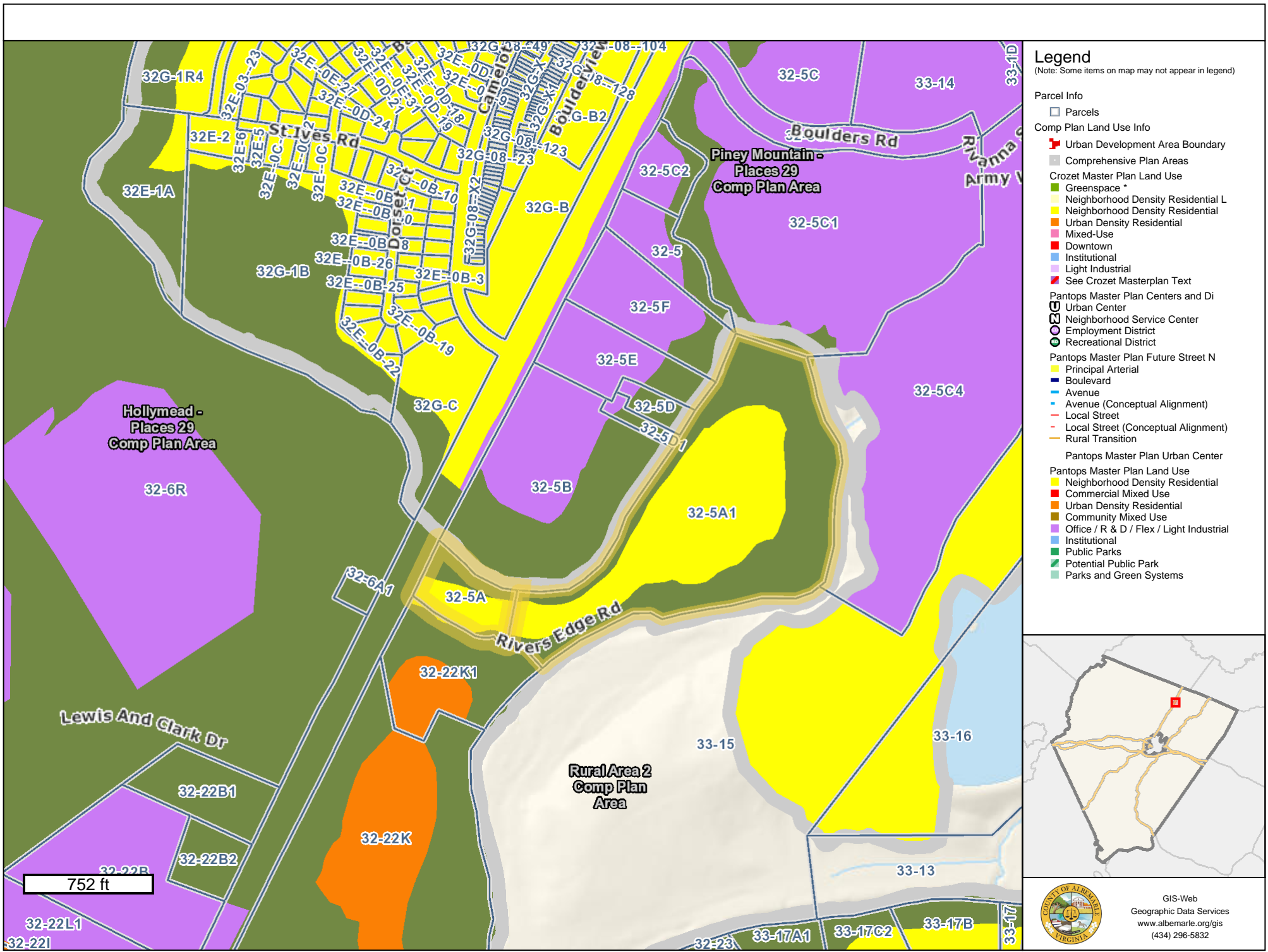
GIS-Web
 Geographic Data Services
www.albemarle.org/gis
 (434) 296-5832



Any determination of topography or contours, or any depiction of physical improvements, property lines or boundaries is for general information only and shall not be used for the design, modification, or construction of improvements to real property or for flood plain determination.
 Map elements may scale larger than GIS data measured in the map or as provided on the data download page due to the projection used. Map Projection: WGS84 Web Mercator (Auxiliary Sphere) (EPSG 3857)

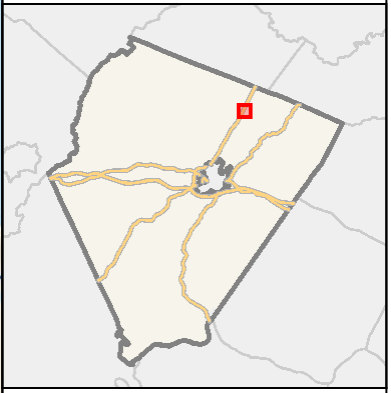


GIS-Web
 Geographic Data Services
www.albemarle.org/gis
 (434) 296-5832



Legend
(Note: Some items on map may not appear in legend)

- Parcel Info**
- ▭ Parcels
- Comp Plan Land Use Info**
- ▬ Urban Development Area Boundary
- ▭ Comprehensive Plan Areas
- Crozet Master Plan Land Use**
- ▭ Greenspace *
- ▭ Neighborhood Density Residential L
- ▭ Neighborhood Density Residential
- ▭ Urban Density Residential
- ▭ Mixed-Use
- ▭ Downtown
- ▭ Institutional
- ▭ Light Industrial
- ▭ See Crozet Masterplan Text
- Pantops Master Plan Centers and Di**
- ⊕ Urban Center
- ⊙ Neighborhood Service Center
- ⊙ Employment District
- ⊙ Recreational District
- Pantops Master Plan Future Street N**
- ▬ Principal Arterial
- ▬ Boulevard
- ▬ Avenue
- ▬ Avenue (Conceptual Alignment)
- ▬ Local Street
- ▬ Local Street (Conceptual Alignment)
- ▬ Rural Transition
- Pantops Master Plan Urban Center**
- Pantops Master Plan Land Use**
- ▭ Neighborhood Density Residential
- ▭ Commercial Mixed Use
- ▭ Urban Density Residential
- ▭ Community Mixed Use
- ▭ Office / R & D / Flex / Light Industrial
- ▭ Institutional
- ▭ Public Parks
- ▭ Potential Public Park
- ▭ Parks and Green Systems



GIS-Web
Geographic Data Services
www.albemarle.org/gis
(434) 296-5832