

CITY CHURCH MULTI-USE SPACE ADDITION



CITY CHURCH MULTI-USE SPACE ADDITION



CITY CHURCH MULTI-USE SPACE ADDITION

- 10,600 SF MULTI USE BUILDING
- 40 ADDITIONAL PARKING SPACES
- PREVIOUSLY A SPECIAL USE PERMIT WAS APPROVED FOR AN ADDITION TO THE CHURCH BUT WAS NEVER CONSTRUCTED
- NO ADDITIONAL SEATS ARE PROPOSED IN THE SANCTUARY

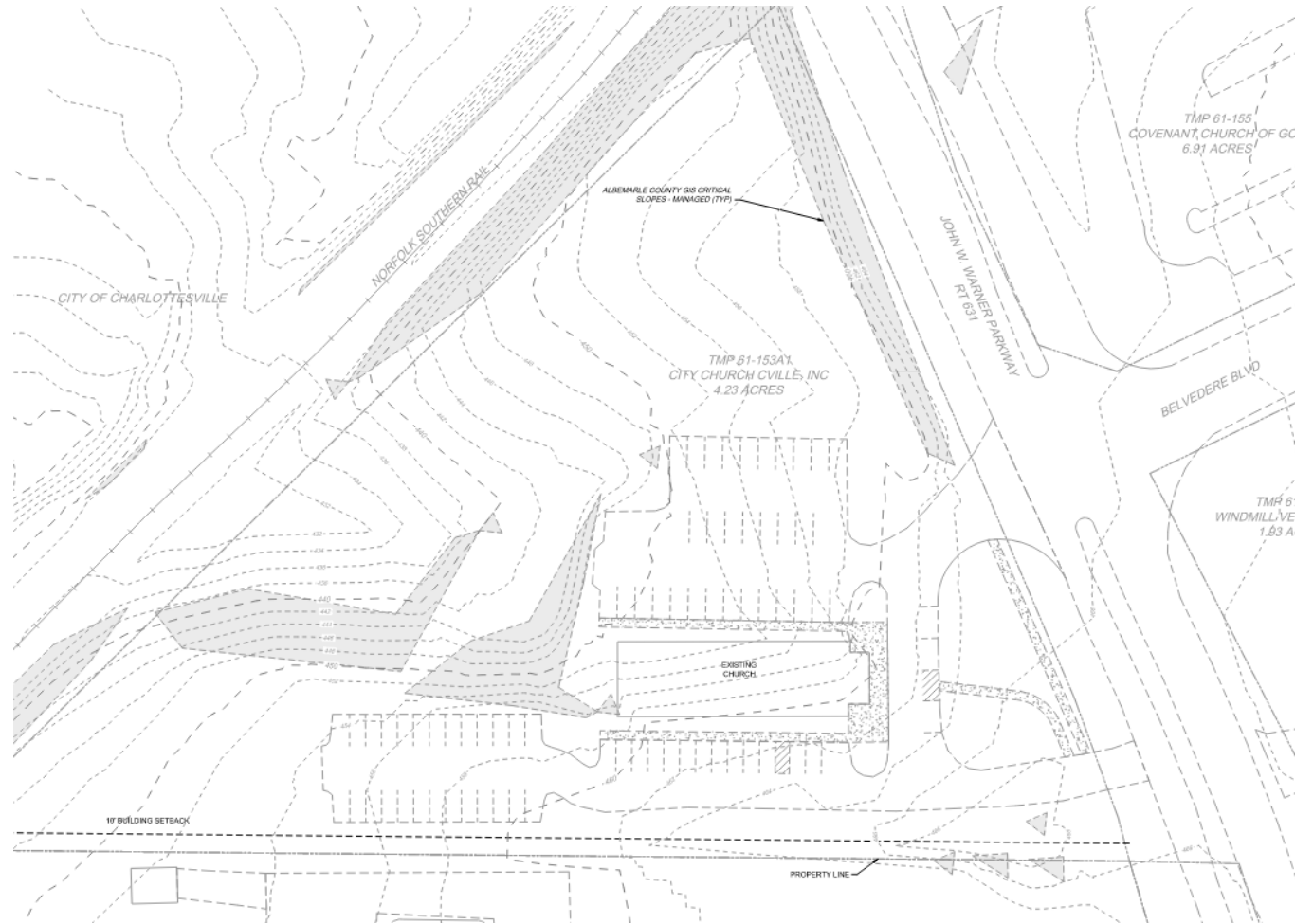


CITY CHURCH MULTI-USE SPACE ADDITION

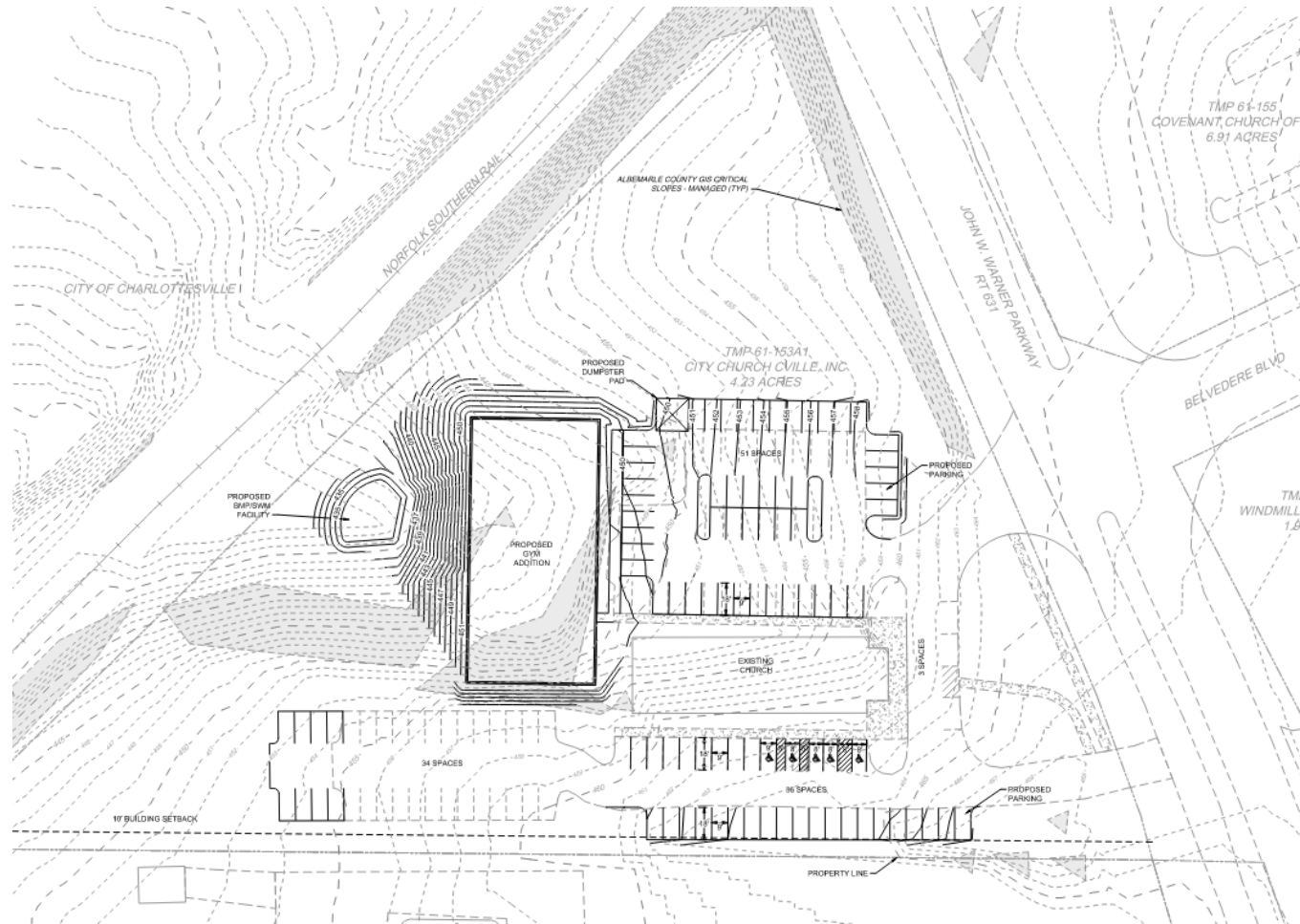
- 13,000 SF MULTI USE BUILDING
 - MEZZANINE and 2nd FLOOR
- 161 TOTAL PARKING SPACES (87 ADDITIONAL PARKING SPACES)
- NO ADDITIONAL SEATS ARE PROPOSED IN THE SANCTUARY



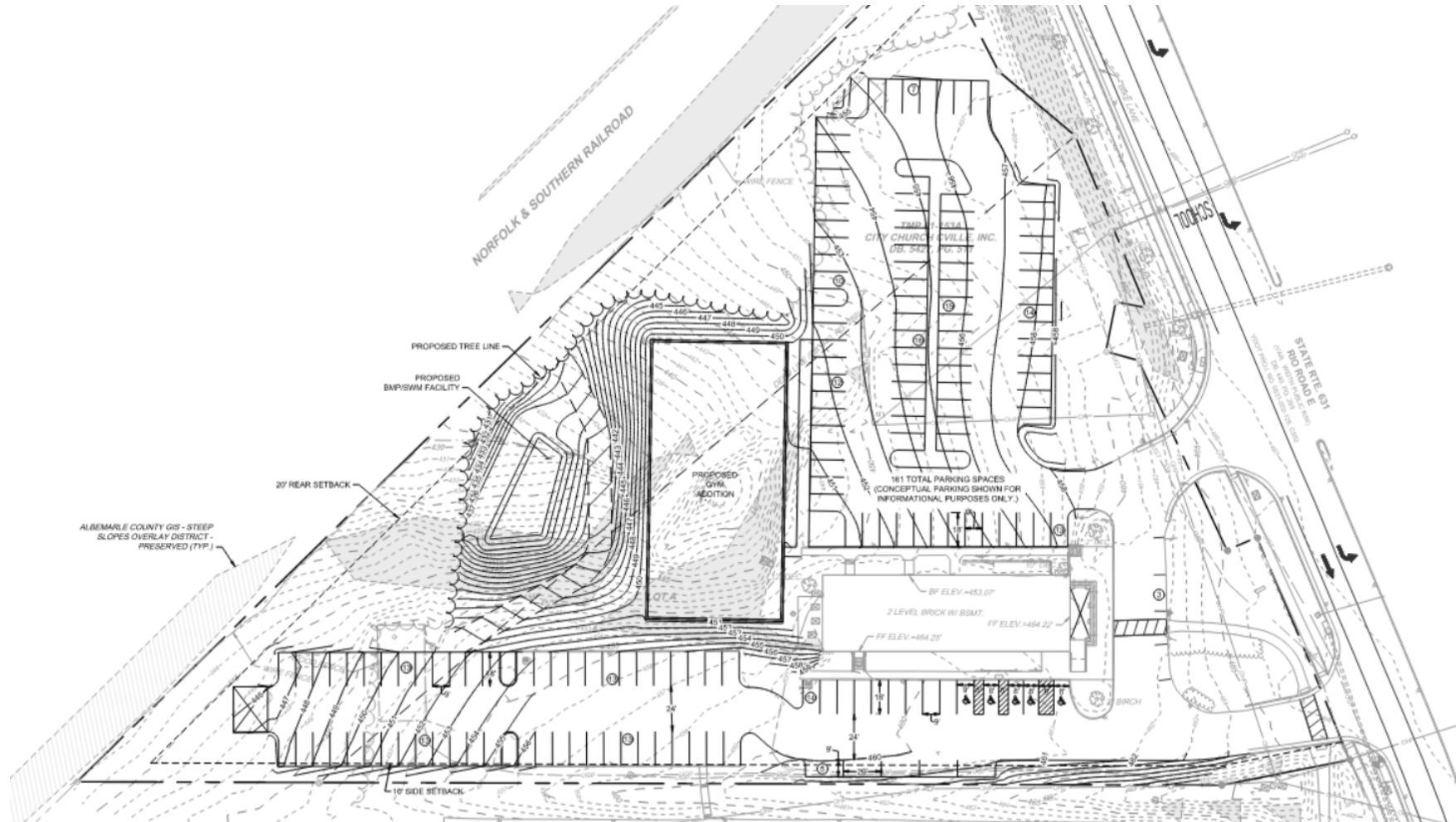
CITY CHURCH MULTI-USE SPACE ADDITION



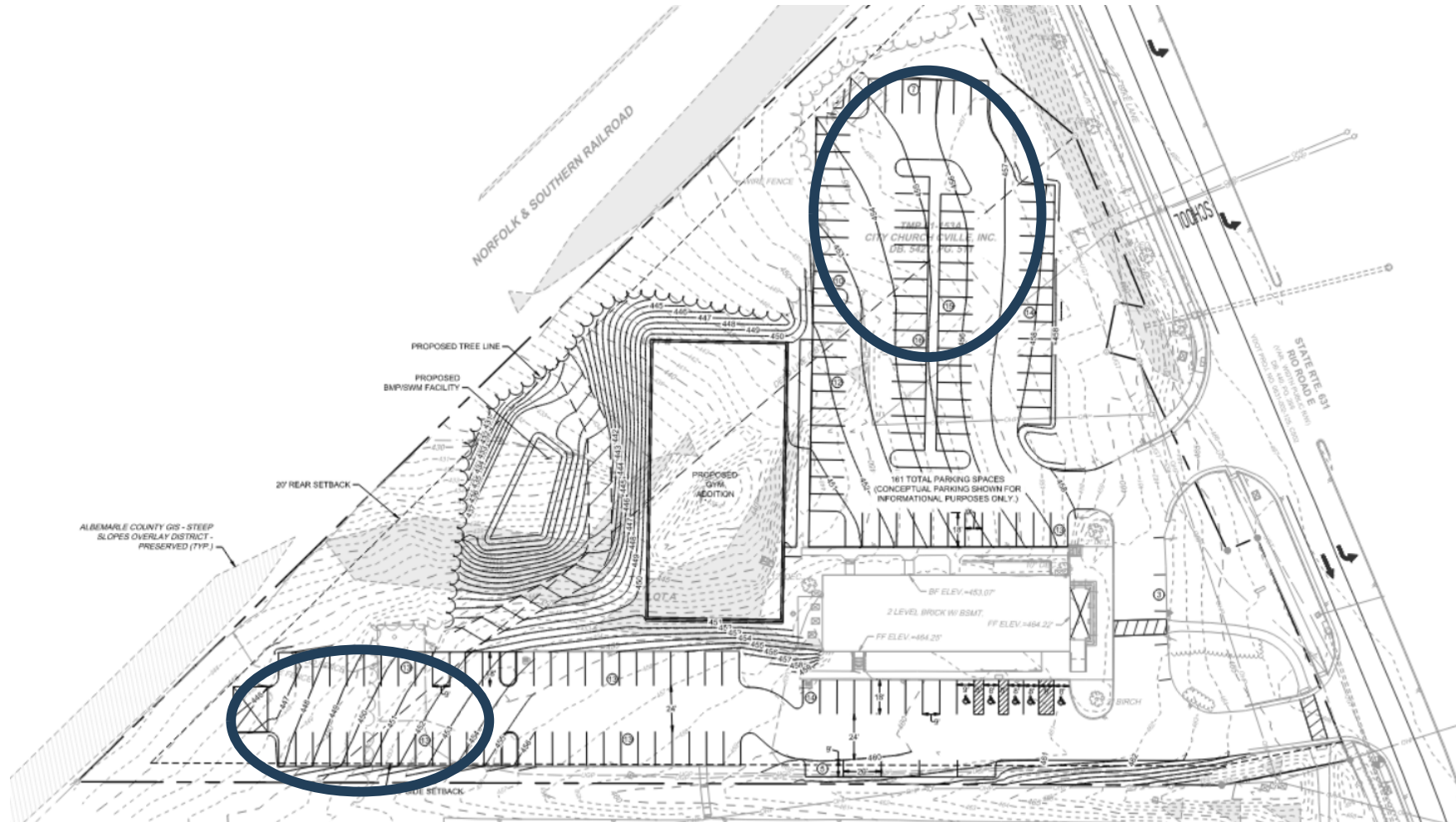
CITY CHURCH MULTI-USE SPACE ADDITION



CITY CHURCH MULTI-USE SPACE ADDITION



CITY CHURCH MULTI-USE SPACE ADDITION



CITY CHURCH MULTI-USE SPACE ADDITION

INTERIOR PARKING LOT LANDSCAPE AREA REQUIREMENTS				
* per Sec. 32.7.9.6 of the Albemarle County Code.				
REQUIREMENT	PARKING LOT AREA	CALCULATIONS	REQUIRED	PROVIDED
5% OF GROSS PARKING AREA	41,895SF	49,690 X .35 = 2,474.5	2,475SF	5,762SF

INTERIOR PARKING LOT TREE REQUIREMENTS					
* per Sec. 32.7.9.6 of the Albemarle County Code.					
PARKING LOT	REQUIREMENT	PARKING SPACES	CALCULATIONS	REQUIRED	PROVIDED
PARKING LOT 1	1 LARGE TREE PER 10 PARKING SPACES	88 PARKING SPACES	88/10 = 8.8	8 LARGE TREES	10 LARGE TREES
PARKING LOT 2	1 LARGE TREE PER 10 PARKING SPACES	71 PARKING SPACES	71/10 = 7.1	8 LARGE TREES	8 LARGE TREES

LANDSCAPING ALONG THE FRONTAGE OF E.C. STREETS					
* per Albemarle County ARB DESIGN GUIDELINES					
STREET	LENGTH	REQUIREMENTS	CALCULATIONS	REQUIRED	PROVIDED
RD ROAD EAST	383 LF	1 LARGE TREE PER 35 LF WITH INTERSPERSED FLOWERING TREES	383/35 = 11.2	12 LARGE TREES WITH INTERSPERSED FLOWERING TREES	12 LARGE TREES 15 SMALL TREES

NOTES:

- LARGE SHADE TREES ALONG ENTRANCE CORRIDOR NEED TO BE 3" CALIPER IN SIZE.
- THE ROAD FRONTAGE LENGTH TOTALS 482 LF. HOWEVER, 99 LF WAS SUBTRACTED DUE TO ENTRY DRIVES AND EXISTING TREE CANOPY.

TREE COVER CALCULATIONS				
* per Sec. 32.7.9.8 of the Albemarle County Code				
SITE AREA	REQUIREMENT	CALCULATION	REQUIRED QUANTITY	PROVIDED QUANTITY
189,970 SF (GROSS SITE AREA)	16% COVER	189,970 X .16 = 30,395	15,097SF	21,222 SF = 26,507 (EXISTING) + 5,405SF (PROPOSED) = 35,912 SF

NOTES:

- WHERE A PARKING AREA IS LOCATED SO THAT PARKED CARS ARE VISIBLE FROM AN OFF-SITE STREET, SHRUBS ARE TO BE INSTALLED AT A MINIMUM HEIGHT OF 12".
- ALL SITE PLANTINGS OF TREES AND SHRUBS SHALL BE ALLOWED TO REACH AND BE MAINTAINED AT MATURE HEIGHT; THE TOPPING OF TREES IS PROHIBITED. SHRUBS AND TREES SHALL BE PRUNED MINIMALLY AND ONLY TO SUPPORT THE OVERALL HEALTH OF THE PLANT.
- CONCEPTUAL TREES ARE ESTIMATED AS FOLLOWS: 205SF FOR LARGE SHADE TREES, 105SF FOR SMALL ORNAMENTAL FLOWERING TREES.

