

ZTA 2023-02 Personal Wireless Service Facilities

Bill Fritz, Development Process Manager, Albemarle County

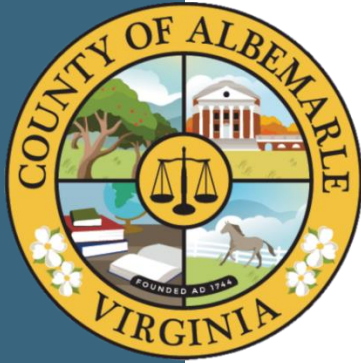
Kevin McCollum, Senior Planner II, Albemarle County

Darren Coffey, Principal, Berkley Group

Chris Musso, Planner II, Berkley Group

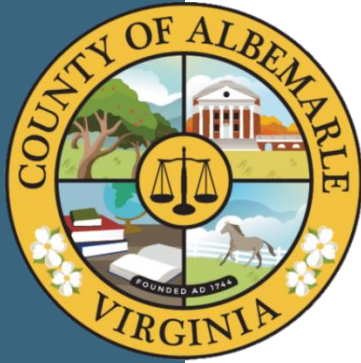
Susan Rabold, VP Project Manager, CityScape

September 4, 2024



Recommended ordinance

Avoidance area. "Avoidance area" means an area having significant resources where the initial siting of personal wireless service facilities could result in adverse impacts as follows: (i) any area within 1,500 feet of a parcel listed on the National Register of Historic Places except for those parcels listed as being within only a historic district; or (ii) any area within the Mountain Protection Areas identified in the Comprehensive Plan.



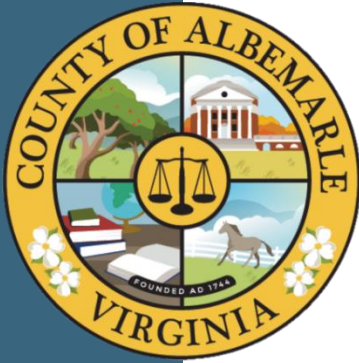
HISTORIC RESOURCES ALTERNATIVE:

In the definition of “Avoidance area” in *County Code* § 18-3.1, substitute:

“(i) any area within 1,500 feet of a parcel containing a National Historic Landmark;”

or

“(i) any area within 1,500 feet of a parcel listed on the National Register of Historic Places except for those parcels listed as being within only a historic district;”



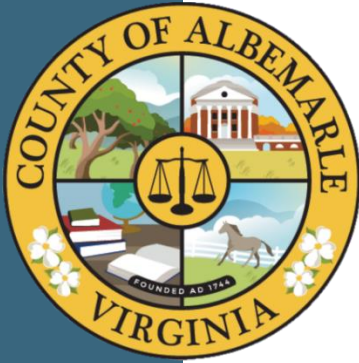
FOREST ALTERNATIVE A:

In the definition of “Avoidance area” in *County Code* § 18-3.1, substitute:

“(ii) any area within a large forest block as shown on “Map 1: Forest Blocks and Tree Cover in Albemarle County” in the Biodiversity Action Plan.”

or

“(ii) any area within the Mountain Protection Areas identified in the Comprehensive Plan.”



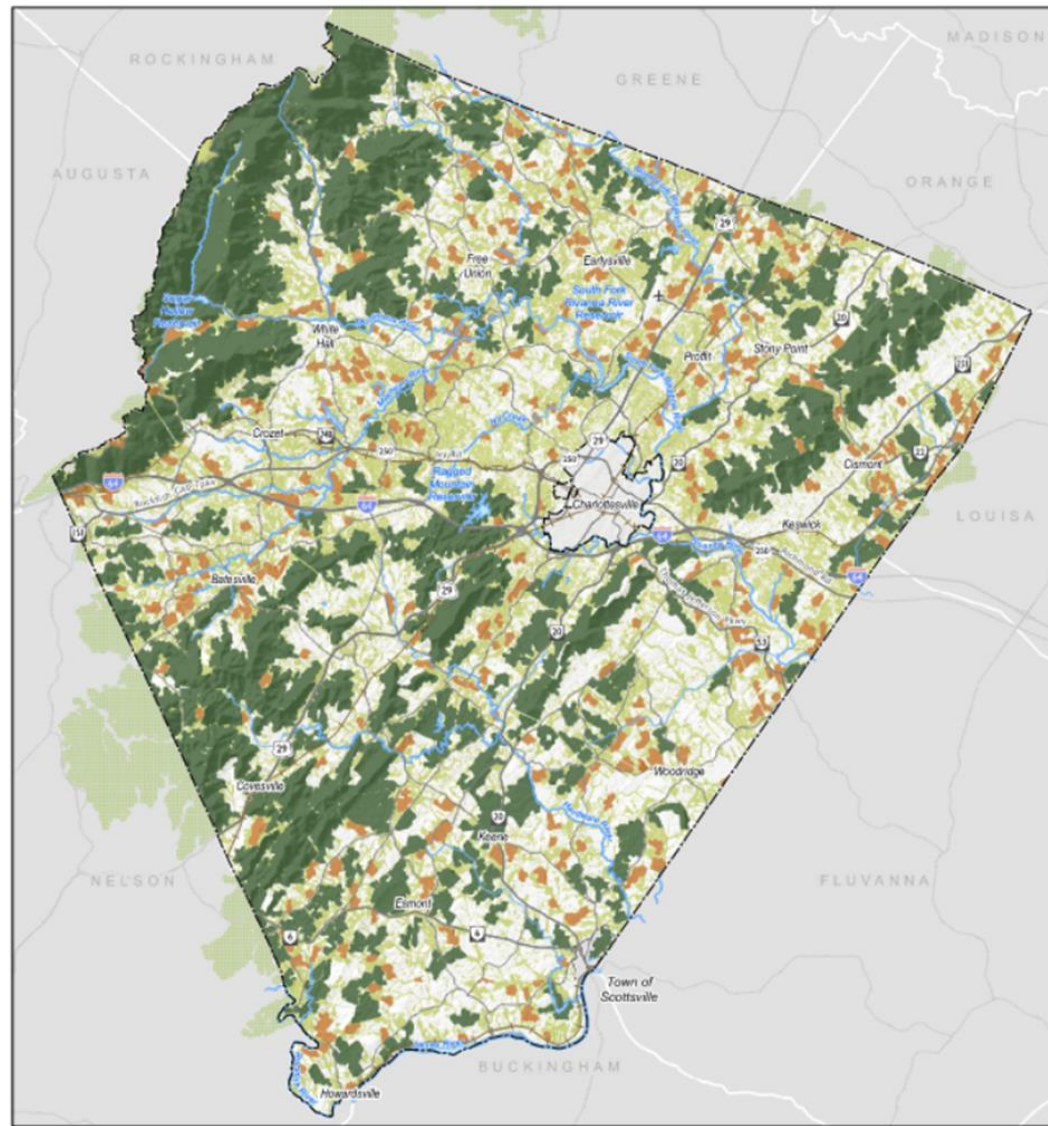
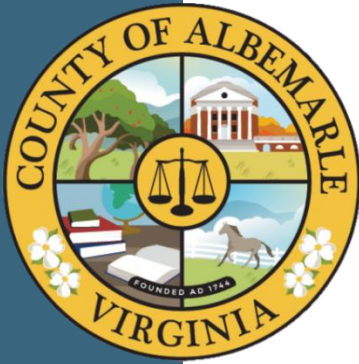
FOREST ALTERNATIVE B:

In the definition of “Avoidance area” in *County Code* § 18-3.1, substitute:

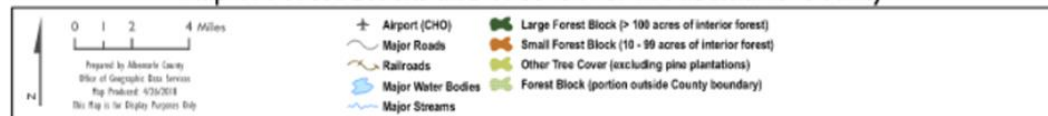
“(ii) any area within a large forest block with a score of [SPECIFY SCORE] or greater as shown on “Map 2: Ranking the Conservation Value of Large Forest Blocks” in the Biodiversity Action Plan.”

or

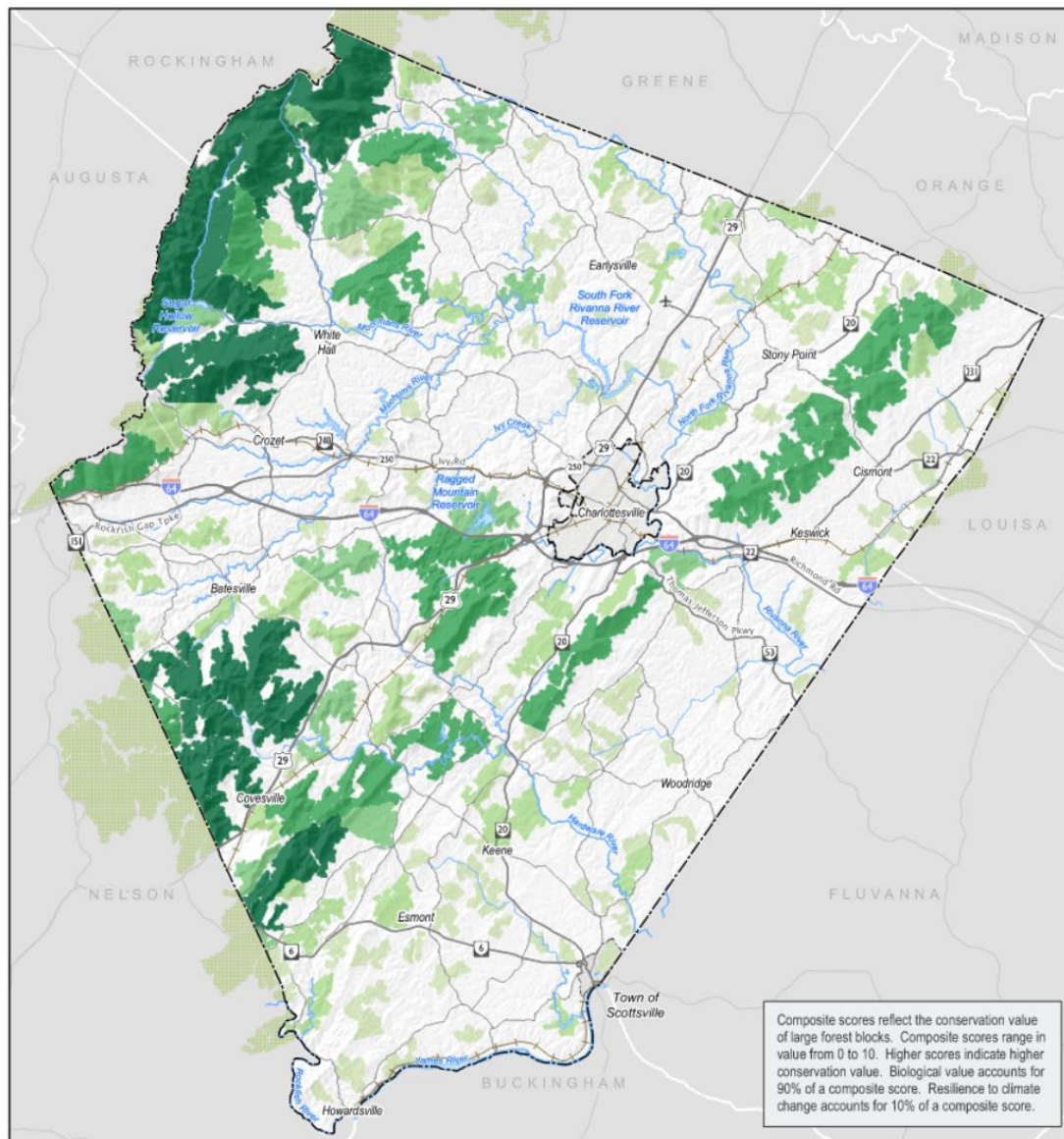
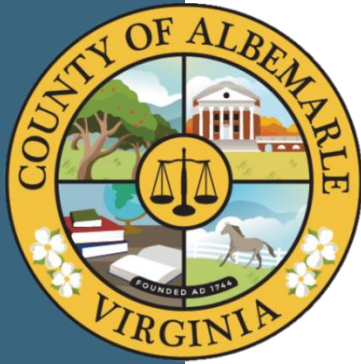
“(i) any area within the Mountain Protection Areas identified in the Comprehensive Plan.”



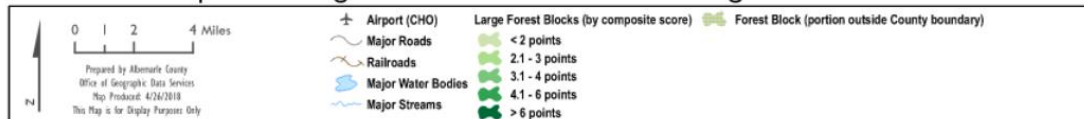
Map I: Forest Blocks and Tree Cover in Albemarle County



Map 1 illustrates forested areas and tree cover in Albemarle County based on 2009 land cover data. Pine plantations were not included as forest or tree cover in this analysis.



Map 2: Ranking the Conservation Value of Large Forest Blocks



Map 2 illustrates the composite scores of large forest blocks (blocks containing 100 or more acres of interior forest). Forest blocks were identified using 2009 land cover data.

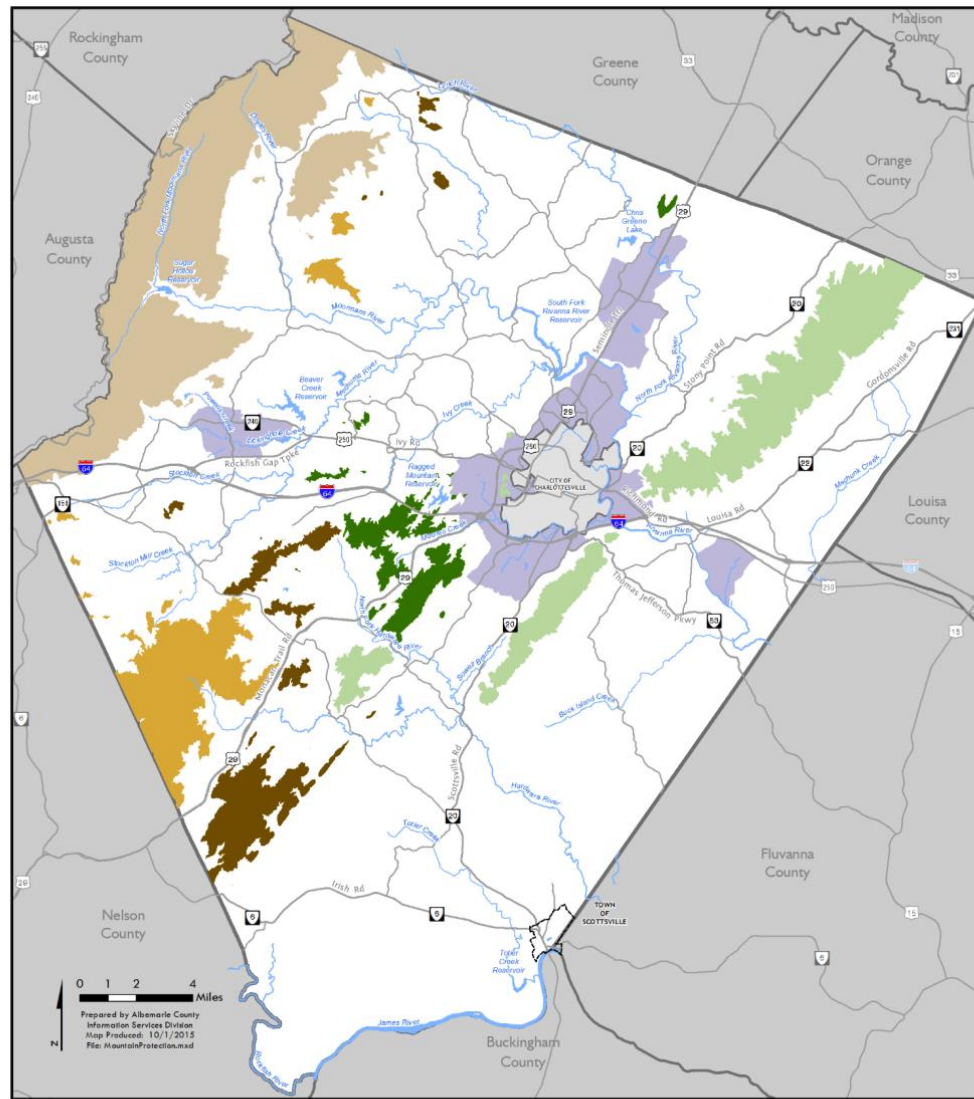
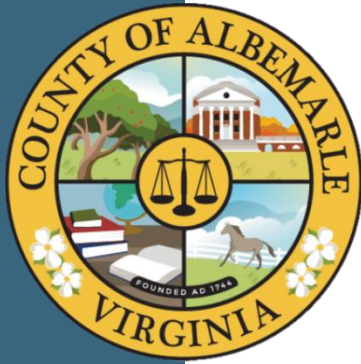
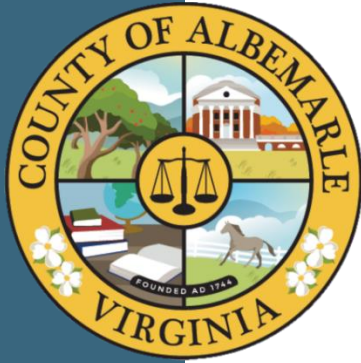


Figure 9: Mountain Protection Areas





Recommendation Options

I move that the Board adopt the ordinance attached to the staff report as Attachment B.

or

I move that the Board adopt the ordinance attached to the staff report as Attachment B, as amended by [specify alternative(s)] on Attachment C.