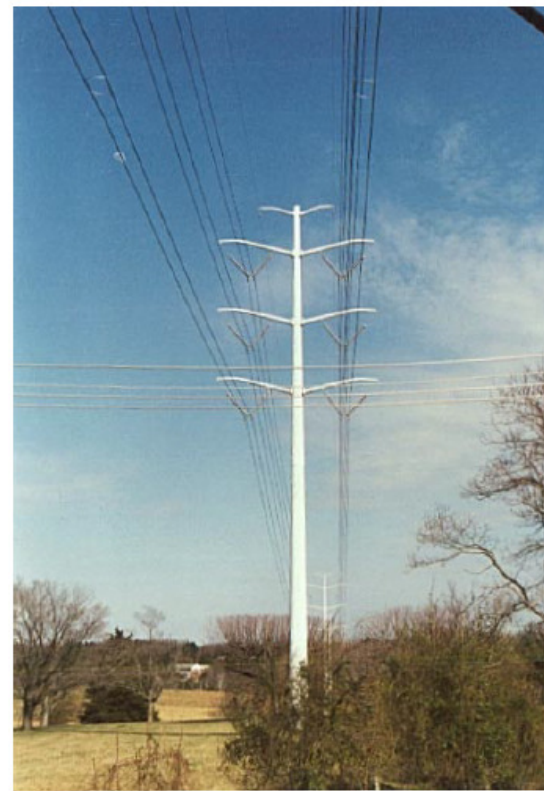


Electric transmission towers are another type of Opportunity Site.



Pictured is an antenna array on top of a transmission tower along Barracks Road. While this represents use of an opportunity site, the resulting design has visibility impacts that could have been reduced or eliminated by using alternative types of equipment and mounting techniques. Attachment to existing structures should complement - not overwhelm - the structure.



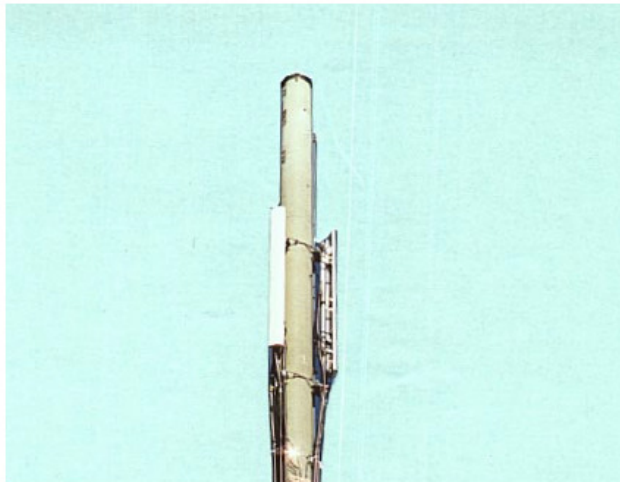
There are many more opportunities on transmission towers in Albemarle County such as this example along Barracks Road.

Antenna arrays are how the antennas are combined on a mount.



This antenna array on Barracks Road is sometimes called a “reindeer hat” or “top hat” array. These types of antennas can be found on transmission towers, lattice towers and monopoles.

These antenna arrays are provided for “spatial diversity”, but they are highly visible and are discouraged. These antenna arrays do not comply with the design guidelines contained on page 50.



This is a dual-polarized or cross-polarized antenna on 5th Street. It can provide for polarization diversity and can do everything that the “top hat” array can do. Dual polarization eliminates the need for “spatial diversity”.

Dual-polarized antennas cannot be placed as high and, therefore, more sites will be required. However, they do comply with the design guidelines contained on page 50.